



# Asus G501JW-BHI7N12 Device Page Wifi Card Replacement

This guide will show you how to remove and...

Written By: Dustin Annis



# INTRODUCTION

This guide will show you how to remove and replace the Wifi card for the Asus G501JW-BHI7N12. This could improve connections with Wifi networks and could also solve connections issues with other wireless devices.

---

## TOOLS:

[Phillips #0 Screwdriver](#) (1)

[Anti-Static Wrist Strap](#) (1)

---

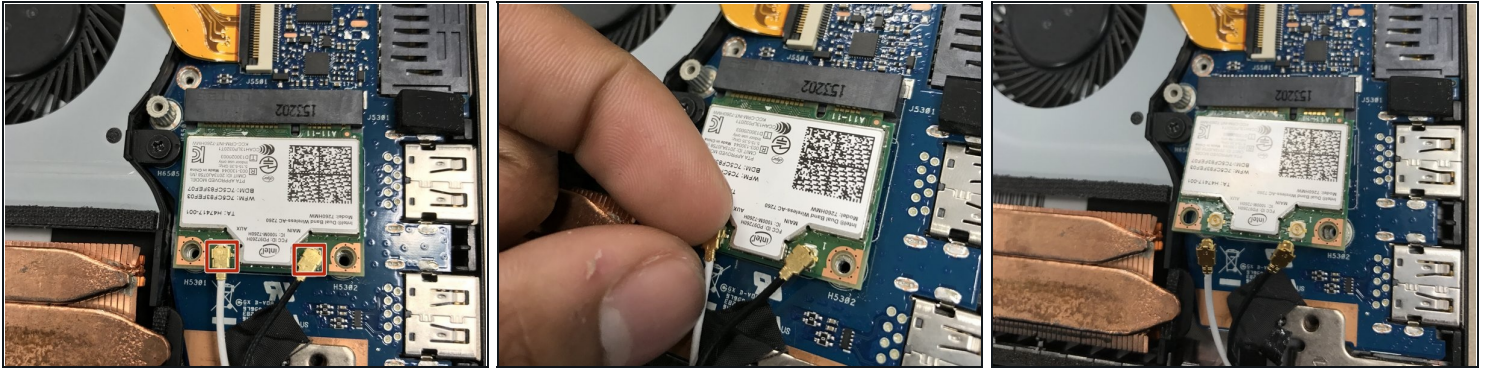
## Step 1 — Wifi Card



- Attach the [Anti-Static Wrist Strap](#) to a metal piece of the computer.
- Unscrew the two 4 mm Philips 0 screws from the wifi card.

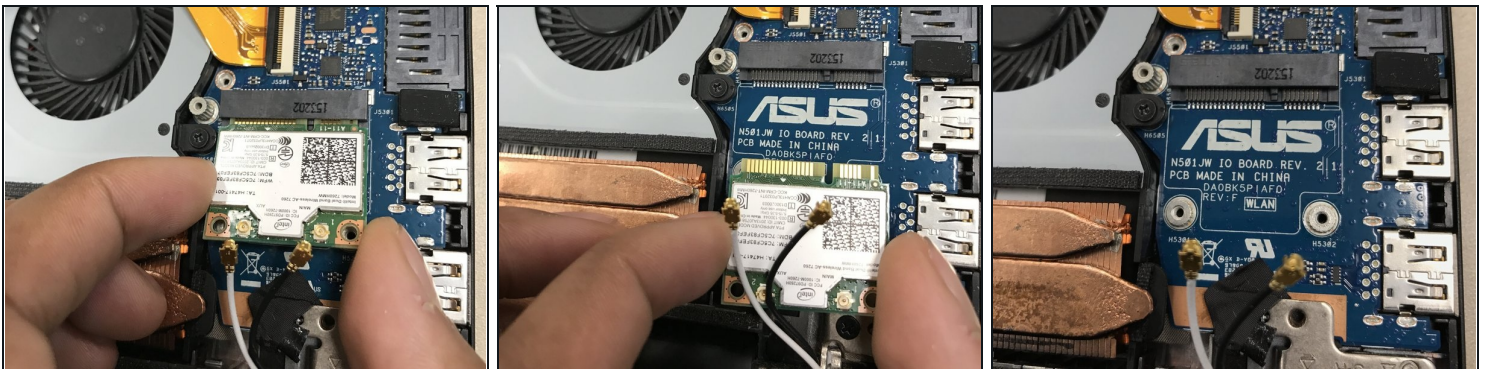


## Step 2



- Remove the two black and white connectors from the Wifi card by gently pulling them up and away from the card.

## Step 3



- Pull the Wifi card away from the socket and remove it.

To reassemble your device, follow these instructions in reverse order.