



# MacBook Unibody Model A1278 Optical Drive Replacement

Written By: Walter Galan



## INTRODUCTION

This guide will show you how to replace the SuperDrive from your laptop (requires a SATA SuperDrive).



### TOOLS:

- [Phillips #00 Screwdriver](#) (1)
- [Spudger](#) (1)



### PARTS:

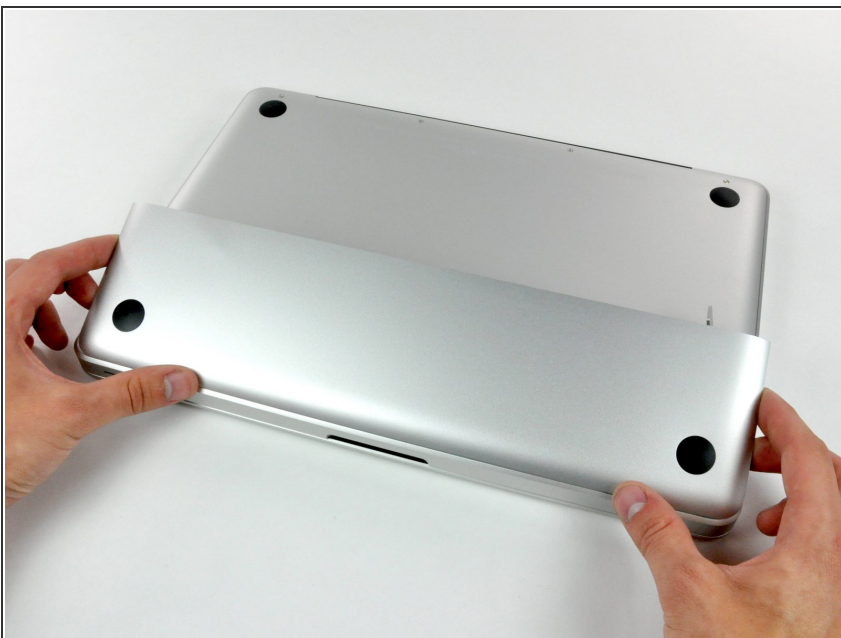
- [MacBook Unibody \(Model No. A1278\) 8x SATA SuperDrive \(Used\)](#) (1)
- [MacBook Unibody \(Model No. A1278\) SATA SuperDrive Cable](#) (1)
- [SATA USB Adapter](#) (1)
- [Unibody 8x SATA SuperDrive \(Pre-Mid 2009\)](#) (1)

## Step 1 — Access Door



- With the case closed, place the Unibody top-side down on a flat surface.
- Depress the grooved side of the access door release latch enough to grab the free end. Lift the release latch until it is vertical.

## Step 2



- The access door should now be raised enough to lift it up and out of the Unibody.

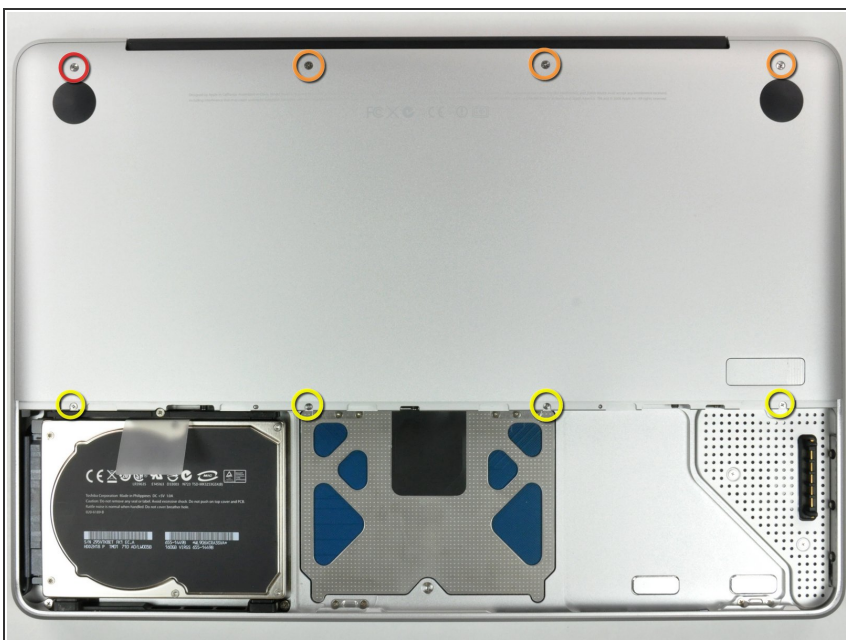


## Step 3 — Battery



- ❗ Be sure the access door release latch is vertical before proceeding.
- Grab the white plastic tab and pull the battery up and out of the Unibody.

## Step 4 — Lower Case



- Remove the following eight screws securing the lower case to the chassis:
  - One 3 mm Phillips screw.
  - Three 13.5 mm Phillips screws.
  - Four 3.5 mm Phillips screws.

## Step 5



- Using both hands, lift and remove the lower case off the upper case.

## Step 6 — Optical Drive



- Using the flat end of a spudger, pry the subwoofer connector straight up off the logic board.

⚠ On some models, the subwoofer connector is soldered to the logic board and will break if you pry it off. If you need to replace the speaker/subwoofer, you can pull back the foam padding on the connector and remove the red and black wires to disconnect. You will need to reinsert the wires from the new speaker to reconnect.

ⓘ If you are only removing the optical drive and not replacing the speaker/subwoofer, you do not need to disconnect this connector.

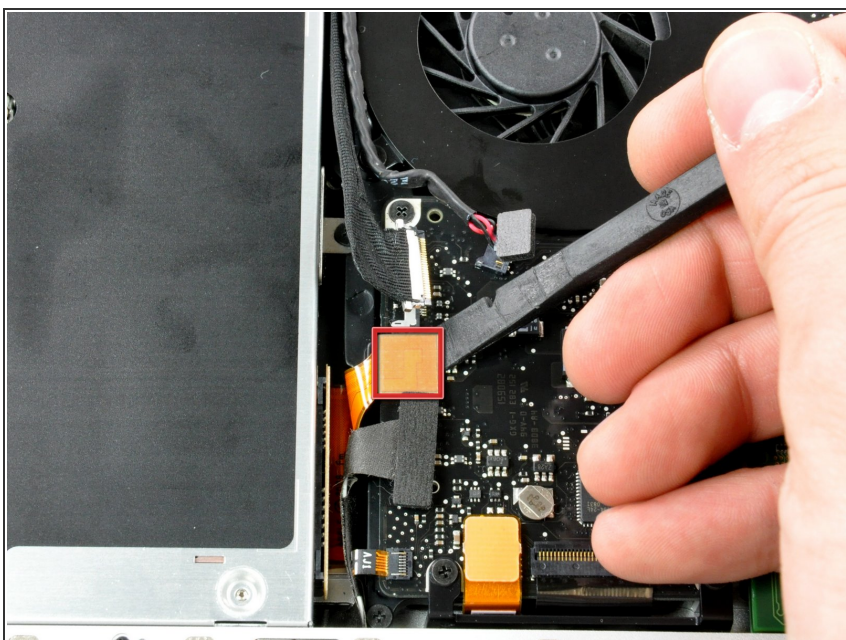


## Step 7



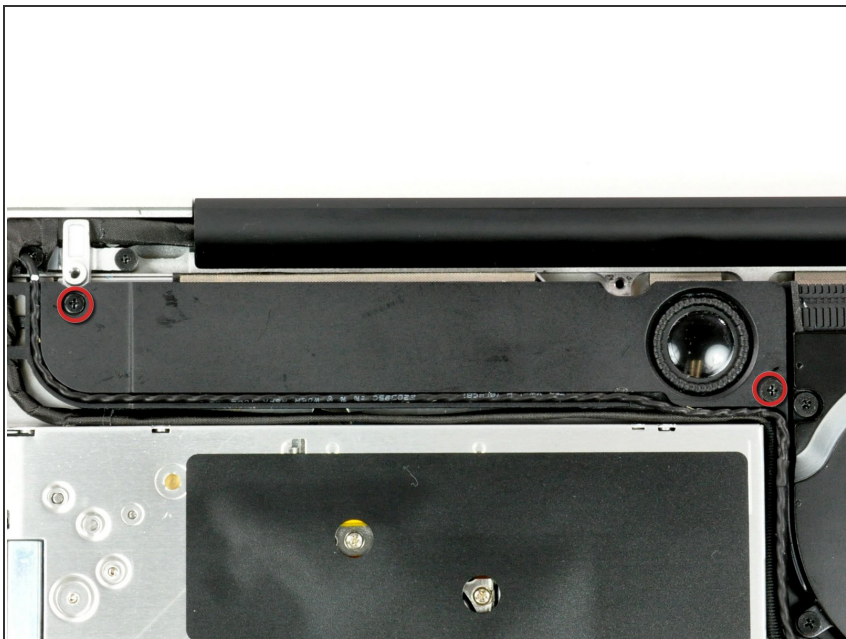
- Disconnect the camera cable by pulling the male end straight away from its socket.

## Step 8



- Use a spudger to pry the optical drive connector straight up off the logic board.

## Step 9



- Remove the two Phillips screws securing the subwoofer to the upper case.
- ⓘ The longer of the two screws is on the right.

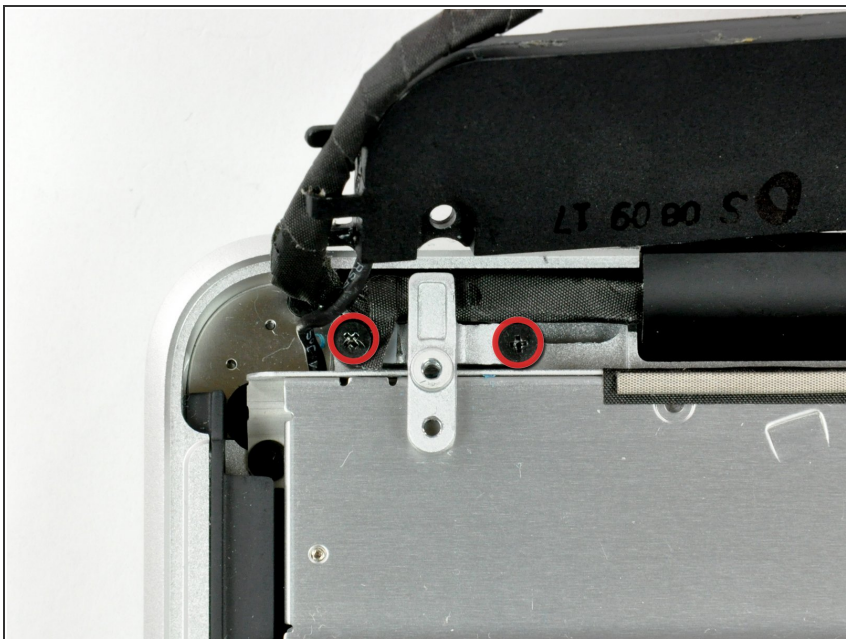
## Step 10



- ⓘ The subwoofer is still connected to the right speaker, so don't completely remove it just yet.
- Lift the subwoofer off the optical drive, and set it above the computer.

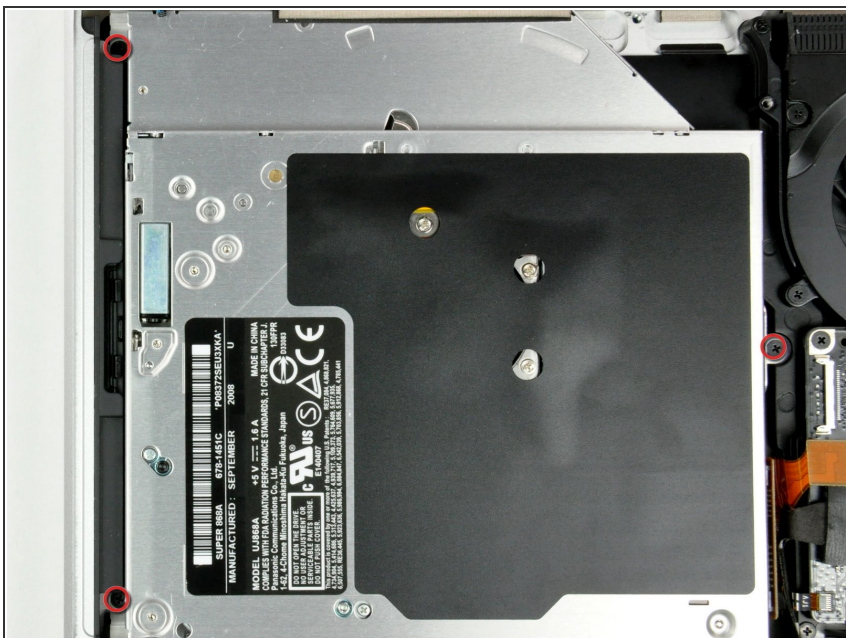


## Step 11



- Remove the two Phillips screws securing the camera cable bracket to the upper case.
- ⓘ The leftmost screw may remain captive in the camera cable.

## Step 12



- Remove the three 2.5 mm Phillips screws securing the optical drive to the upper case.

## Step 13



- Lift the optical drive from its right edge and pull it out of the computer.
- ★ The hard drive cable may become disconnected from the logic board when removing the optical drive. Ensure it is connected during reassembly.

## Step 14 — Optical Drive



- Remove the optical drive cable by pulling it straight away from the optical drive.
- i This connector is particularly deep, so be sure to pull away from the drive at the center of the connector.
- i If you have a CD or any other object jammed in your optical drive, we have an [optical drive repair guide](#).

## Step 15



- Remove the two black Phillips #0 screws securing the small metal mounting bracket. Transfer this bracket to your new optical drive or [hard drive enclosure](#).

To reassemble your device, follow these instructions in reverse order.