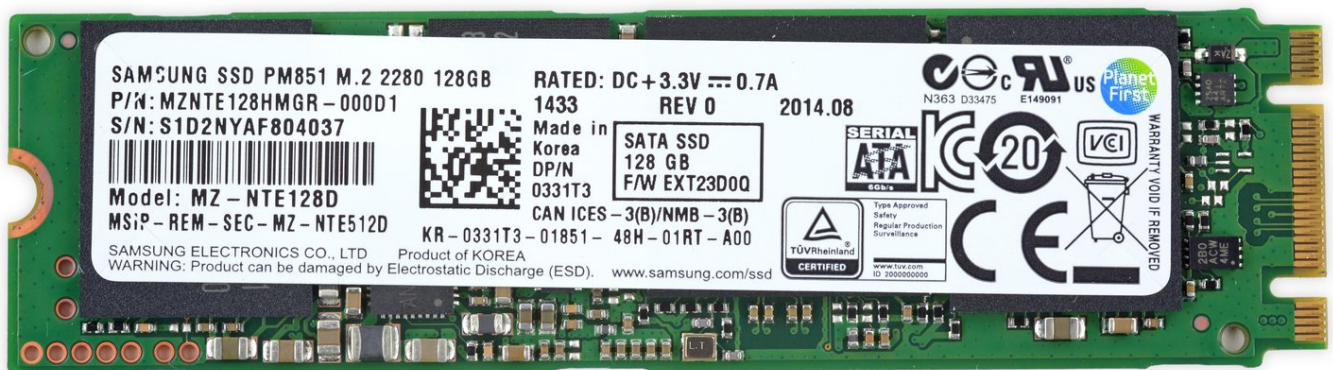




# Dell XPS 13 SSD Replacement

This guide shows how to replace the SSD in the...

Written By: The Raptor



# INTRODUCTION

This guide shows how to replace the SSD in the Dell XPS 13. If your old SSD still works, be sure to create a full backup or clone the drive before you begin. You can use this guide either to upgrade to a higher-capacity drive, or to replace a faulty drive. If you install a blank SSD, you'll need to reinstall Windows (or the OS of your choice) when you're done with the repair.

## TOOLS:

[T5 Torx Schraubendreher \(1\)](#)  
[Kreuzschlitzschraubendreher #0 \(1\)](#)  
[Opening Picks \(1\)](#)  
[Spudger \(1\)](#)

## PARTS:

[Crucial P3 NVMe PCIe M.2 2280SS SSD - solid performance, switching from HDD or SATA to NVMe™ \(1\)](#)  
[Crucial P3 Plus NVMe PCIe M.2 2280SS SSD - fast Gen4 NVMe™ storage for data-intensive applications \(1\)](#)  
[Crucial P5 Plus NVMe PCIe M.2 2280SS SSD - professionals, creatives, and hardcore gamers \(1\)](#)

## Step 1 — Back Cover



- Remove the eight 4 mm T5 Torx screws from the bottom cover.

## Step 2



- Use a plastic opening tool to pry open the 'XPS' flap in the middle.

## Step 3



- Remove the single Phillips screw hidden beneath the flap.

## Step 4



- Use opening picks or a plastic pry tool to pry open the case clips, beginning from the back edge.

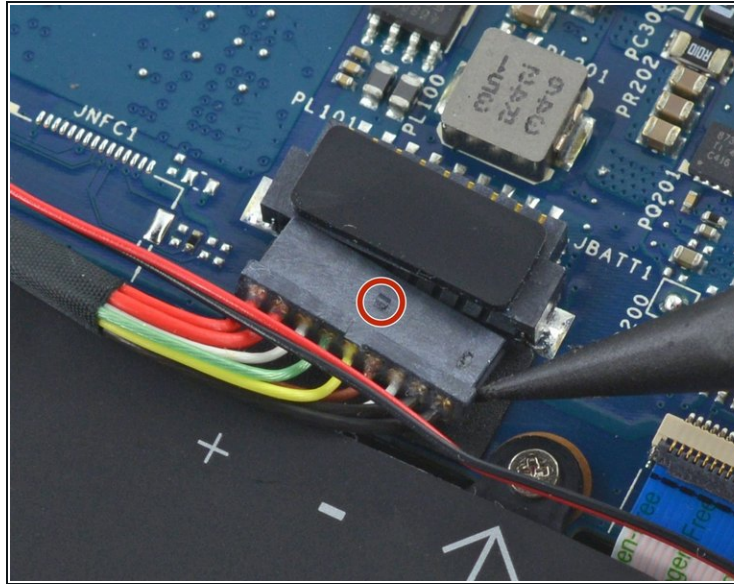
## Step 5



- Remove the bottom cover.



## Step 6 — Battery Disconnection



- Pull the battery cable connector towards the battery to disconnect it from its socket.
- If the connector is stubborn, push a little at one side, then the other, to "walk" it out of its socket.
- If you have trouble walking the connector out of the socket, use the point of a spudger to gently push on the connector indent to slide the connector out.

 **Do not pull up.**

- Open the display and press the power button for five seconds to drain any remaining charge from the system.

## Step 7 — SSD



- Remove the black, 4 mm Phillips screw securing the SSD.

## Step 8



- Slide the SSD out of its socket.
  - ⚠ Try not to lift the SSD any more than necessary.
  - ★ During reassembly, make sure the slot in the SSD lines up with the slot in its socket. Do not touch the gold-colored contacts with your fingers.

To reassemble your device, follow these instructions in reverse order.