



Samsung NP-NC10-KA02US WLAN Card Replacement

This guide will show you how to remove the WLAN card for replacement.

Written By: Abigail Nicholas





TOOLS:

- [iFixit Opening Tools](#) (1)
 - [Phillips #1 Screwdriver](#) (1)
-

Step 1 — Battery



- Locate the external battery on the bottom side of the device.
- Locate the tab on the right side of the battery.
- Shift the tab to the left.

Step 2



- Locate the tab on the left side of the device's battery.
- Push the left tab to the right.

Step 3



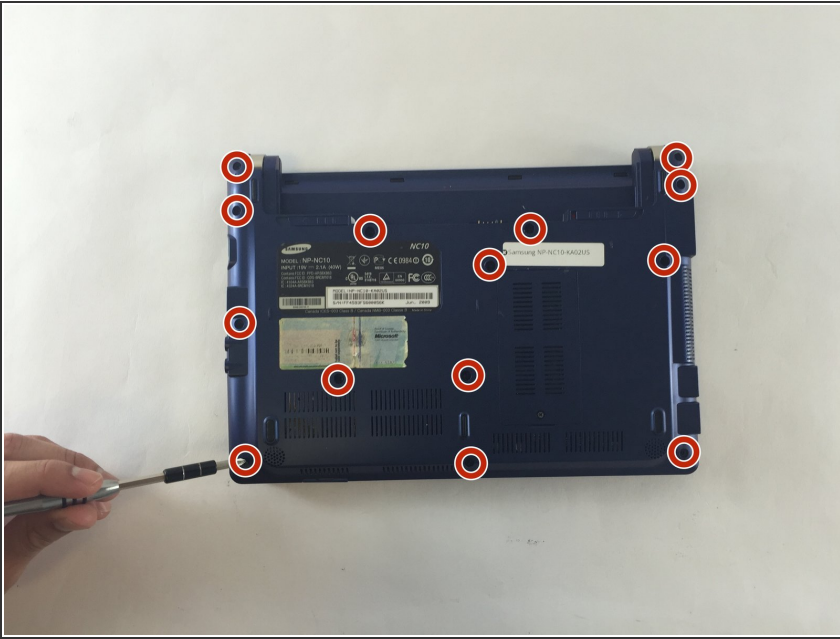
- Pull the battery up from the device.

Step 4 — Back Plate



- Locate the 14, 3.93 mm, screws that need to be removed on the base of the computer.

Step 5



- Remove all 14 of the 3.93 mm screws using a PH1 screw bit.

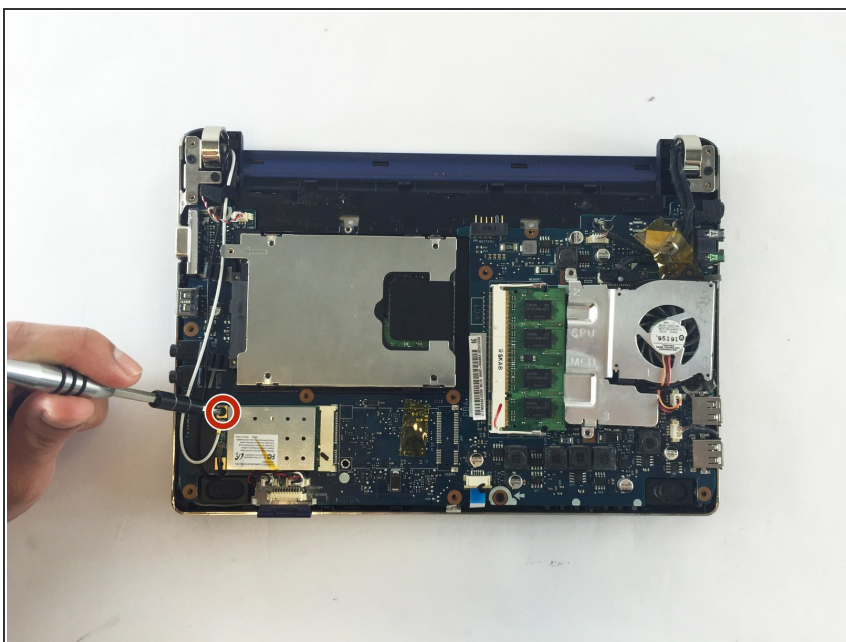
Step 6



- Using two plastic opening tools remove the back plate.
- ⓘ These plastic opening tools have a flat-head that extends as a wedge which are utilized to separate pressure fit plastic components without causing any damage to them.
- The back plate is now removed exposing all of the hardware components.

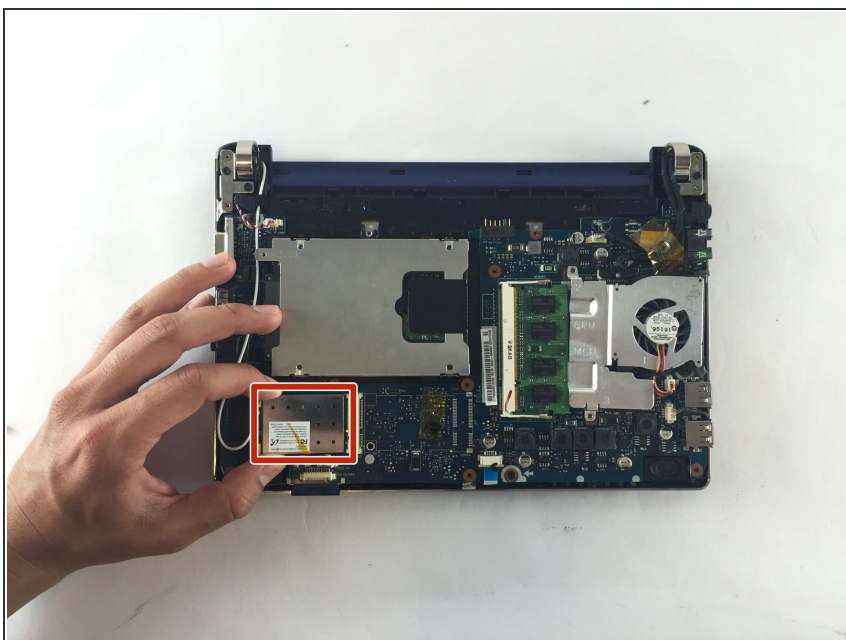
This document was generated on 2020-11-15 01:42:38 AM (MST).

Step 7 — WLAN Card



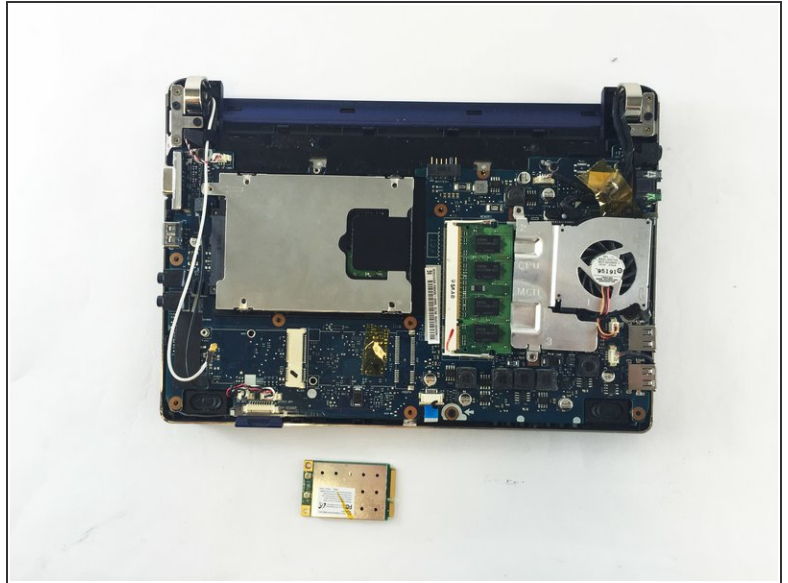
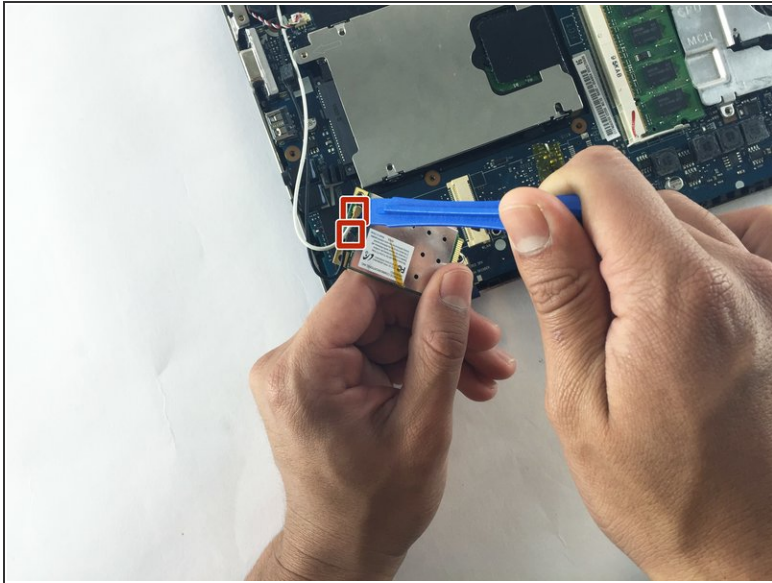
- Using a 3.93mm Phillips screwdriver remove the screw attaching the WLAN card.

Step 8



- Gently lift the WLAN card.

Step 9



- Gently using a plastic opening tool, remove the two latches attached to the WLAN card in the netbook.
- Your WLAN card is now removed.

To reassemble your device, follow these instructions in reverse order.