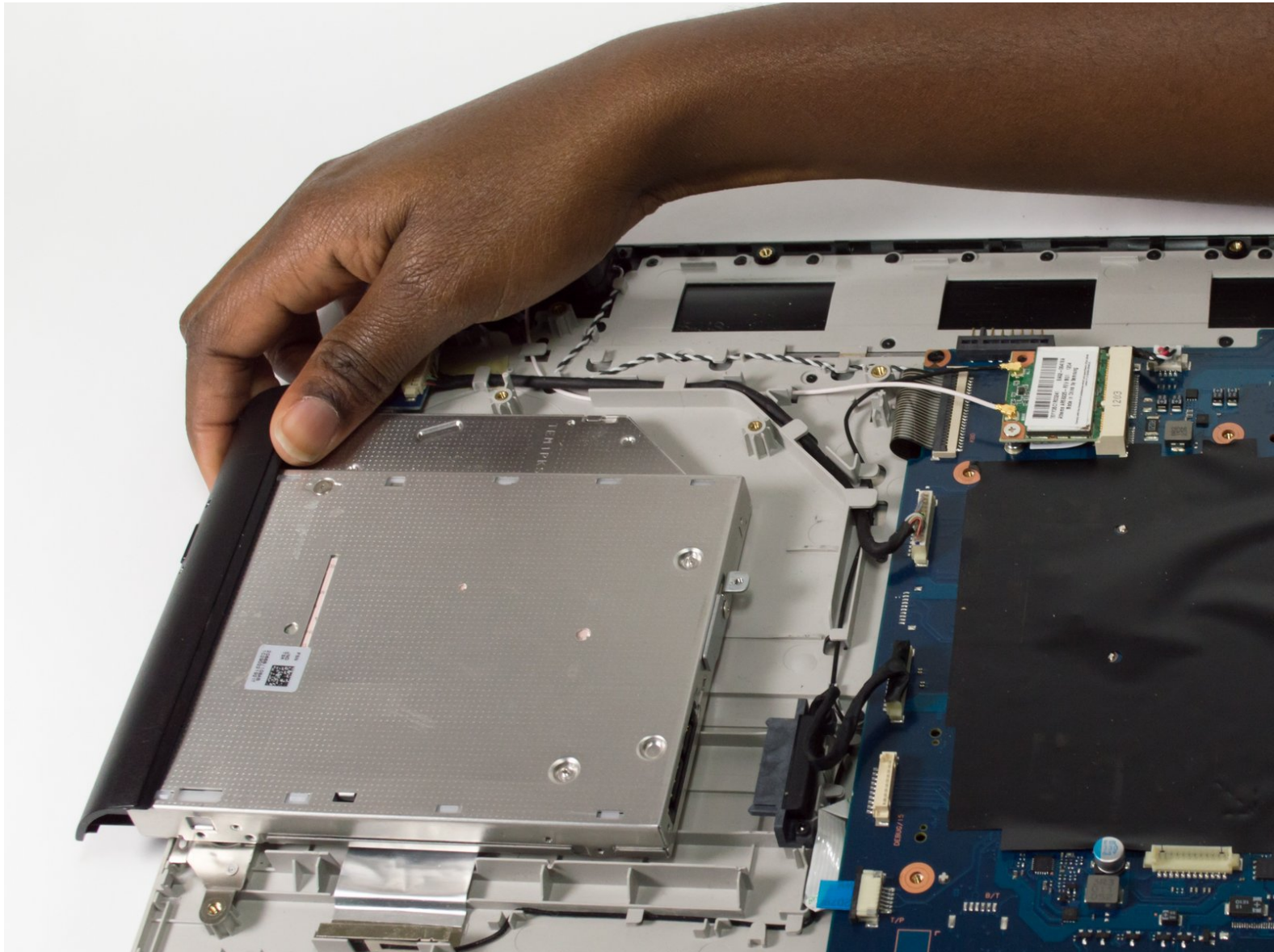




Samsung NP305E5A-A03US Optical Drive Replacement

This guide will help you through the process of replacing the optical drive (CD/DVD Drive).

Written By: Kris Stobbe



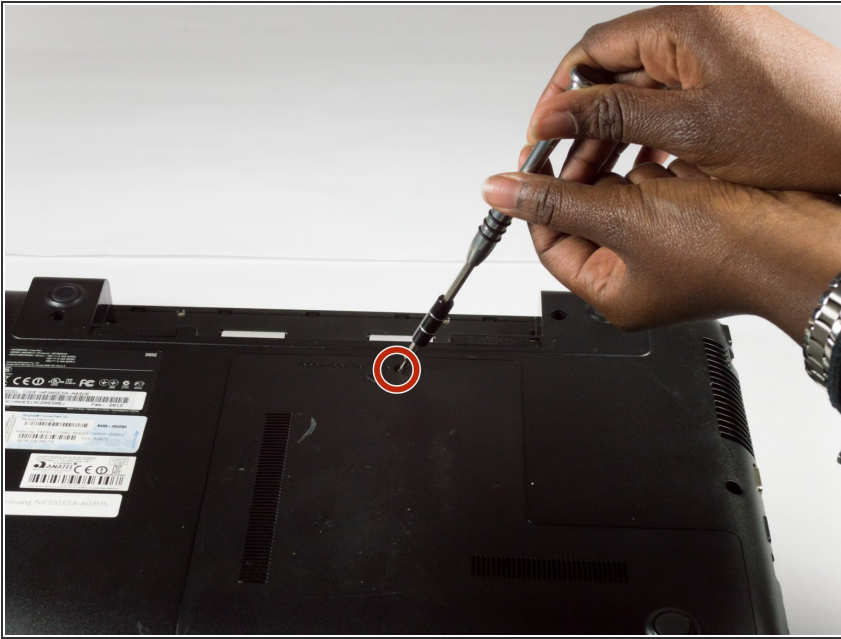
INTRODUCTION

This guide will help you replace your malfunctioning optical drive. You may want to use this guide if your CD/DVD drive is [unresponsive](#).

TOOLS:

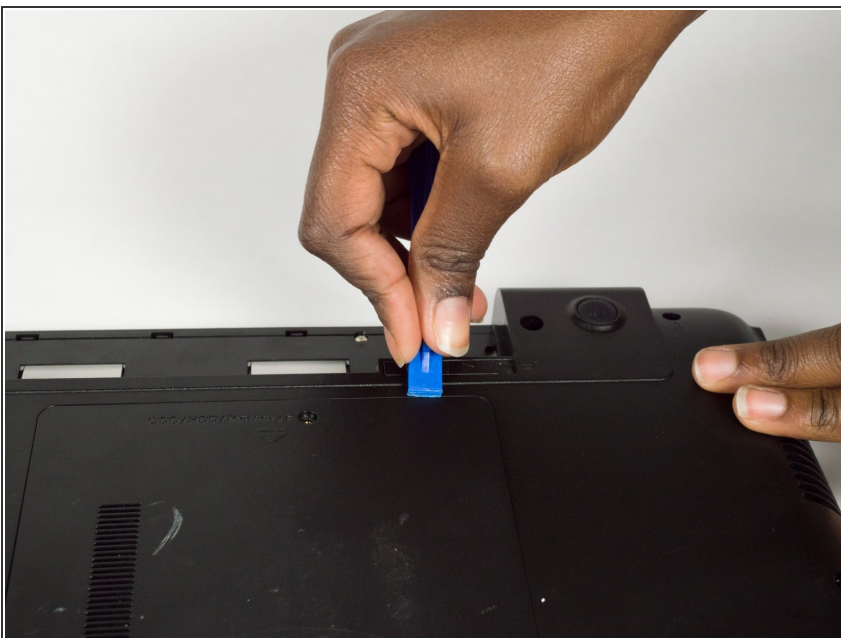
- [iFixit Opening Tools](#) (1)
 - [Phillips #0 Screwdriver](#) (1)
-

Step 1 — Hard Drive



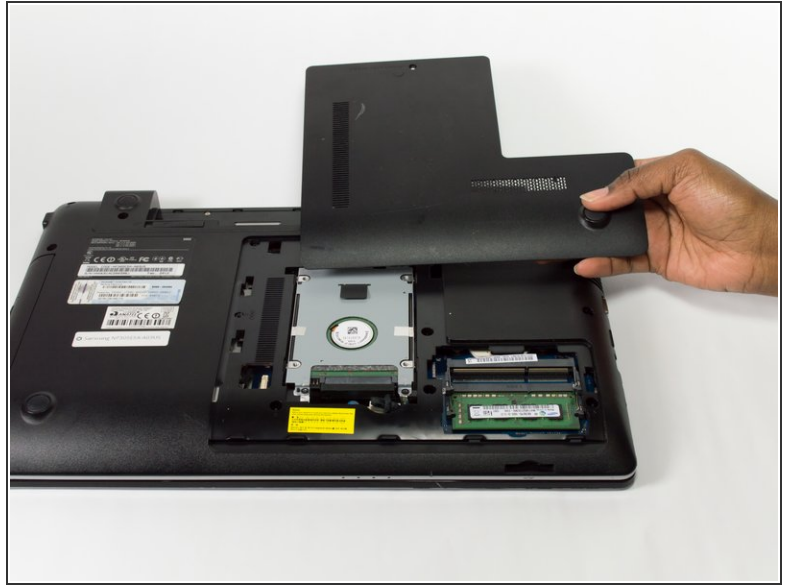
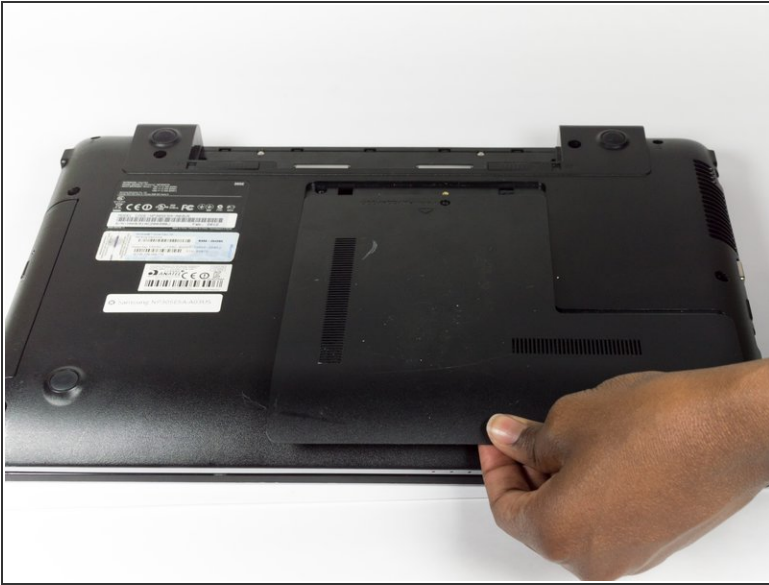
- Unscrew the 3.5mm screws using a Phillips J0 Screwdriver by rotating the screwdriver in the counter clockwise direction.

Step 2



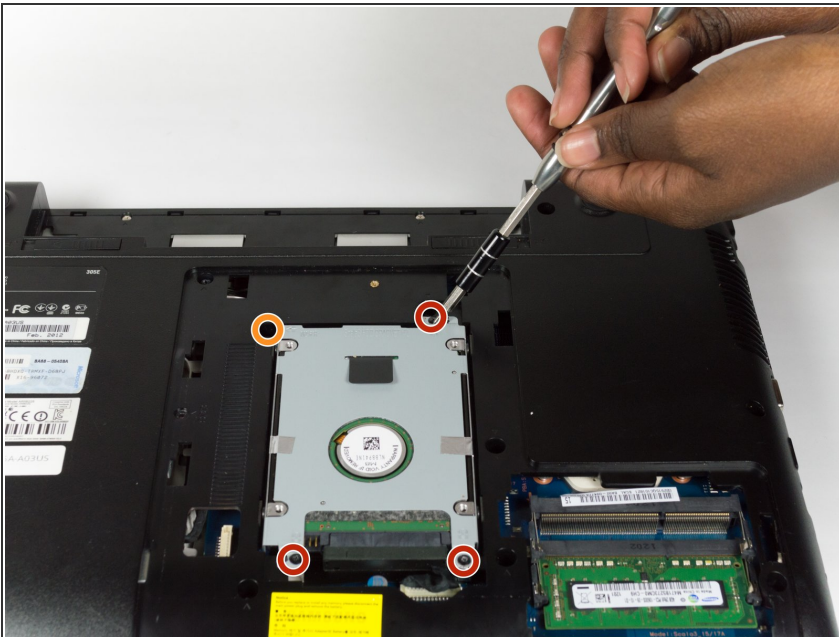
- Wedge the plastic opening tool between the L-shaped back panel to slide the panel off.
- ⓘ Note this may take force. If you have difficulties using the plastic opening tool, try to use your hands to pull the panel off.

Step 3



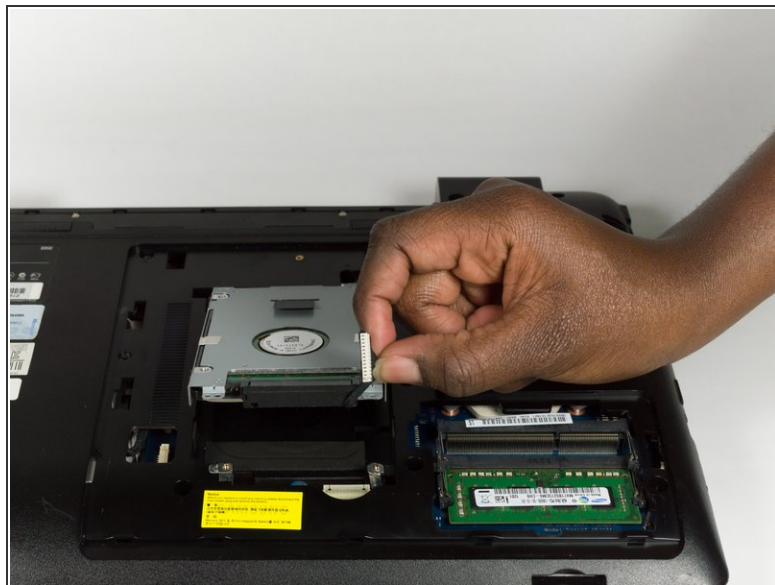
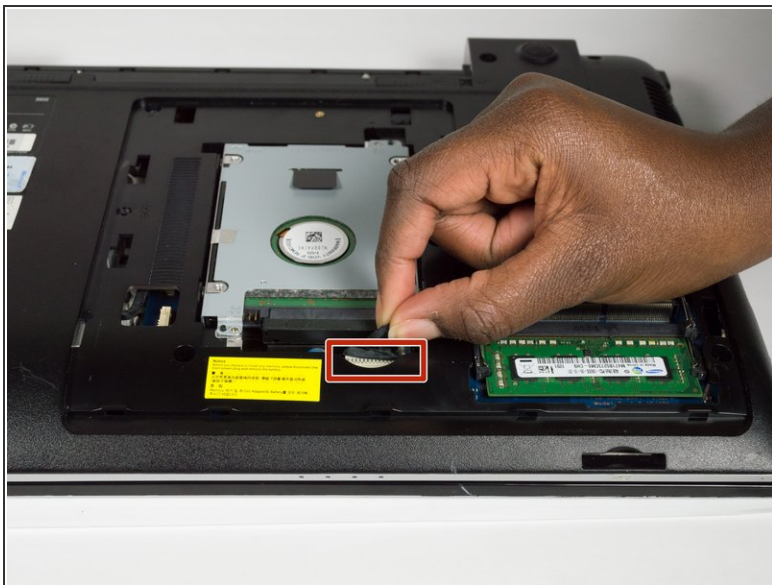
- Pull the panel towards you to remove the panel.

Step 4



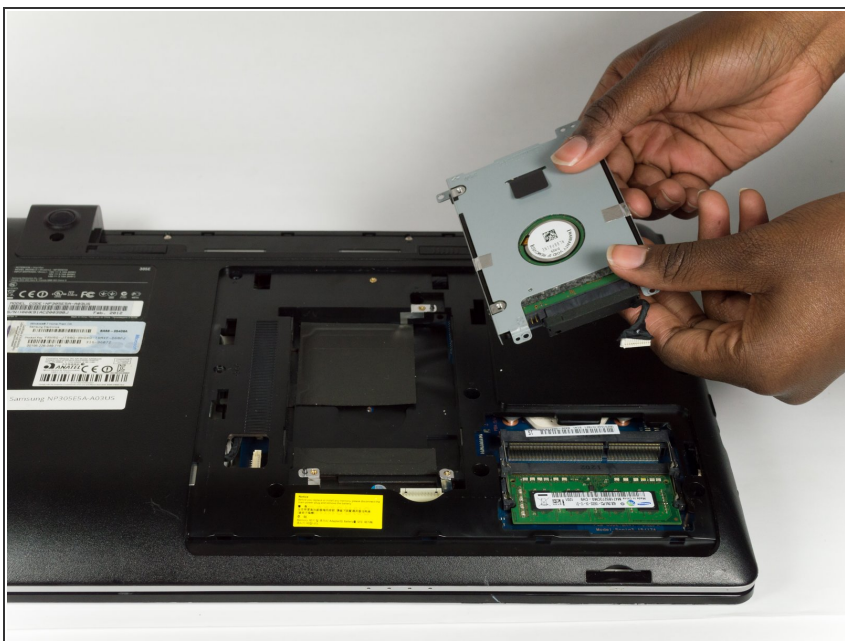
- Unscrew the three 3.5mm screws using a Phillips J0 Screwdriver by rotating the screwdriver in the counter clockwise direction.
- Unscrew the one 4.45mm screws using a Phillips J0 Screwdriver by rotating the screwdriver in the counter clockwise direction.

Step 5



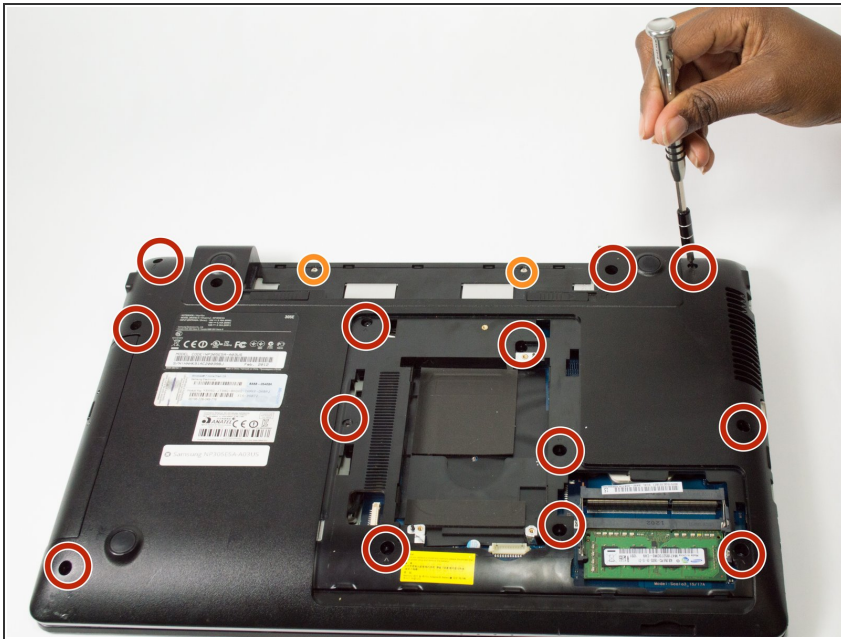
- Pull the cord that connects the Hard Drive to the Motherboard to disconnect it.

Step 6



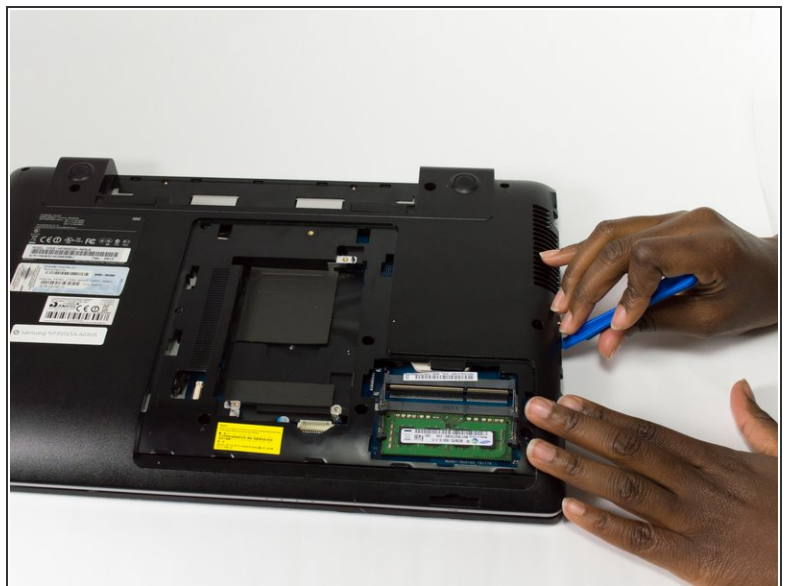
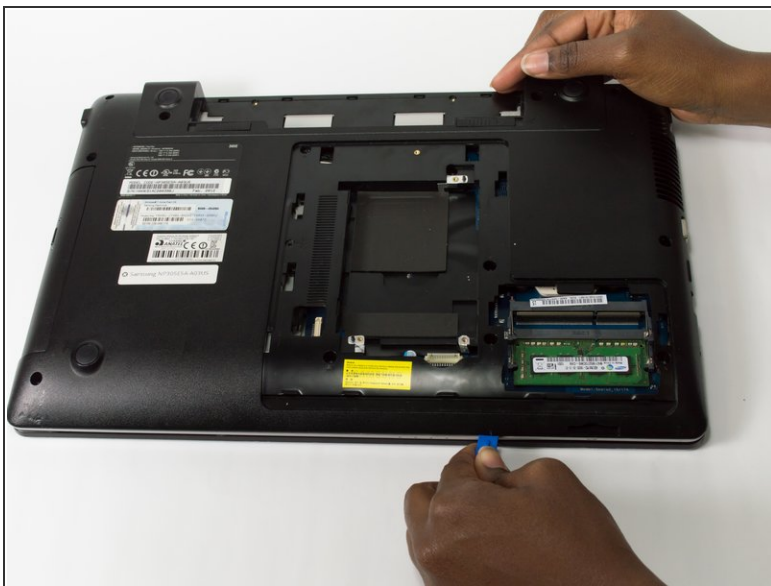
- Remove the Hard Drive by lifting it towards you.

Step 7 — Optical Drive



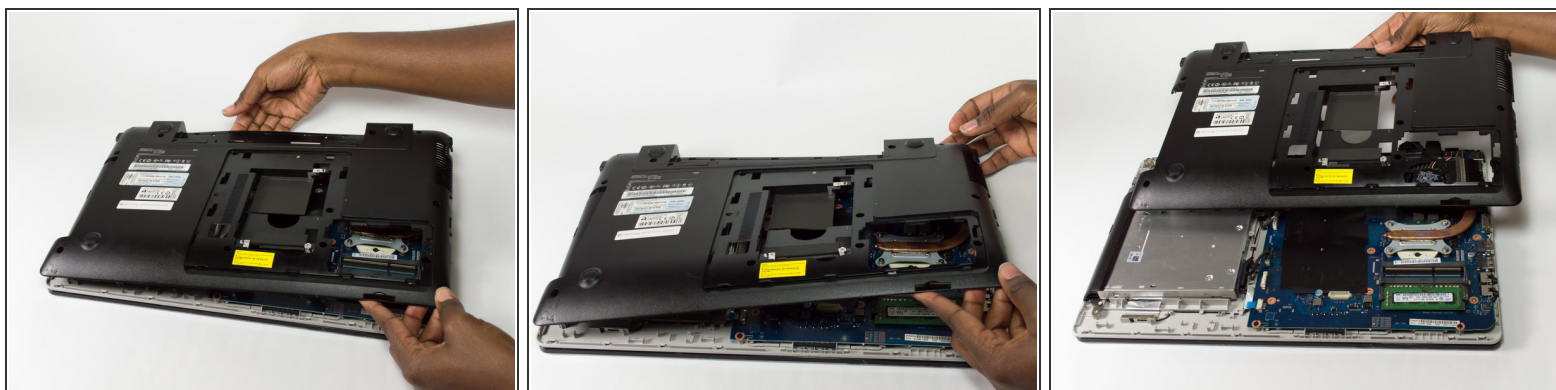
- Unscrew the fourteen 9.5mm screws using a Phillips J0 Screwdriver by rotating the screwdriver in the counter clockwise direction.
- Unscrew the two 3.5mm screws using a Phillips J0 Screwdriver by rotating the screwdriver in the counter clockwise direction.

Step 8



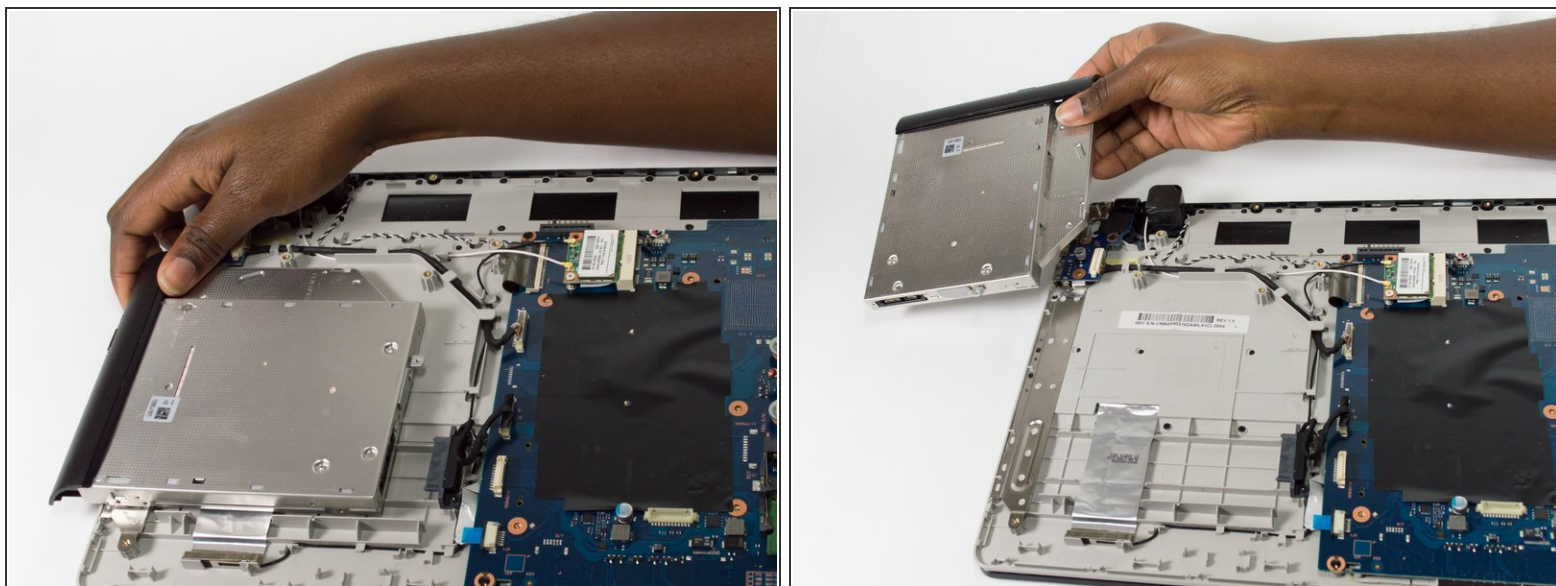
- Insert the plastic opening tool between the seam of the back panel and the laptop.
- Slide the plastic opening tool along the seam to loosen the back panel from the laptop.
- ⓘ It may be difficult to slide the plastic opening tool along the seam, so you may have to apply some force.

Step 9



- Remove the Back Panel by lifting it towards you.
- ⓘ It may take some force to remove the Back Panel.

Step 10



- Remove the Optical Drive by sliding it away from the laptop.

To reassemble your device, follow these instructions in reverse order.