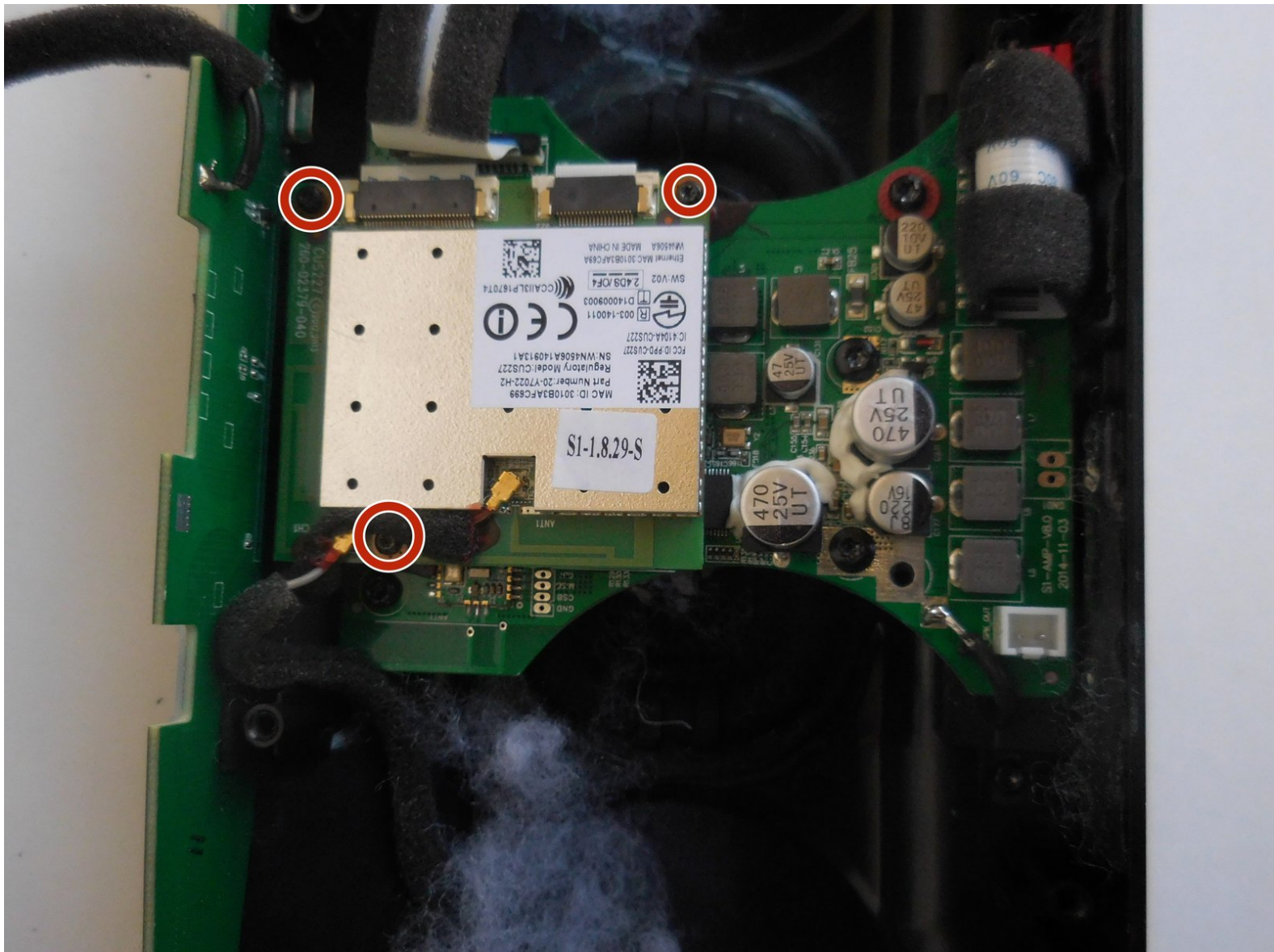




Monster SoundStage S1 Mini Circuit Board Replacement

This guide will show how to remove the circuit board in the Monster Soundstage S1 Mini

Written By: Heather Carrillo

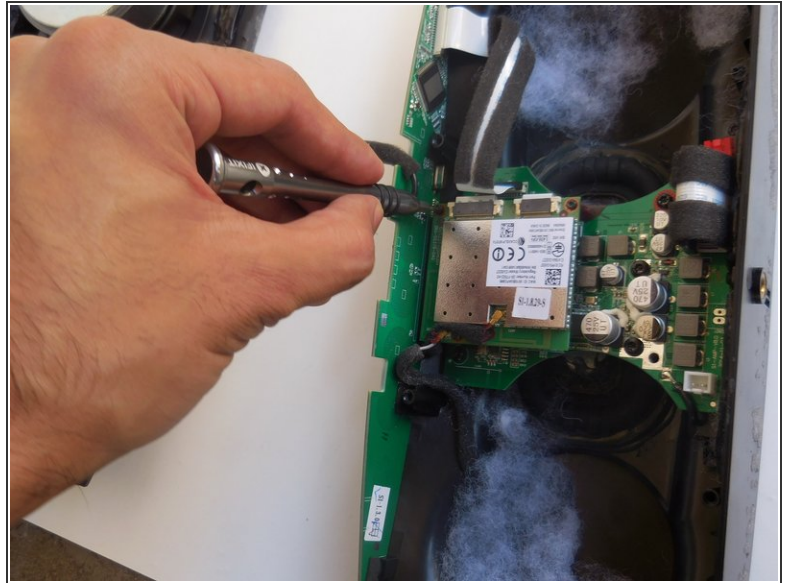
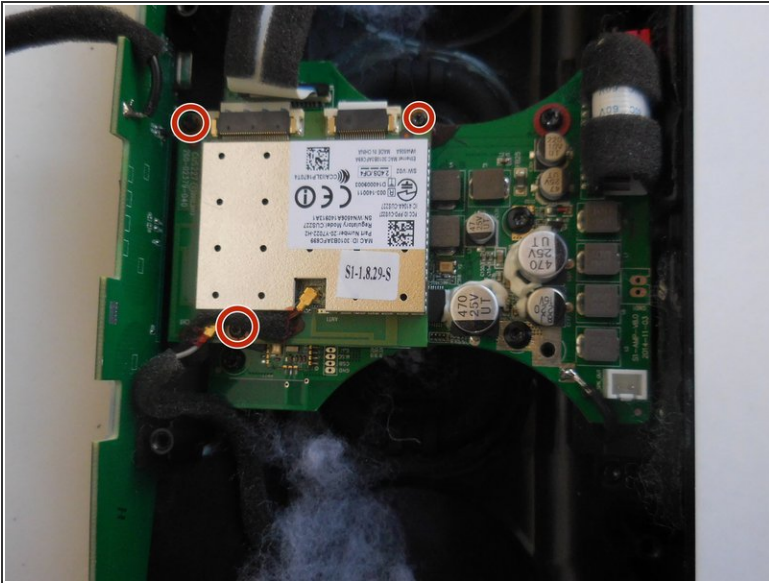




TOOLS:

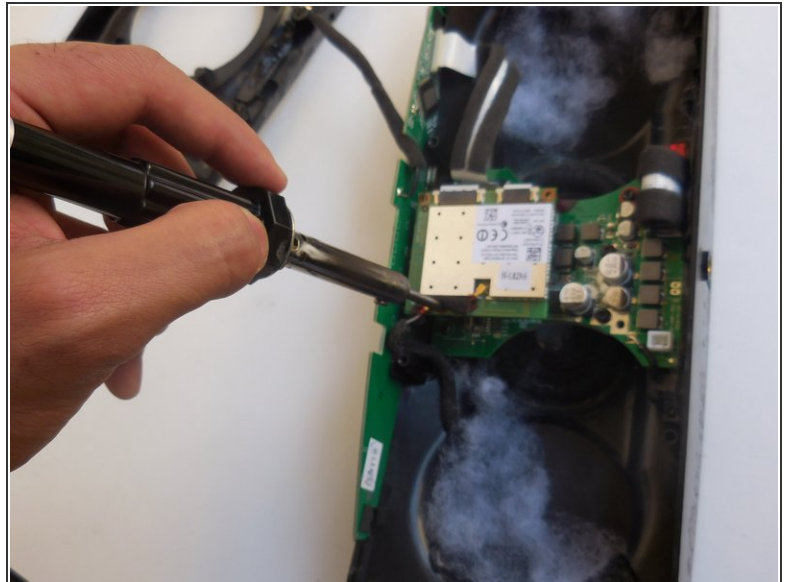
- [T10 Torx Security Bit Screwdriver](#) (1)
 - [Soldering Iron](#) (1)
-

Step 1 — Circuit Board



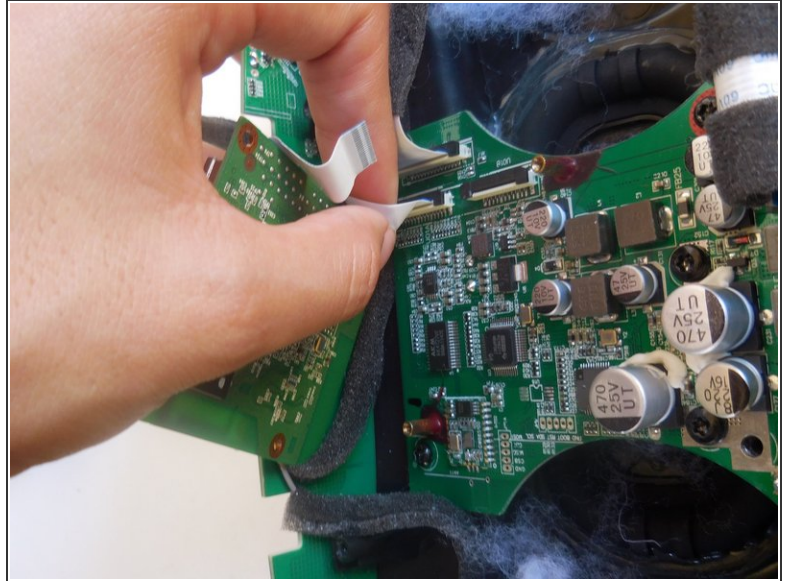
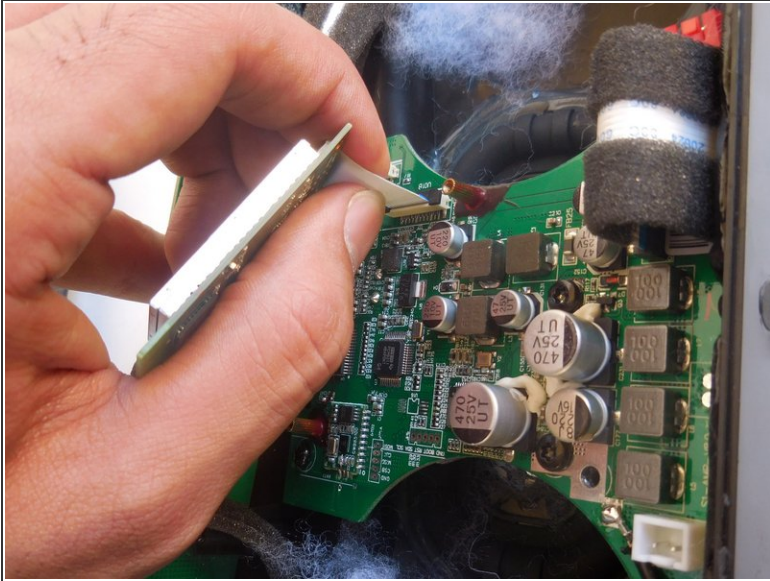
- Remove one 7 mm Torx security screw from the top left corner and two 5 mm Torx security screws from the bottom left and top right corners of the circuit board.

Step 2



- Solder the two wires connecting the circuit board to the motherboard.

Step 3



- Remove the two circuit wires by gently tugging on them.

To reassemble your device, follow these instructions in reverse order.