



Texas Instruments TI-15 Battery Replacement

When your calculator's display turns on and...

Written By: kayla neal



INTRODUCTION

When your calculator's display turns on and right back off, it is time for a new battery. Replacing the battery for the TI-15 will take approximately less than 10 minutes to get you back in business. This guide will show you step-by-step the replacement for a TI-15 battery.

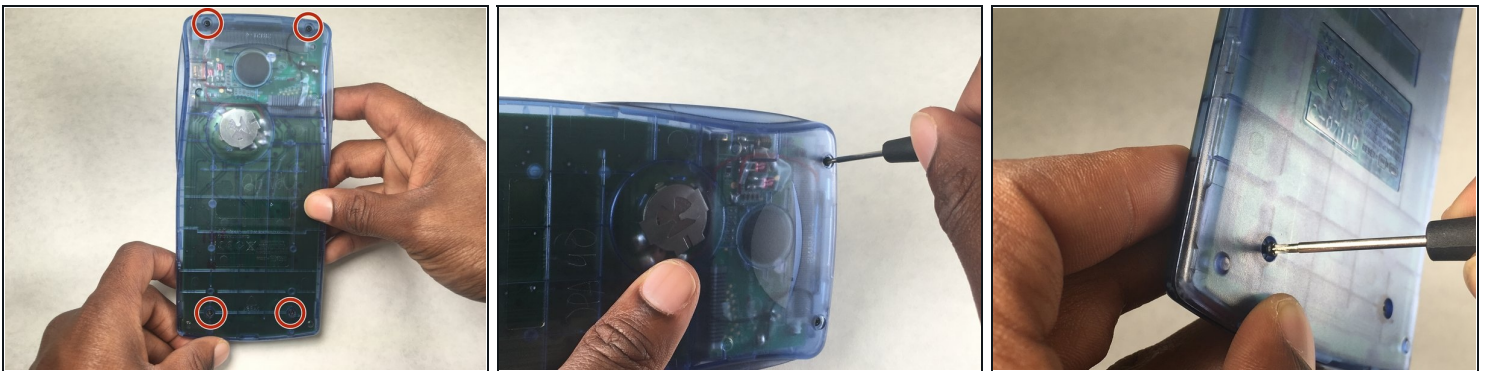
🔧 TOOLS:

[Phillips #0 Screwdriver](#) (1)
[iFixit Opening Tool](#) (1)

⚙️ PARTS:

[CR2032 Lithium Battery](#) (1)

Step 1 — Battery



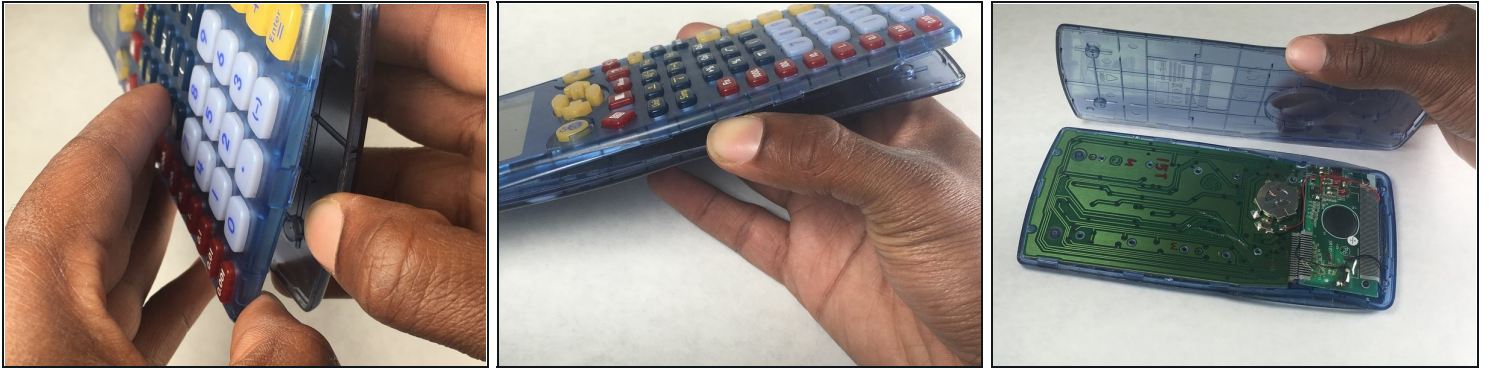
- With a Y000 screwdriver, loosen the four 1mm Phillips head screws and set them aside.

Step 2



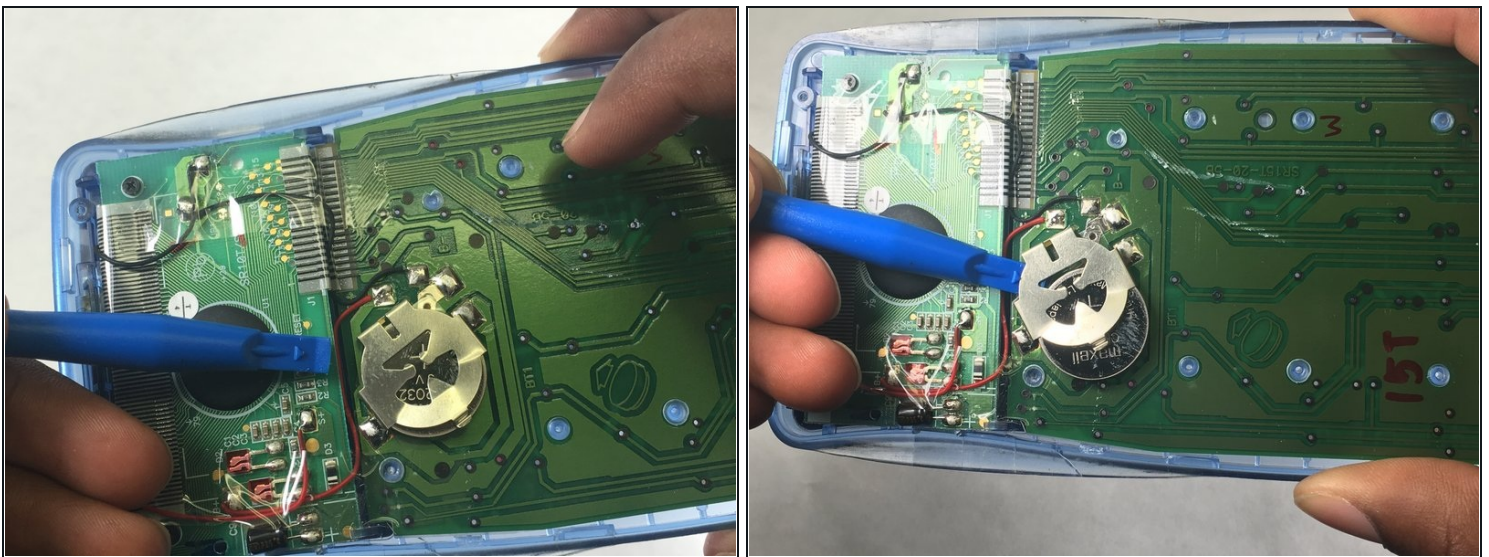
- With an iFixit opening tool, pry apart a total of 3 notches on the top and bottom of the calculator.

Step 3



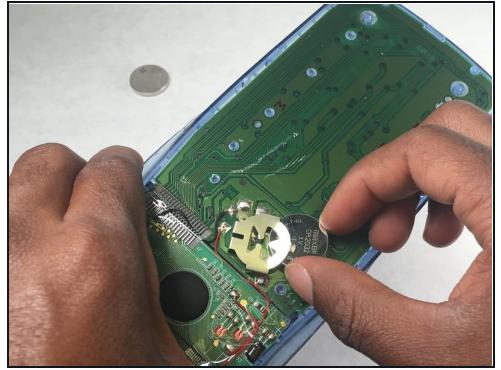
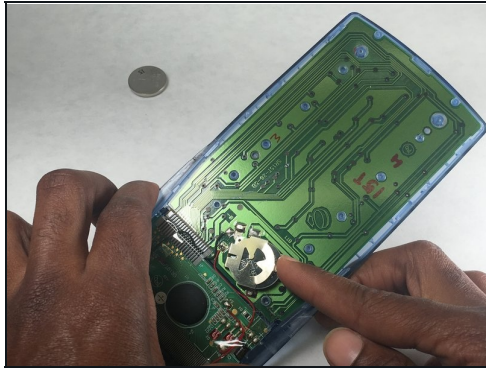
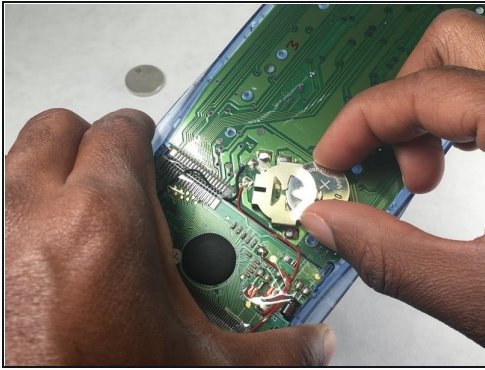
- Separate the two panels to reveal the calculator's green circuit board.

Step 4



- Using the iFixit opening tool , slide underneath the battery cover until the battery comes out.

Step 5



- Remove the old battery and insert the new battery.

① Properly dispose or recycle the old battery.
