



Palm m 100 Display Screen Replacement

This guide will enable users to replace a cracked or damaged display screen.

Written By: Lexi Gallucci



INTRODUCTION

This guide will provide instructions and visuals on how to replace the display screen.



TOOLS:

- [T5 Torx Screwdriver](#) (1)
-

Step 1 — Display Screen



- Remove the batteries.

Step 2



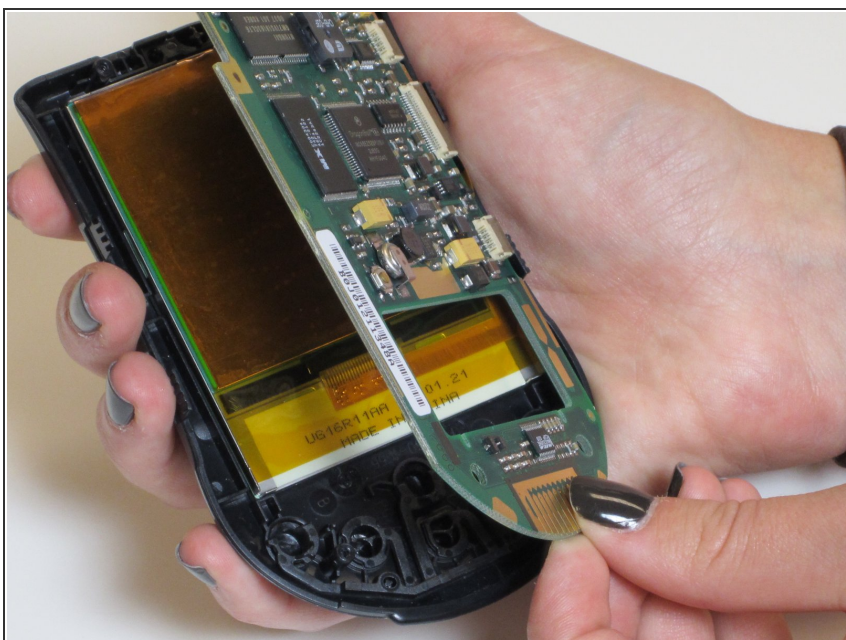
- Using a Torx 5 screwdriver, remove the four screws located on the rear cover of the device by turning counterclockwise. Set aside screws.

Step 3



- Remove rear cover by gently lifting it up from the bottom.

Step 4



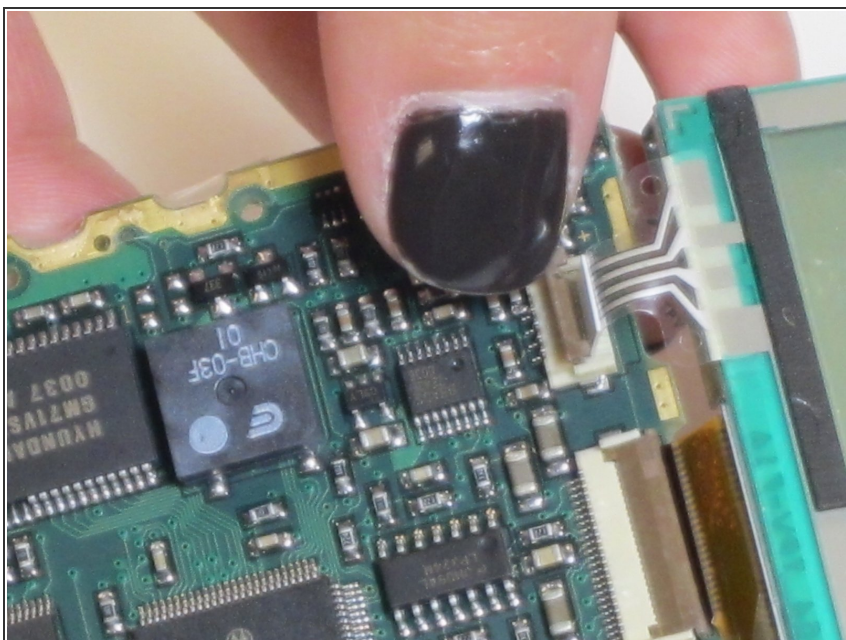
- Carefully lift up the circuit board, which will also lift up the screen. Do so carefully to prevent breaking the connectors.

Step 5



- Lift the left side of the circuit board and open it as though it were a book.

Step 6



- Unplug the three connectors located on the right side of the circuit board with great caution and care. Do not pull by the cable, and be sure to pull the connector itself gently.

Step 7



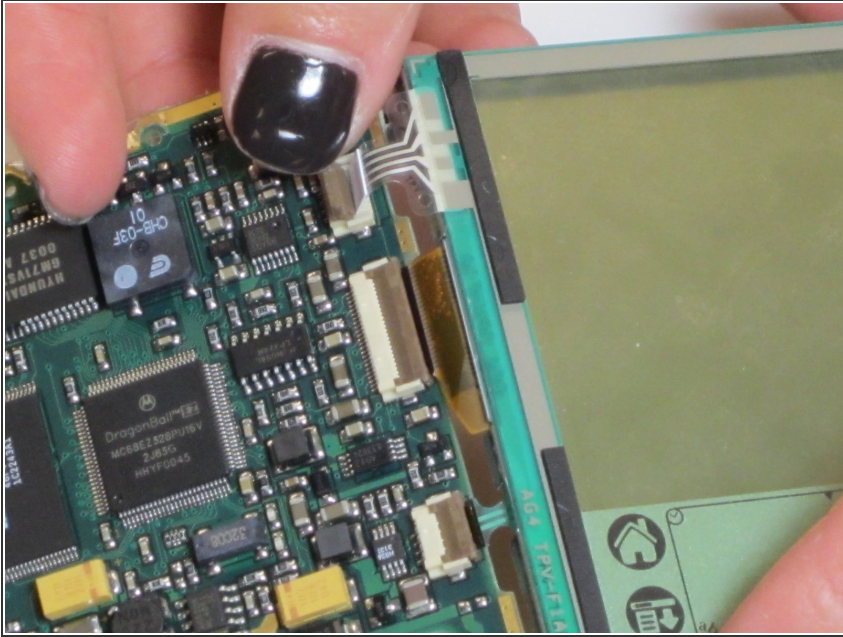
- After separating the screen from the board, set aside the old display screen.

Step 8



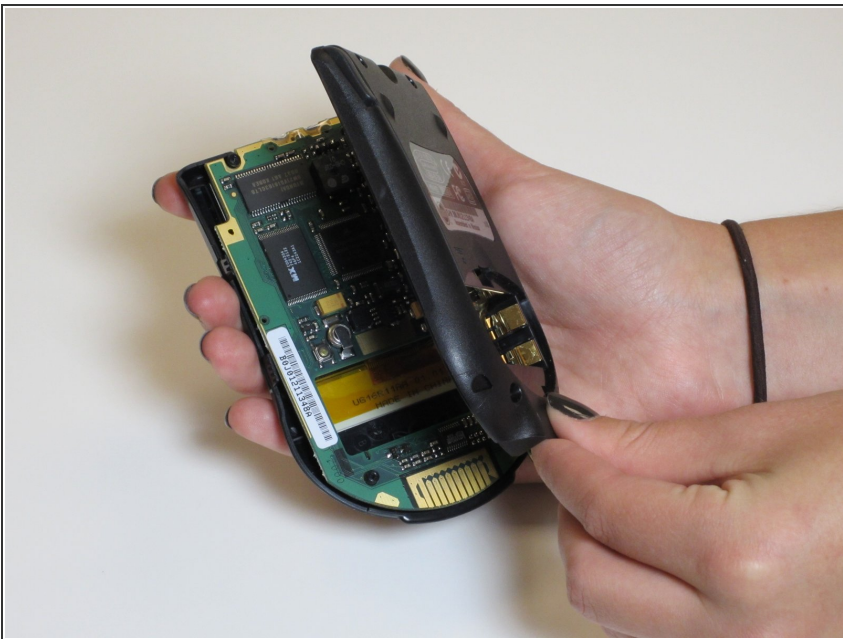
- Replace with a new display screen.

Step 9



- Plug in the three connectors.

Step 10



- Close again like a book, and lay it gently into the front panel, screen facing outwards of the front panel.

Step 11



- Put the back cover on the device and screw the four screws, screwing in a clockwise direction. Take caution not to over-tighten the screws.

To reassemble your device, follow these instructions in reverse order.