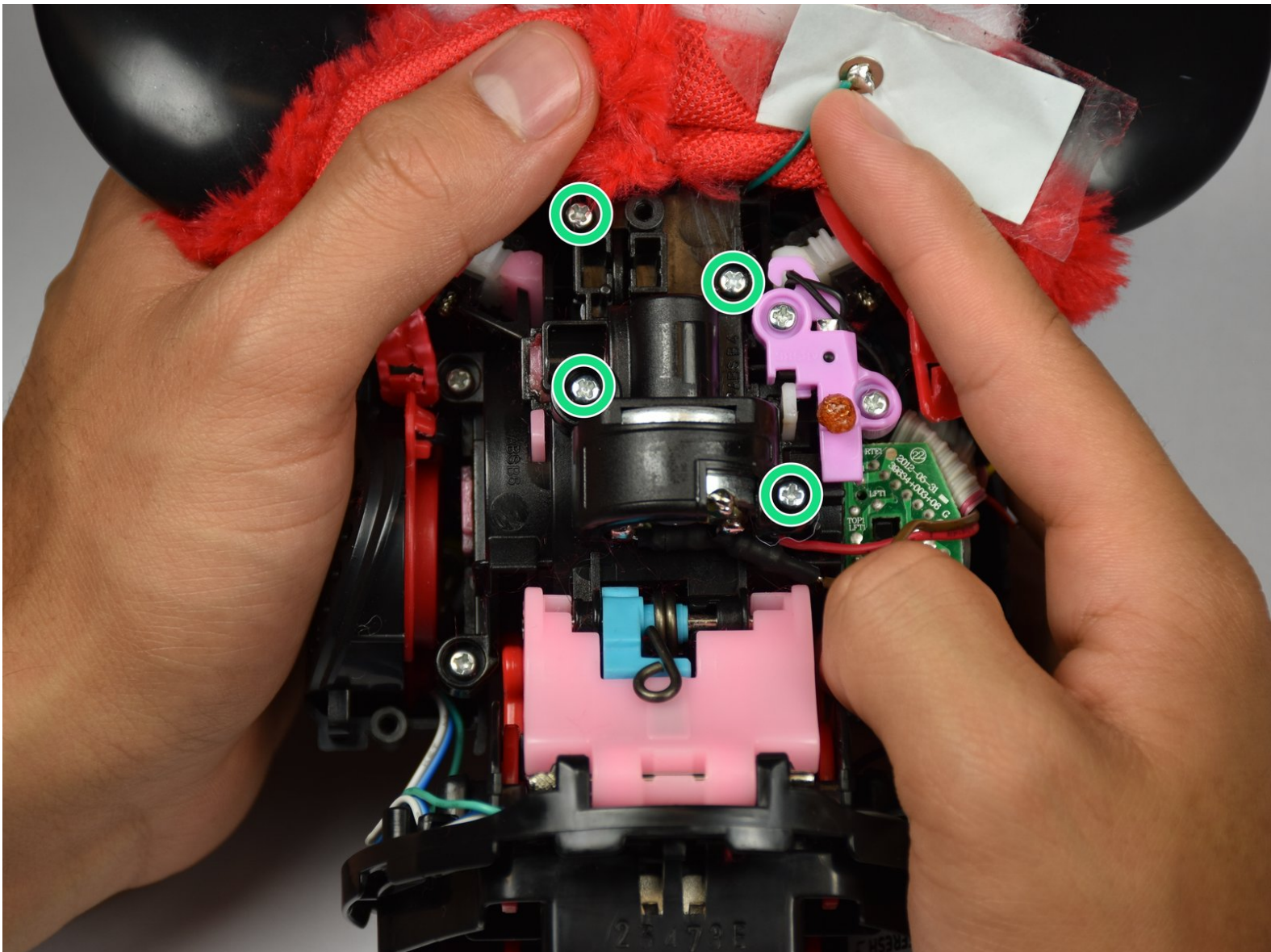




# Hasbro furby 2012 DC Motor Replacement

Follow these steps to remove Furby's DC motor.

Written By: Jordan Castillo



## INTRODUCTION

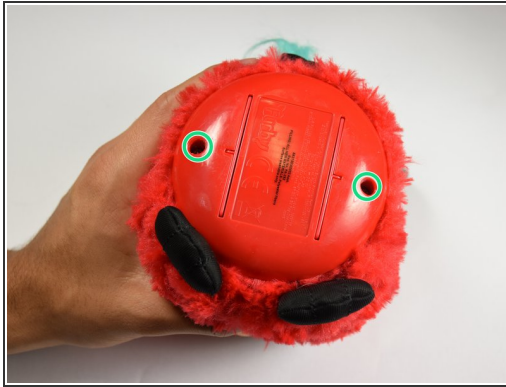
Replacing the DC motor requires you remove the back panel and light sensor circuit board. The most difficult part of this replacement is removing the clips holding the fur on to the back panel.

---

### TOOLS:

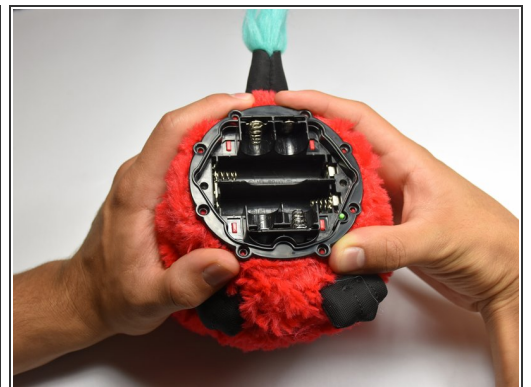
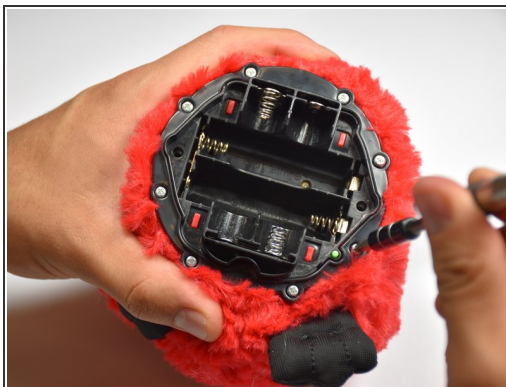
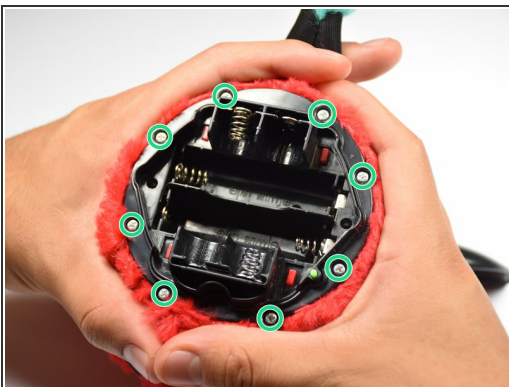
- [Phillips #0 Screwdriver](#) (1)
  - [Flathead 3/32" or 2.5 mm Screwdriver](#) (1)
  - [1.0 mm Flathead Screwdriver](#) (1)
  - [Tweezers](#) (1)
-

## Step 1 — Outer Shell



- Use a flathead screwdriver to remove the two 10mm screws on the base of the Furby.

## Step 2

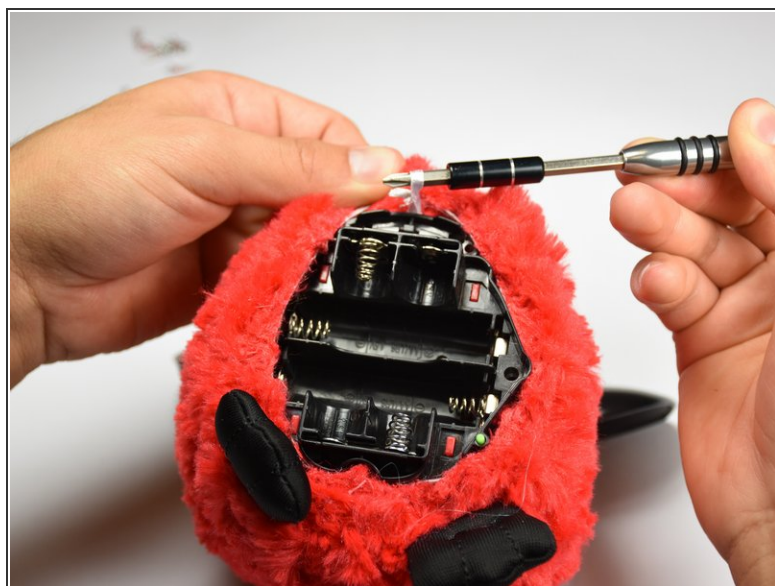
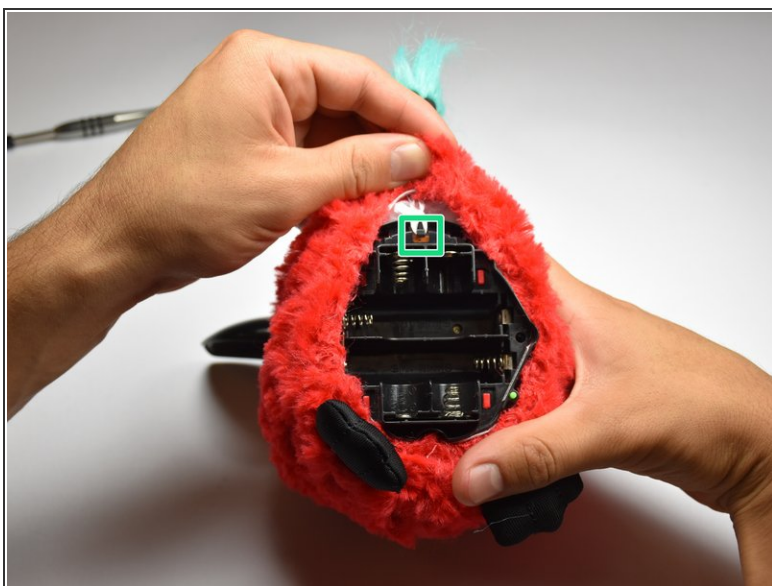


- Use a Phillips #0 driver to unscrew the eight 10mm screws.
- Remove the base ring after unscrewing all the screws.

⚠ Be careful when lifting the base ring from the Furby. There are sharp edges that hold the base ring in place.

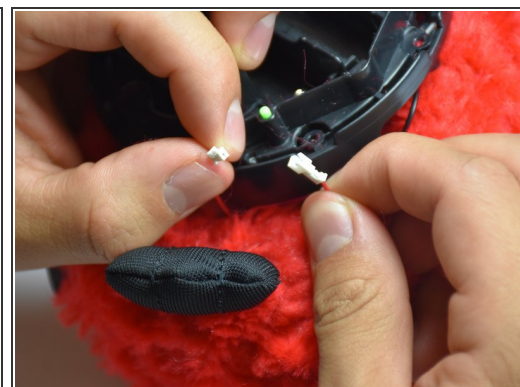
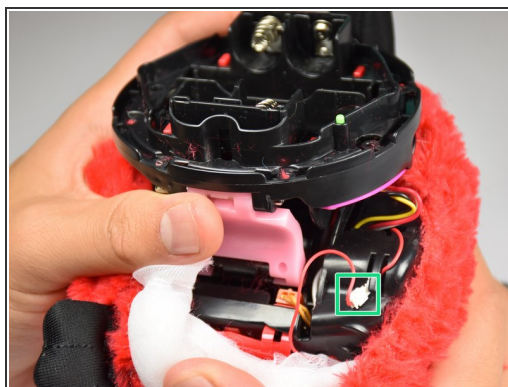
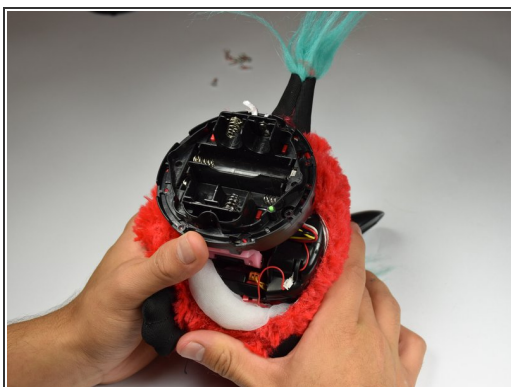


### Step 3



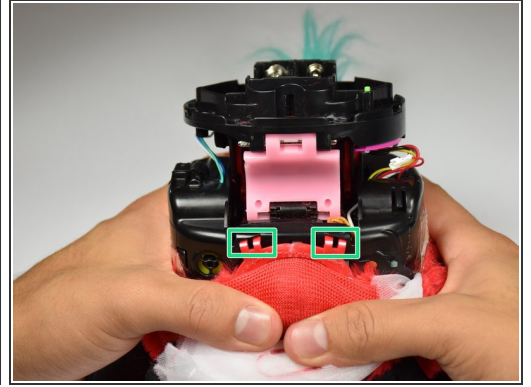
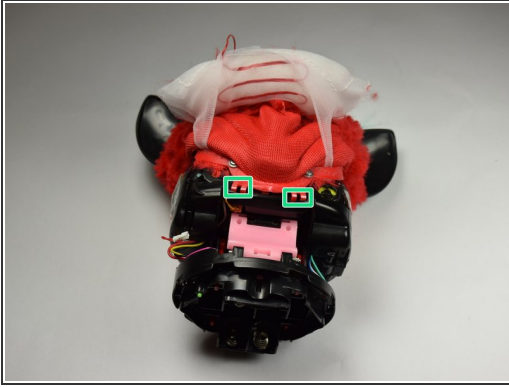
- Unhook the white ribbon from the tab on the base.

### Step 4



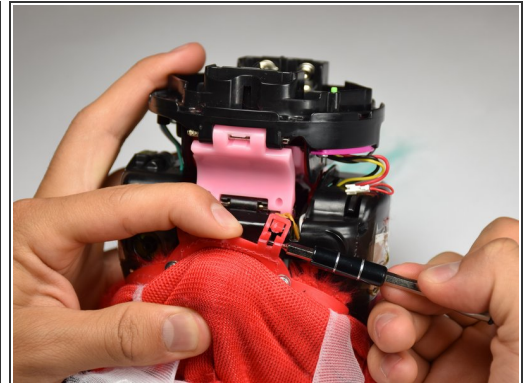
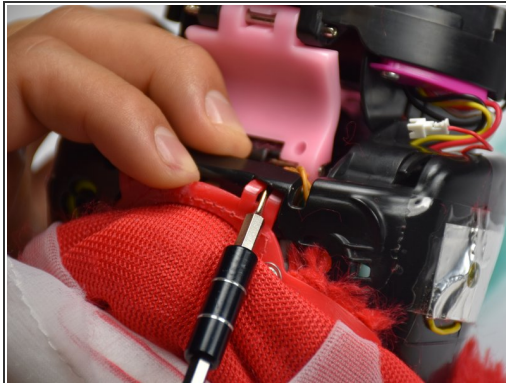
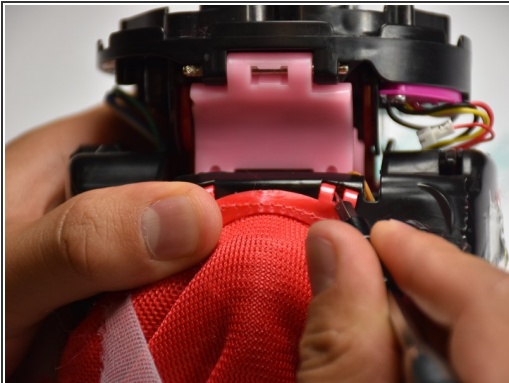
- Roll the Furby's fur downward.
- Disconnect the now exposed red wire.

## Step 5



- Locate the two middle clips first.
- Locate the two remaining clips on Furby's sides, they are opposite each other.
- Orient the Furby upside down with the tail facing away from you.

## Step 6



- Insert a metal prying tool directly into the clip opening.
- Press upward into the clip. At the same time, use your other hand to pull away the plastic seam from the Furby's body.
- Repeat the previous step to remove the remaining three clips.



## Step 7



- Locate the two 10mm screws and remove them with the Phillips #0 head screwdriver.
- Lift up on the fur covering until the face of the Furby is exposed.

## Step 8



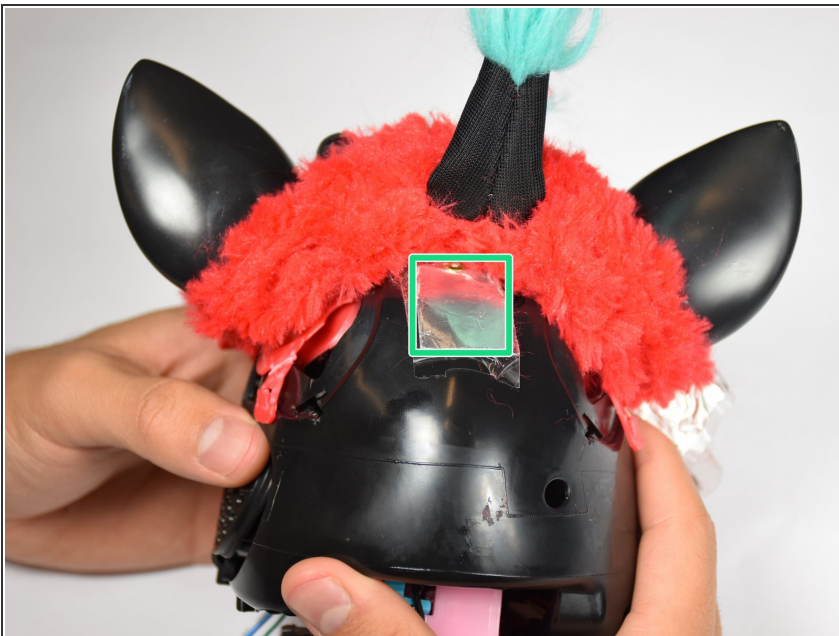
- Orient the Furby on its side to where the beak is facing left and locate the edge of the aluminum tape.
  - Lift tape gently and peel back until the tape is nearly removed.
- ⚠ Do not pull on the yellow wire located on the opposite end of the tape.

## Step 9



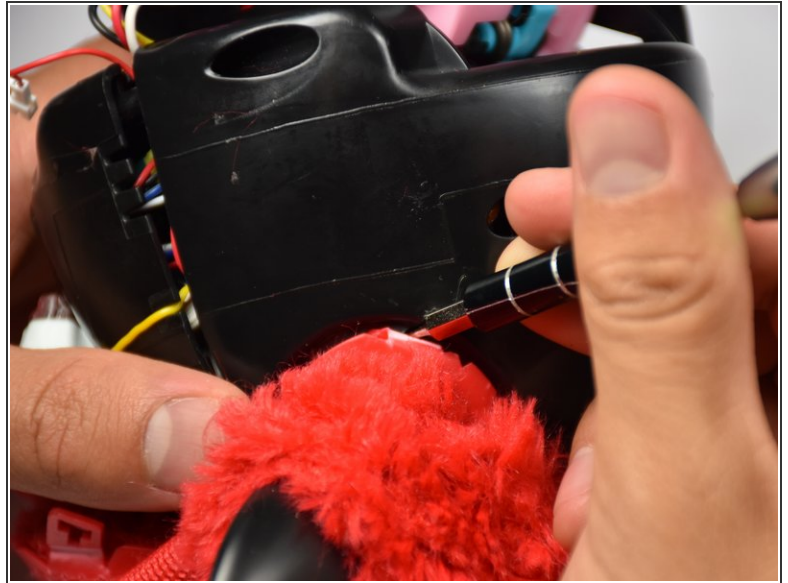
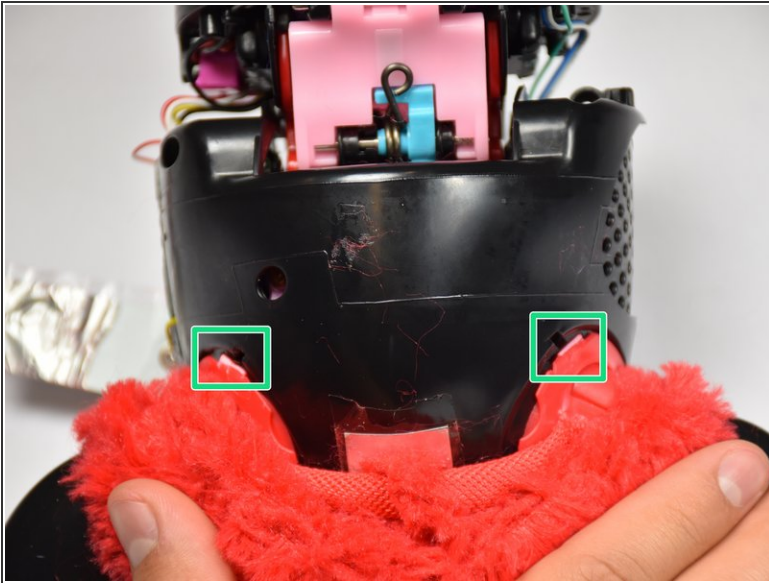
- Locate the four 10mm screws. Two on either side of body, and two on top of back plate, around the tape.
- Remove the 10mm screws with the Phillips#0 screwdriver.

## Step 10



- Peel the tape gently, grabbing it from the bottom edge and folding the tape upward.
- ⓘ Peel the tape up until it is nearly detached from the black case.

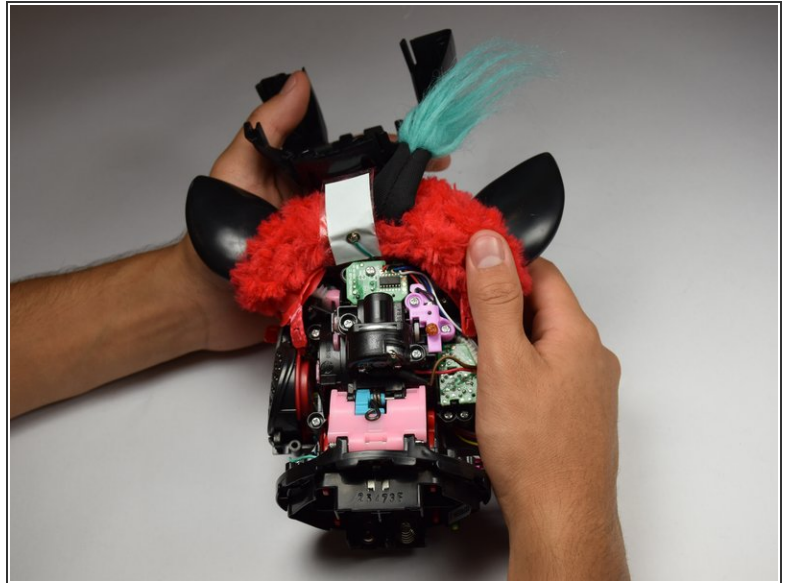
## Step 11



- Orient the Furby face down, with the base facing away from you.
- Locate the clips below the ears.
- Repeat the technique used in Step 6. Create leverage using a metal prying tool to press upward into the clip, while also pulling back on the clip itself.

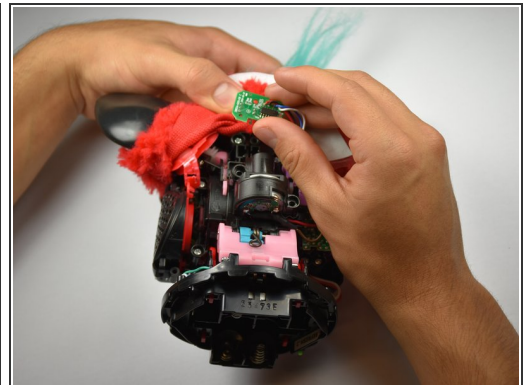
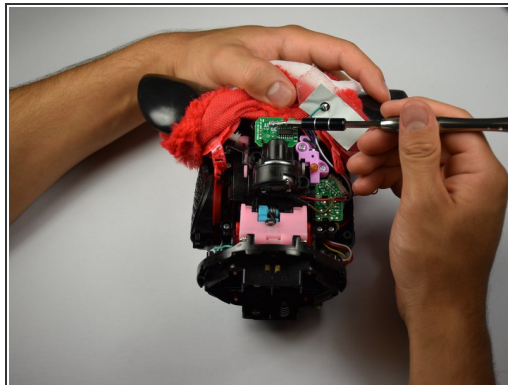


## Step 12



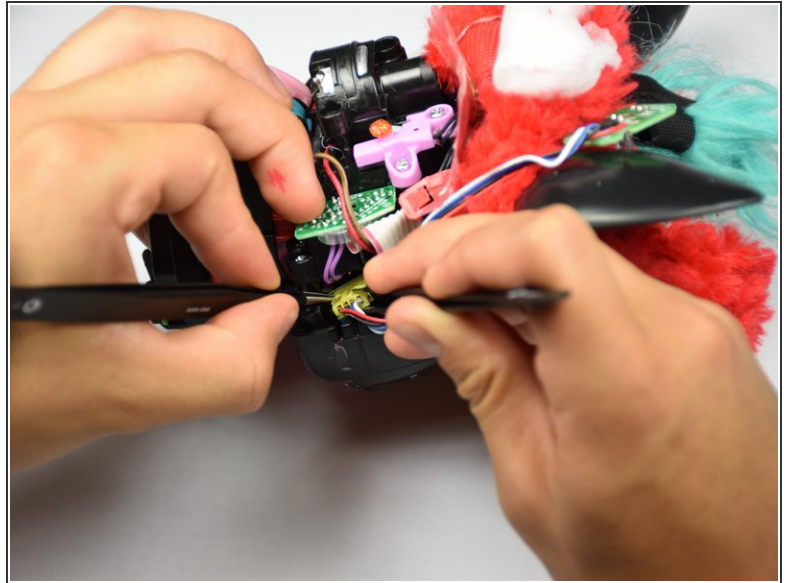
- Remove the loose, plastic back panel by pulling the panel away from Furby's body.

## Step 13 — Light Sensor



- Remove the 10mm Phillips #0 screw holding the circuit board in.
- Gently lift out the circuit board.

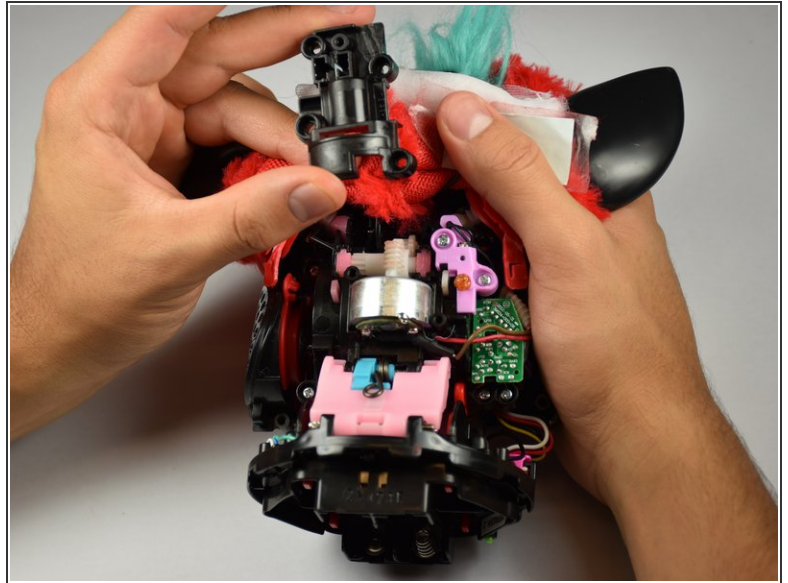
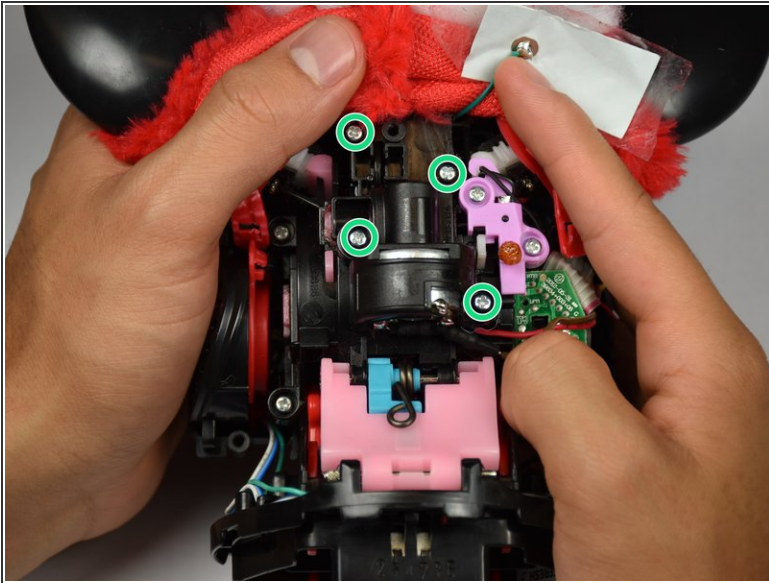
## Step 14



- Orient the Furby with the tail pointing left and the face pointing right.
- Use the pointed tweezers to spread open the socket, and the blunt tweezers to grip and tug out the connector.
- Insert your replacement light sensor connector.

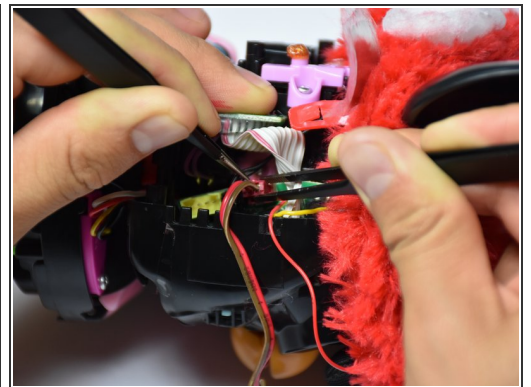
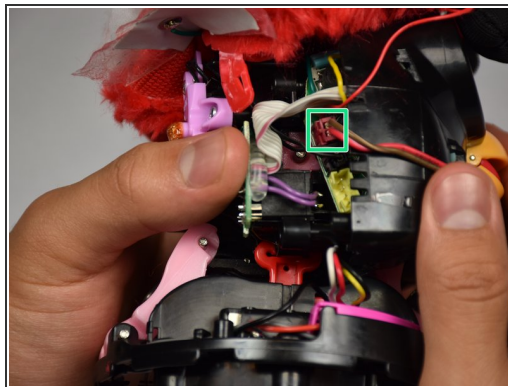


## Step 15 — DC Motor



- Unscrew the four screws holding the motor housing in place.
  - Remove the motor housing.
- ⚠ There is lubricant on and around the DC motor, be careful when handling.

## Step 16



- Orient Furby with the beak facing right.
- Locate the red DC motor connector.
- Gently remove the connector using blunt and pointed tweezers.



To reassemble your device, follow these instructions in reverse order.