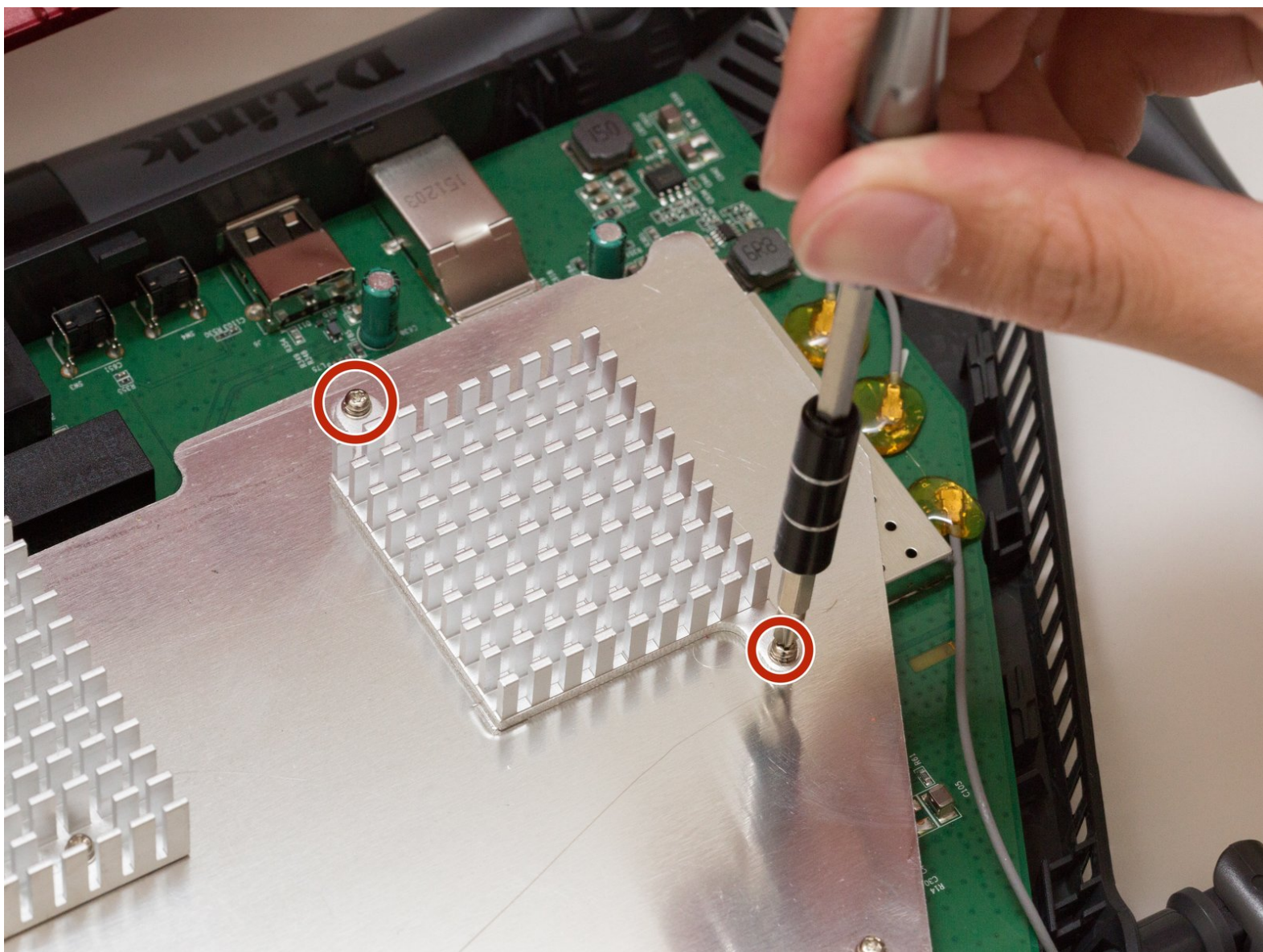




D-Link DIR-890L Heat Sink Replacement

If your device is overheating, this will guide will solve that by replacing the heat sink of the device.

Written By: Michael Hilomen



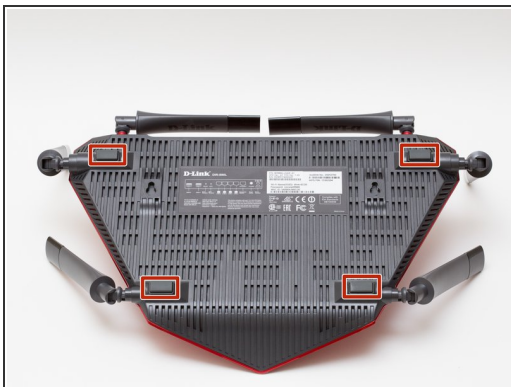
INTRODUCTION

The heat sink is responsible for regulating the heat flow and temperature control in your device. If your device is overheating and not cooling itself down properly, then the heat sink will need to be replaced. Follow this guide for the steps on how to replace the heat sink.

TOOLS:

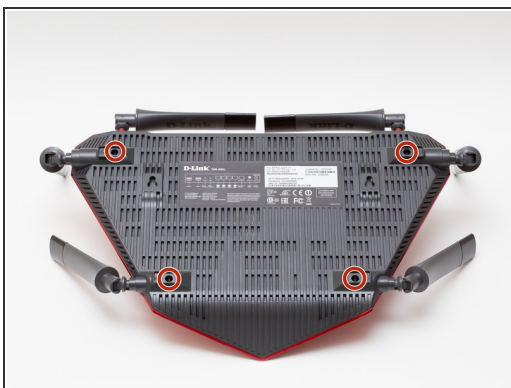
- [Phillips #1 Screwdriver](#) (1)
 - [iFixit Opening Tools](#) (1)
-

Step 1 — Case



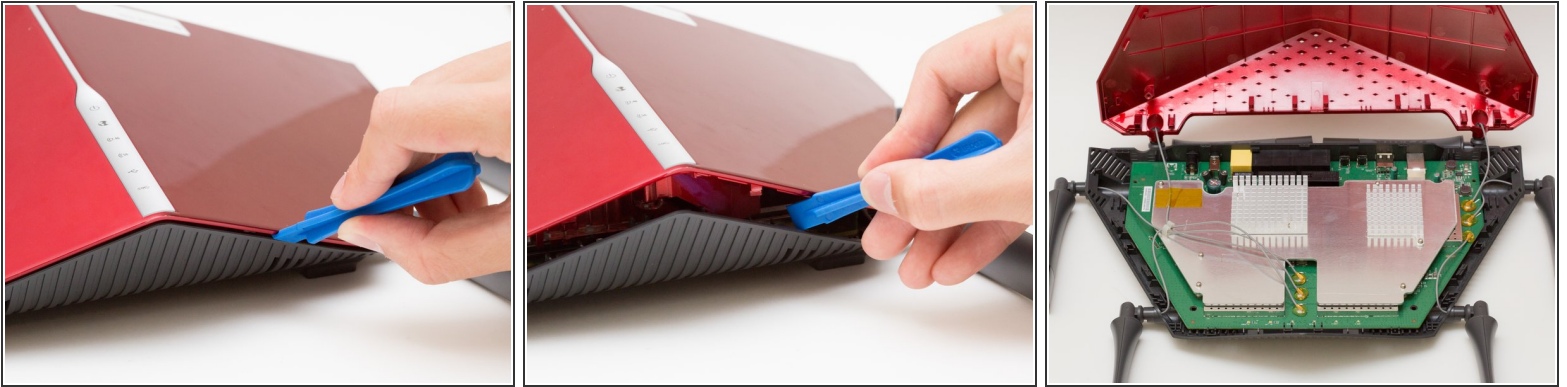
- Peel off the four rubber rectangular feet with your fingers.
- ⓘ The feet may be hard to remove. Apply additional force if necessary.

Step 2



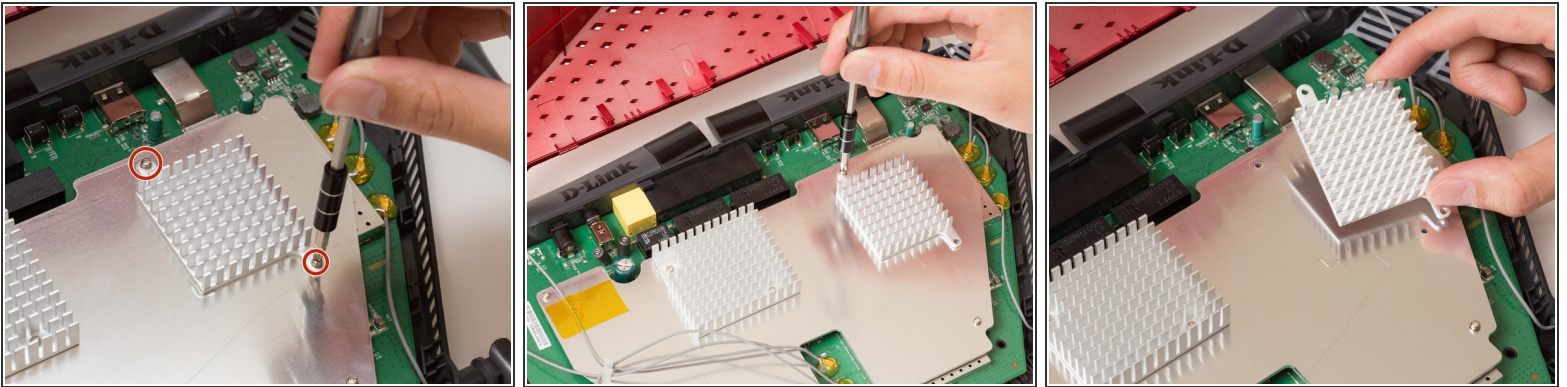
- Unscrew the 5mm screws in each corner using the Phillips #1 screwdriver.

Step 3



- Wedge the opening tool between the red top panel and the gray bottom panel.
- Twist the opening tool to separate the panels. Work your way around the case until both of the panels are separated.

Step 4 — Heat Sink



- Unscrew the two 7mm screws with a Phillips #1 screwdriver.
- Lift the heat sink off the metal plate with your fingers.

To reassemble your device, follow these instructions in reverse order.