



# Samsung NX500 Screen Assembly Replacement

If your screen shows pitch black or if it's cracked, this guide will deliver steps on how to replace it.

Written By: Eli Carcalete



---

## INTRODUCTION

A cracked screen or broken LCD are reasons as to why you should replace the screen. Make sure you absolutely have to replace the screen before you take on this task.

---



### TOOLS:

- [Phillips #000 Screwdriver](#) (1)
-

## Step 1 — Battery



- Pull the switch on the bottom of the camera back with your thumb.

## Step 2



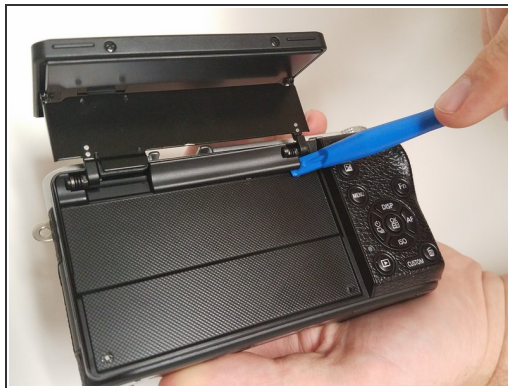
- Push second switch(blue) forward with your thumb.

### Step 3



- Pull out battery.

### Step 4 — Screen Side Encasement



- Open the screen exposing the hinge cover and place the plastic opening tool inside.
- Pry the hinge cover up by moving the plastic opening tool in a downward motion.
- Remove the black 4mm Phillips #000 screw that is revealed once the hinge cover is removed.

## Step 5



- Unscrew the two 4 mm Phillips #000 screws on the right hand side of the camera using the screwdriver.
- Unscrew five more 4 mm Phillips #000 screws that are located at the bottom of the camera with the screwdriver.
- ⓘ In the second step, do not the remove the two 4 mm Phillips #000 screen on the screen.
- Remove the last exterior 4 mm Phillips #000 screws on the left hand side of the camera with the screddriver.



## Step 6




- Use the plastic opening tool in a downward motion around each side of the camera to pry the casing open.

⚠ The casing should be removed easily; you shouldn't have to use much force.

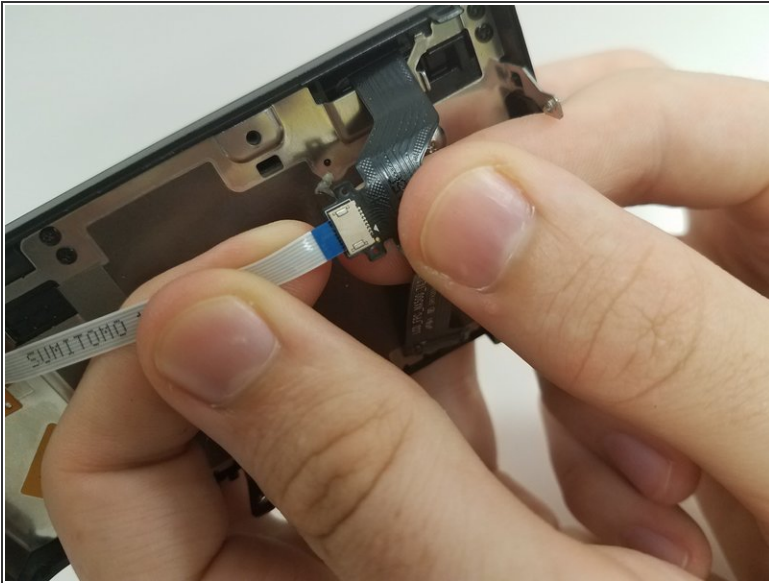
## Step 7



- Locate the black ribbon at the bottom left of the camera's interior.
- Place the plastic opening tool under the black ribbon connector.
- Remove the cable by moving your plastic opening tool in a downward motion.

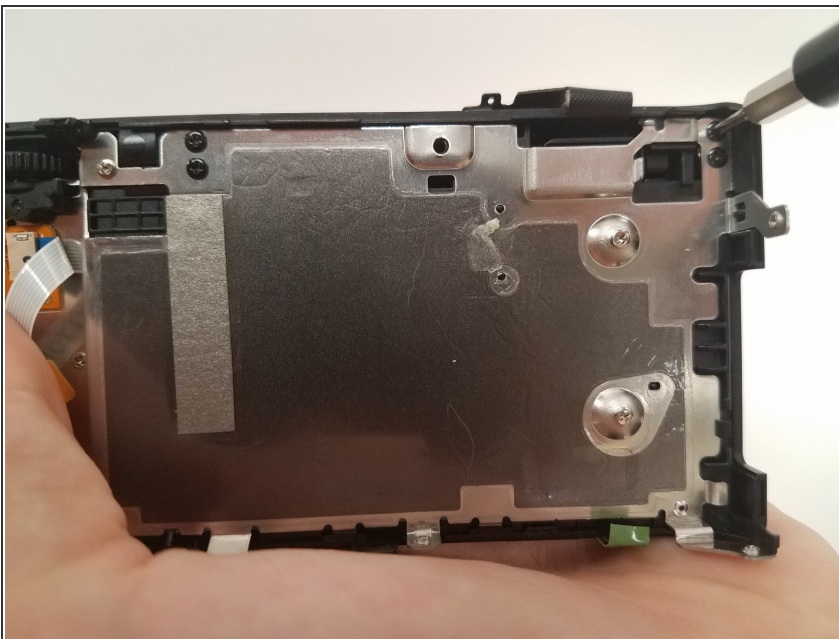
 There is zero to little force needed to remove this ribbon.

## Step 8 — Screen Assembly



- Locate where the white ribbon cable connects to the black LCD cable.
- Using both hands, separate the cables by pulling them away from each other.

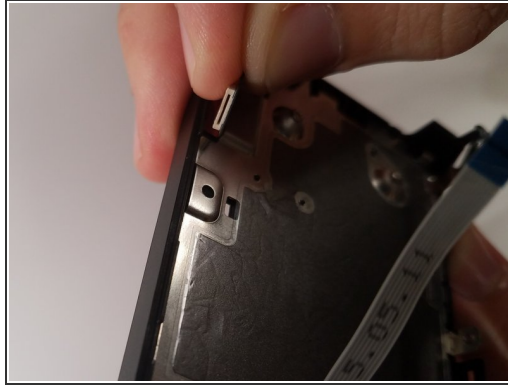
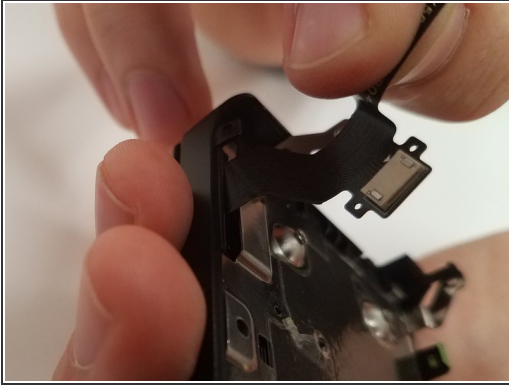
## Step 9



- Remove the four black 2-mm Phillips type 000 using the screwdriver.
- **Remark** : Since these four screwdrivers are easilly loosen during normal handling, be sure that screw them very fasten or screw with a bond suck like Loctite when reassembling.



## Step 10



- Carefully grab the LCD cable and begin to guide it through the hole it comes enters from.
- Maneuver the connector through the exit site.
- Carefully pull the cable through from the exterior of the screen encasement.

To reassemble your device, follow these instructions in reverse order.