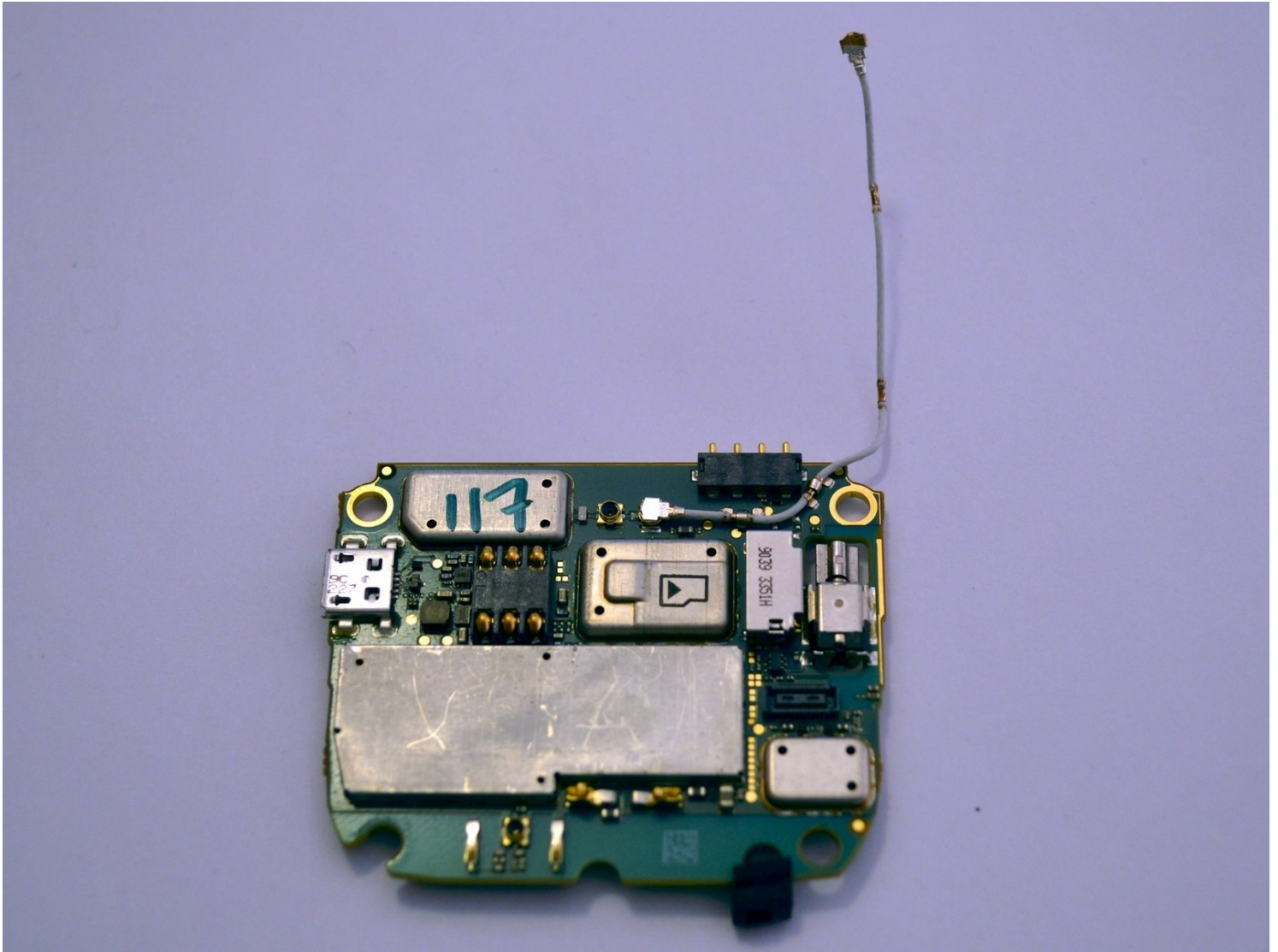




BlackBerry Curve 8900 Motherboard Replacement

Written By: Johnny Tran

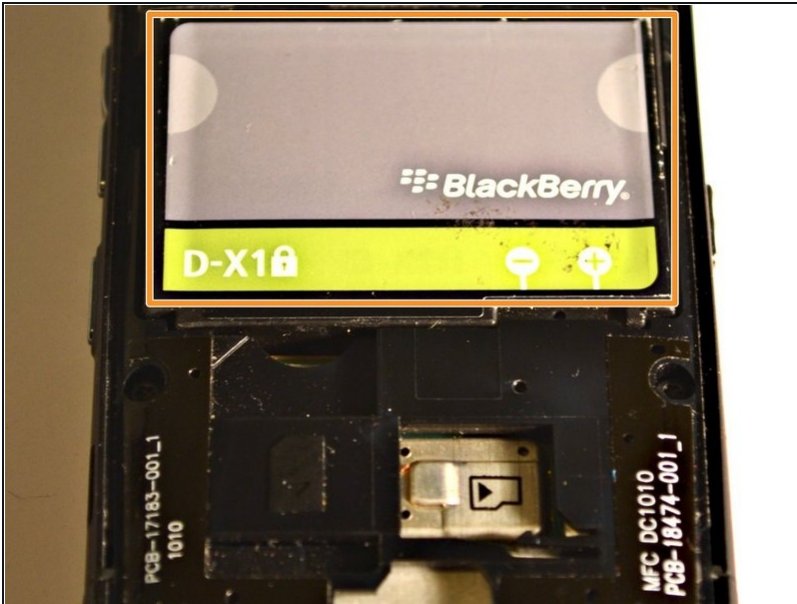


TOOLS:

T6 Torx Screwdriver (1)

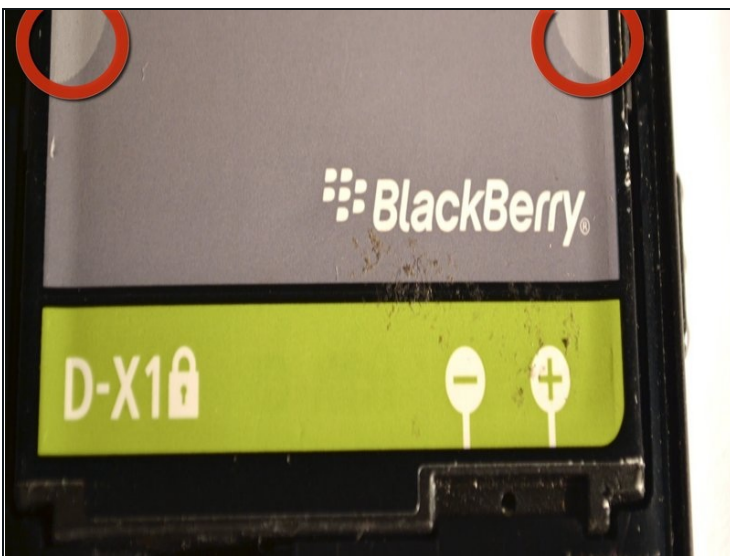
iFixit Opening Tool (1)

Step 1 — Battery



- Remove the back cover of the phone.
- The battery will now be visible.

Step 2



- Pinch the battery at the grey semi-circles on the top left and top right corners of the battery using your fingers and remove it from the device.

Step 3 — Motherboard



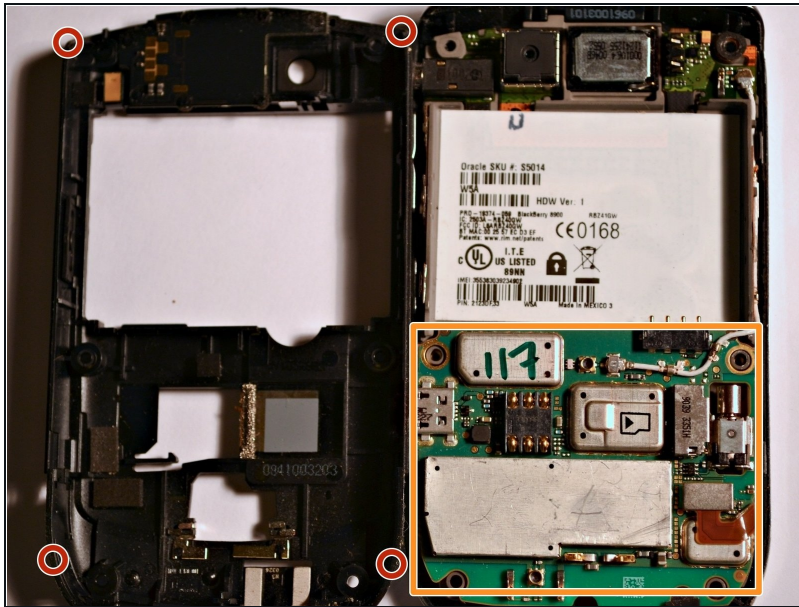
- Remove the lower rear cover, using a small iFixit opening tool.

Step 4



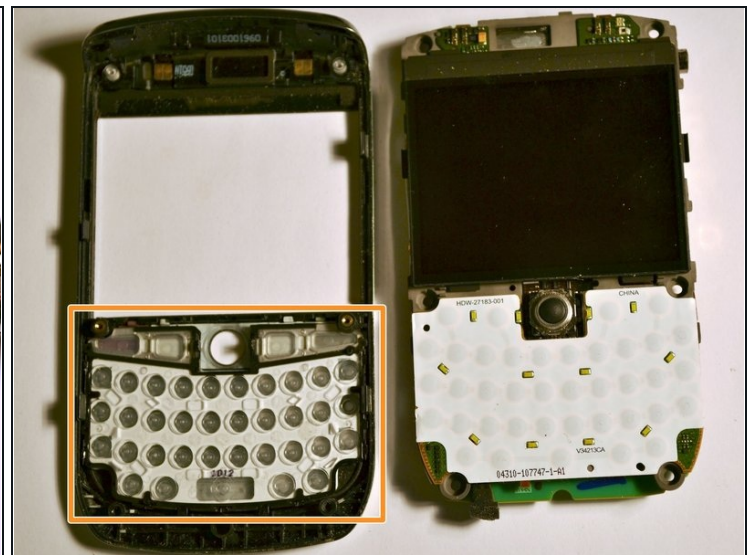
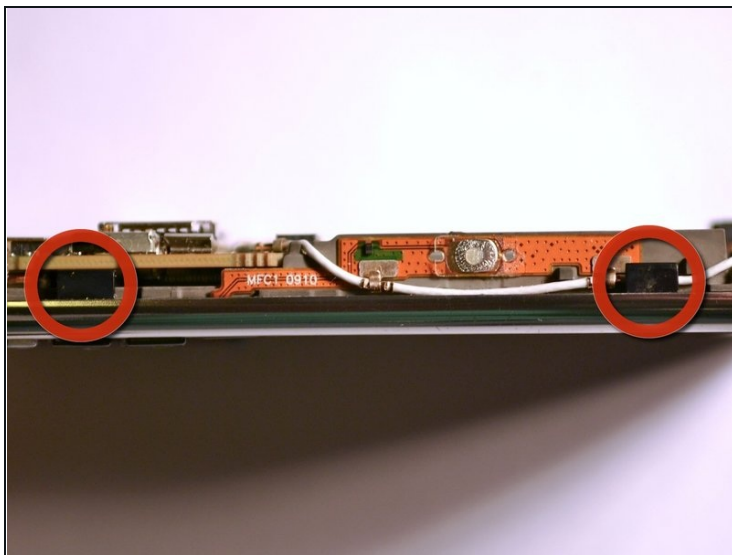
- Remove the six screws from the mid-frame of the device, using the T6 Torx Screwdriver.
- ☑ Set the screws aside once they've been removed.

Step 5



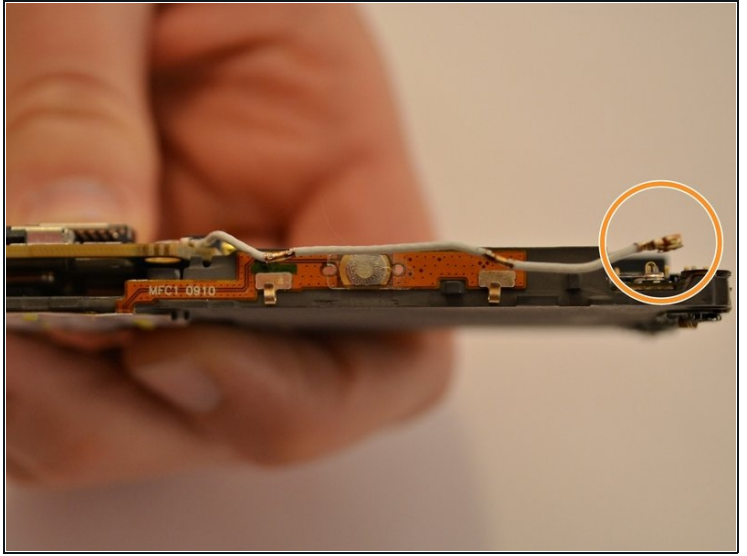
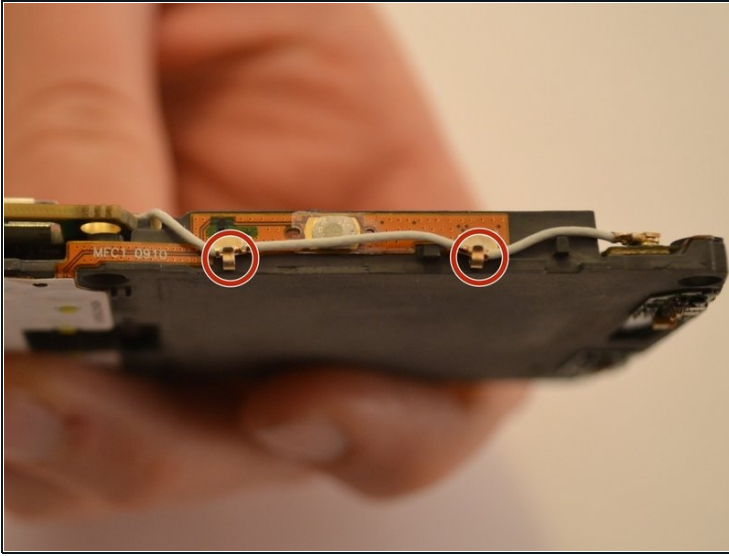
- Gently remove the mid-frame from the phone, exposing the motherboard.
- This is the motherboard.

Step 6



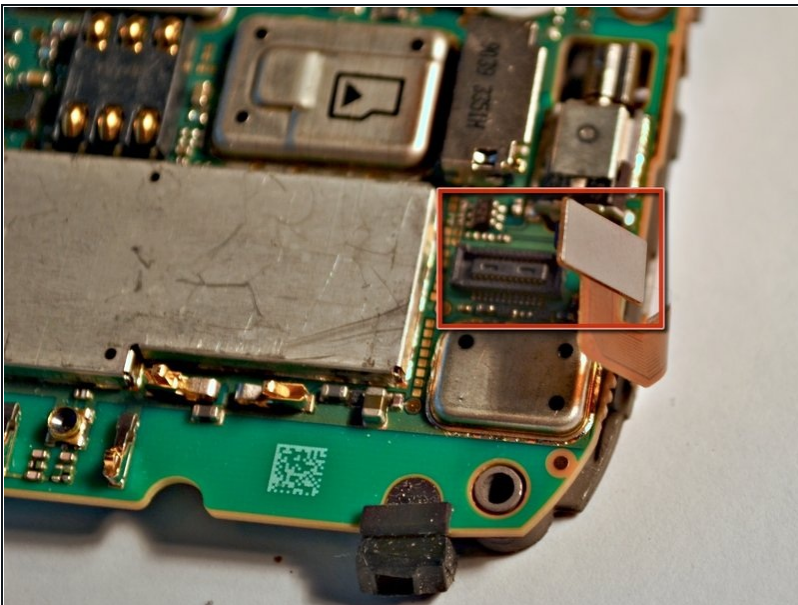
- Gently pull back the plastic tabs that secure the motherboard to the case.
 - Slowly pull the tabs, working your way around the case, until they are lifted and the motherboard is free.
 - Remove the motherboard.
- i* The keypad and navigation ball may become loose and fall off the motherboard.

Step 7



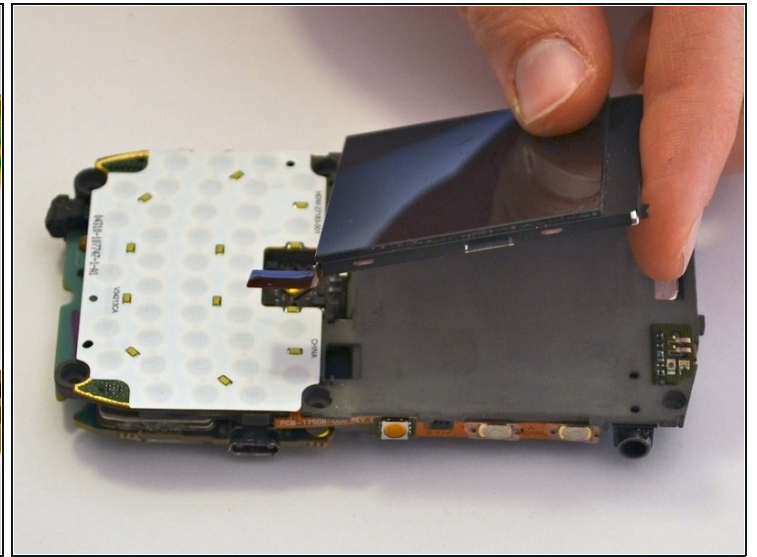
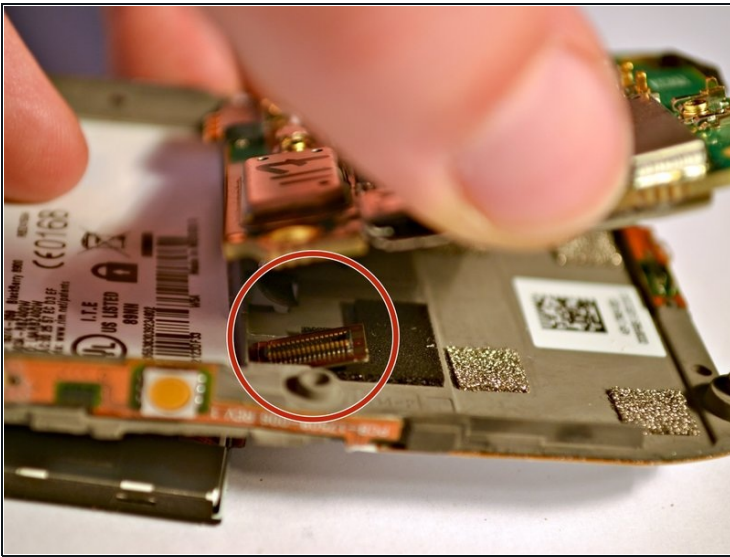
- Carefully detach the antenna from the two clips on the side of the motherboard.
- Disconnect the antenna from the motherboard in the same manner.

Step 8



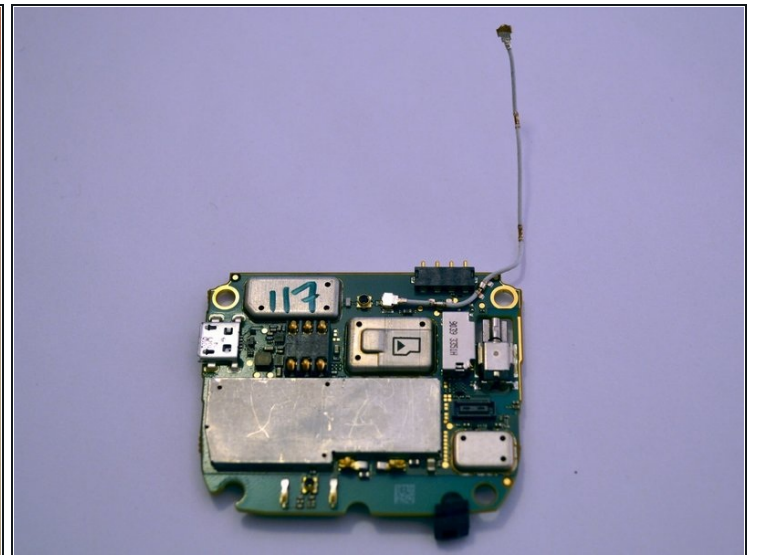
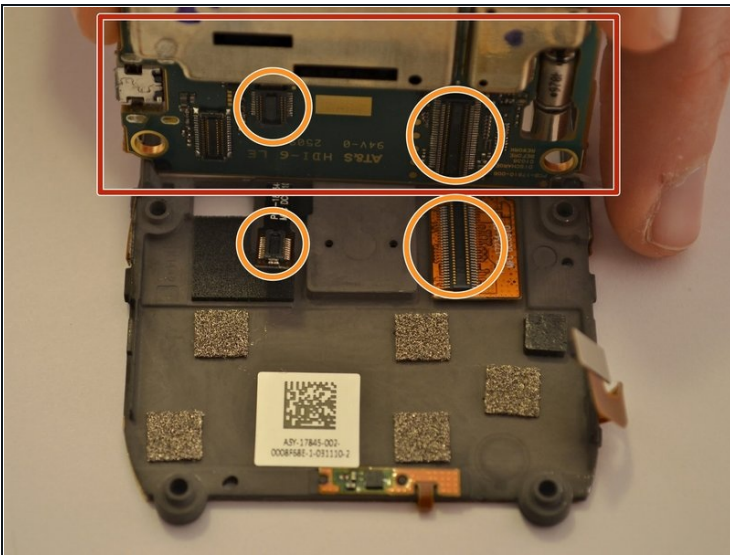
- Carefully disconnect the ribbon cable located on the bottom right of the motherboard.

Step 9



- Locate the chip underneath the screen.
- Gently remove the screen, without applying too much pressure, taking care not to damage it.

Step 10



- Lift up the motherboard from the bottom edge to reveal the ribbon cables.
- Carefully disconnect the two ribbon cables connecting the motherboard to the display on either side.
- Remove the motherboard and place off to the side.

To reassemble your device, follow these instructions in reverse order.