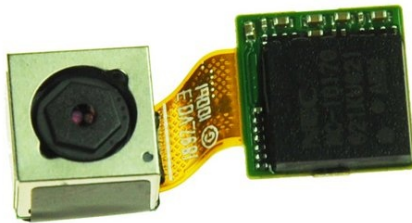




# Samsung Captivate Camera Assembly Replacement

The camera assembly is susceptible to various...

Written By: Drew Bentz



## INTRODUCTION

The camera assembly is susceptible to various environmental forces such as moisture, vibration, and shock. Replacing this part is easy.

---

### TOOLS:

Phillips #000 Screwdriver (1)

Spudger (1)

---

### Step 1 — Battery



- Remove the back cover by pressing on the bottom section of the phone and sliding the bottom piece downward.
- Lift up the back cover.

## Step 2



- Place your finger on the bottom of the battery and lift to remove.

## Step 3



- Replace the old battery with the new one.

## Step 4 — Rear Case



- Insert the spudger underneath the bottom section of the phone.
- Gently lift and push the spudger to slide the bottom section down to reveal two hidden screws.

## Step 5



- Remove the six 4.5mm #000 Phillips screws.

## Step 6



- Starting at a bottom corner, use the spudger to separate the rear case from the front display.
- Move the spudger towards the top on both sides. The plastic opening tool is easier to use for this step.

⚠ Be careful when detaching the top. Free each side, stopping short of the center of the cover. Apply backward pressure on both corners with a finger applying pressure on the center, and slide the whole back cover toward the bottom of the device. Note: forcing the cover can result in cracked plastic.

## Step 7



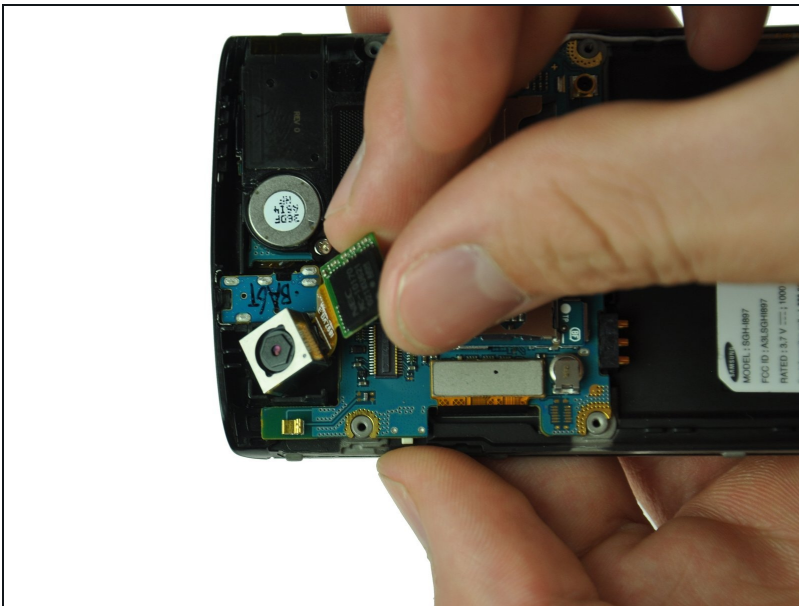
- Separate the rear case from the phone.

## Step 8 — Camera Assembly



- Use the spudger tool to pry up the chip labeled "NEC." This releases the chip.

## Step 9



- Gently lift the camera assembly out of the plastic housing.

To reassemble your device, follow these instructions in reverse order.