



TiVo Series 2 TCD24008A Power Supply Replacement

The power supply does not create power or energy. It receives alternating current (AC) from a wall outlet and converts it to direct current (DC) so that the TiVo devices can work.

Written By: Phil Jones



This document was generated on 2020-11-18 11:28:52 AM (MST).

INTRODUCTION

The power supply allows for the TiVo components to work. In the situation that it needs to be replaced, this guide will walk you through the installation of the power supply



TOOLS:

- [T9 Torx Screwdriver](#) (1)
 - [Tweezers](#) (1)
-

Step 1 — Cover



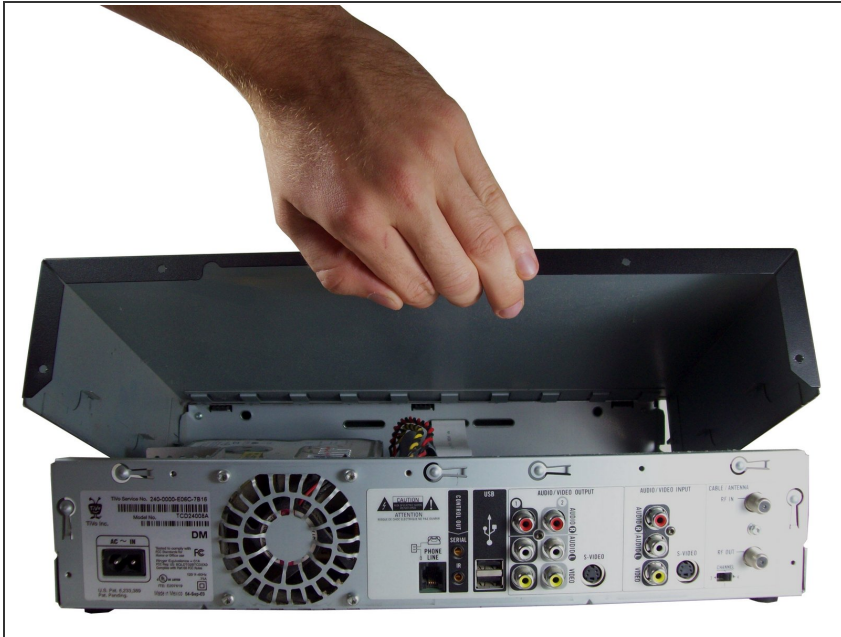
- Unscrew the five 0.31 inch T-9 screws on the back cover.

Step 2



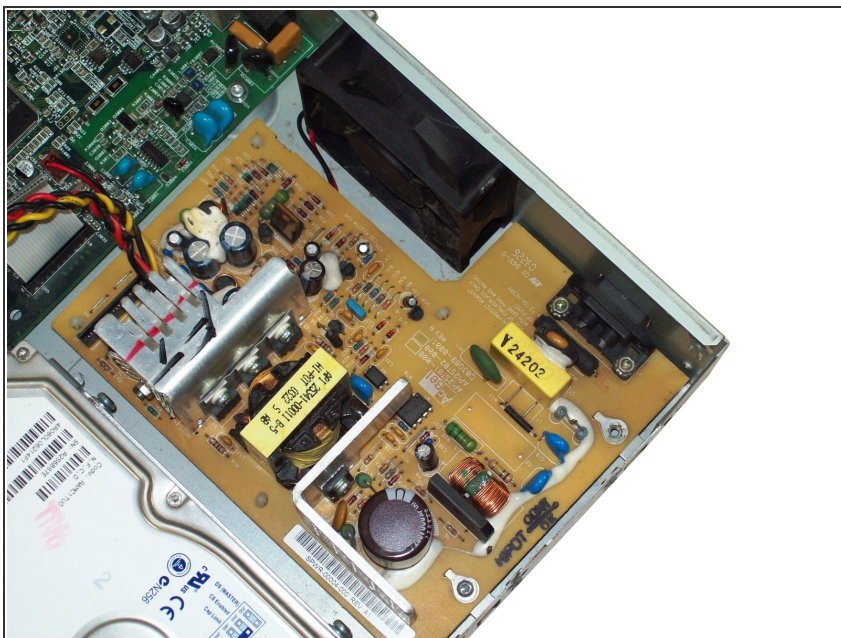
- Slide the cover towards the back until it is no longer under the front cover.

Step 3



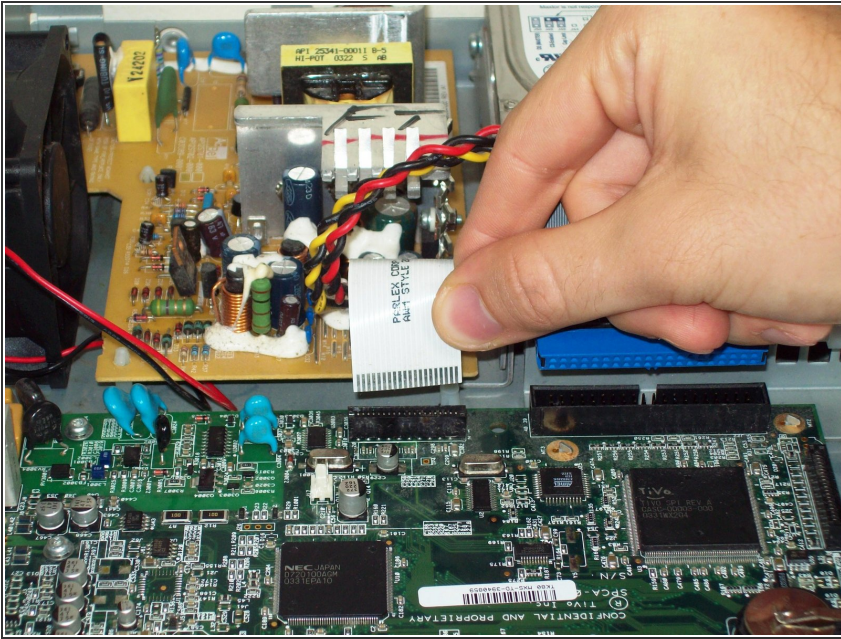
- Lift the cover up and off the device.

Step 4 — Power Supply



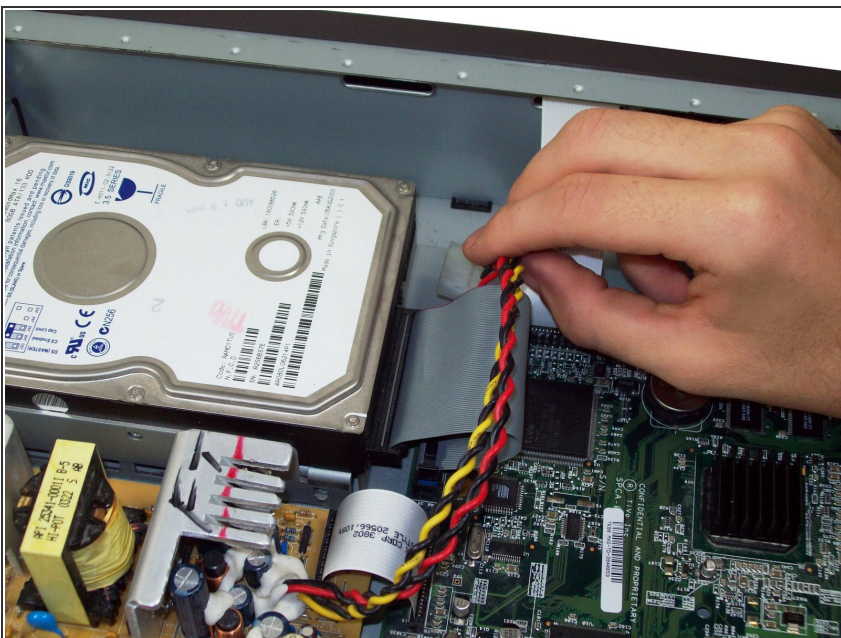
- Locate the power supply.

Step 5



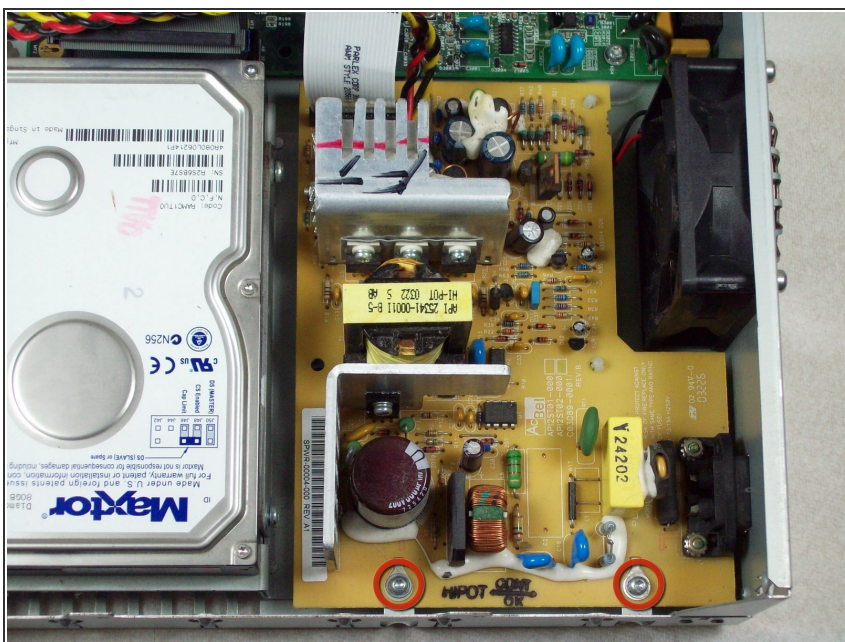
- Remove the belt connecting the power supply to the motherboard by pulling it out.

Step 6



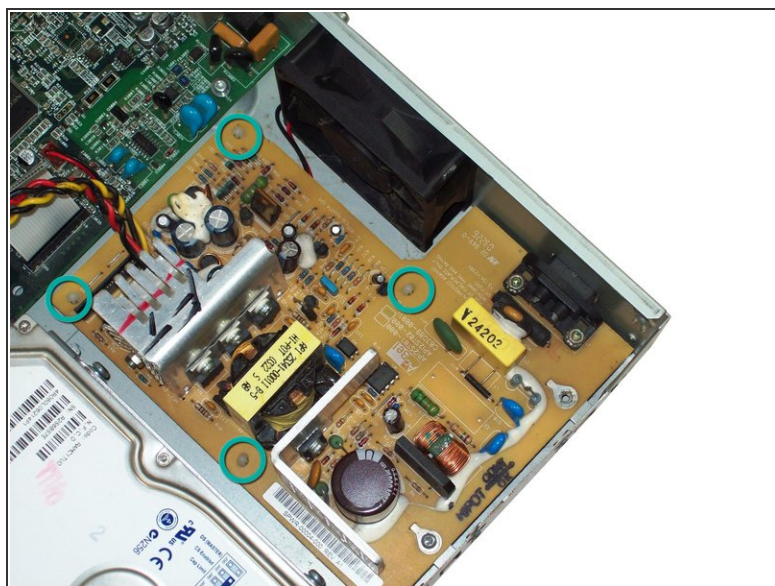
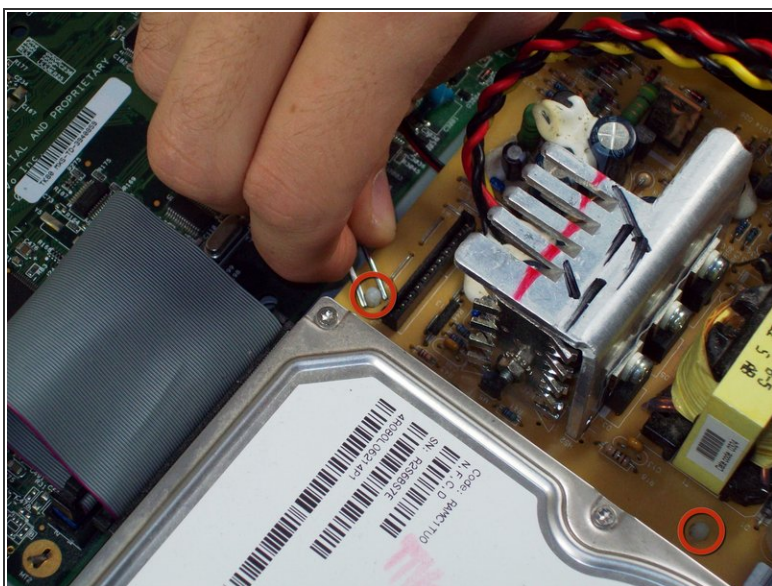
- Remove the red, yellow, and black cable connecting the power supply to the hard drive.

Step 7



- Remove the two 0.31 inch T-9 screws from the power supply.

Step 8



- Pinch the plastic plugs and lift the power supply up to detach from plugs.
- All 4 plugs must be detached to remove power supply.

To reassemble your device, follow these instructions in reverse order.