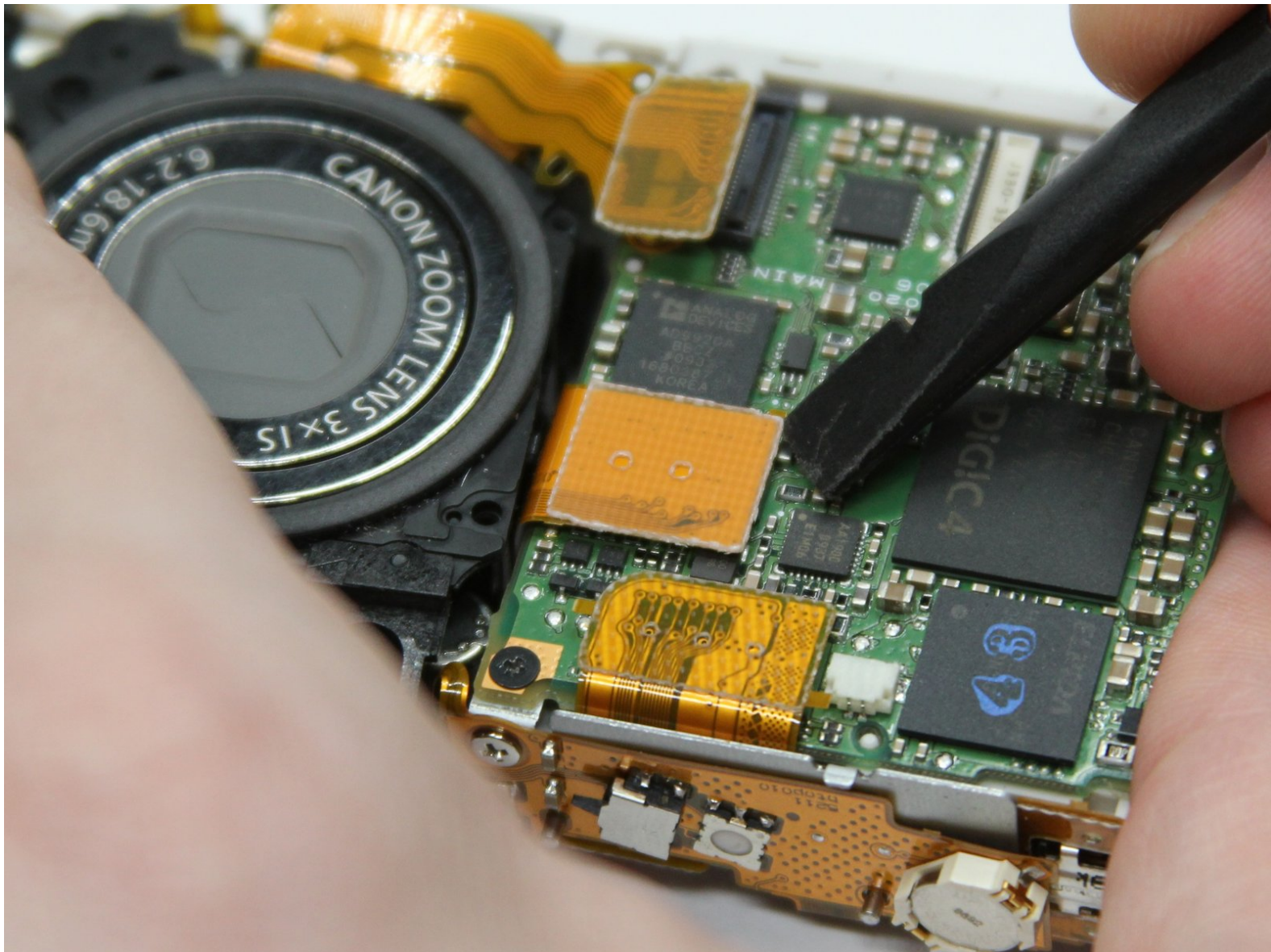




# Canon PowerShot SD1200 IS Lens Assembly Replacement

This guide will walk you through removing the lens assembly.

Written By: Jeff Casper



---

## INTRODUCTION

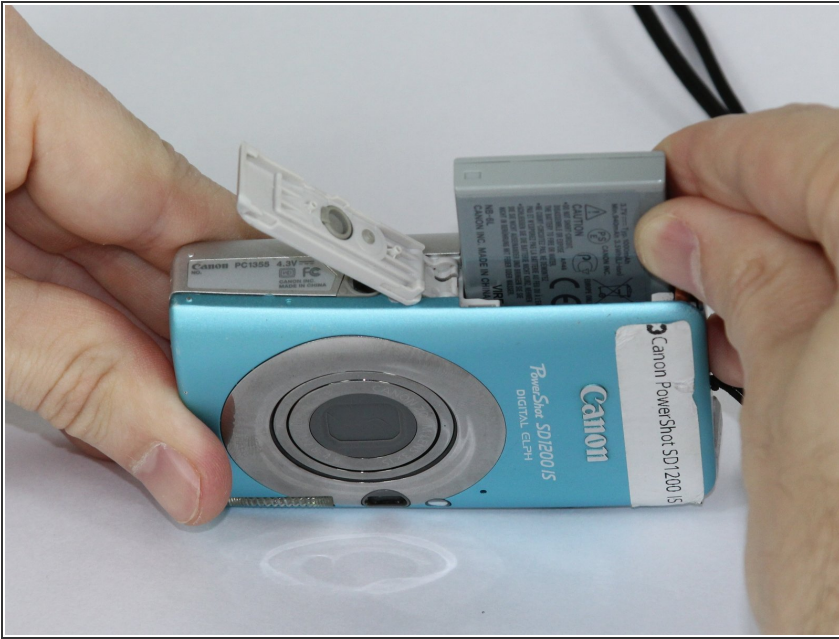
Damaging the lens on your camera can be a death sentence. But never fear, if you have an old compatible Canon camera you can cannibalize, or find a good part elsewhere, restoring your camera to working order is relatively simple.



### TOOLS:

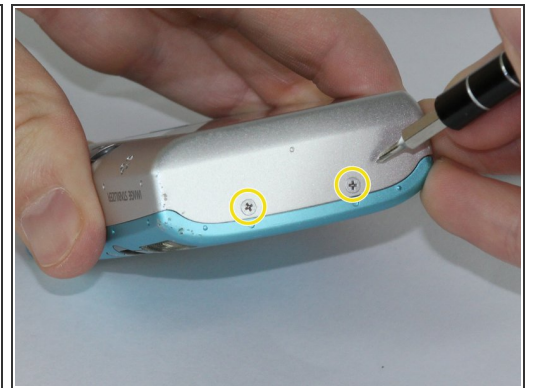
- [Phillips #00 Screwdriver](#) (1)
  - [Tweezers](#) (1)
  - [Spudger](#) (1)
-

## Step 1 — Front and Rear Covers



- Remove the battery.

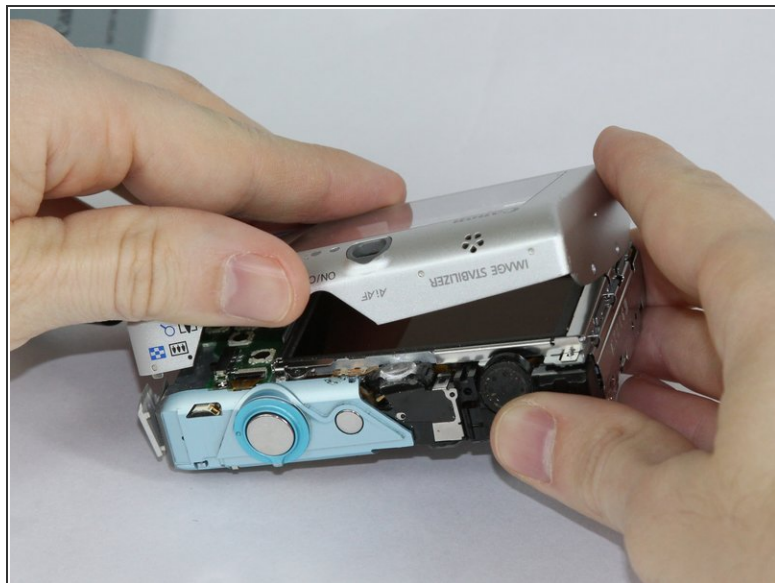
## Step 2



- Remove the two screws from the side of the camera casing with the strap. (4mm Phillips 00)
- Remove the two screws from the bottom of the camera. (4mm Phillips 00)
- Remove the two screws from the right side of the camera opposite the strap. (2mm Phillips 00)

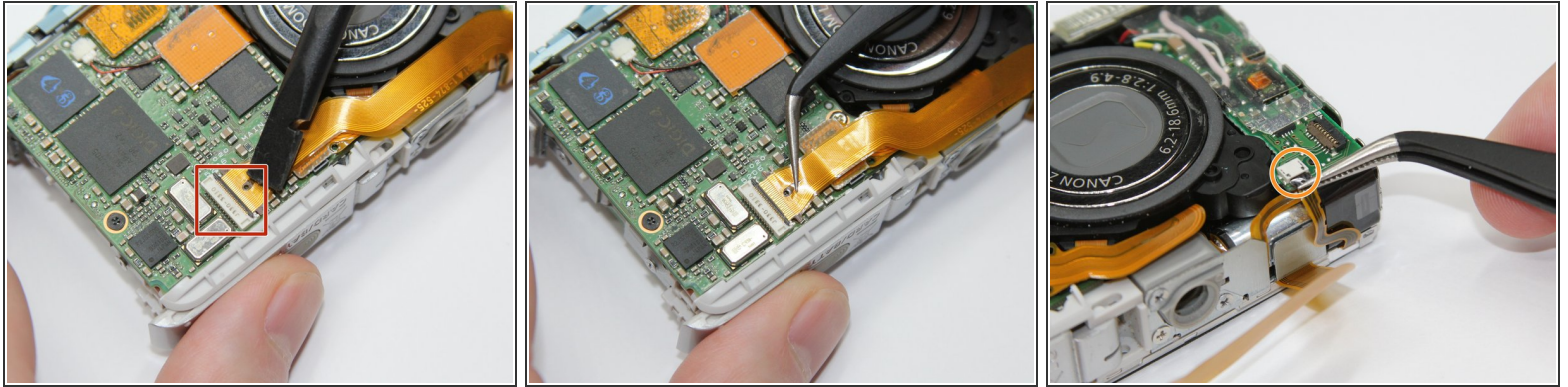


## Step 3



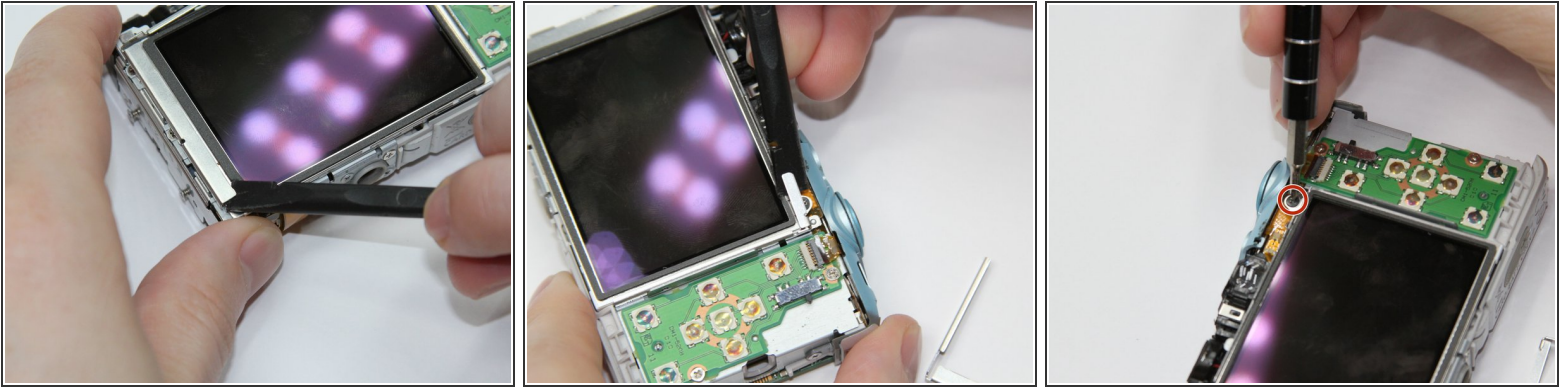
- Pull off the front cover.
- ⓘ If the top of the cover sticks, use gentle downward pressure on the retention clips above the lens to release.
- Remove the back cover.

## Step 4 — LCD



- Use the spudger to lift the retaining flap on the **Zero Insertion Force (ZIF)** tab securing the thick ribbon cable.
  - Slide out the ribbon cable using fingers or tweezers.
- ⚠ Be sure you are prying up on the hinged retaining flap, not the connector.
- Using tweezers, disconnect the small ribbon cable below the flash assembly from the **No Fuss Connector** by simply pulling the ribbon cable straight out.

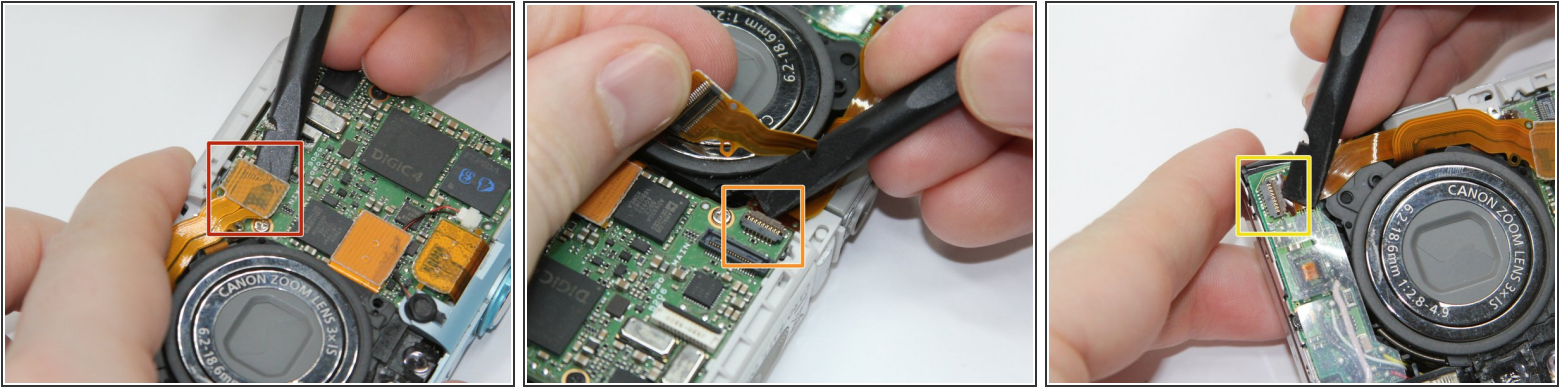
## Step 5



- Remove the L shaped brackets from the left and right side of the LCD screen with the spudger tool.
- ⓘ The Brackets have tabs that need to be pried up.
- Remove the screw below the shutter button. (2.5mm Phillips 00)
- Holding the sides of the LCD screen, lift the screen up and away to remove.

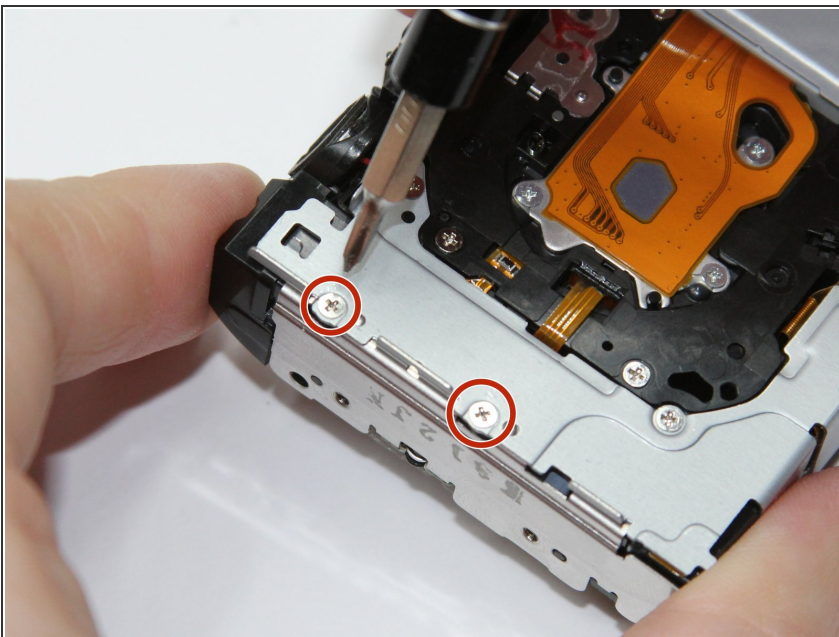


## Step 6 — Flash Assembly



- Use the spudger to pry up each side of the lens assembly **Flat-Topped Connector** at the bottom of the motherboard.
  - Holding back the lens assembly ribbon cable, use the spudger to lift the **Zero Insertion Force (ZIF)** connector tab . Slide out the ribbon cable.
- ⚠ Be sure you are prying up on the hinged retaining flap, not the connector itself.
- Use the spudger to lift the **Zero Insertion Force (ZIF)** connector tab located on the flash unit. Remove the ribbon cable.

## Step 7



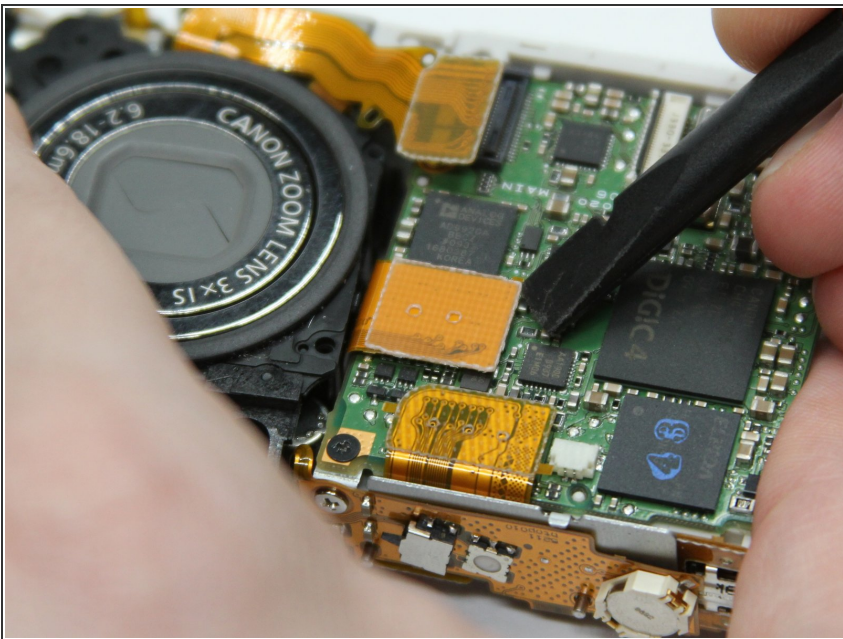
- Remove the two screws (2 mm Phillips 00) along the back edge of the camera frame directly behind the flash assembly.

## Step 8



- Lift out the flash assembly.

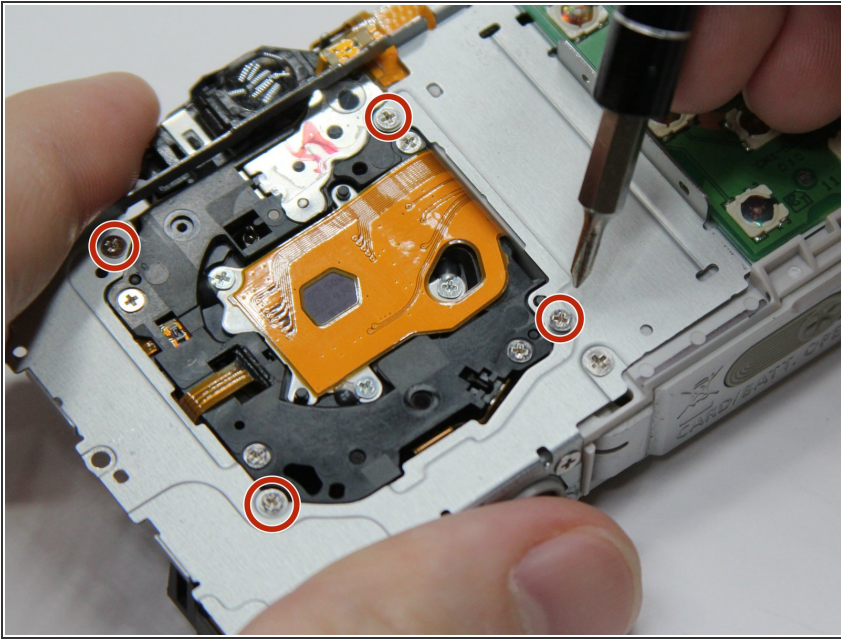
## Step 9 — Lens Assembly



- Use the spudger to gently pry up both sides of the flat-topped connector, then lift the cable directly up out of its socket.

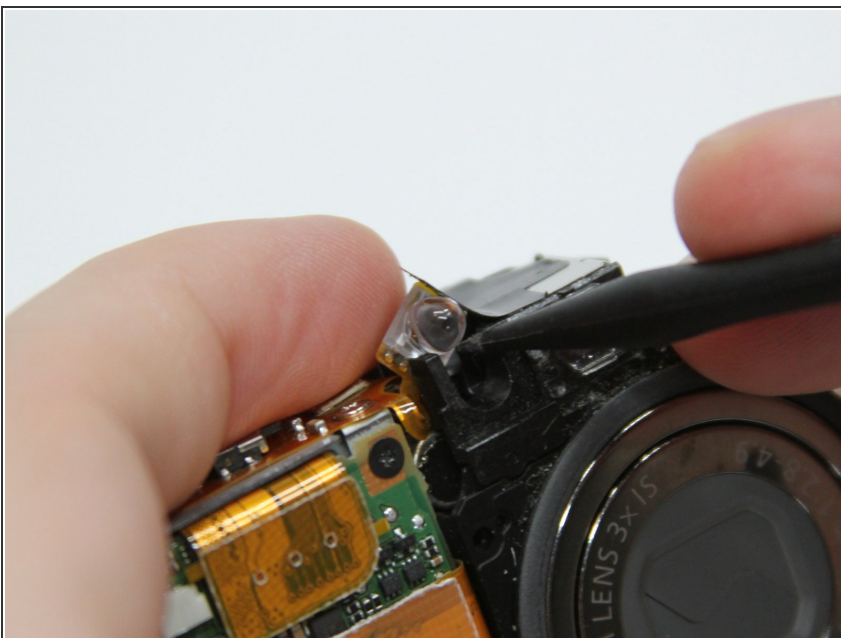


## Step 10



- Remove the 4 corner screws on the back of the camera in silver metal frame surrounding the back of the lens assembly (2.5 mm Phillips 00) .

## Step 11



- Use the spudger to gently lift out the LED at the top of the lens assembly.

## Step 12



- Remove the lens assembly.

To reassemble your device, follow these instructions in reverse order.