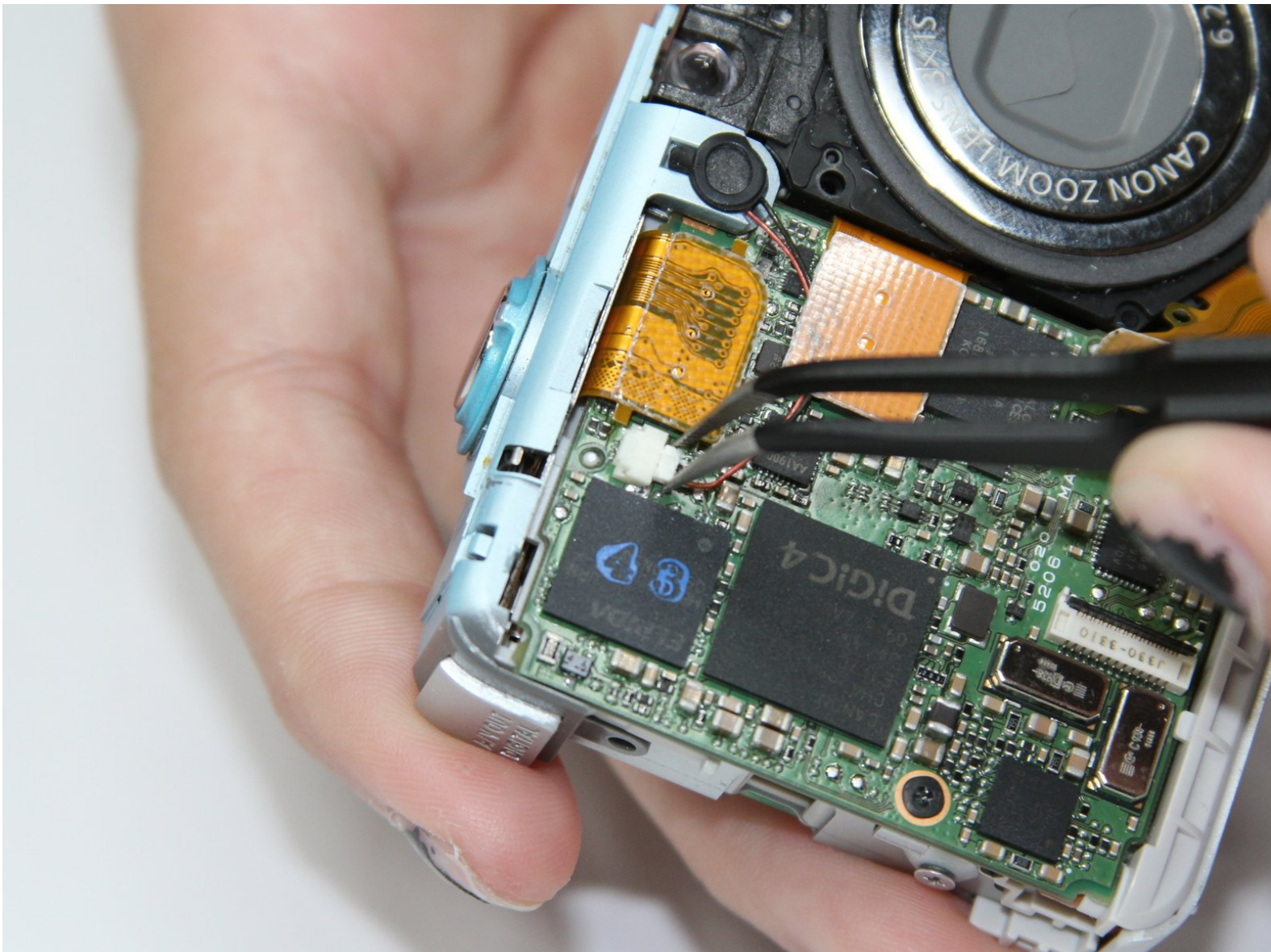




# Canon PowerShot SD1200 IS Motherboard

Accessing the motherboard of the Canon PowerShot SD1200 IS.

Written By: Jeff Casper



# INTRODUCTION

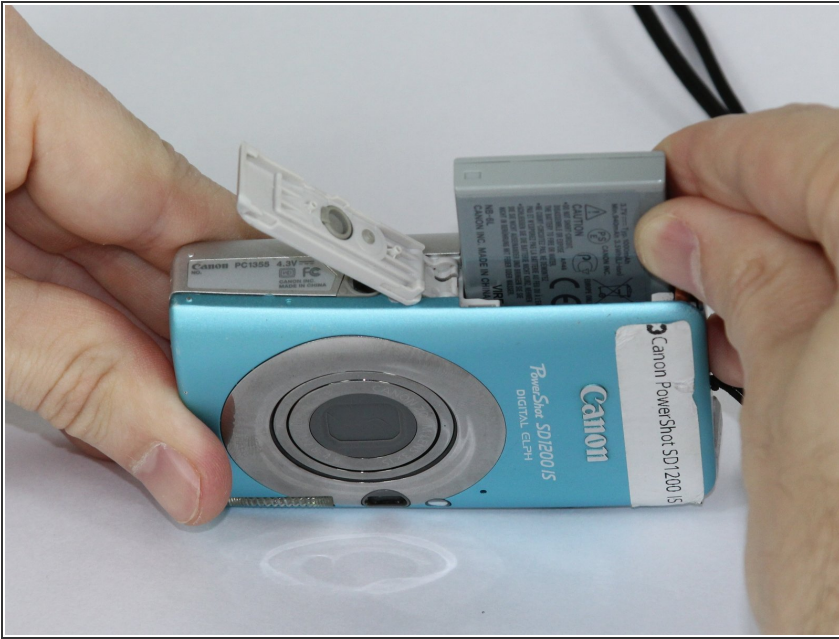
Use this guide to access the motherboard to reseal connections on the motherboard or to remove the motherboard for replacement.



## TOOLS:

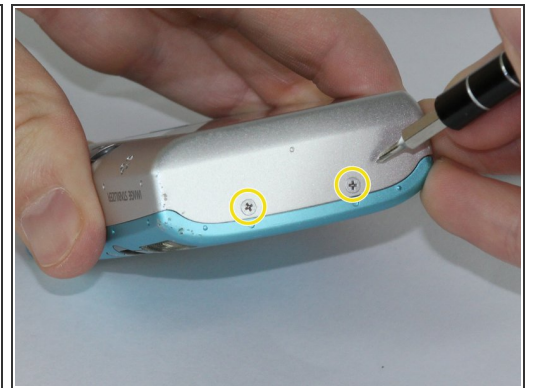
- [Phillips #00 Screwdriver](#) (1)
  - [Tweezers](#) (1)
  - [Spudger](#) (1)
-

## Step 1 — Front and Rear Covers



- Remove the battery.

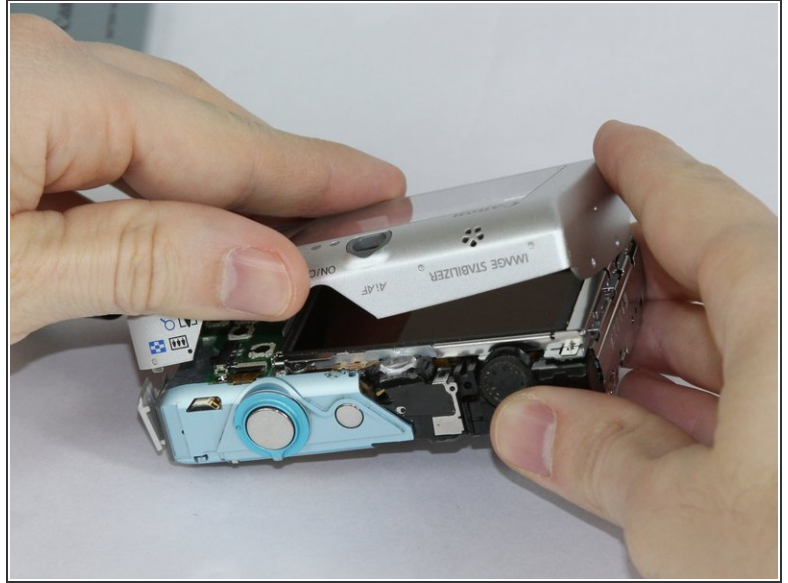
## Step 2



- Remove the two screws from the side of the camera casing with the strap. (4mm Phillips 00)
- Remove the two screws from the bottom of the camera. (4mm Phillips 00)
- Remove the two screws from the right side of the camera opposite the strap. (2mm Phillips 00)

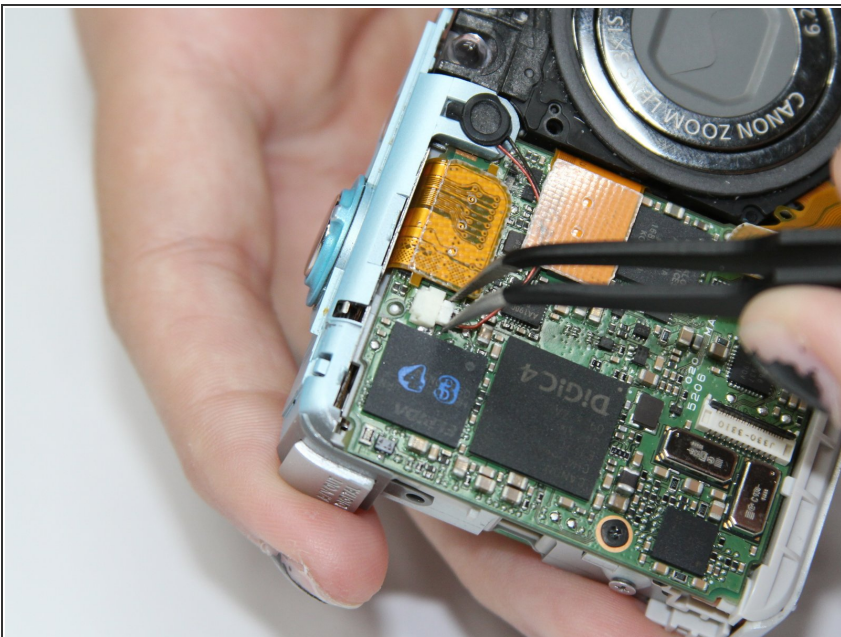


### Step 3



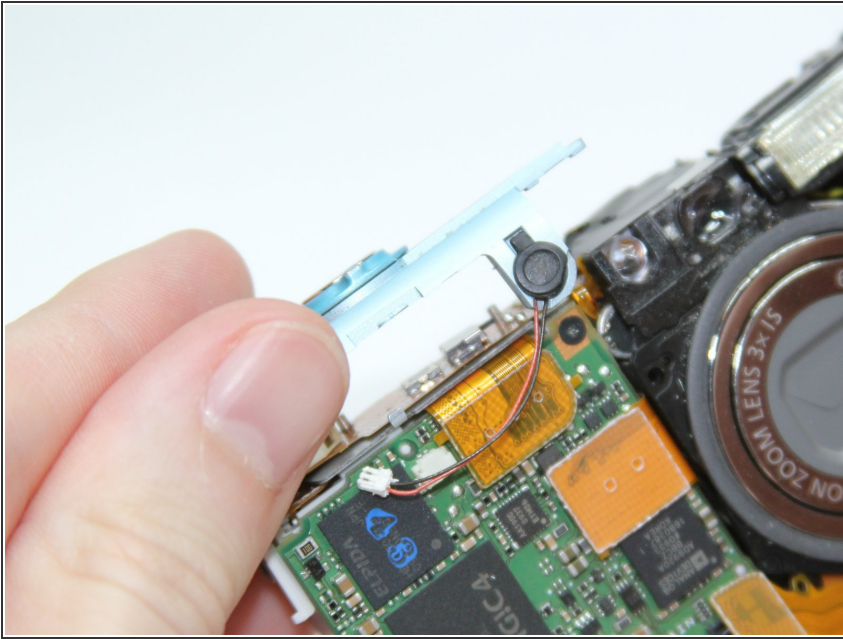
- Pull off the front cover.
- ⓘ If the top of the cover sticks, use gentle downward pressure on the retention clips above the lens to release.
- Remove the back cover.

### Step 4 — Motherboard



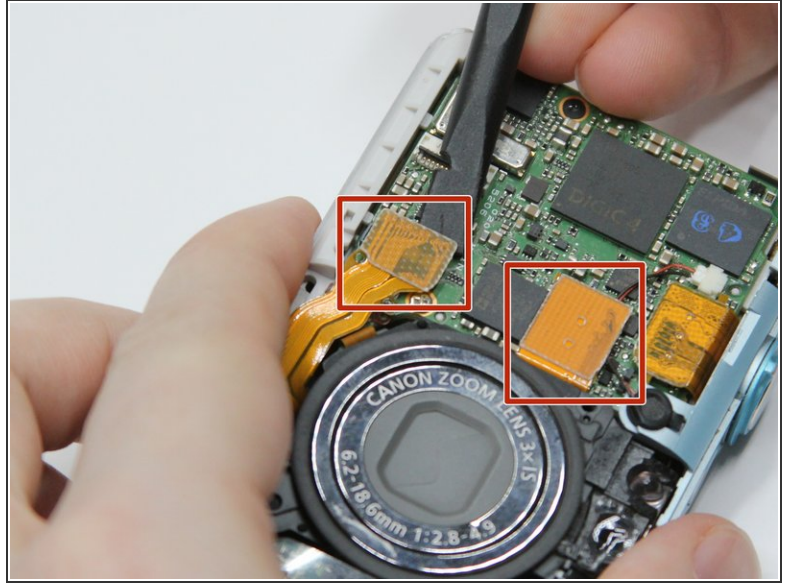
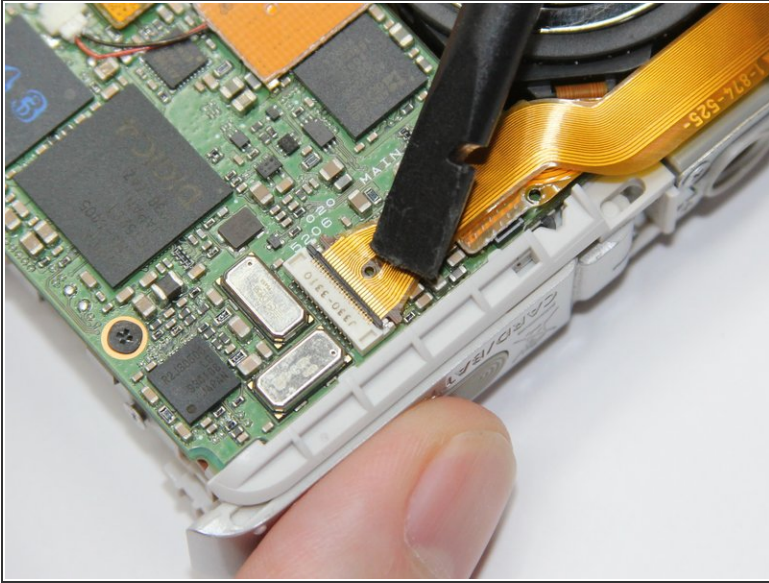
- Remove the microphone connector by gripping it with the tool and gently, with a wiggling motion, pull it out.
- ⚠ Pull the connector straight out by the white connector. Pulling on the wires will damage them.

## Step 5



- Lift off the mechanical shutter button assembly.

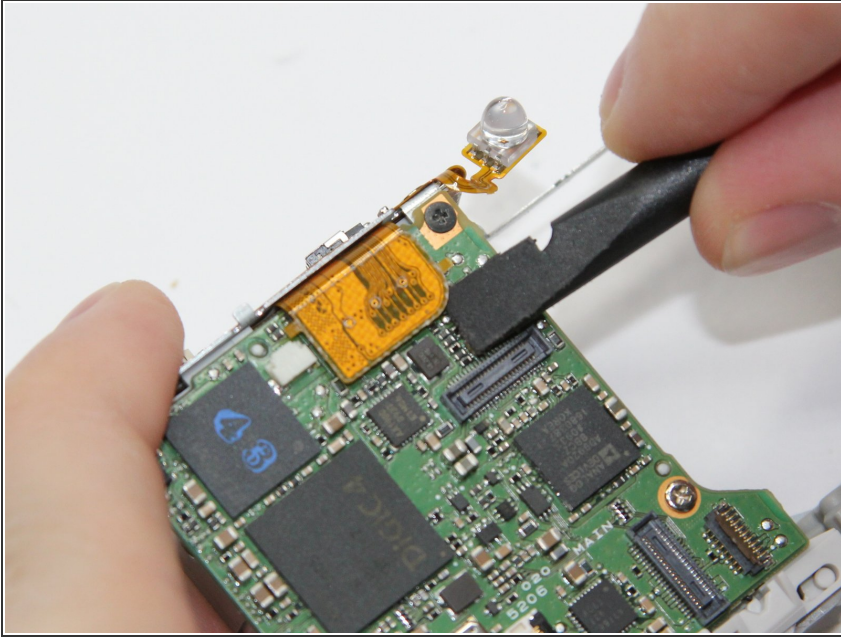
## Step 6



- Use the spudger to lift the tab on the **Zero Insertion Force (ZIF)** connector located at the bottom of the motherboard.
- ⚠ Be sure you are prying up on the hinged retaining flap, not the connector itself.
- Slide out the ribbon cable.
- Use the spudger to pry up each side of the **Flat-Topped Connectors**

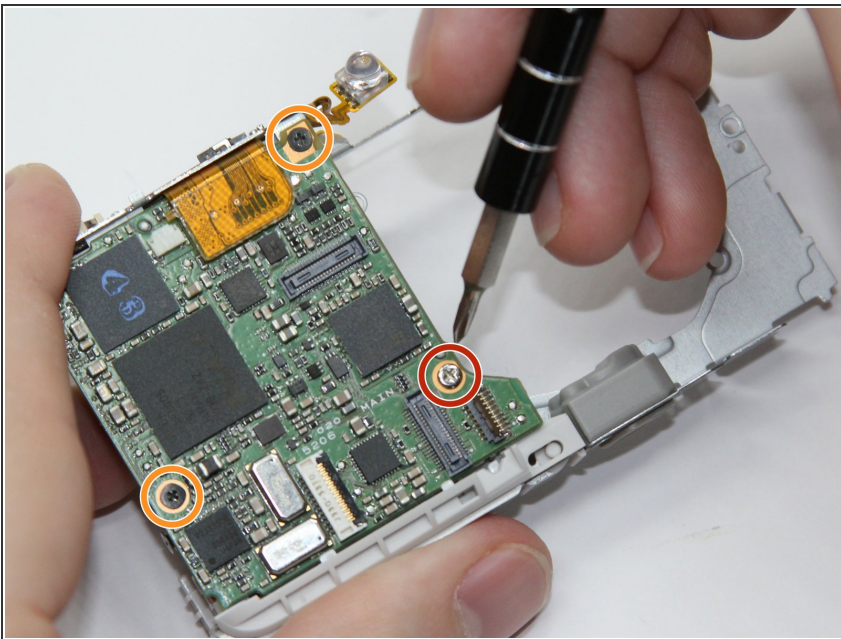


## Step 7



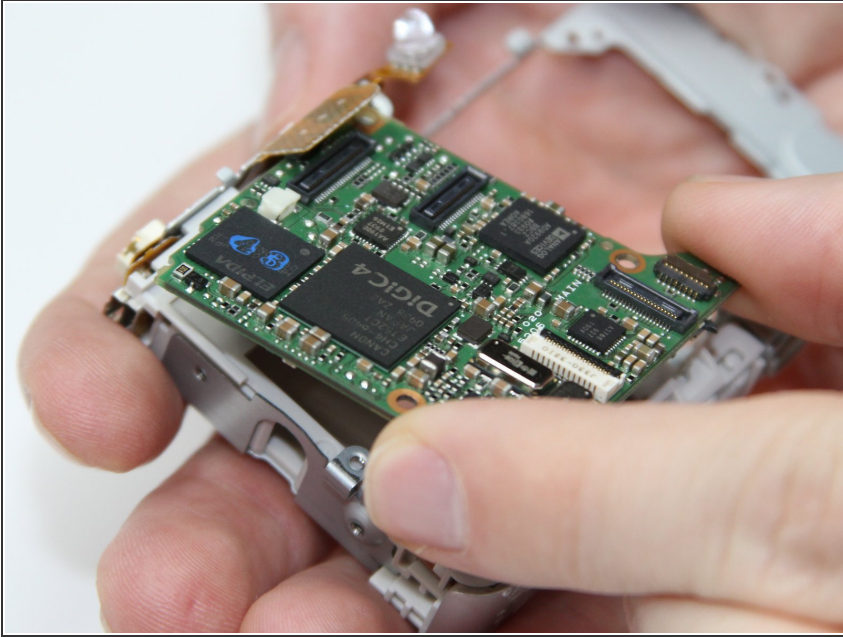
- Remove the press fit ribbon cable by prying upward with spudger tool.
- ⓘ It is not necessary to remove the Lens or Flash Assemblies to remove the motherboard.

## Step 8



- Remove the bottom right screw from the motherboard. (4mm Phillips 00)
- Remove top and lower left black screws from the motherboard. (2.5mm Phillips 00)

## Step 9



- Lift out the motherboard.

To reassemble your device, follow these instructions in reverse order.