



# Palm Vx Screen Replacement

In this repair guide it will be described how to replace a broken screen on a Palm Vx organizer.

Written By: Will Doornink



---

## INTRODUCTION

In this repair guide it will be described how to replace a broken screen on a Palm Vx organizer.

---

### TOOLS:

- [Heat Gun](#) (1)
  - [Tweezers](#) (1)
  - [iFixit Opening Tools](#) (1)
-

## Step 1 — Screen



- Take protective cover off of organizer.
- ⓘ Note: cover slides off like pointer pen.

## Step 2



- Lay device face down on surface.

### Step 3



- Heat each side for 30 seconds individually.
- ⓘ Note: Be aware not to heat the screen, or any part to the point of damage.
- ⚠ Caution: Heating the metal case may cause burns.

### Step 4

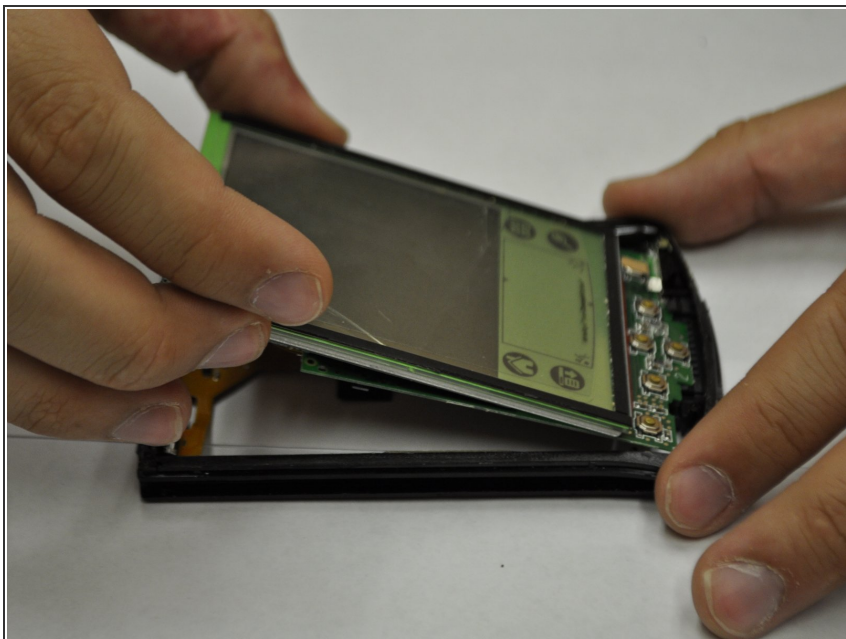


- Pry off each side individually using a plastic pry bar.
- ⓘ Note: Using a plastic pry bar will keep from damaging the case. DO NOT use a metal screwdriver or similar tool.
- Repeat for front and back of PDA.
- ⓘ Note: Do not lose the green power button that may fall out.

This document was generated on 2020-11-27 12:31:13 PM (MST).

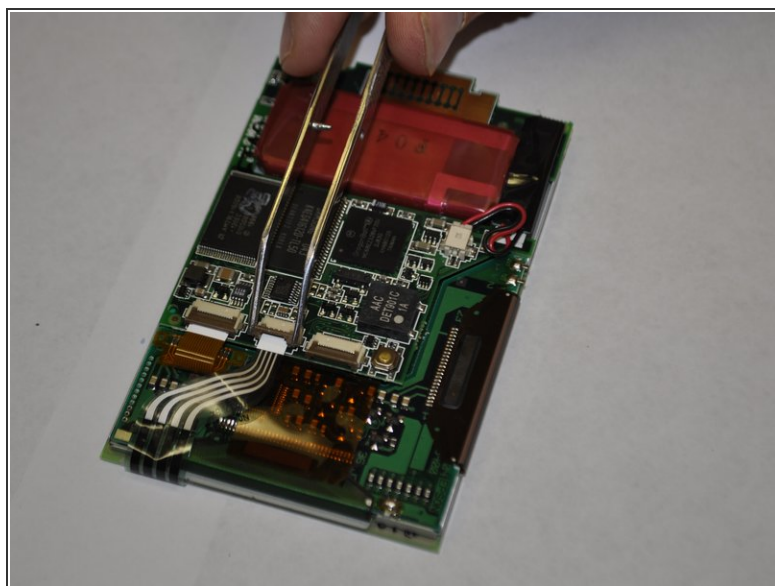
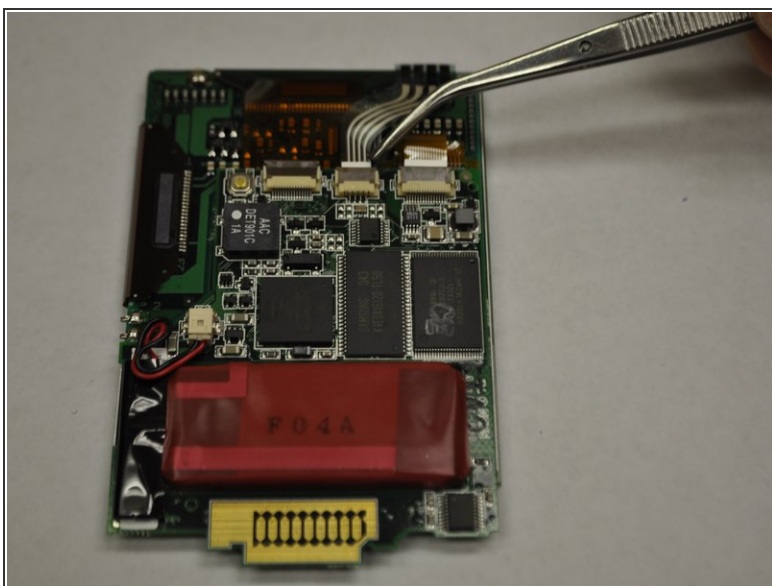


## Step 5



- Remove the screen from the plastic casing.

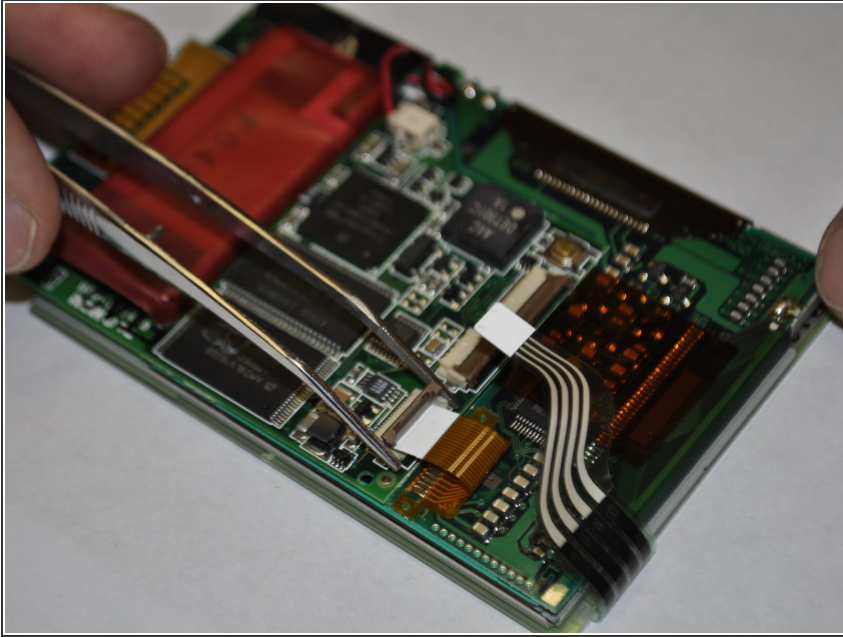
## Step 6



- In order to separate the screen from the motherboard you must disconnect the ribbon attached to the screen.
- To do this, using tweezers, flip up the cable clamp that is connecting the ribbon to the screen.
- Once the clamp is up you can use the tweezers to gently detach the ribbon.

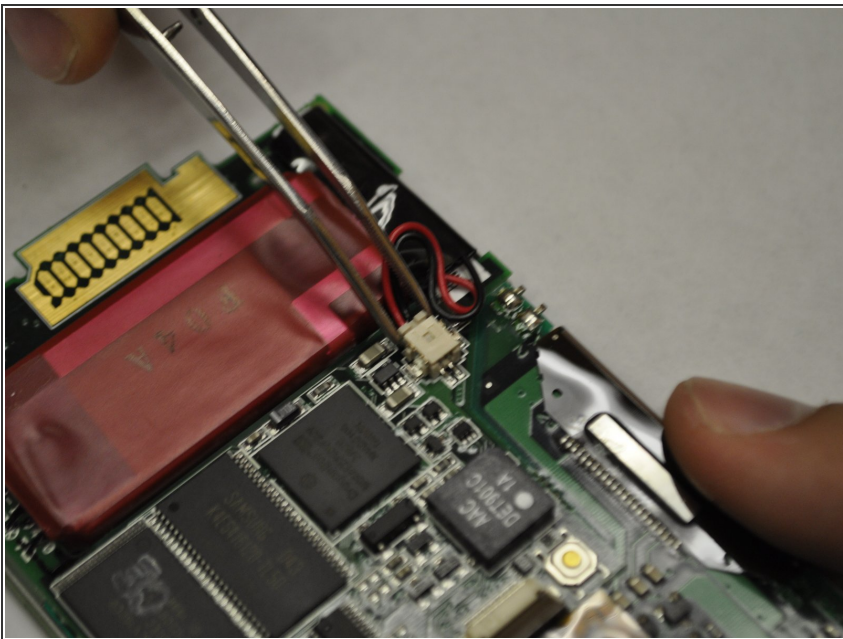
This document was generated on 2020-11-27 12:31:13 PM (MST).

## Step 7




- Now you must flip up the adjacent clamp as well, using tweezers like before.
- After the clamp is flipped you can gently remove the second ribbon with tweezers.

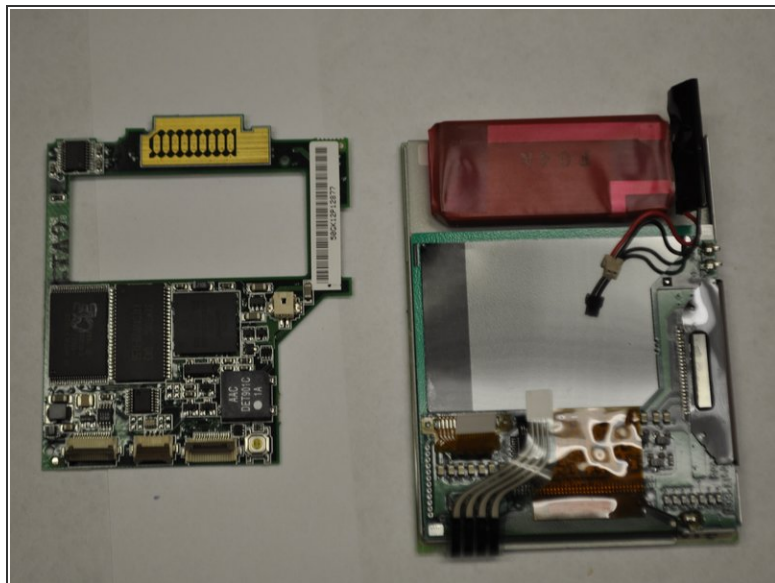
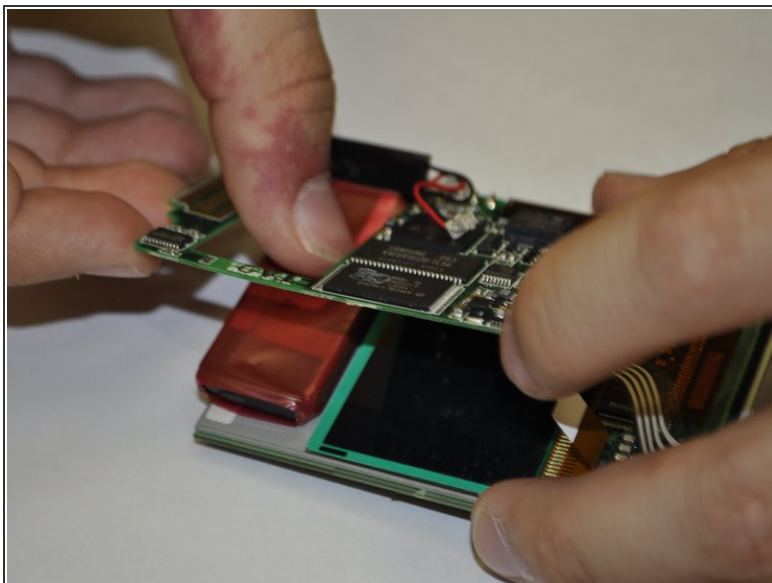
## Step 8



- Before removing the screen you must detach one more wire, the battery connector.
- Using the tweezers, squeeze the connector attached to the wire and gently pull.

 Do not pull on the wire.

## Step 9



- Now that both ribbons and the wire are disconnected, you can apply a downward pressure to the battery. You will have to carefully rotate the frame so that the battery can go through.

To reassemble your device, follow these instructions in reverse order.