



Epson Stylus Photo 1400 Printhead Replacement

This guide shows how to replace a printhead...

Written By: Larry Huang



INTRODUCTION

This guide shows how to replace a printhead. Consistently poor print quality even after printing and replacing ink might be caused by a faulty printhead. This process requires the knowledge of how to use basic tools.



TOOLS:

[iFixit Opening Tool](#) (1)
[6-in-1 Screwdriver](#) (1)
[Phillips #2 Screwdriver](#) (1)
[Tweezers](#) (1)



PARTS:

[Printhead](#) (1)

Step 1 — Housing



- Turn off the printer.
- Disconnect all data connections coming into the printer such as USB, networkd cables, firewire, etc. as well as removing the power cord.

Step 2



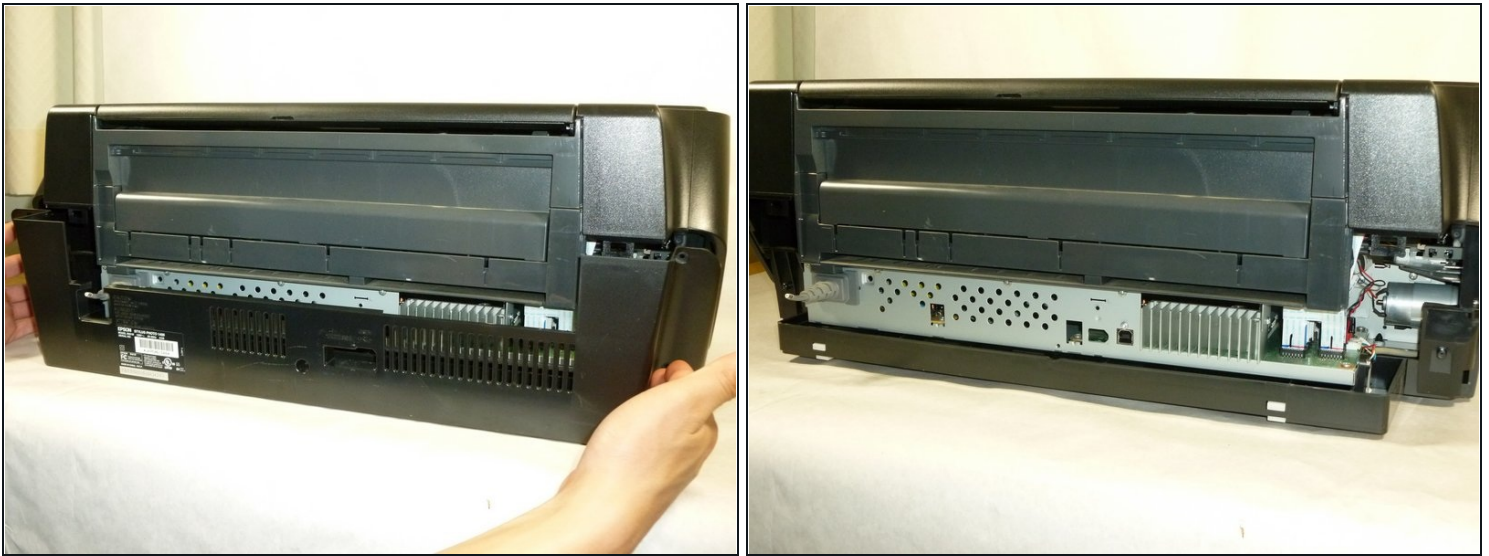
- Locate the IEEE cover in the back.
- Gently slide the cover to the right to unlatch, then pull to remove it.

Step 3



- Using a Phillips #2 screwdriver, remove the four 10 mm screws shown.
- Remove the 6 mm screw that holds the rear housing in place.

Step 4



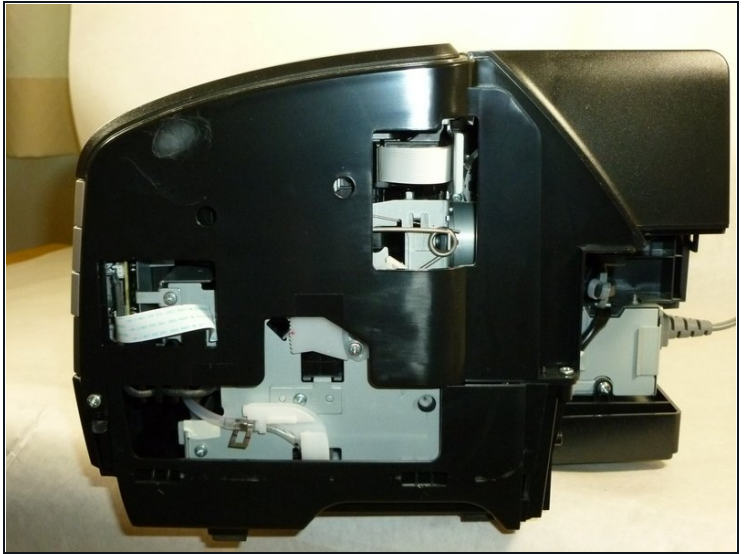
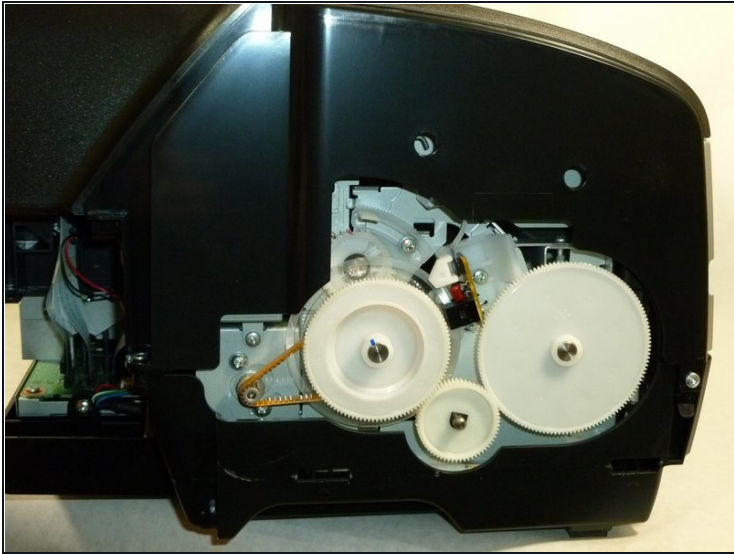
- Remove the rear housing by pulling it backwards.

Step 5



- Insert a plastic opening tool into the cutouts of the lower housing.
- Release the two tabs of the side housing by lifting the tool in an upward motion.
- Remove the side housing by pulling it outwards.

Step 6



① Both side housings are attached by the same type of mechanism.

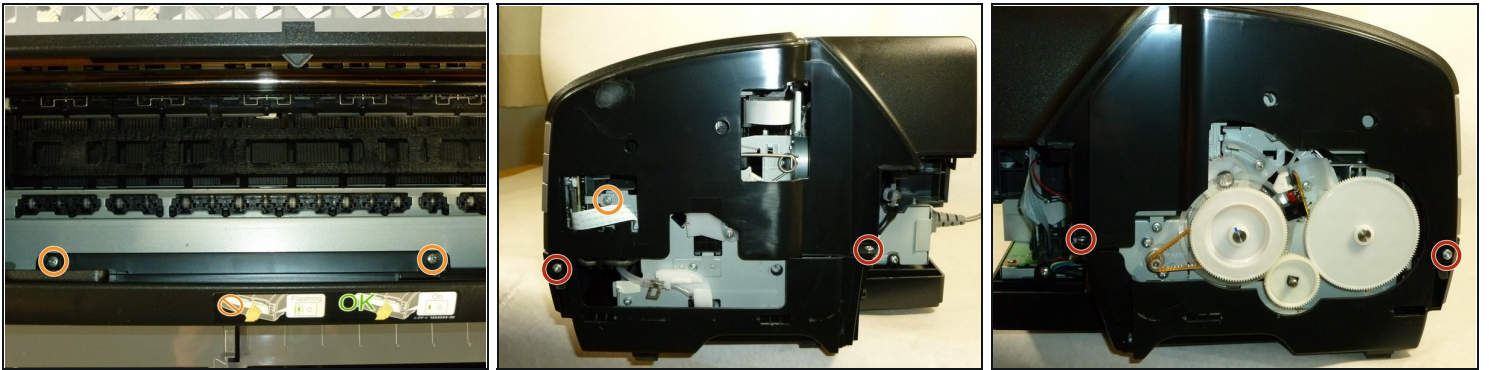
- Using the same method, remove the other side housing.

Step 7



- Lift the paper support.
- Open the printer cover and front cover.

Step 8



- Remove the four 10 mm Phillips #2 screws from the sides of the printer.
- Remove the three 6 mm Phillips #2 screws.

Step 9



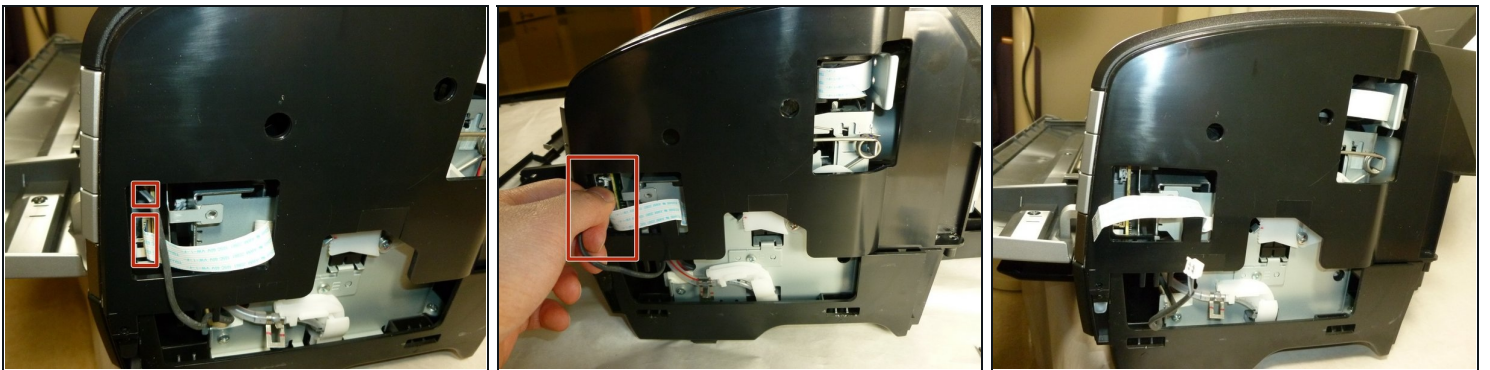
- Detach the tabs from the pins on each side by pulling it outwards.

Step 10



- Remove the two 10 mm Phillips #2 screws on the front of the printer.

Step 11



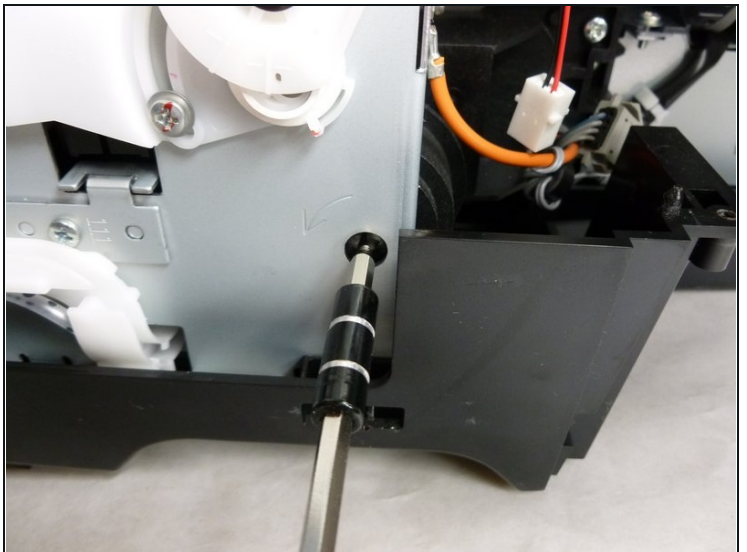
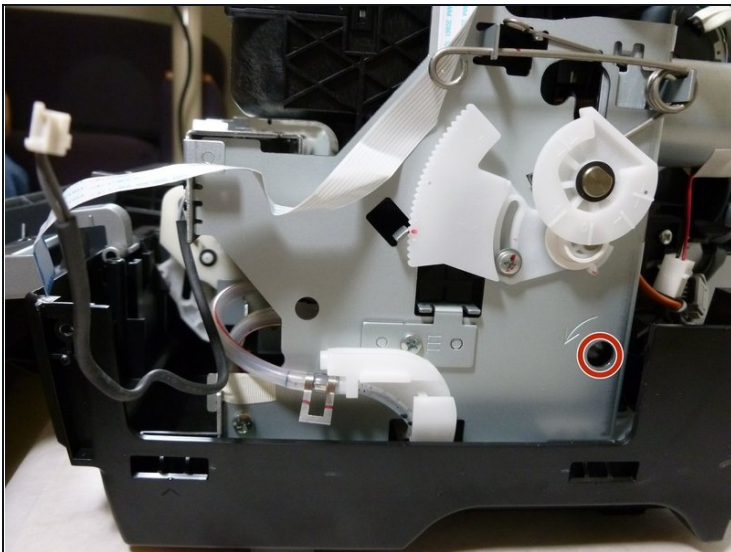
- Disconnect the two cables on the side by carefully pulling it outwards.
- ① You may need to gently rock the two cables up and down while pulling.

Step 12



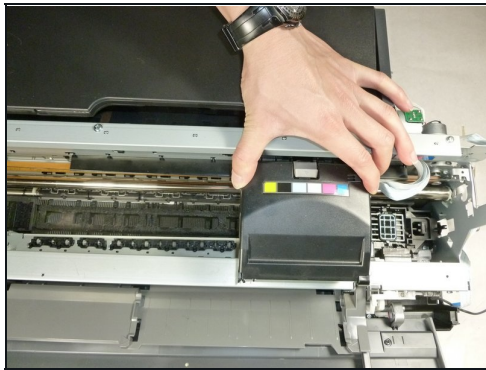
- Remove the upper housing by lifting it upwards.
- ① It's easier to lift the housing by gripping it from the bottom.

Step 13 — Printhead



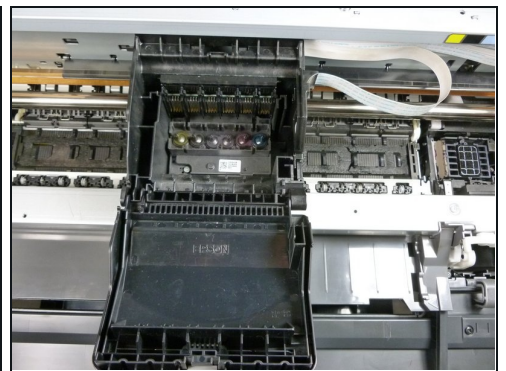
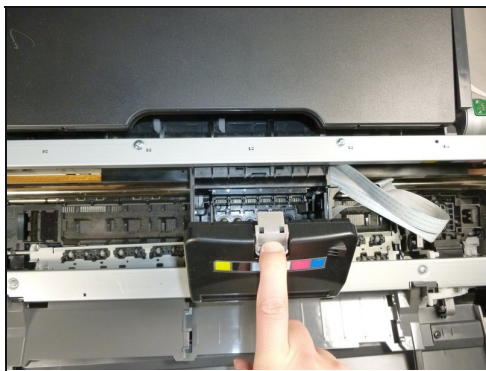
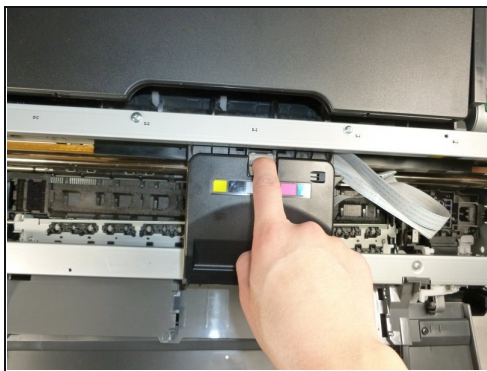
- Insert a flathead screwdriver into the hole on the right side of the frame.
- Turn the screwdriver counterclockwise until it stops.

Step 14



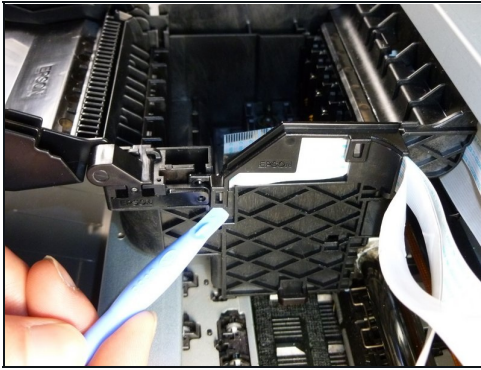
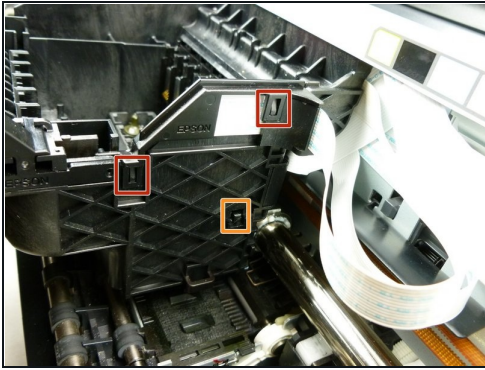
- Move the carriage unit to the center.

Step 15



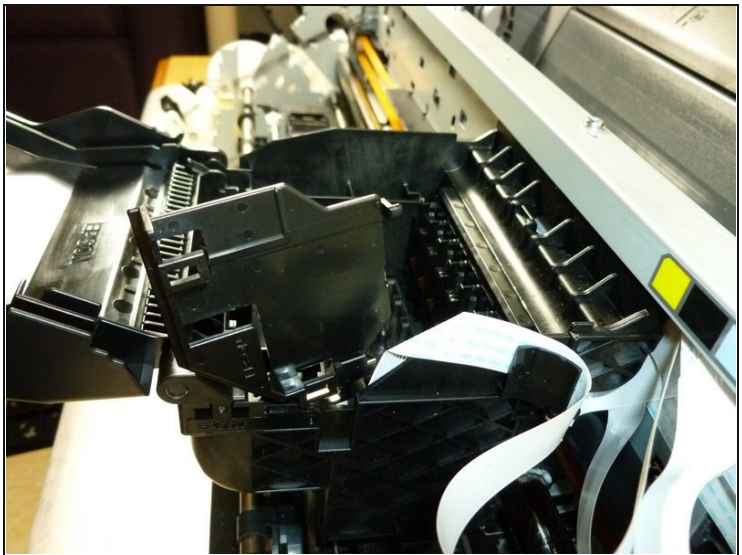
- Open the cartridge cover.
- Remove all the ink cartridges inside.

Step 16



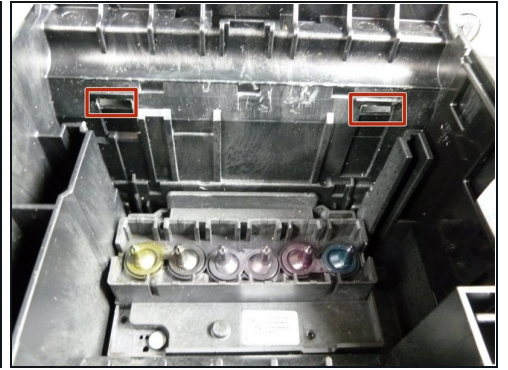
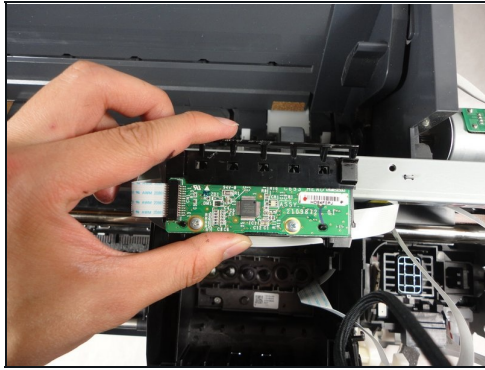
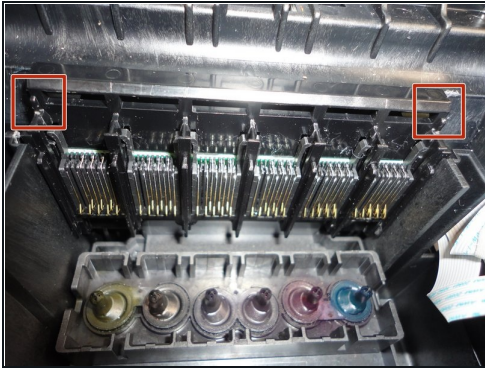
- Using a plastic opening tool, disengage the two upper tabs on the side of the carriage unit.
- With a spudger or plastic opening tool, disengage the lower tab.

Step 17



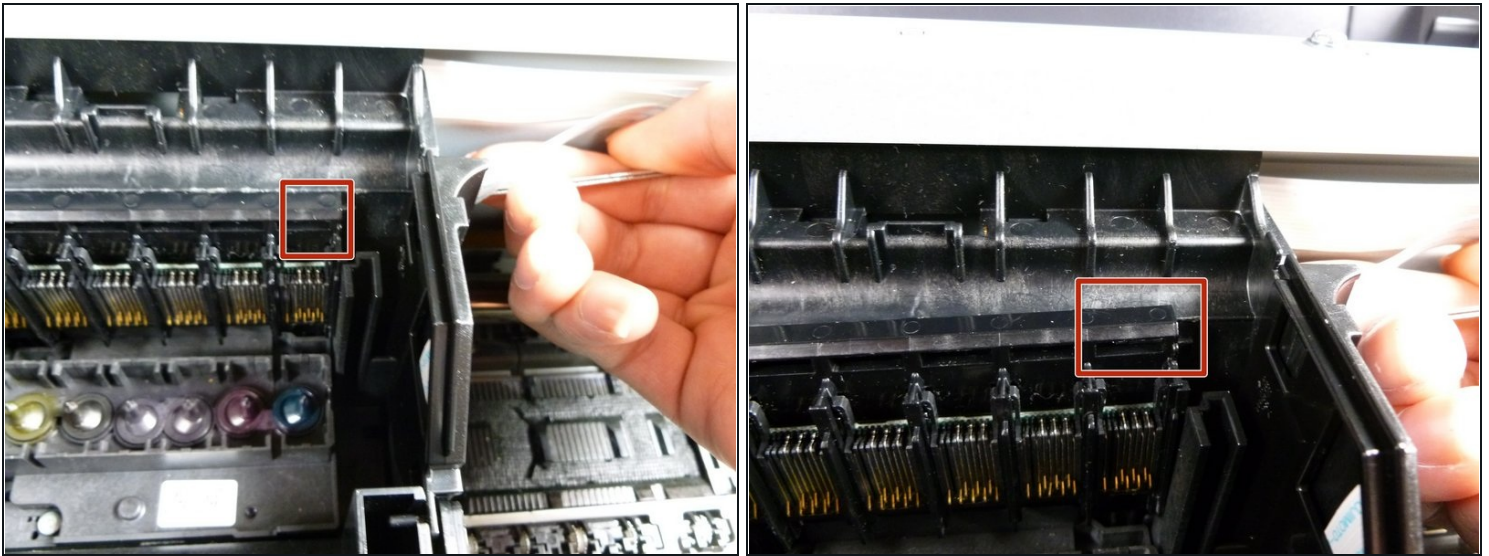
- Slide the cover upward and rotate it around the hinge by 90°.

Step 18



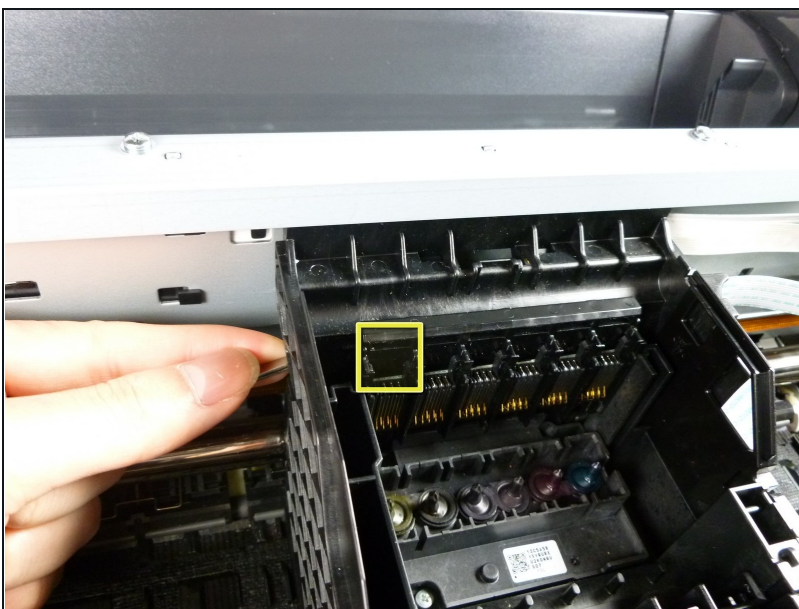
- ① The CSIC assembly sits inside the carriage unit.
- Reaching from the back of the carriage unit, disengage the two tabs that hold the CSIC assembly in place.
- ① The tabs can be difficult to disengage. The second image shows the rear of CSIC assembly.
- ① The third image shows where the tabs lock onto the carriage unit.
- Remove the CSIC assembly from the carriage unit.

Step 19



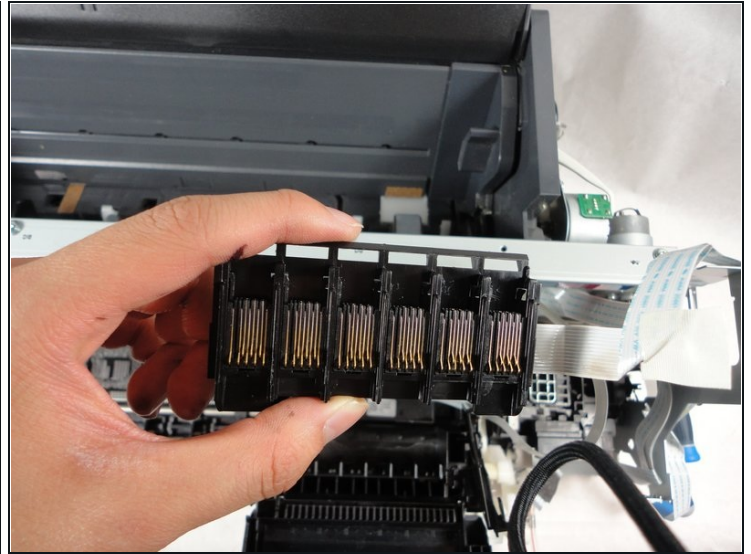
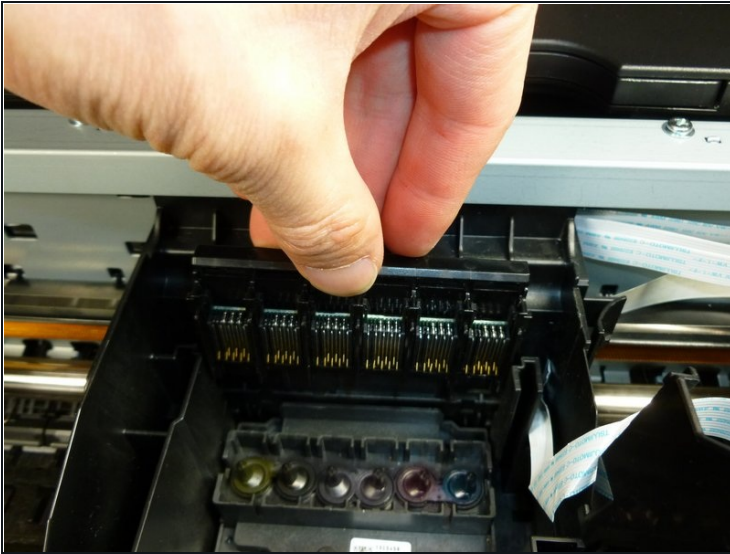
- Using [tweezers](#), disengage the right tab from the back right panel of the carriage unit.
- Push the tweezers towards the front of the printer while pulling up on the right panel.
- ① When the tab is disengaged, you can pull the panel upwards slightly to prevent the tab from engaging.

Step 20



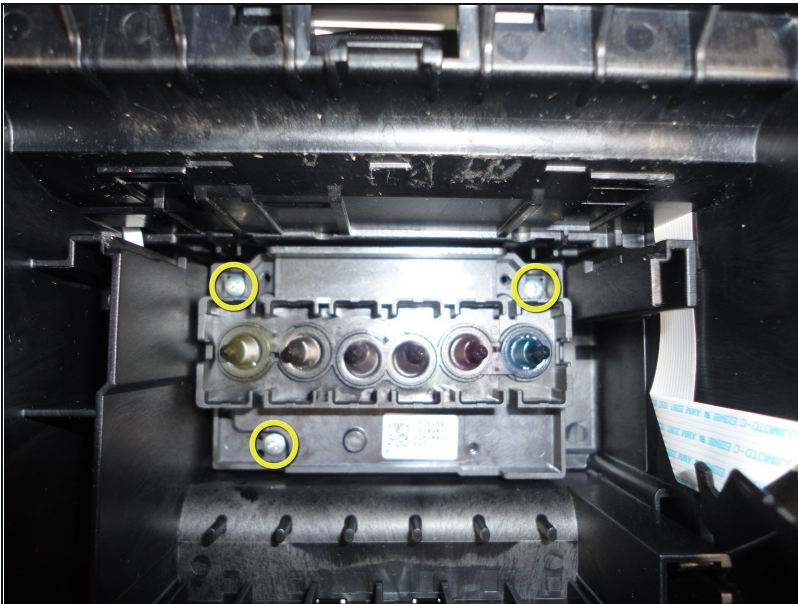
- Using the tweezers, disengage the left tab from the back left.
- Push the tweezers towards the front of the printer while pulling on the left side upwards.
- When both tabs are disengaged, the part is slightly raised.

Step 21



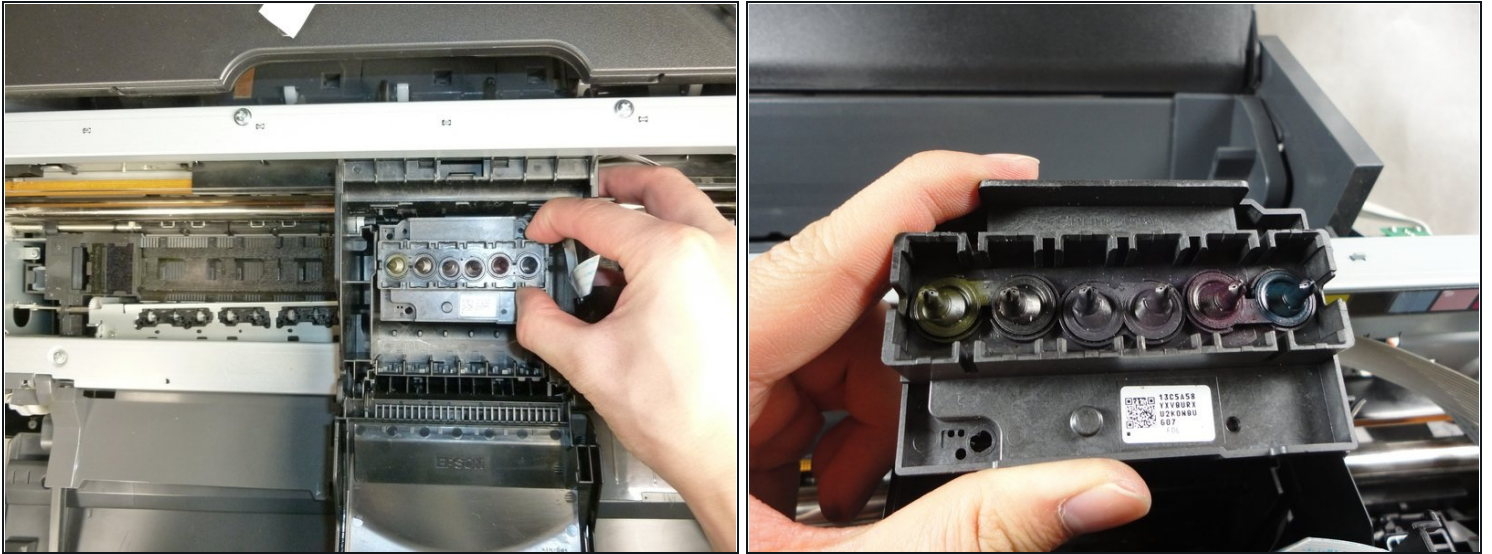
- Lift CSIC assembly up and out of the Carriage Unit.

Step 22



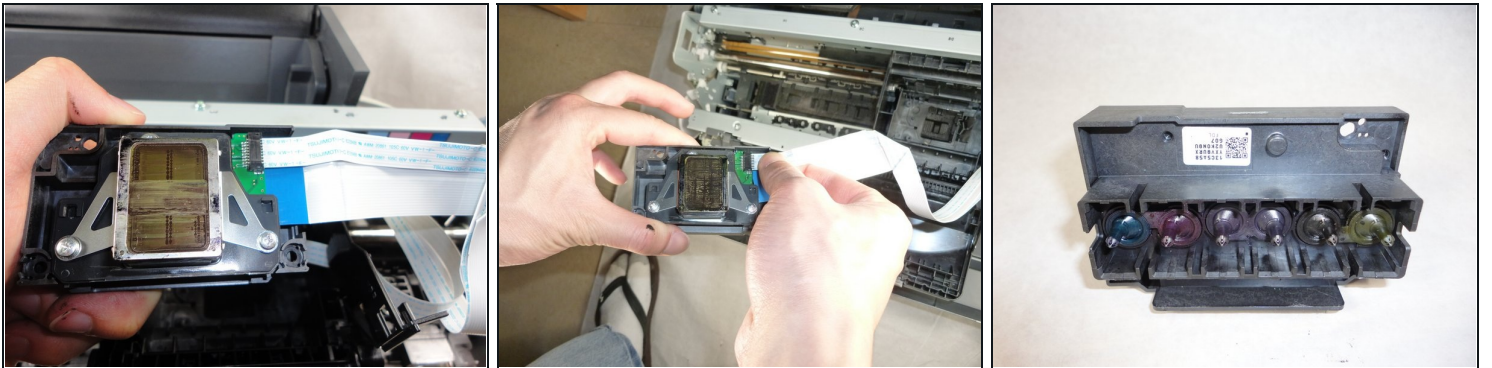
- ① The printhead is the part with 6 nozzles.
- Remove the three 8 mm #2 Phillips screws that secure the printhead.

Step 23



- Remove the printhead from the carriage unit by lifting it up vertically.

Step 24



- Disconnect the two ribbon cables on the back of the printhead.

To reassemble your device, follow these instructions in reverse order.