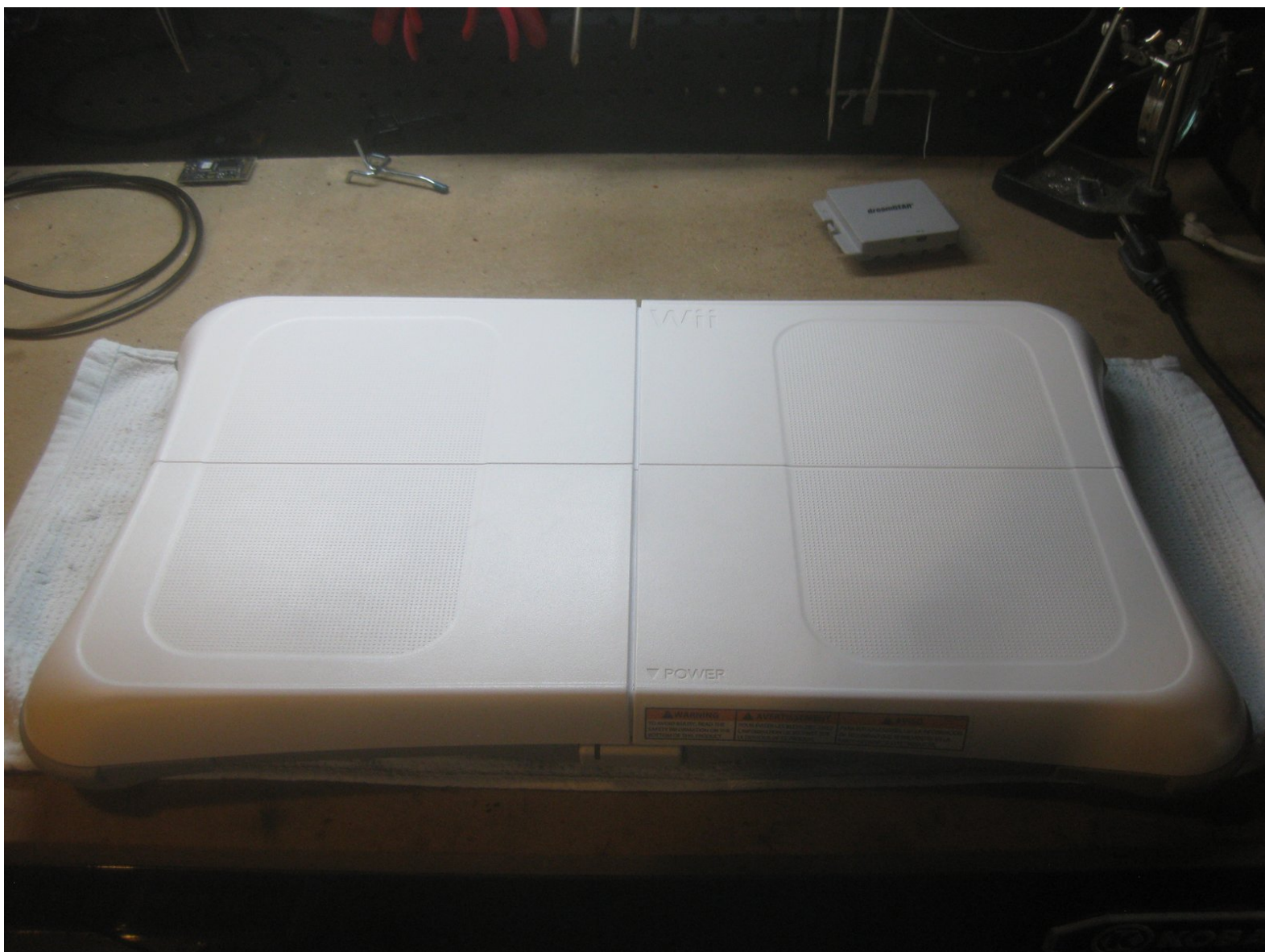




# Disassembling Wii Balance Board

Here's how to disassemble your Wii Balance Board.

Written By: Pete Marchetto





## TOOLS:

- [Phillips #1 Screwdriver](#) (1)
-

## Step 1 — Floor Unit



- Unscrew these #1 Philips screws, and leave them in the plastic foot holders.

## Step 2



- Remove the foot holders and place them on the side



### Step 3



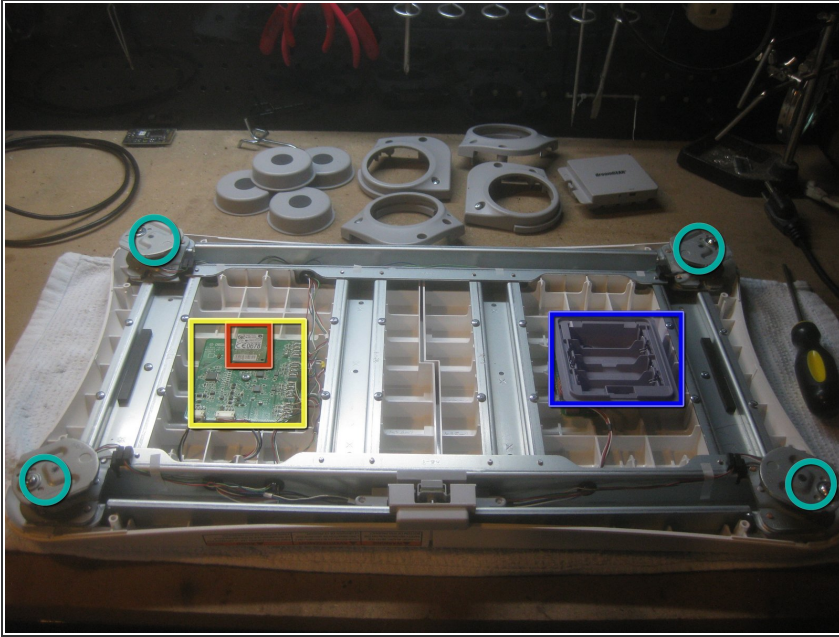
- Remove the four feet and place them on the side

### Step 4



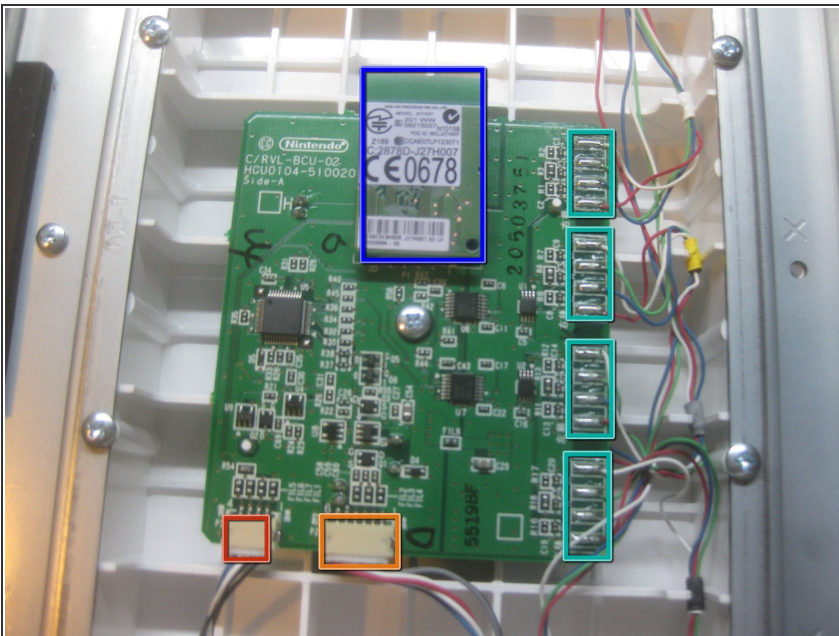
- Remove these #1 Philips screws, and leave them in their counterbores

## Step 5



- Lift grey shell off and place to the side to reveal:
- ADC and Logic board
- Bluetooth module
- Strain gauges
- Battery holder

## Step 6



- The ADC and Logic board contains:
- Bluetooth module
- Power button connector
- Battery and sync button connector
- Strain gauge wheatstone bridge connections
  - The topmost connection for each of the four bridge connections is the ground; relative to this, the two middle connections should be at 1.2 VDC, and the bottom should be at 2.7 VDC

To reassemble your device, follow these instructions in reverse order.

This document was generated on 2020-11-20 03:04:48 AM (MST).

