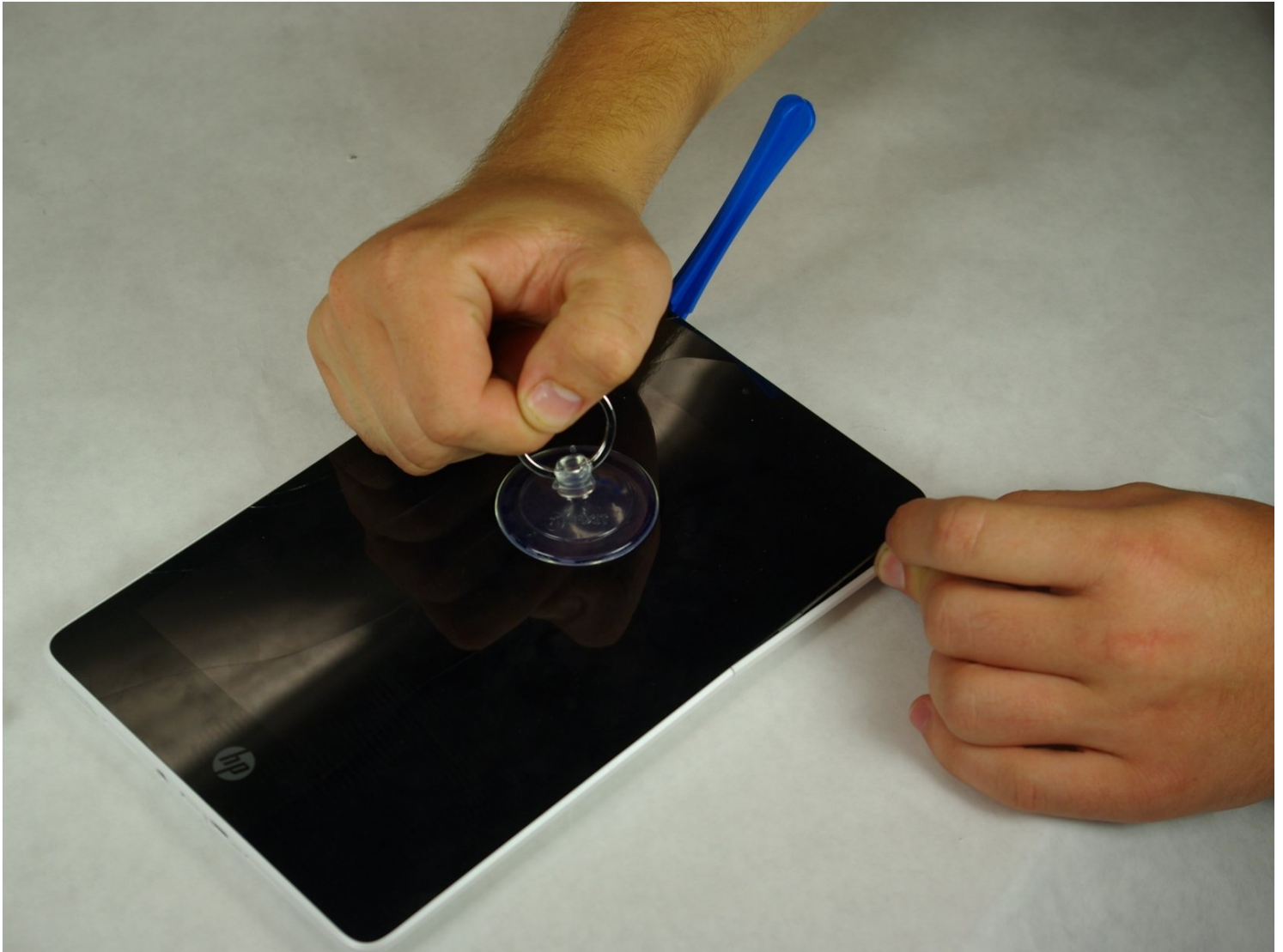




# HP Slate 8 Pro Rear Facing Camera Replacement

This guide will show you how to pry open the...

Written By: Andrew Hall



# INTRODUCTION

This guide will show you how to pry open the screen and replace the Rear Facing Camera.

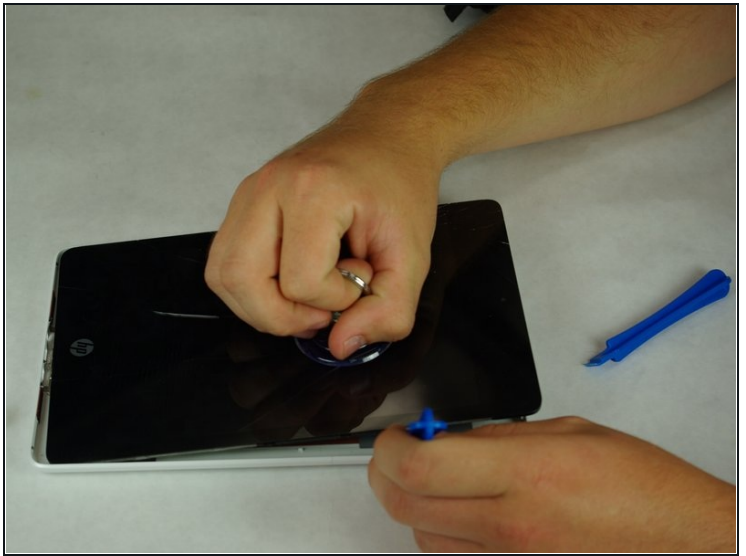
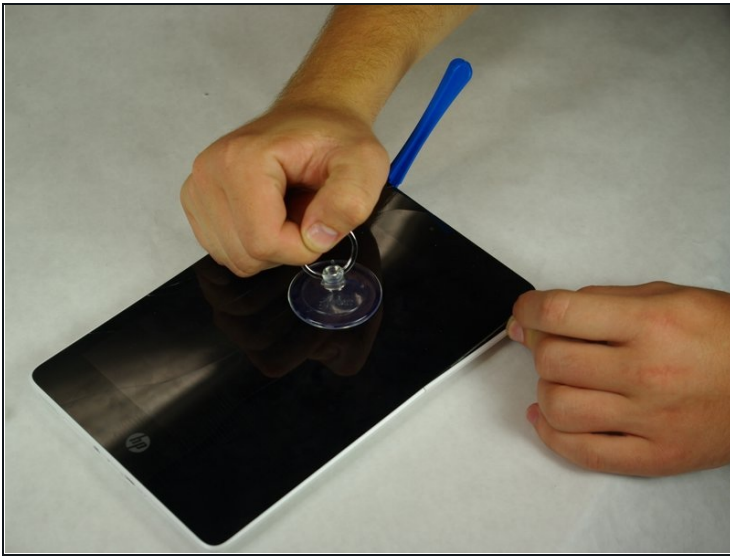
## TOOLS:

[iFixit Opening Tool](#) (1)

[Spudger](#) (1)

[Tweezers](#) (1)

## Step 1 — Rear Facing Camera



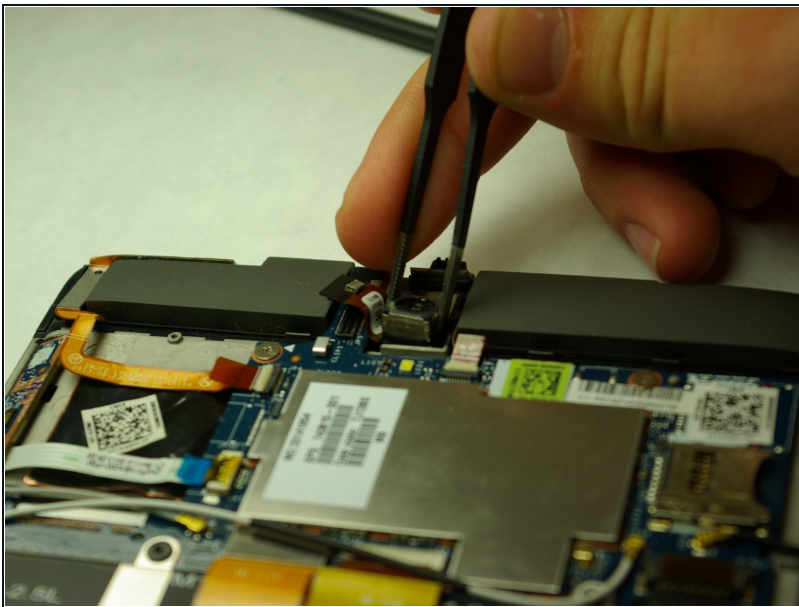
- Secure the suction cup to the center of the screen.
- Using a plastic opening tool, pry along the edges of the display while pulling upwards with the suction cup.

## Step 2



- Use the Spudger to disconnect the ribbon cable to the rear facing camera.

## Step 3



- Use the [tweezers](#) to pry the camera assembly away from the motherboard.

---

To reassemble your device, follow these instructions in reverse order.