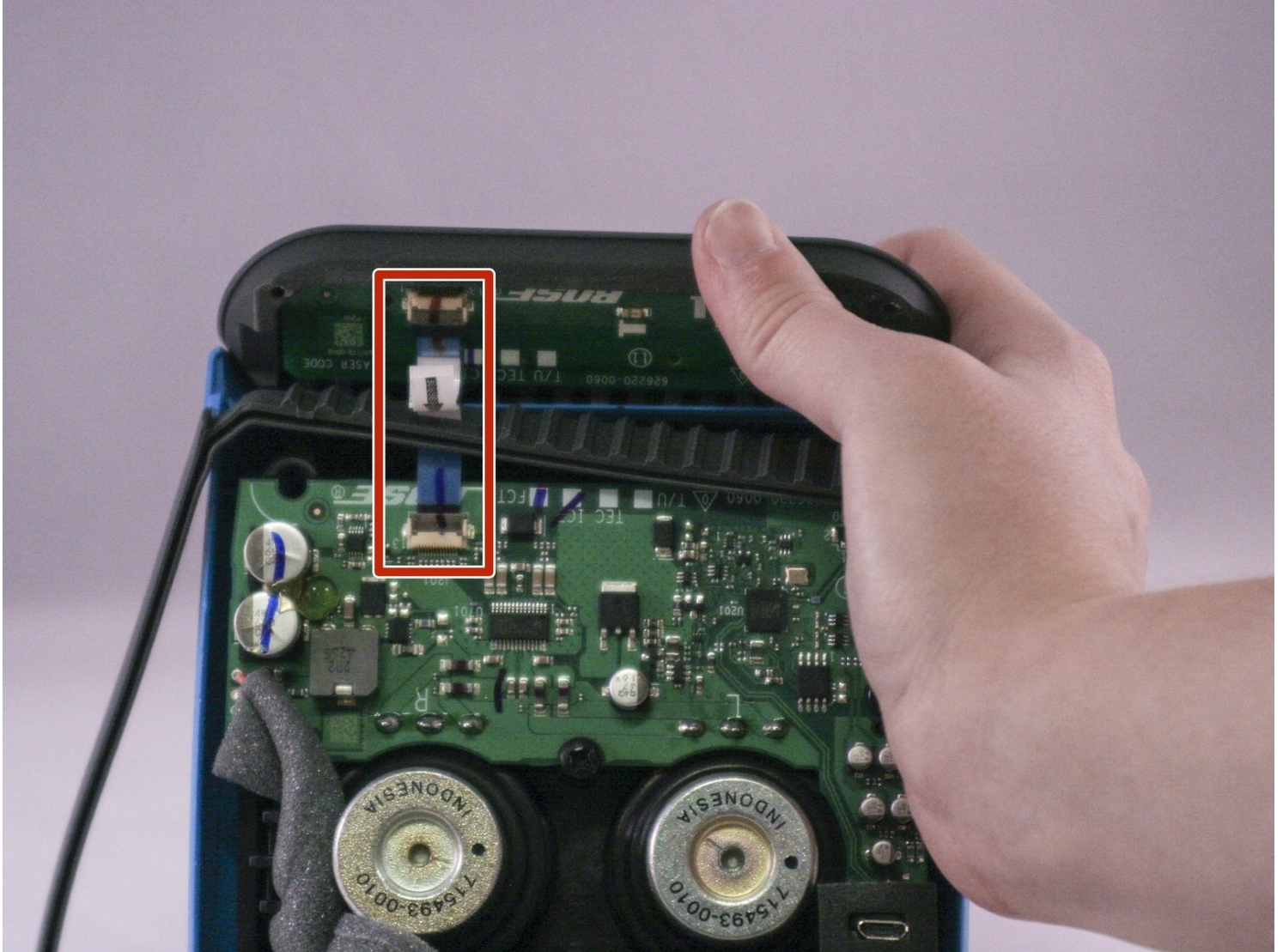




Bose SoundLink Color Speaker Replacement

For this guide, an almost complete breakdown of...

Written By: Brett Horstketter



INTRODUCTION


For this guide, an almost complete breakdown of the device will be required. This includes removal of the outer casing and the circuit-board, as well as a bit of **soldering**.

TOOLS:


- Phillips #0 Screwdriver (1)
- Metal Spudger (1)
- Pro Tech Toolkit (1)
- Tamper Resistant TORX Plus TR Bit (1)
- Soldering Iron 60w Hakko 503F (1)
- Spudger (1)

Step 1 — Outer Casing



 Four round, plastic plugs are located on the back of the device.

- Using a metal spudger, carefully pry up the plastic covers.

 The covers are all glued on, so be careful not to scar the casing when prying them off. If possible, use a spudger or plastic opening tool to remove them.

Step 2



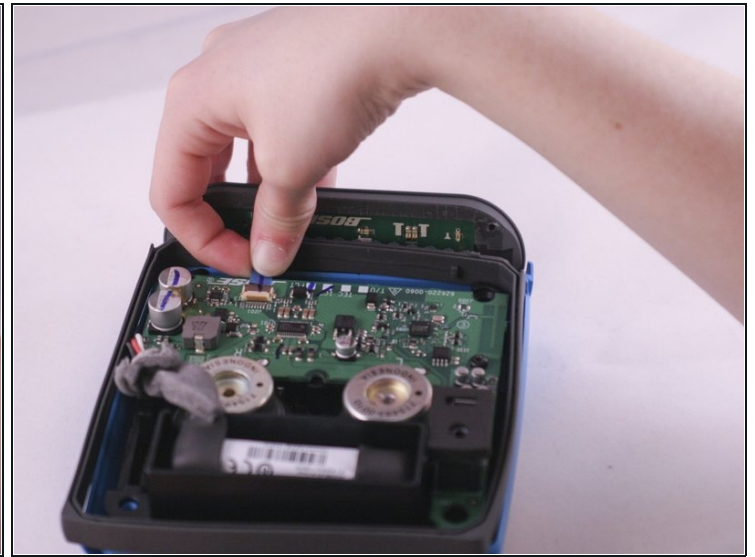
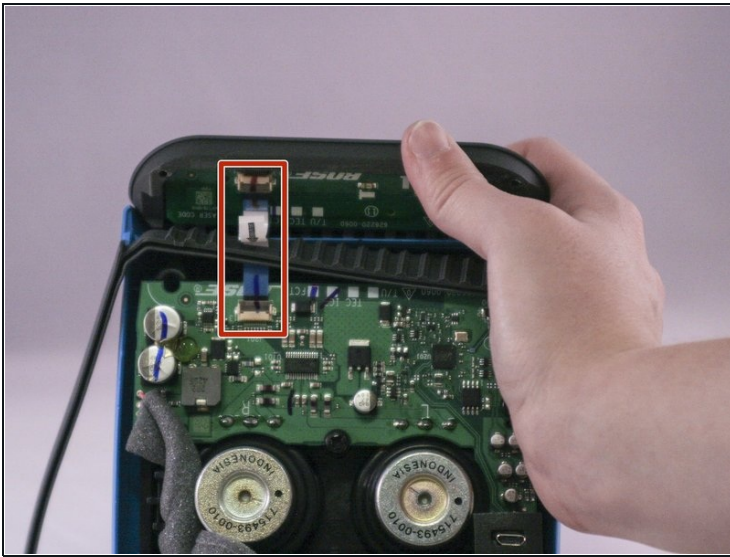
- Remove the four 1.8 cm-long T15 Torx Security screws from the outer case.
 - ⓘ Some of these use T15 "Star" 5-point Torx security screws instead of the more common 6-point ones.

Step 3



- Carefully open up the casing.
 - ✦ The top button pad may need to be re-glued upon installing the new casing.

Step 4 — Speaker



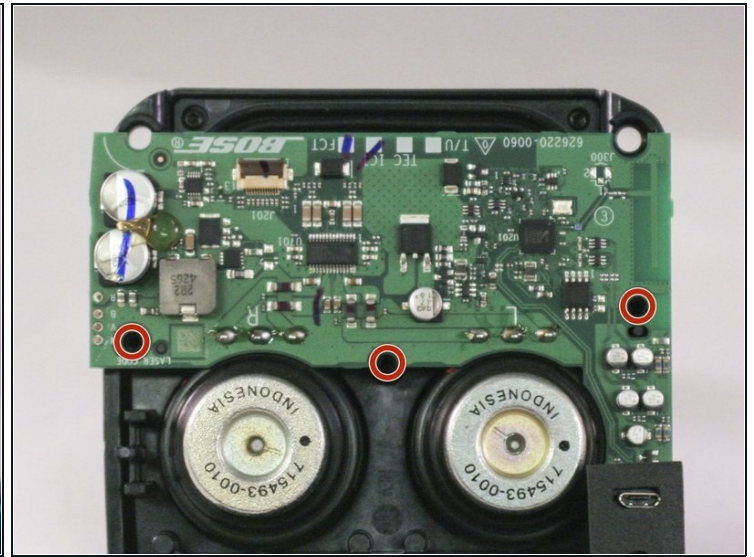
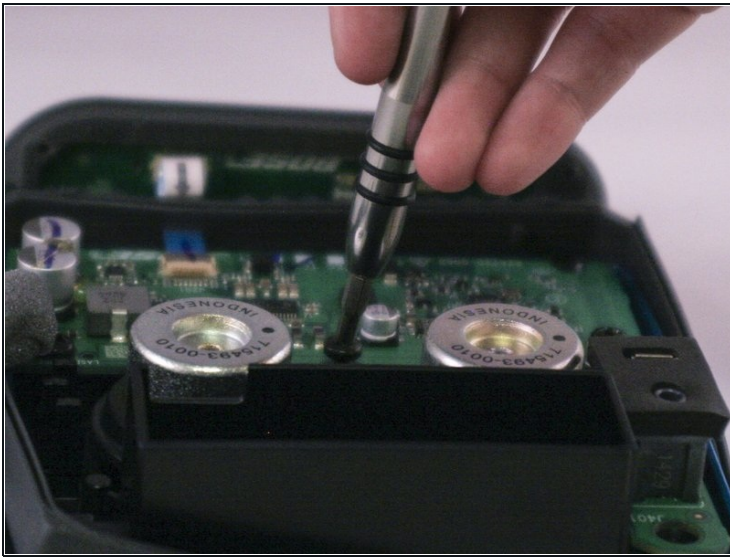
- Lift up the retaining flap on the button cable ZIF connector.
- Pull the button cable straight out of the connector.
- Remove the inner assembly.

Step 5



- ① The speakers are on the front of the inner assembly.
- Using the Phillips head screwdriver, unscrew the four 1.3 cm screws holding the speaker that will be replaced.

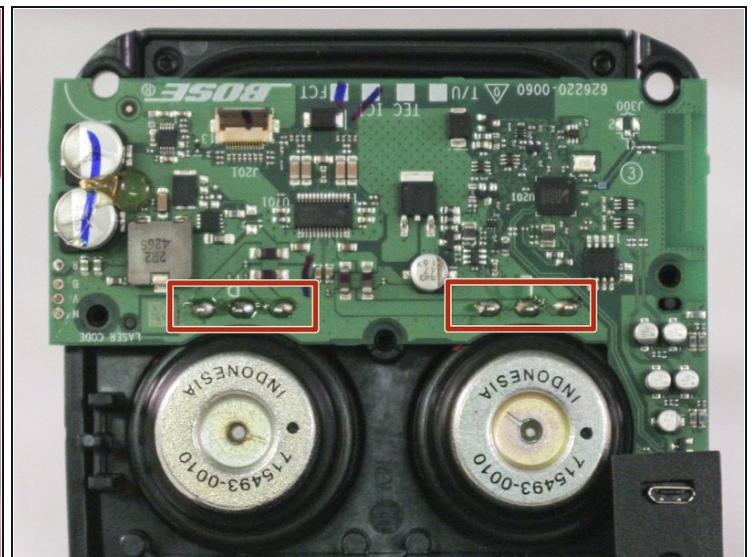
Step 6



① Three screws hold the printed circuit board.

- Using the Phillips head screwdriver, unscrew the three 1.2 cm screws.

Step 7



- Desolder each the three pins connecting the speaker to the motherboard.
- Carefully lift the motherboard with a spudger to ensure that each pin desolders.

⚠ Work carefully. Prying too hard may cause damage to the board.

Step 8



- Push the speaker through the front of the inner assembly.

To reassemble your device, follow these instructions in reverse order.