



# HP Stream 8 Front Facing Camera Replacement

If the front facing camera on your HP Stream 8...

Written By: Nick Miller



# INTRODUCTION

If the front facing camera on your HP Stream 8 is broken, use this guide to replace it. This guide requires a battery, unplug the device and power it off.

---

## TOOLS:

[Phillips #00 Screwdriver](#) (1)

[Tweezers](#) (1)

---

## Step 1 — Midframe



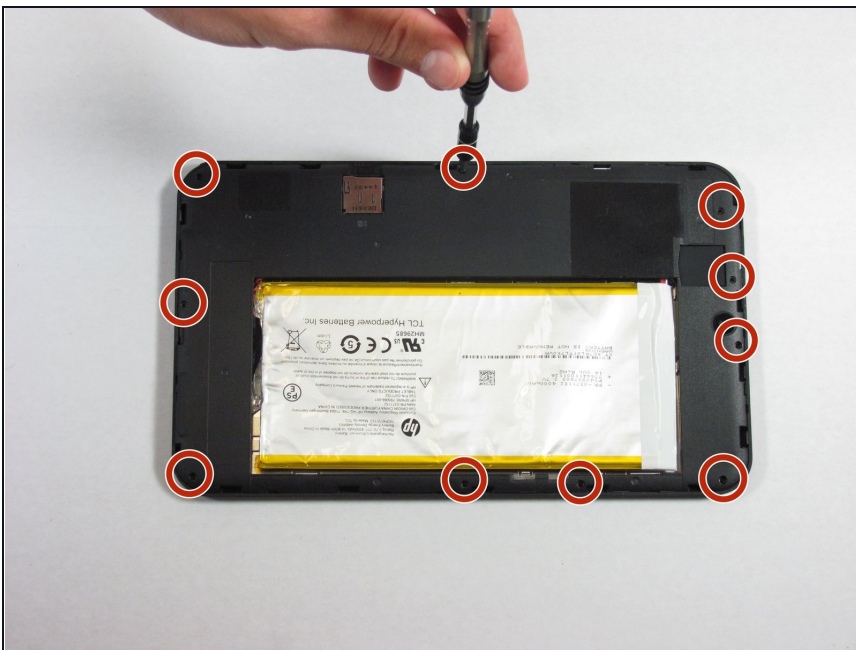
- Use your nail or a spudger to pry the back cover off of the device.

## Step 2



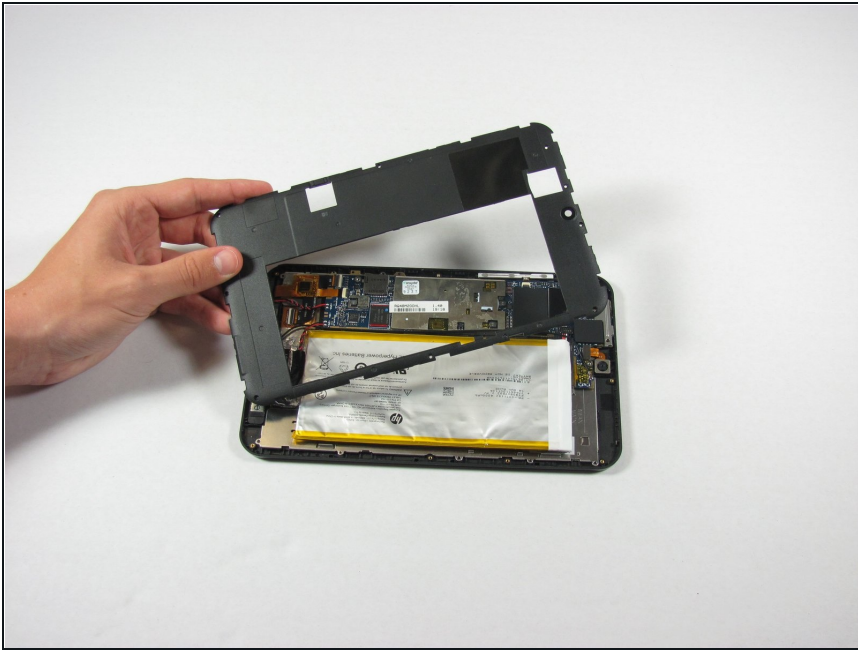
- Slide your finger around the rest of the back cover, lifting it completely off of the device.

## Step 3



- Remove ten Phillips #00 screws from the inside cover.

## Step 4



- Pry up the inside cover the same way as in the first step.

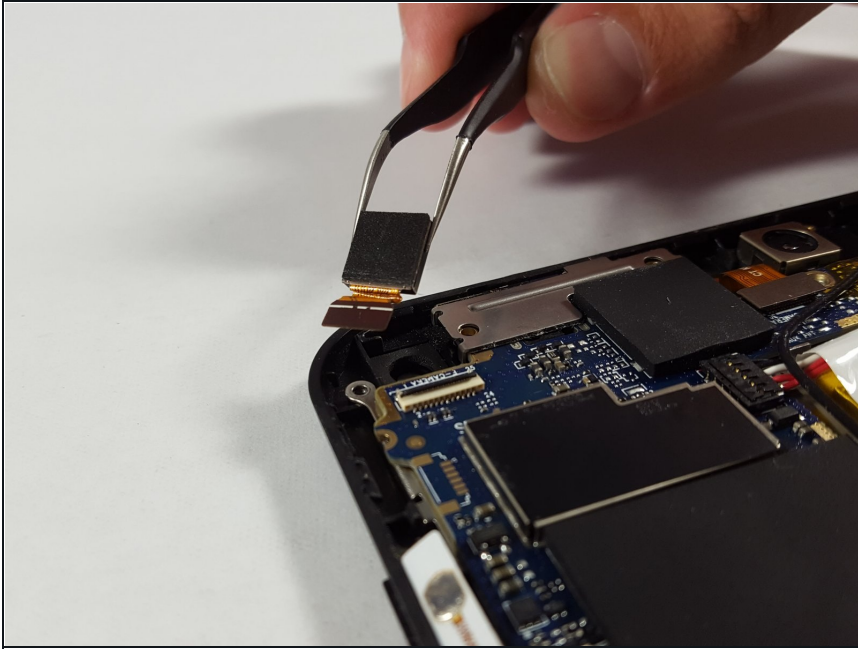
## Step 5 — Front-Facing Camera



- Lift up on the small black tab at the connection point to unlock the flex ribbon cable using the tweezers.



## Step 6



- Remove the front facing camera with tweezers.

---

To reassemble your device, follow these instructions in reverse order.