



# HP Stream 8 Midframe Replacement

The midframe in an HP contains a power...

Written By: Nick Miller



# INTRODUCTION

The midframe in an HP contains a power connector/volume board as well as the mid plate bezel. In this guide you will learn how to replace the midframe within a HP stream 8 carefully and swiftly.

---

## TOOLS:

Phillips #00 Screwdriver (1)

---

### Step 1 — Midframe



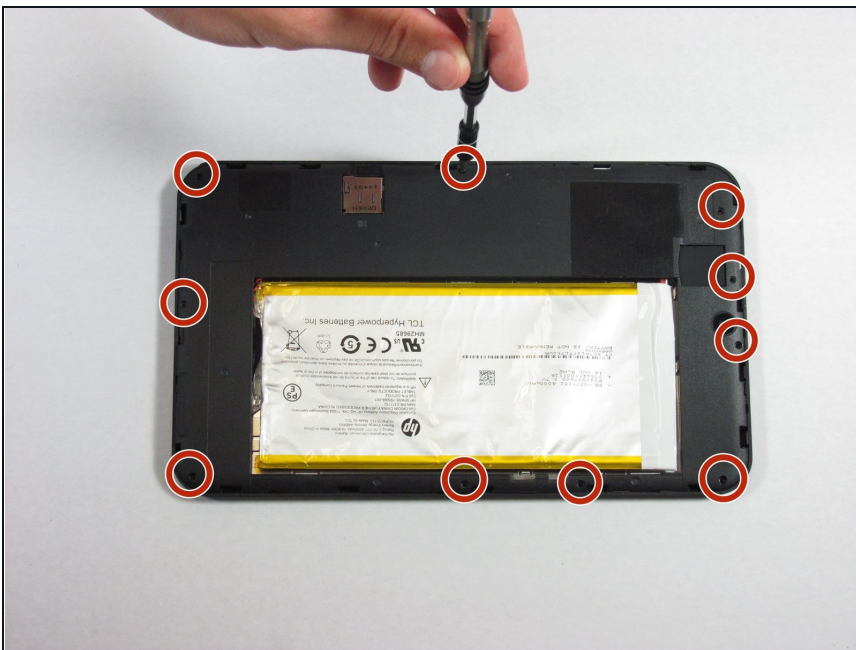
- Use your nail or a spudger to pry the back cover off of the device.

## Step 2



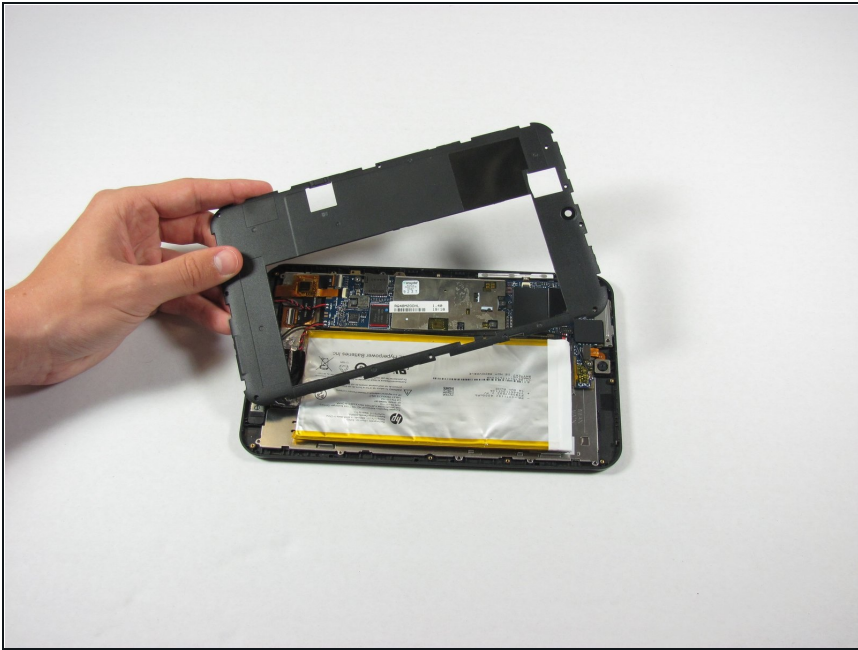
- Slide your finger around the rest of the back cover, lifting it completely off of the device.

## Step 3



- Remove ten Phillips #00 screws from the inside cover.

## Step 4



- Pry up the inside cover the same way as in the first step.

---

To reassemble your device, follow these instructions in reverse order.