



Nutri Ninja BL450 Small Rubber Wheel Replacement

Using this guide, the user will be able to replace the small rubber wheel that connects the blade assembly to the blender base.

Written By: Morgan Blauth



INTRODUCTION

Using this guide, the user will be able to replace the small rubber wheel that connects the blade assembly to the blender base.



TOOLS:

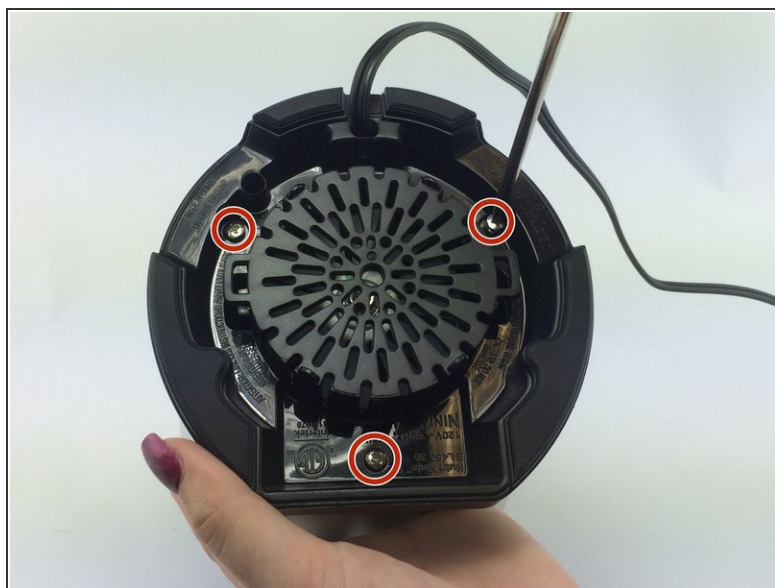
- [Phillips #1 Screwdriver](#) (1)
 - [T9 Torx Screwdriver](#) (1)
-

Step 1 — Small Rubber Wheel



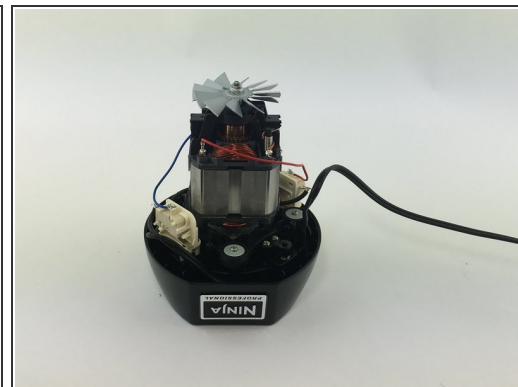
- Remove the cup from the blender base.

Step 2



- Turn the blender over and unscrew the three 14 mm screws holding the slotted base in place. These are Torx Security bits (TR9) on some units.

Step 3



- Using a the standard Phillips head screwdriver bit, remove the slotted black plastic covering and then unscrew the one 11mm screw holding the power cord in place.
- Unscrew the four 14 mm screws that are in the deep slots. This will release the motor from the base.

Step 4



⚠ CAUTION: the silver blade attached to the motor is very sharp. Use a towel or thick cloth to protect your hands for the next step.

- Using a towel, hold the silver fan still. Twist the small black rubber wheel that is attached to the top of the blender base to the right. This will remove the wheel for replacement.

To reassemble your device, follow these instructions in reverse order.