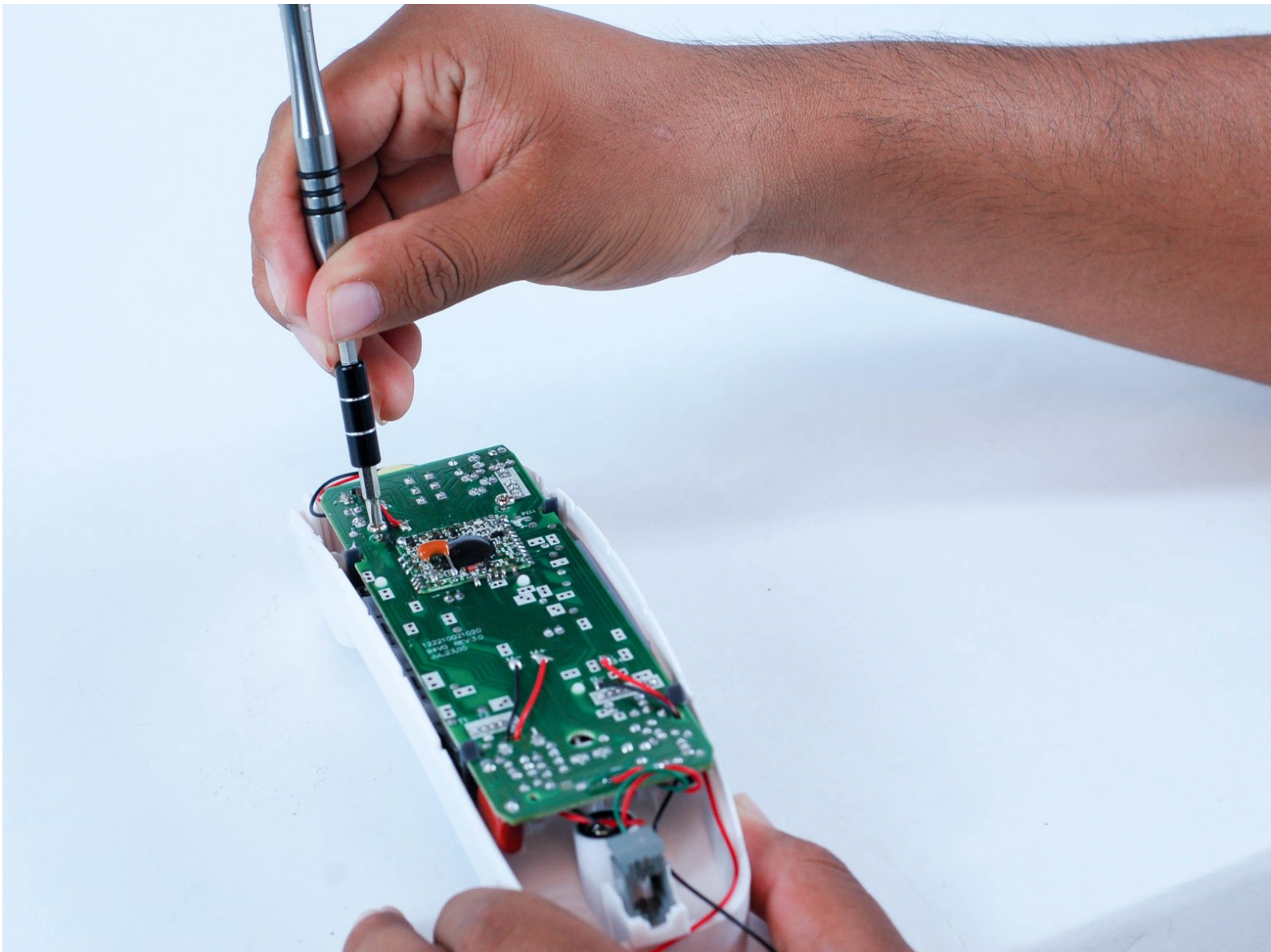




ATT Trimline 210M Motherboard Disassembly

You will remove the motherboard from the phone with this guide.

Written By: Juan Carrillo



INTRODUCTION

You will need to remove the back cover to access the motherboard. The motherboard is held down by two screws, be careful however, since there are many wires attached to the motherboard from speakers and the microphone.

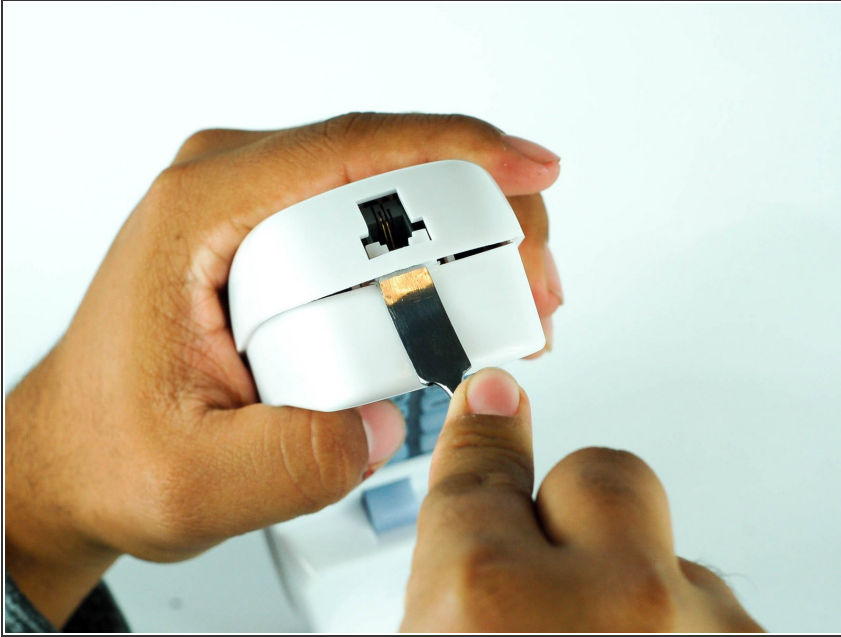


TOOLS:

- [Metal Spudger](#) (1)
- [1/4" Nut Driver](#) (1)
- [JIS Driver Set](#) (1)

J1

Step 1 — ATT Trimline 210M Back Cover Disassembly



- Open up the phone with a metal spudger, sticking it in the bottom near the cord jack entry.
- ⚠ Be careful with the amount of force you use, or the plastic may crack.

Step 2



- Pull up on the spudger while simultaneously pulling up the top shell of the phone.

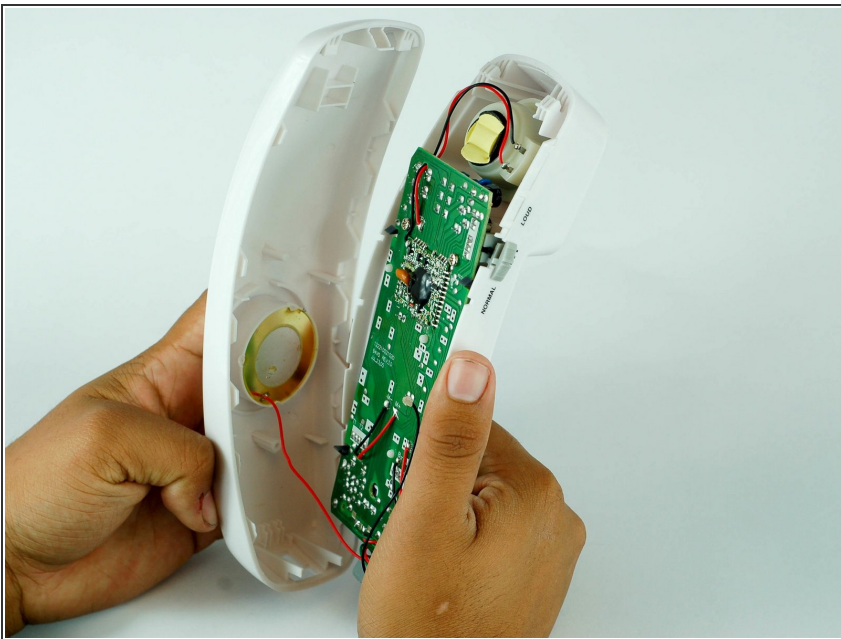
Step 3



- After unclipping the bottom half of the shell, pull upward from the position shown in the picture to detach the top half of the shell.

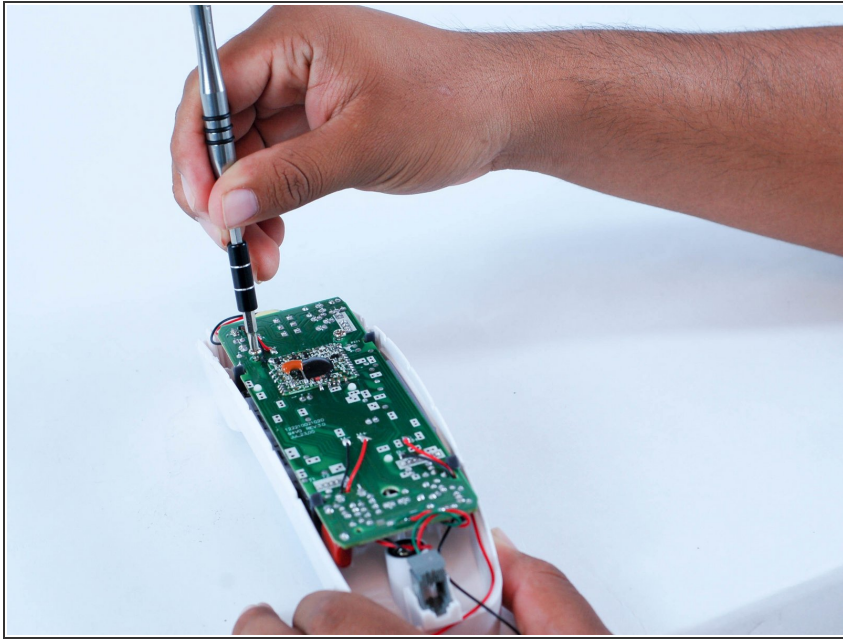
⚠ The cord connecting the speaker is short, and may detach if not done carefully.

Step 4



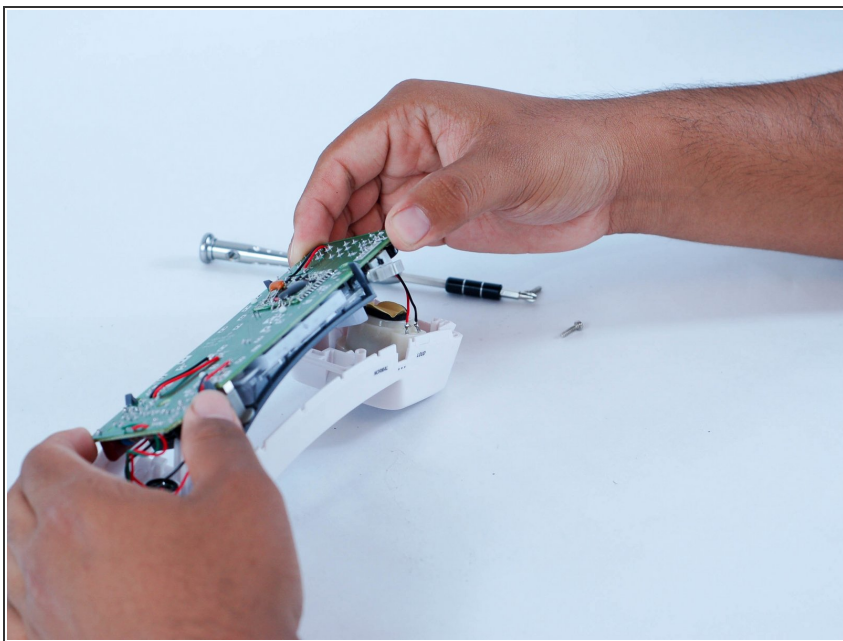
- You will have the motherboard and speaker exposed to you.

Step 5 — ATT Trimline 210M Motherboard Disassembly



- Remove the two 10 mm screws using the 1/4" driver and a J1 Phillips screw head.

Step 6



- Carefully move the motherboard up to remove it.

To reassemble your device, follow these instructions in reverse order.