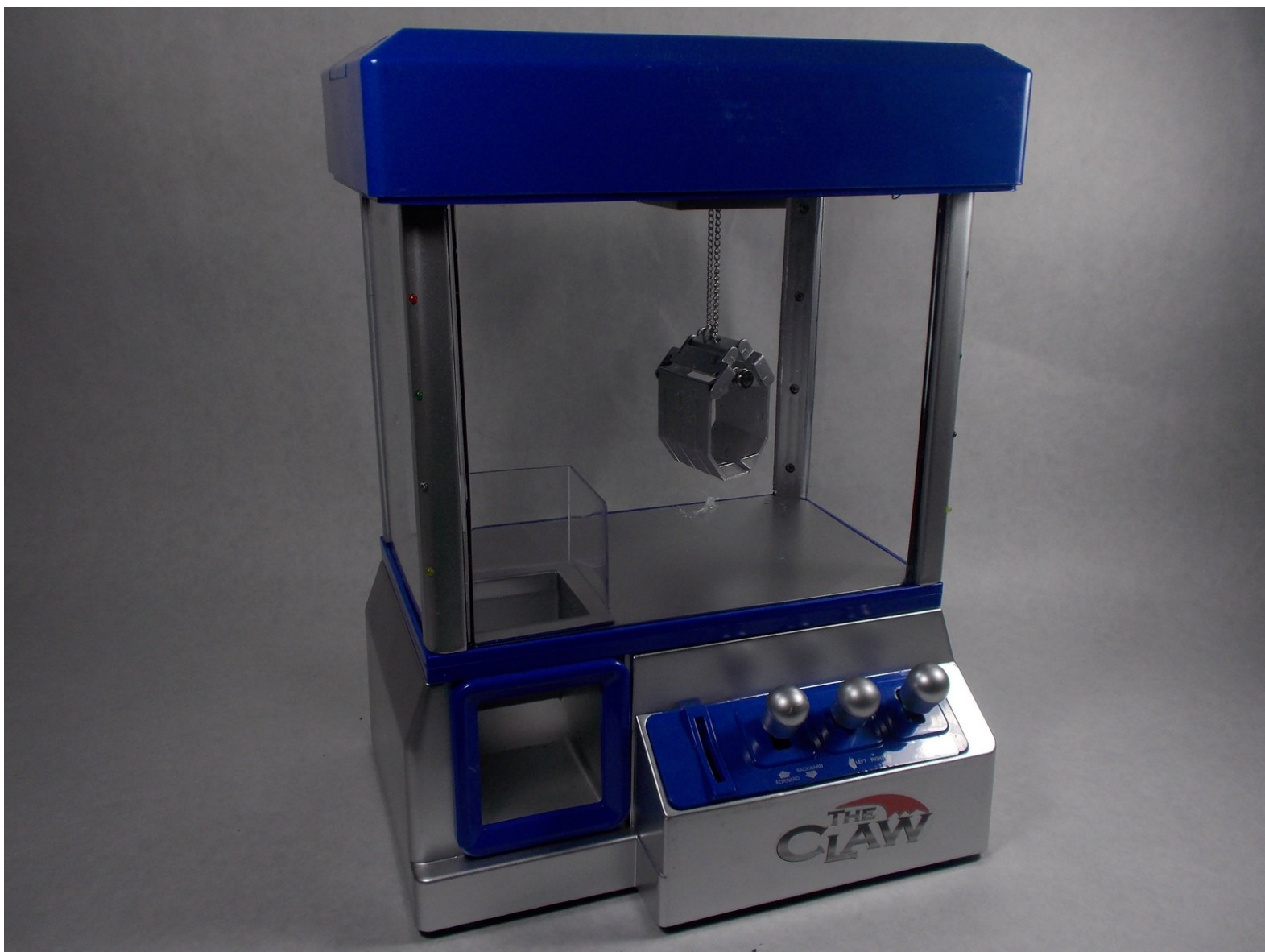




The Claw Bottom Cover Replacement

Prerequisite Only

Written By: Alain Pierre

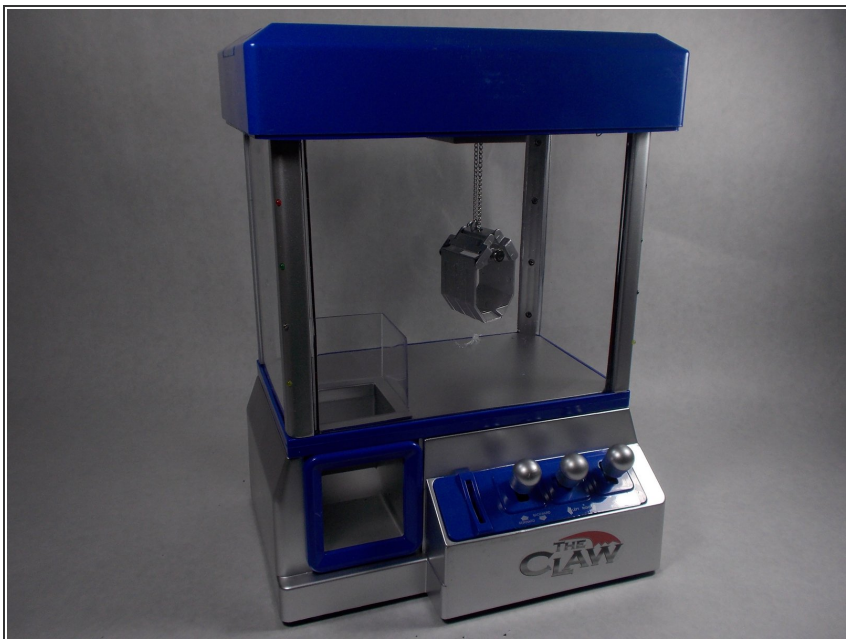




TOOLS:

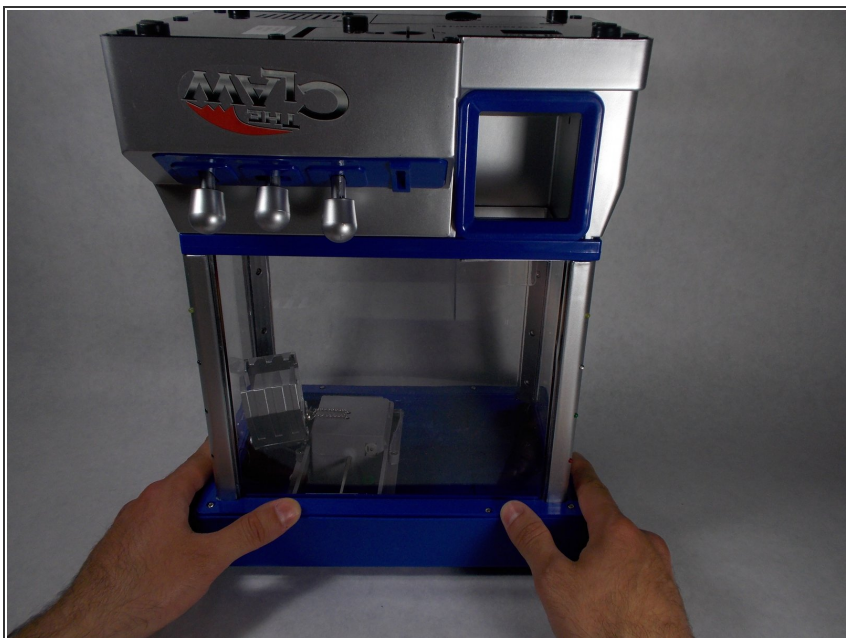
- [Phillips #1 Screwdriver](#) (1)
 - [Soldering Iron](#) (1)
-

Step 1 — Bottom Cover



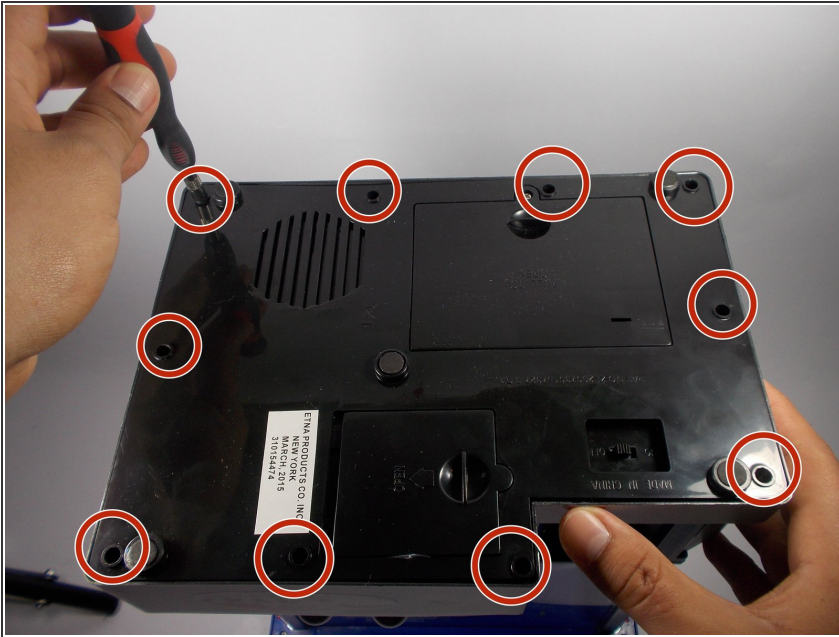
- Place The Claw in upright position with controls facing you.

Step 2



- Gently flip The Claw machine upside down with the controls facing you.

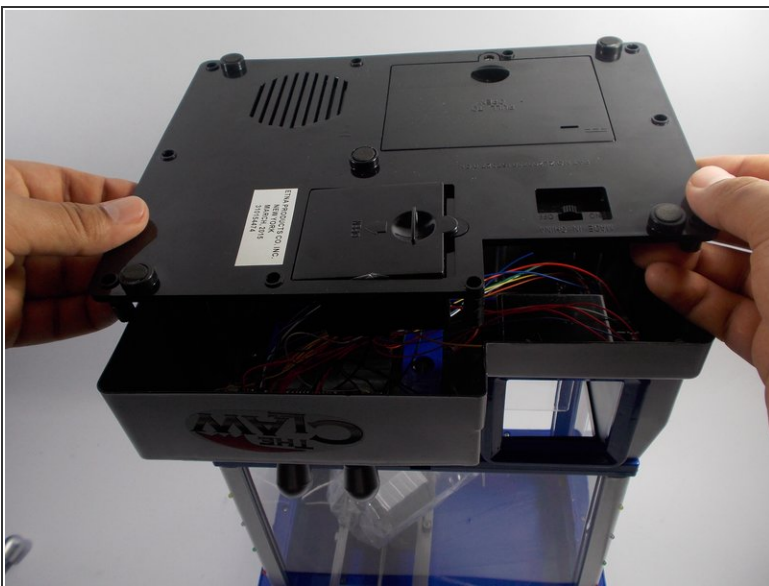
Step 3



- Remove all ten screws from the bottom cover using a Phillips #1 screwdriver.

ⓘ You will need a screwdriver with a long thin neck to fit in the screw holes.

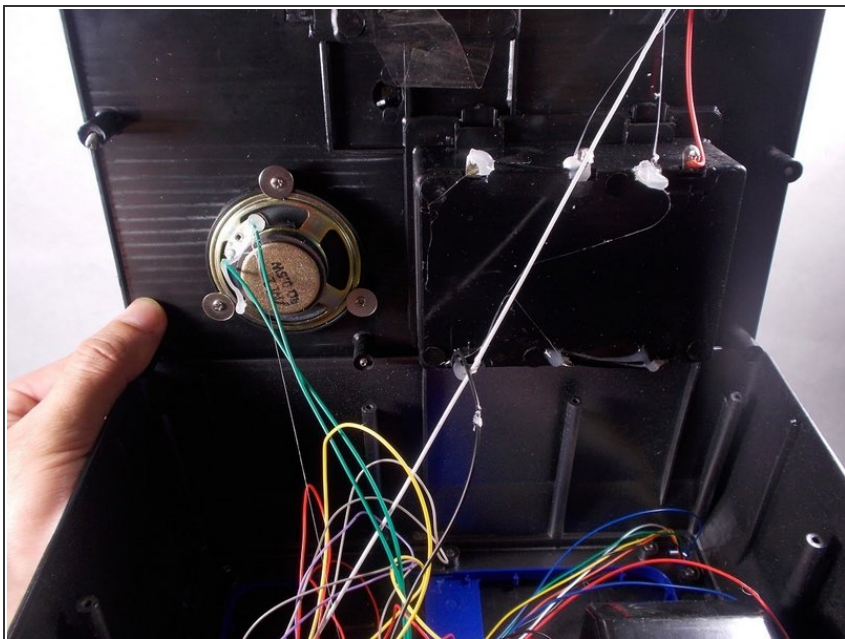
Step 4



- Slide the bottom cover off to the side.

⚠ Do not completely remove bottom cover as it is still connected to wires.

Step 5



i Complete removal of the bottom cover is not necessary, however if you feel you need to take the cover completely off the machine to complete your task it can be done by the following process.

- You will need to cut the two green wires attached to the music player.
 - Then you will need to cut the white wire that leads to the battery compartment.
 - Finally you will need to cut the black wire leading to the battery compartment as well.
- ★** The complete removal of the bottom cover requires the cutting and soldering of wires. For help with soldering reference: [How To Solder and Desolder Connections](#).

To reassemble your device, follow these instructions in reverse order.