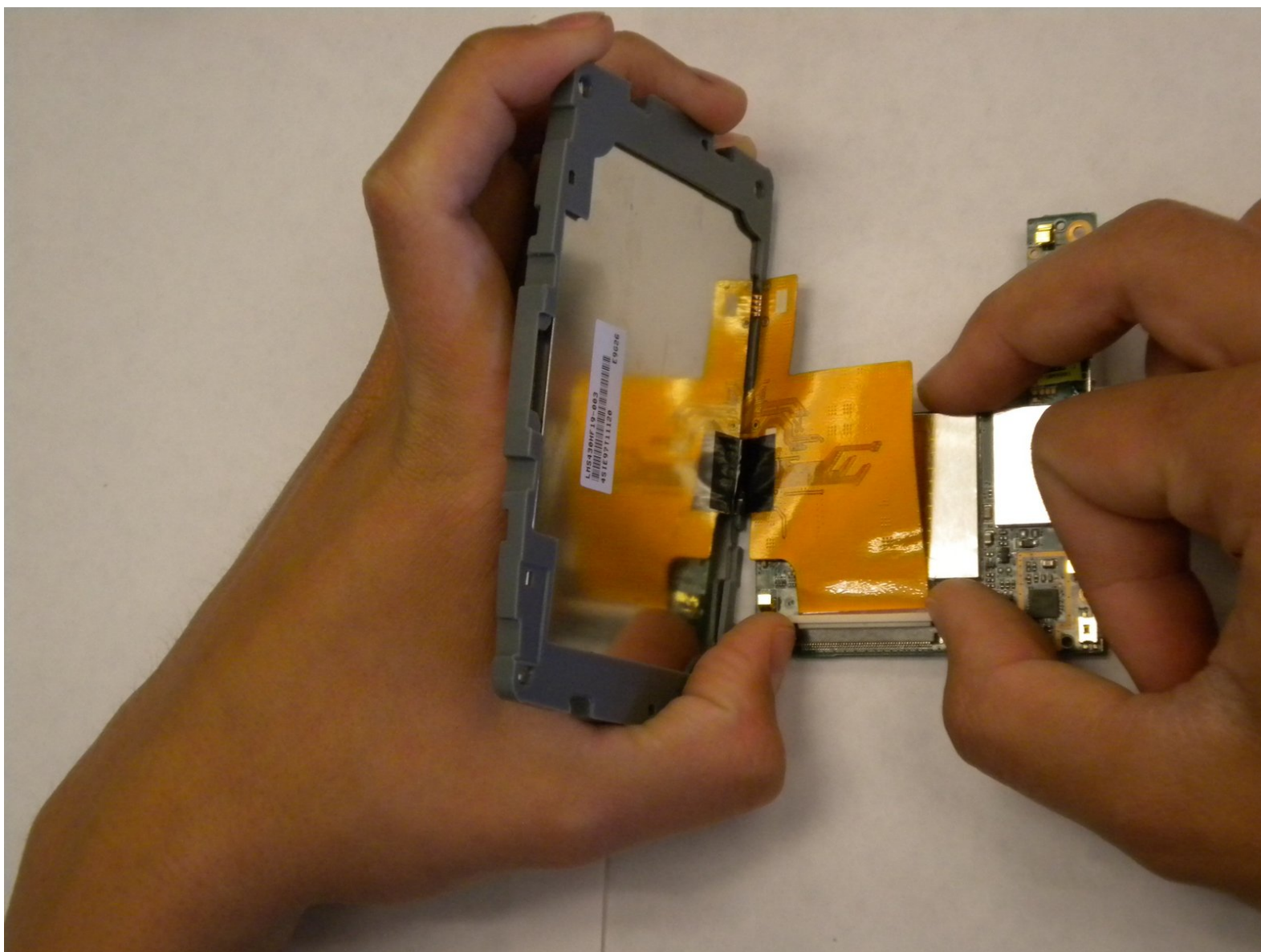




# TomTom XL Screen Replacement

Replace the screen in your TomTom XL.

Written By: Adam Johnson



---

# INTRODUCTION

Use this guide to remove or replace the screen in the TomTom XL.



## TOOLS:

- [Phillips #00 Screwdriver](#) (1)
  - [iFixit Opening Tool](#) (1)
-

## Step 1 — Screen and Motherboard



- Slip a small plastic opening tool underneath the screen bezel, gently sliding it around the inside edge.
- Starting at the corners, carefully pry up the screen bezel.

## Step 2



- Remove the four Phillips #00 screws around the edge of the screen.

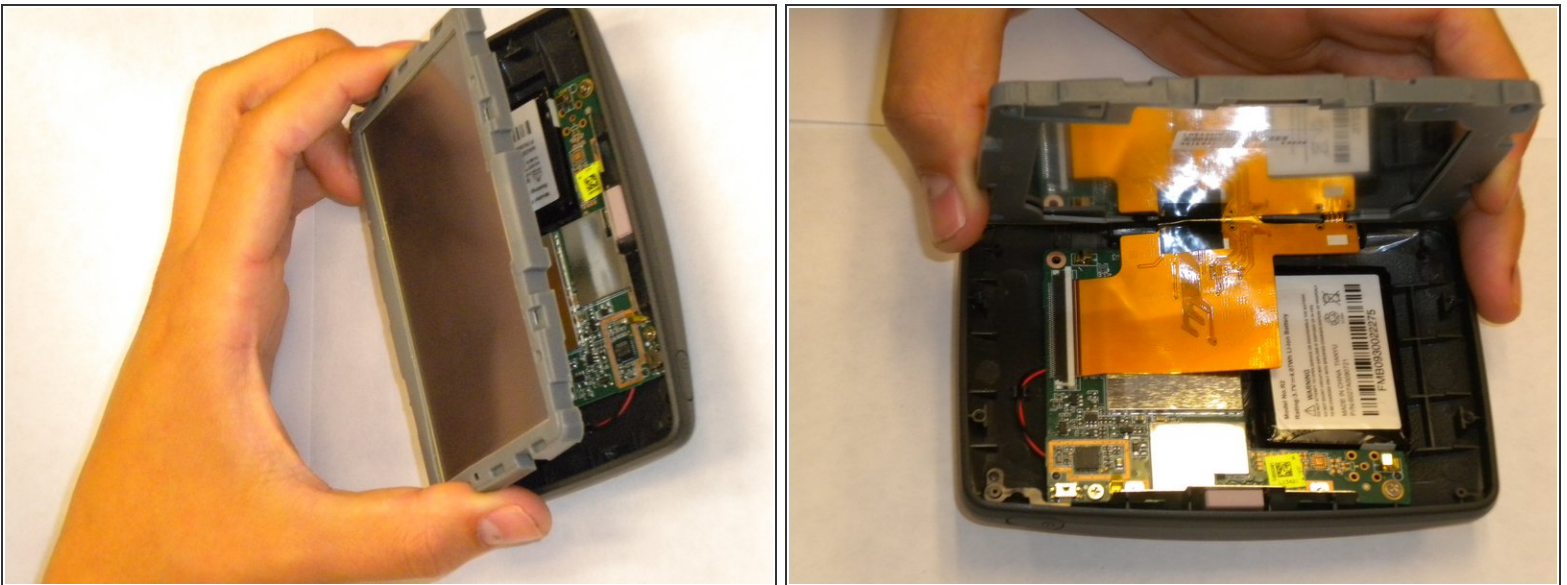


### Step 3



- Slide a small plastic opening tool under the top portion of the metal frame and gently lift it up.
- Slide the plastic opening tool around the inner edge of the metal frame until it feels loose.
  - ⓘ It may take some time to release the frame from the housing. Some force may be necessary—but be careful not to bend the frame's fragile interior bracket.
- Remove the frame from the housing.

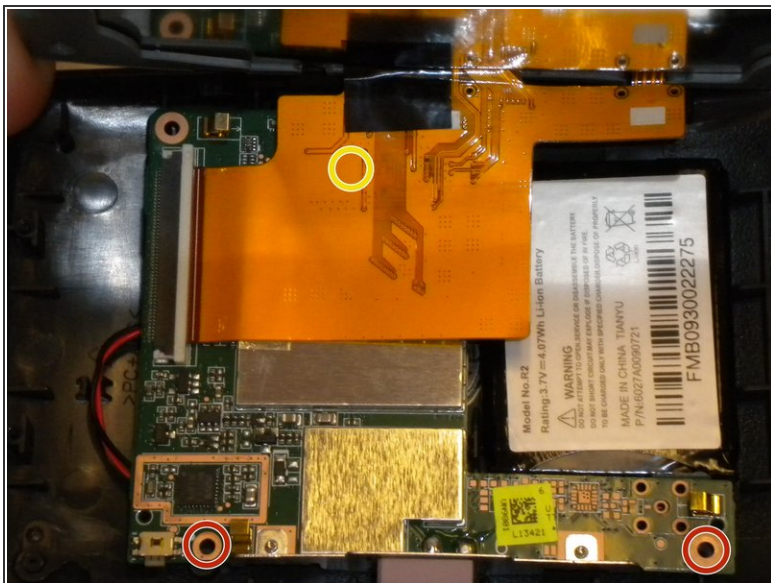
### Step 4



- Lifting from the upper edge of the screen, tilt the screen away from the device.

**⚠ Tilt the screen slowly. Flipping the screen up too quickly may damage the display cable.**

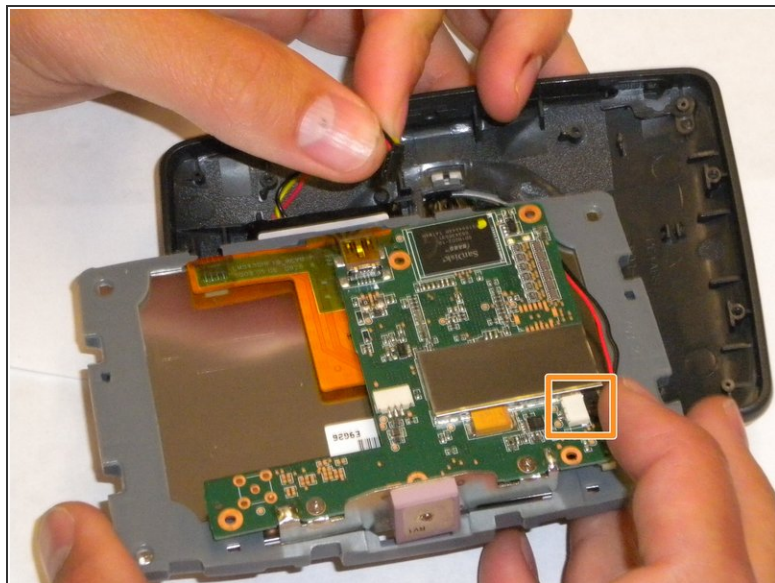
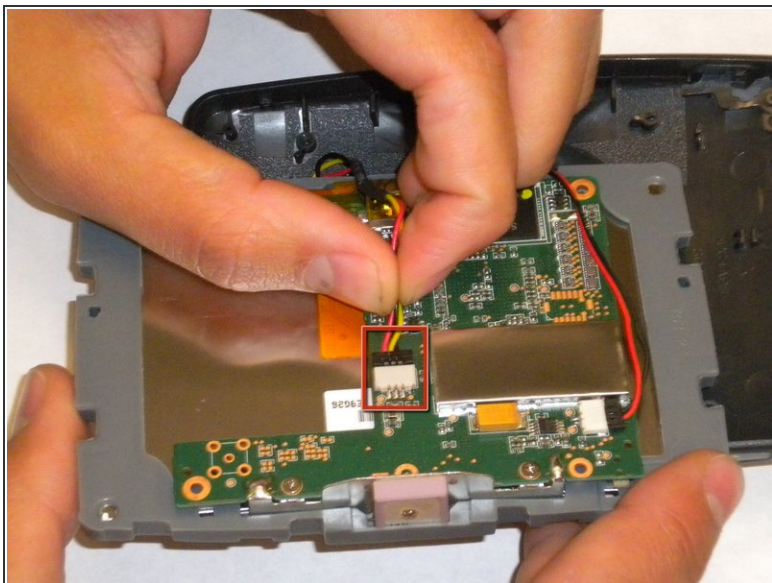
## Step 5



- Remove the three Phillips #00 screws connecting the motherboard to the plastic housing:
  - Two Phillips #00 screws are located at the bottom of the first picture.
  - The third screw is hidden under the orange ribbon cable, near the screen.
  - ⓘ You may have to carefully lift the screen in order to reach this screw.

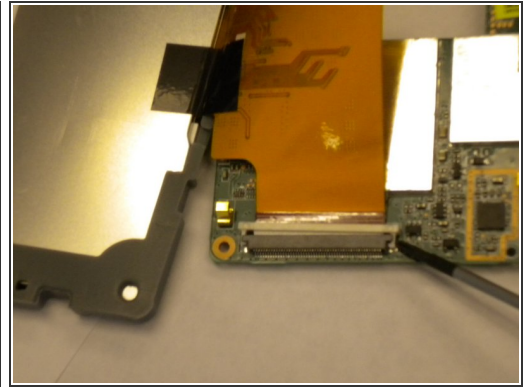
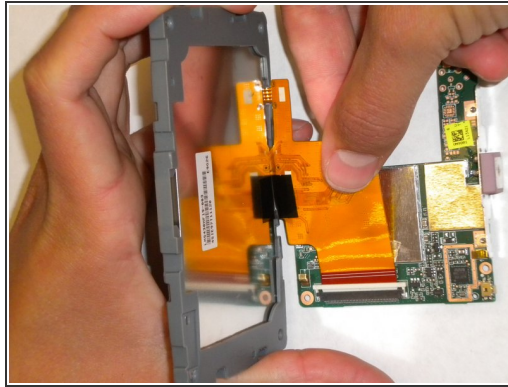
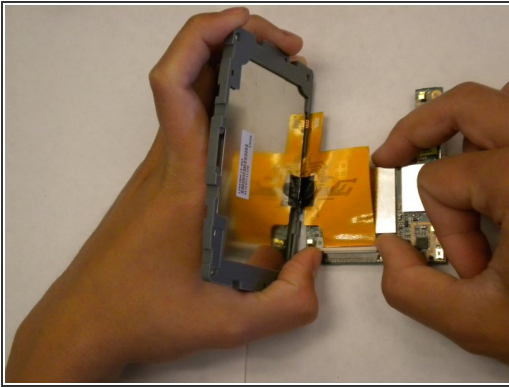


## Step 6



- Flip the screen and motherboard over.
- Gripping the plastic casing, disconnect the battery cable connector from the motherboard.
- Disconnect the speaker cable connector from the motherboard.
- Remove the motherboard and screen from the housing.

## Step 7 — Screen



- Using your thumbs or the flat end of a spudger, push back the white tabs on the display cable ZIF connector.
- Gently pull the orange display cable out of the ZIF connector.
- ⓘ The display cable should slide out easily, but it may still have some adhesive on the underside. If you feel resistance, gently lift up on the ribbon cable while pulling it from the socket.

To reassemble your device, follow these instructions in reverse order.