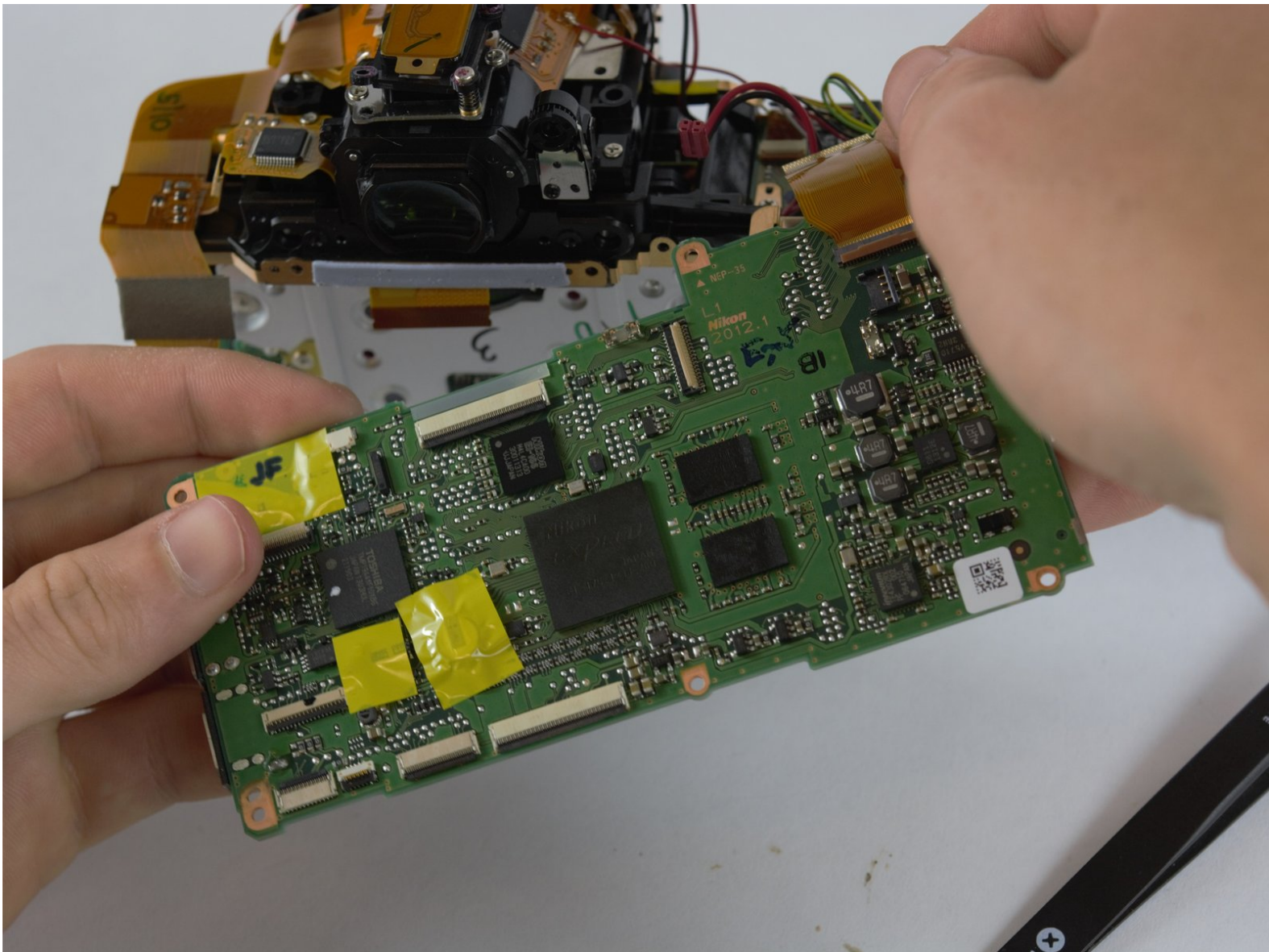




# Nikon D610 Motherboard Replacement

This guide will help you to replace the motherboard on your Nikon D610.

Written By: Daniel Eagan



# INTRODUCTION

This guide will demonstrate the steps required to replace a problematic motherboard on your Nikon D610.

---

## TOOLS:

- [Phillips #00 Screwdriver](#) (1)
  - [Desoldering Braid](#) (1)
  - [Soldering Workstation](#) (1)
  - [Spudger](#) (1)
-

## Step 1 — Battery



- First, power off the device.

## Step 2



- Set the camera so that it is sitting on its side.
- Open the battery compartment door by sliding the release button towards the lens.
- This will cause the door to "pop" open slightly

### Step 3



- Now lift open the battery compartment door.
- Push the yellow tab lock towards the center to release the battery.
- i This will cause the battery to jump up as there is a spring at the bottom.
- Pull straight out, slowly on the battery.
- ✦ Make sure you pay attention to which way the battery goes .

## Step 4 — Outer Case



- After removal of the battery. Pull the battery compartment door away from the lens.
- There are eleven Philips head screws that hold the bottom cover on, including a few inside the battery compartment.
- Remove all the screws and the bottom face should pop off easily.

## Step 5



- Then next step is removing the seven Philips #00 screws that hold the rear face plate on.
- There are screws hidden in three separate spots.
- One is under the rubber doors on the left side of the camera. the next one at the eye hole.
- The final one involves taking off the small dial that is about half an inch to the right of the eye hole.
- Removing this dial involves putting a spungder tool behind it and applying a gradual amount of pressure.

## Step 6



- The rear face plate will include the LCD display it separates from the body of the camera with a small tug.

**⚠ Do not pull to hard otherwise you risk breaking the ribbon wire that connects the controls and the screen.**

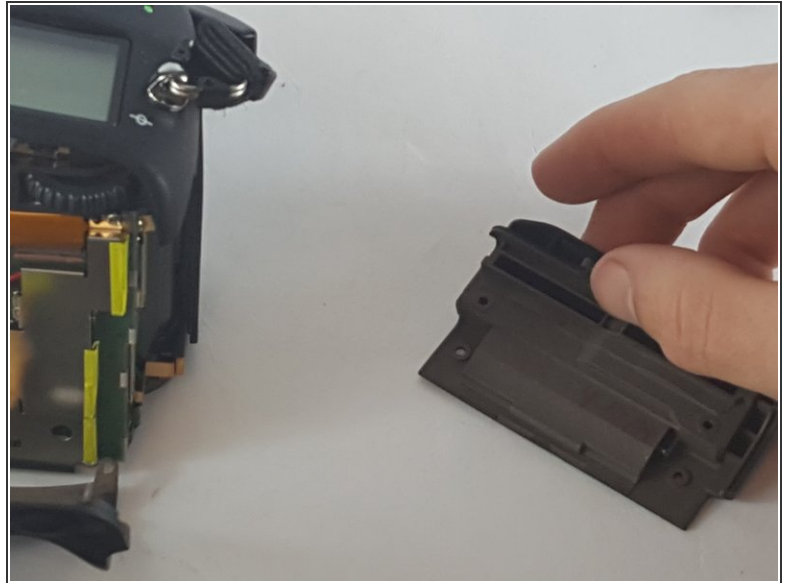
- Once there is enough space it will be possible to gently pull the ribbon cable out of their ports.

## Step 7



- The next piece to come off is the front plate and the red grip.
- The front plate is held on by 2 Phillips #00 screws on the front and two more beneath the flash bulb.
- Remove the two Phillips #00 screws holding on the grip and it slides off easily.
- ⓘ After removing the screws the face plate comes off by pulling it straight off to avoid damage.

## Step 8

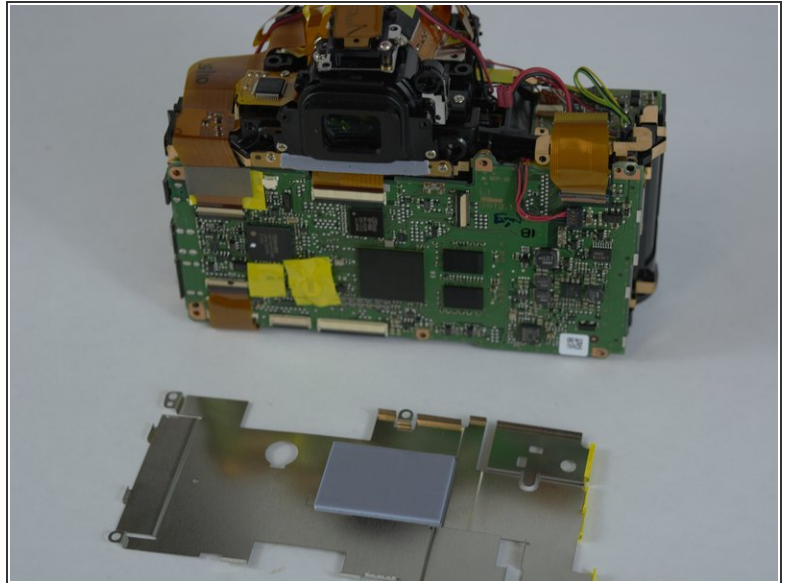
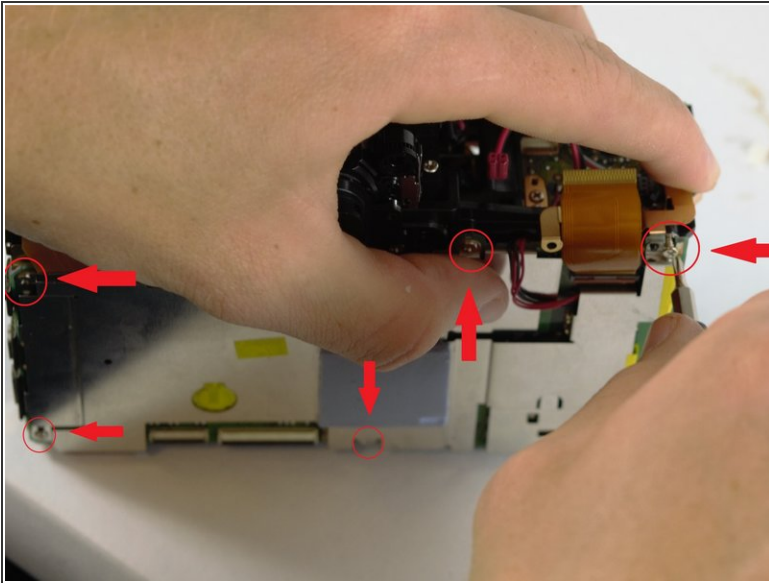


- It is now possible to remove the last three Philips #00 screws that are hidden under the memory card slot door.
- The screws come out and the cover comes straight off.
- The last cover plate is the top. The top is held on by two screws located just beneath the rim of the cover.

**⚠ The top should be pulled off very slowly. There are several electronic components that connect between the body and the top.**

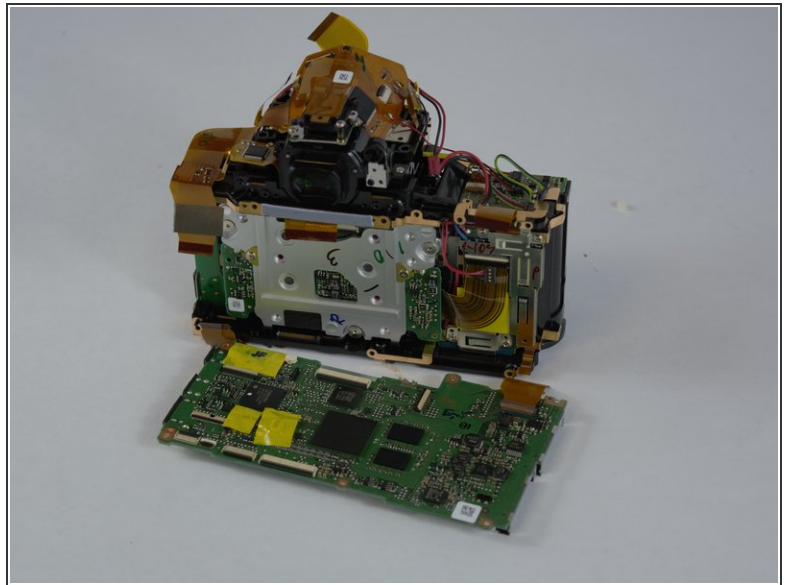
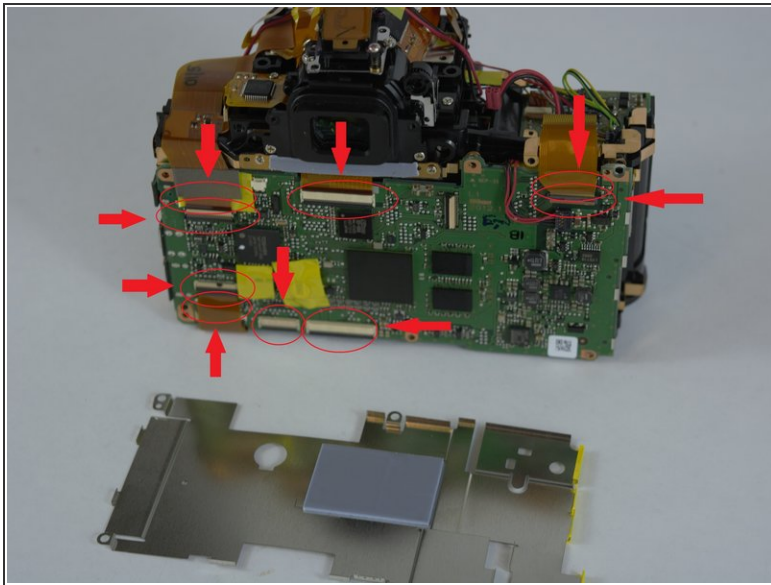
**i** There are three wires that need to be disconnected.

## Step 9 — Motherboard



- The rear side of the camera is where the motherboard is located. It is visible after you have taken off the rear face plate.
- Remove the shield that protects it from static first.
- This shield has six Philips #00 screws that are positioned around the edge of the shield.
- After removal of the screws the shield will come free from the motherboard.

## Step 10



- i** The six screws that were removed in the previous step also hold the motherboard in place.
- There are a few ribbon cables that connect to the motherboard to the rest of the camera with some of them hiding under other ribbon cables.
- !** Be very careful when removing the ribbon wires. If they break it can cause problems with needing more repairs.

To reassemble your device, follow these instructions in reverse order.