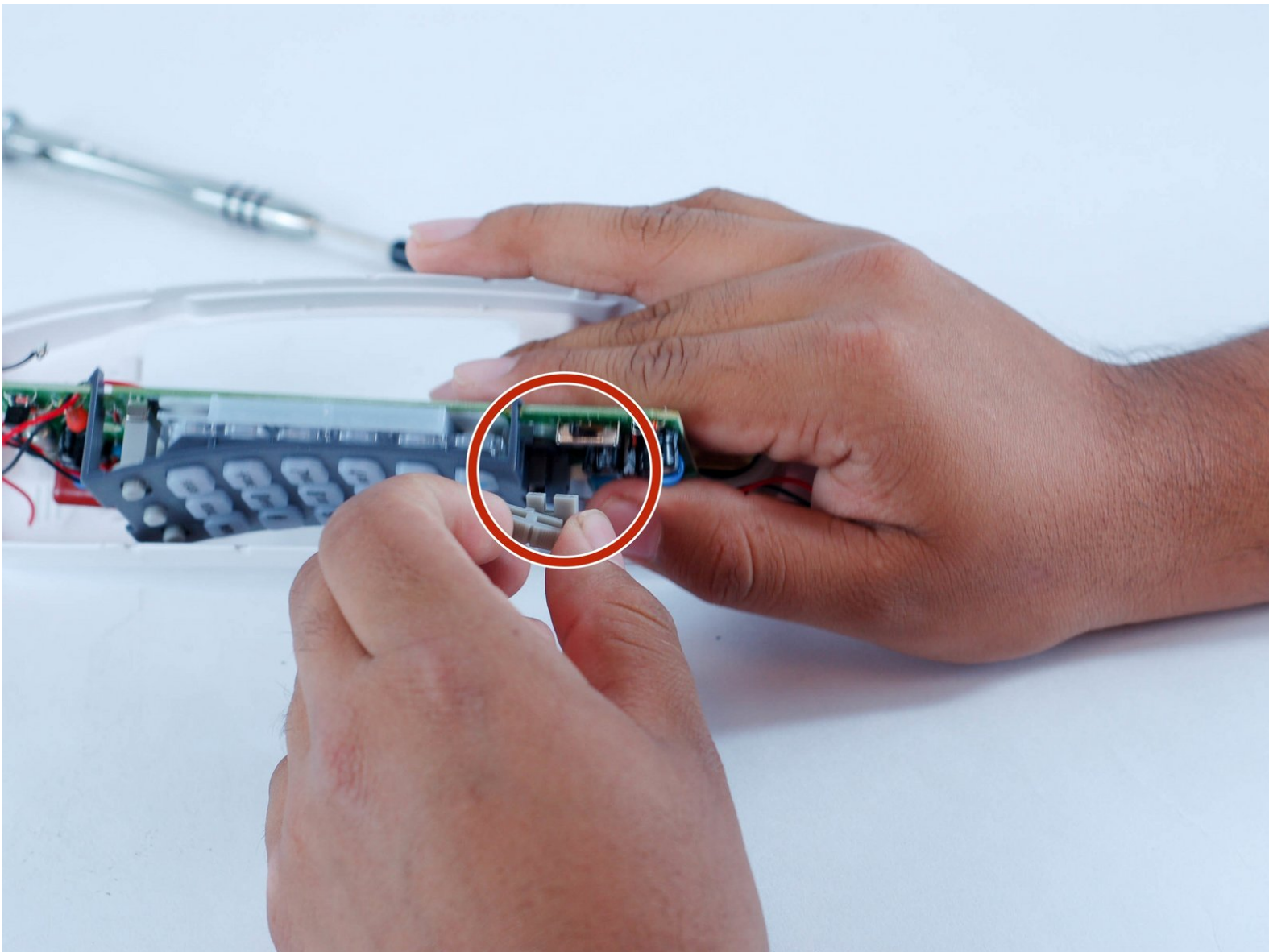




ATT Trimline 210M Key Pad Replacement

This guide will show you how to remove and replace the faulty keypad in the ATT Trimline 210M telephone.

Written By: Corey



INTRODUCTION

This guide will show you how to replace the keypad from the phone. You may need to replace it if the keypad doesn't work when attempting to dial.

TOOLS:


- [Metal Spudger](#) (1)
- [1/4" Nut Driver](#) (1)
- [JIS Driver Set](#) (1)

J1

Step 1 — ATT Trimline 210M Back Cover Disassembly



- Open up the phone with a metal spudger, sticking it in the bottom near the cord jack entry.

 Be careful with the amount of force you use, or the plastic may crack.

Step 2




- Pull up on the spudger while simultaneously pulling up the top shell of the phone.

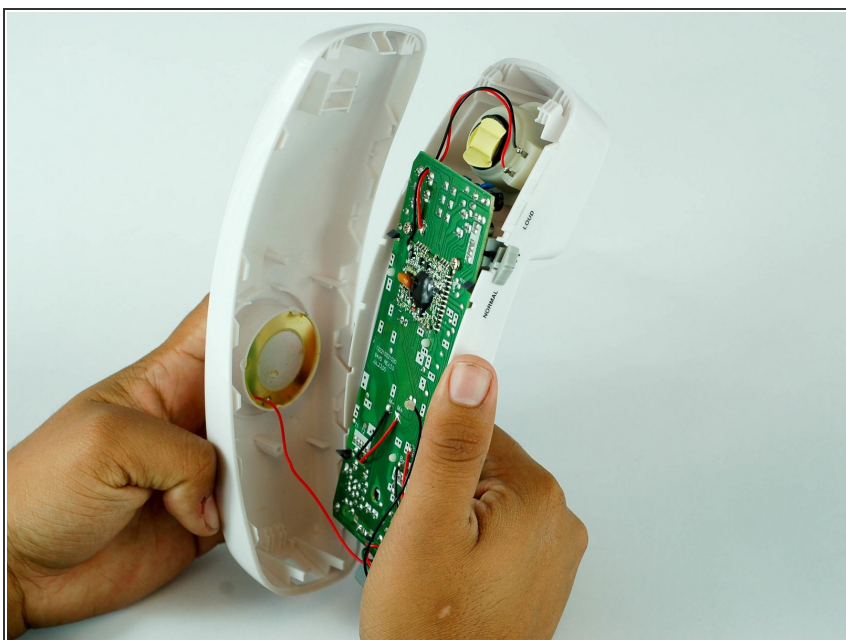
Step 3



- After unclipping the bottom half of the shell, pull upward from the position shown in the picture to detach the top half of the shell.

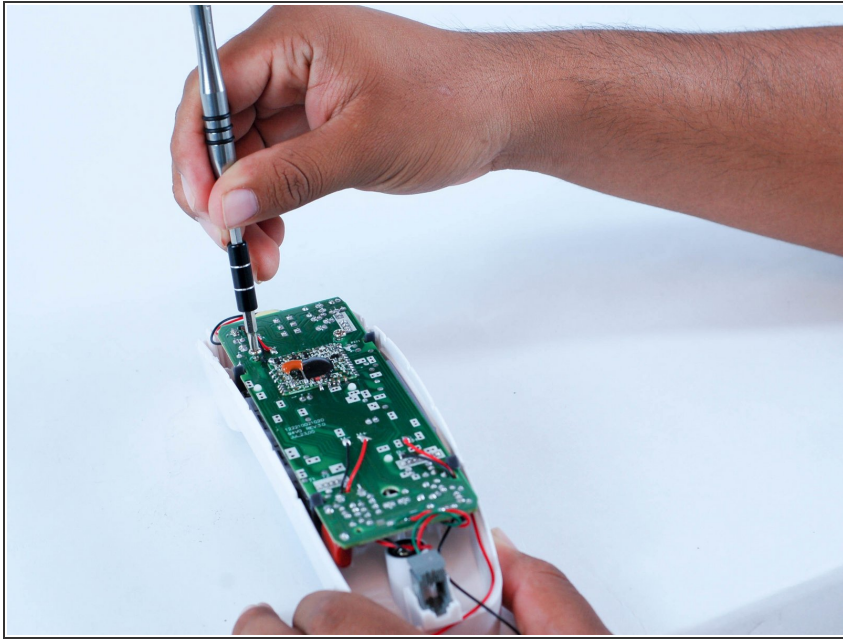
 The cord connecting the speaker is short, and may detach if not done carefully.

Step 4



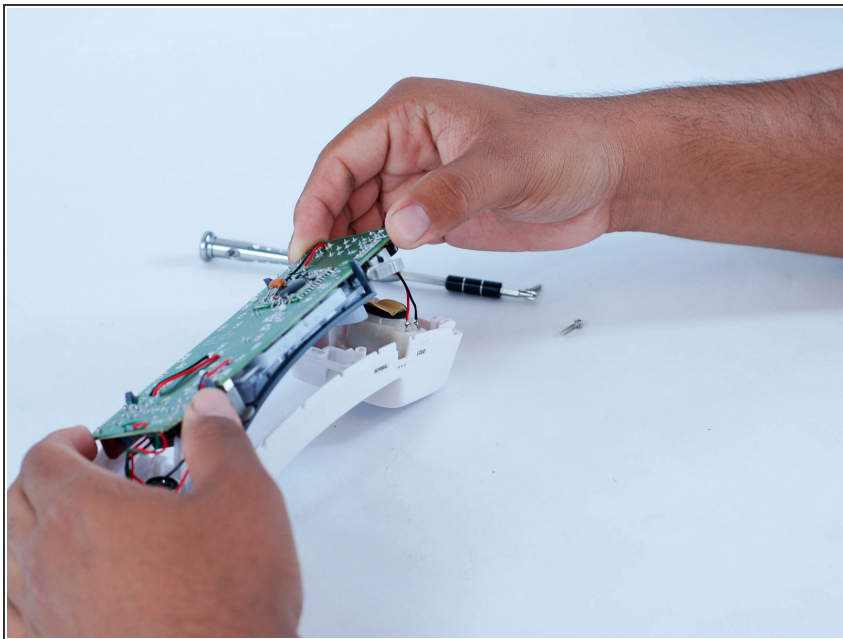
- You will have the motherboard and speaker exposed to you.

Step 5 — ATT Trimline 210M Motherboard Disassembly



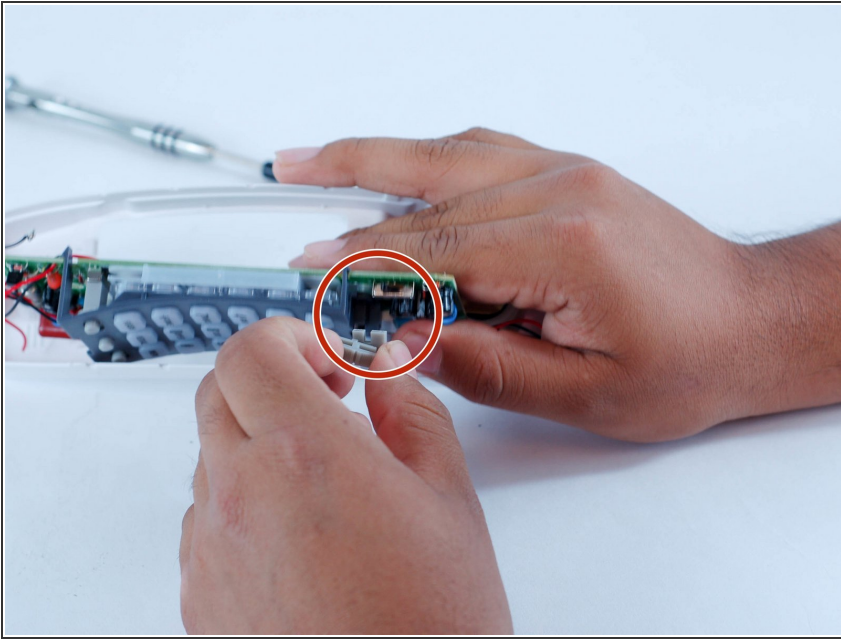
- Remove the two 10 mm screws using the 1/4" driver and a J1 Phillips screw head.

Step 6



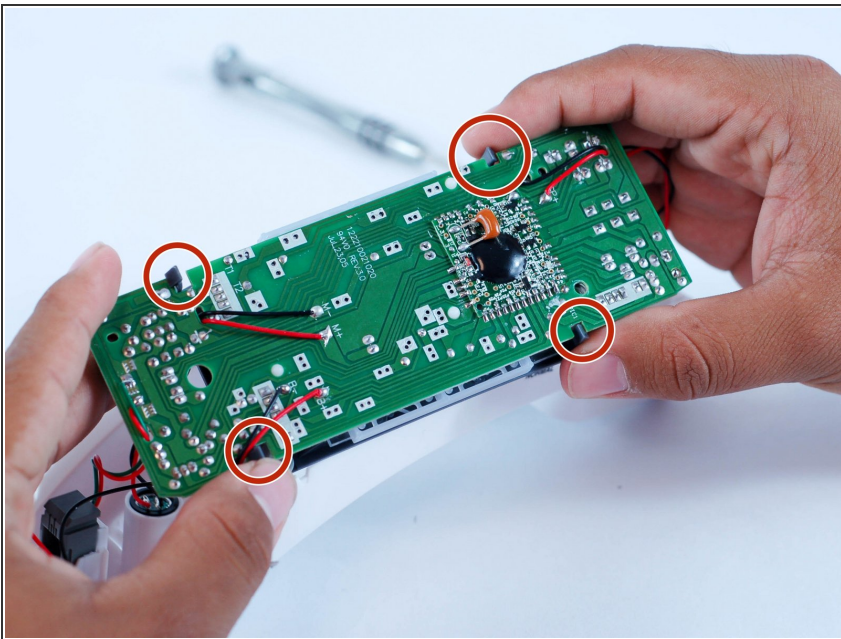
- Carefully move the motherboard up to remove it.

Step 7 — Key Pad



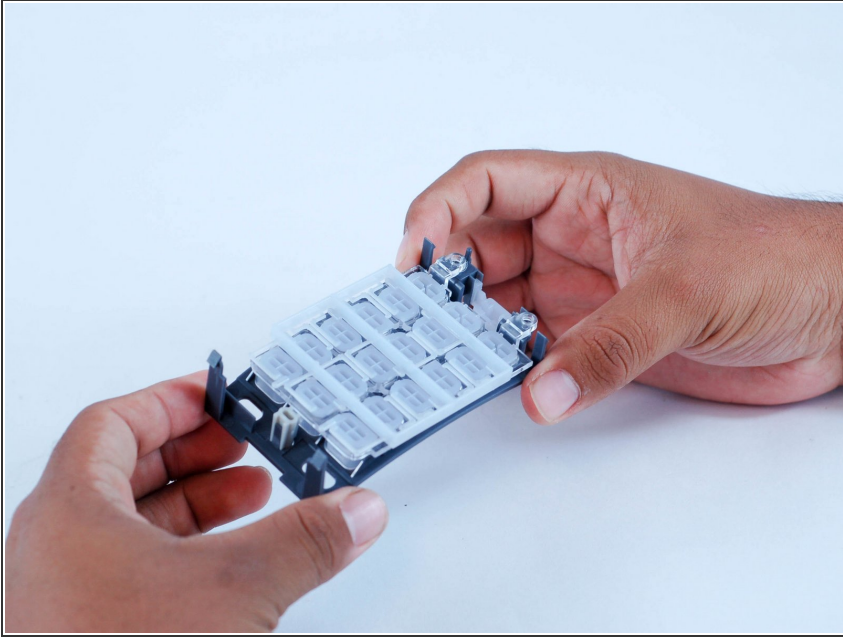
- Remove the speaker volume switch before trying to separate the keypad

Step 8



- Carefully push the black tabs back to dislodge the motherboard.

Step 9



- Remove keypad bundle.

To reassemble your device, follow these instructions in reverse order.