



Acer Aspire One D255E Keyboard Replacement

This guide will instruct you on how to replace the keyboard.

Written By: Brian



INTRODUCTION

The keyboard is the most essential input component on a laptop. Though this component is designed to have frequent usage either with old age or bad treatment this component may have to be replaced. You should read through the entire guide before performing the repair and should have all necessary tools readily available. You should also find a safe location to store the various screws taken out of the computer to ensure that they do not get mixed up or lost.



TOOLS:

- [Spudger](#) (1)
-

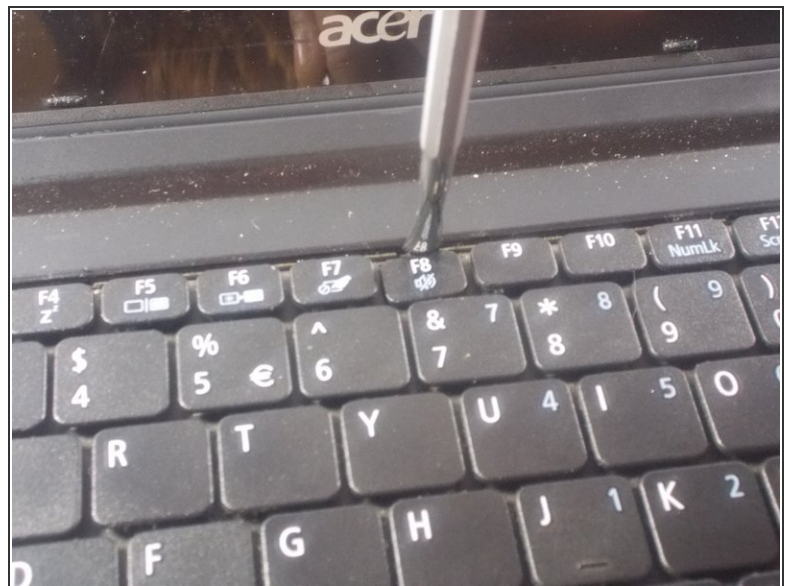
Step 1 — Keyboard



- Start by removing the battery found on the back of the device.

⚠ The battery must be removed in order to ensure the device does not have power! Make sure you do not skip this step!

Step 2



- Using plastic opening tools press down the 6 clips located around the keyboard.

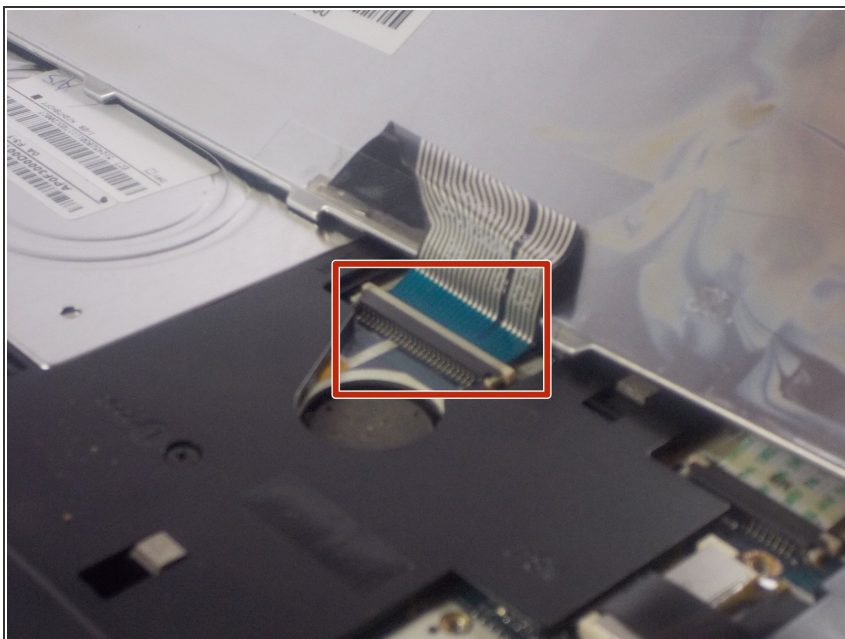
Step 3



- Using a plastic opening tool or spudger move the keyboard out of position.

- ⚠ There is a thin cable on the backside of the keyboard. Make sure when you move the keyboard out of position you do so slowly to prevent damage to this cable.
- ⓘ If you use a spudger it is recommended that you use a plastic spudger to reduce the chance of damaging any internal parts.

Step 4



- Using a spudger gently push the tab on the port forward then pull out the cable.
- ⚠ Be careful to do so as gently as possible. You do not want to damage the port.

To reassemble your device, follow these instructions in reverse order.

This document was generated on 2020-11-28 05:05:52 AM (MST).

