



# Nabi 2S Camera Replacement

Use this guide to remove the camera of your device.

Written By: Molly Scott



---

## INTRODUCTION

This guide will aid you in the process of removing the camera of the device. This is useful in replacing a broken or dis-functioning camera.

---



### TOOLS:

- [Phillips #0 Screwdriver](#) (1)
  - [iFixit Opening Tools](#) (1)
-

## Step 1 — Nabi 2S Disassembly



- Remove the red rubber case from the device.

## Step 2



- Make sure the screen is facing away from you and the back cover is facing you.
- Using a Phillips #0 Screwdriver, unscrew the 3mm screws counter-clockwise in each corner of the plastic back cover. It will be a total of four screws. The smaller case on the back cover is attached to the main cover so it will not need to be removed.

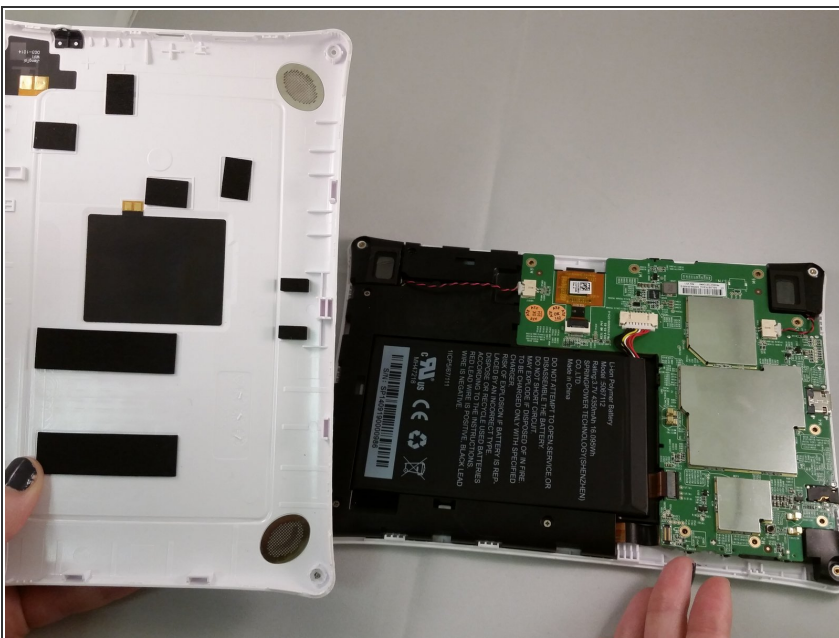


## Step 3



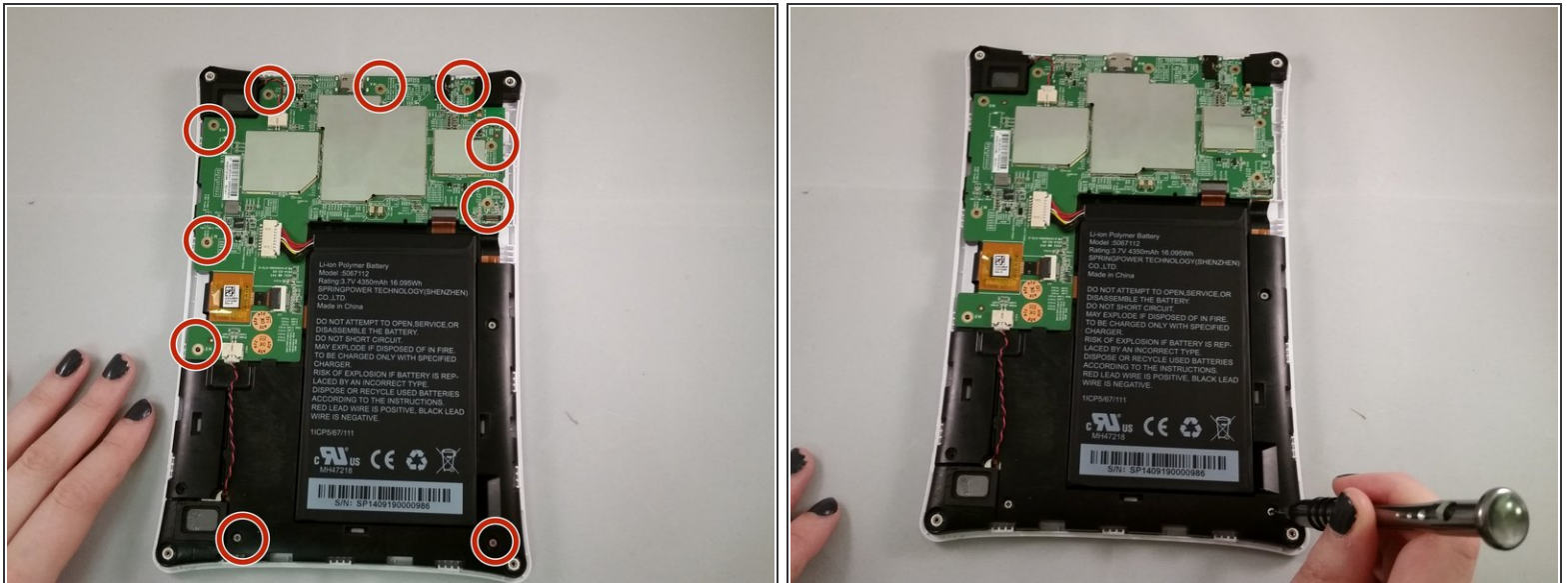
- Using the plastic opening tool, remove the case.
- ① Removing the case will take a bit of effort and force. We recommend using two hands and if possible another person to help. It will require some gusto.
- ① It is helpful to pry at the corners first to loosen the case.

## Step 4



- After the back case is loosened, remove it from the device to change or access the battery.

## Step 5 — Camera



- Unscrew the circuit board from the motherbaord by using a Phillips #0 screwdriver to unscrew the ten 4mm screws in a counter-clockwise rotation.

## Step 6



- The camera is attached to the circuit board and then tucked underneath. Gently grip the part attached to the circuit board and pull it up and away from the circuit.
- Gently slide the camera out from underneath the circuit board.
- ⓘ The camera is stuck to the device with adhesive tape so do not rapidly remove it.

To reassemble your device, follow these instructions in reverse order.