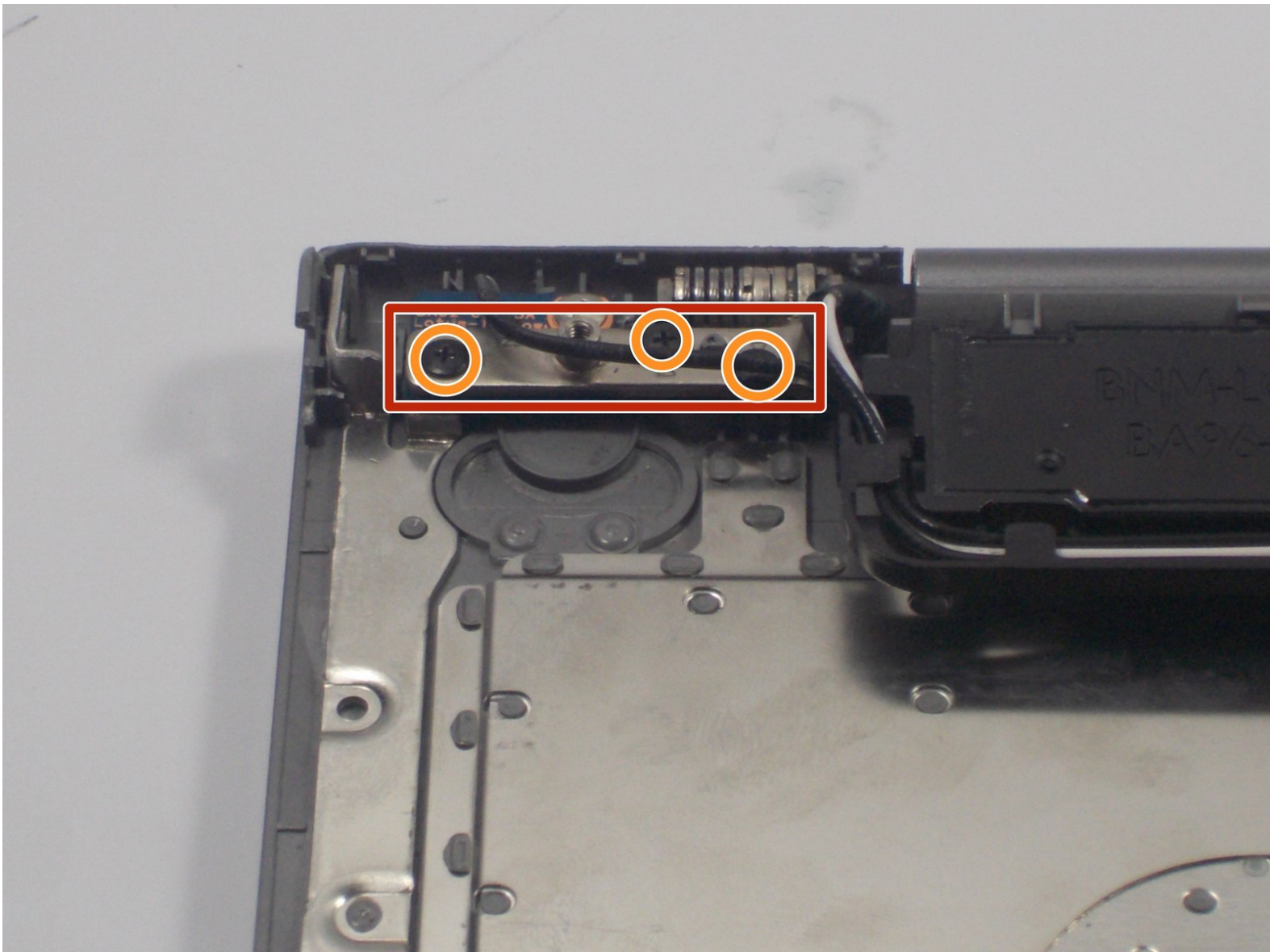




Samsung NP530U4BL Screen Replacement

This guide shows you how to replace a damaged or outdated screen .

Written By: Kayla Loycano



INTRODUCTION

In this guide you will be learning how to remove the screen from your Samsung NP5230U4BL laptop. This will enable you to replace a damaged or outdated screen to improve picture quality. Before attempting to remove the screen, be sure to ground yourself with an anti-static wrist strap and have a Philips #00 Screwdriver, as well as a Nylon pry tool on standby. Also carefully follow the given instructions including the cautionary warnings.



TOOLS:

- [Anti-Static Wrist Strap](#) (1)
- [4.5" long nose pliers](#) (1)
- [Phillips #00 Screwdriver](#) (1)
- [iFixit Opening Tools](#) (1)



PARTS:

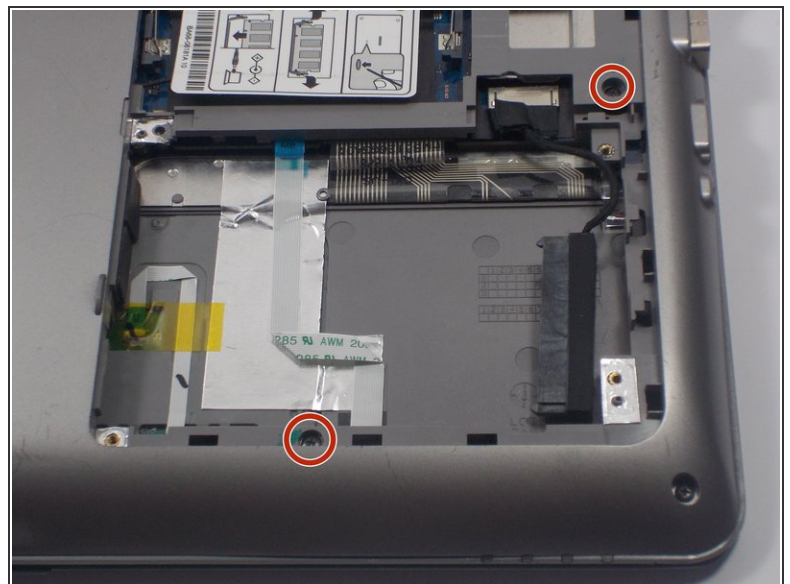
- [Screen Replacement](#) (1)

Step 1 — Removing Back Cover



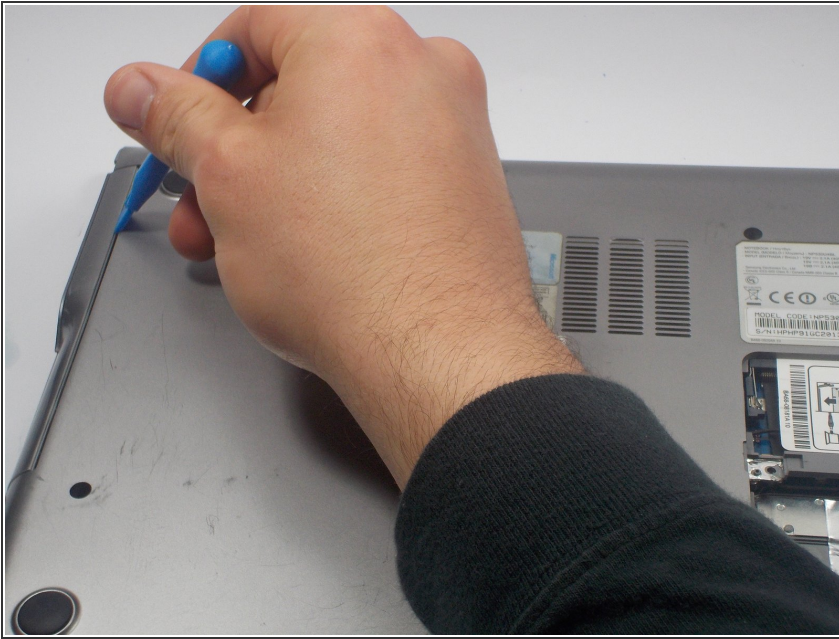
- ⚠ Before disassembling your computer, make sure it is powered off.
- Using the Phillips #00 screwdriver, remove all ten 1.5 mm screws from the back cover of the laptop.
- ℹ Removing these screws allows you to take off the panel on the right side of the laptop.

Step 2



- Using your dominant hand, pinch the tab on the back panel to the right and remove it.
- Using the Phillips #00 screwdriver, remove the two 1.5 mm screws that are under the panel.
- ℹ You are now able to detach the entire back cover of the laptop. You can store these screws in the same area as the others because they are all 1.5 mm, identical parts.

Step 3



- ⓘ Be sure that you are looking at the laptop so that the spine connecting the base to the screen is at the top.
- ⚠ When using the plastic opening tool, be careful not to rip or pull too hard to disengage the prongs connecting the back cover to the base. Moving slowly will make this task easier and less likely to cause damage to your machine.
- Using the plastic opening tool, start in the upper-left hand corner of the laptop and pry horizontally to the upper right-hand corner.

Step 4



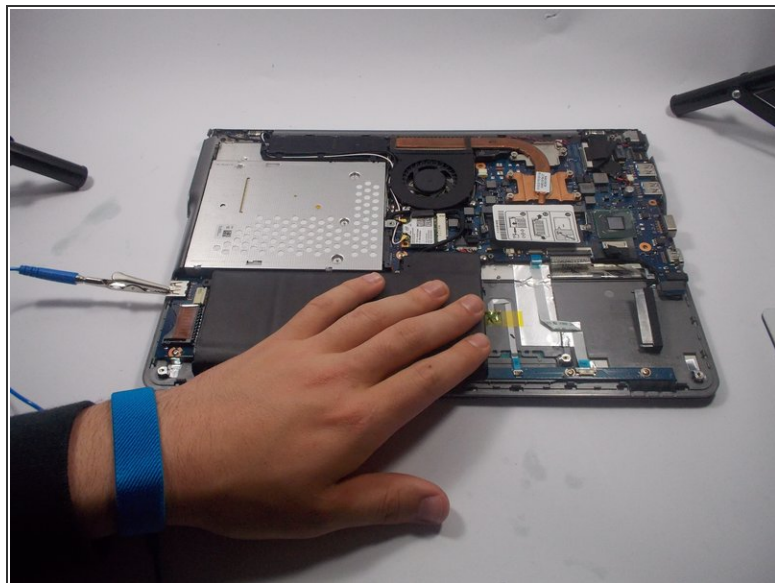
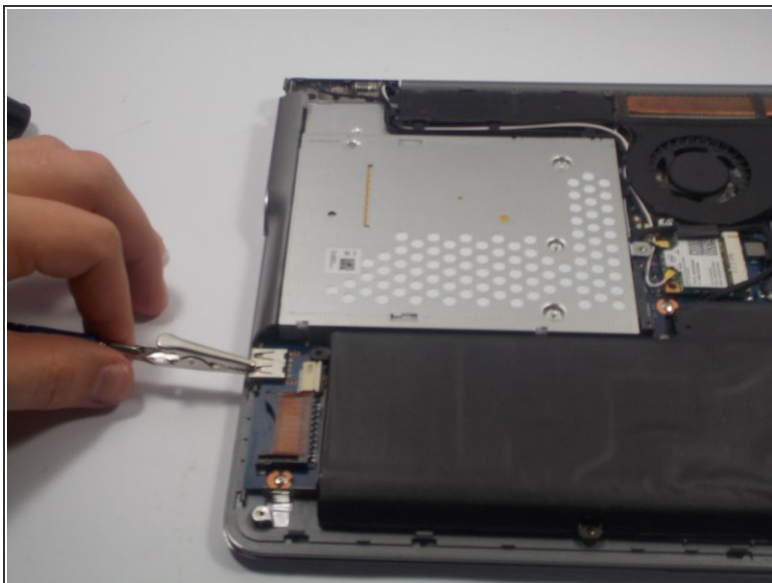
- Again starting in the upper left-hand corner, pry down vertically towards the bottom left-hand corner of the laptop.
- ⓘ You have now disengaged two of the four sides holding the back cover onto the base.


Step 5



- Using your dominant hand, grasp the left side of the back cover and gently pull it up. This should disengage the prongs on the bottom and right edge of the base.
- ⚠ The right side of the cover has openings that go around the USB ports, the HDMI port, the Ethernet port, the VGA port, and the headphone jack. Use caution when disengaging the prongs around these parts.
- ℹ After completing this step the entire back cover should be separated from the base, and the inside of the laptop should be revealed.

Step 6



 All steps following the removal of the back cover should be completed while wearing an Anti static bracelet. This prevents ESD (electrostatic discharge). ESD can damage nearly every part on the inside of your computer.

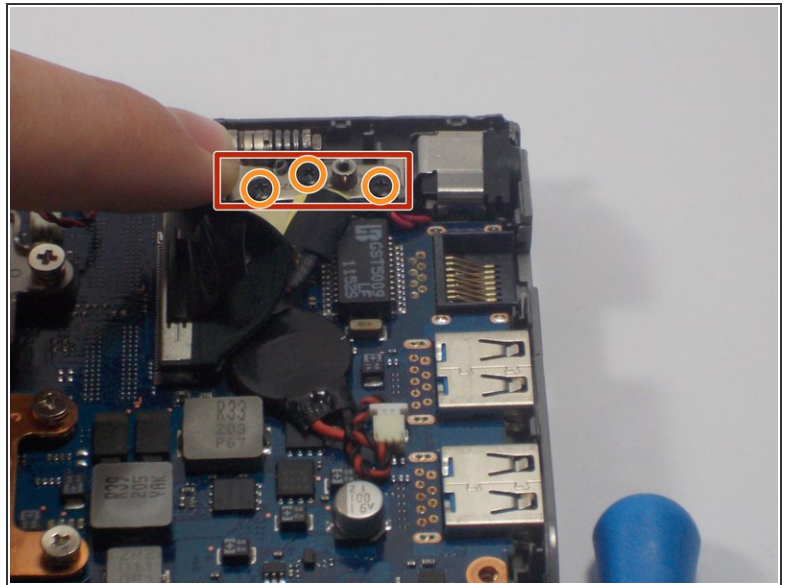
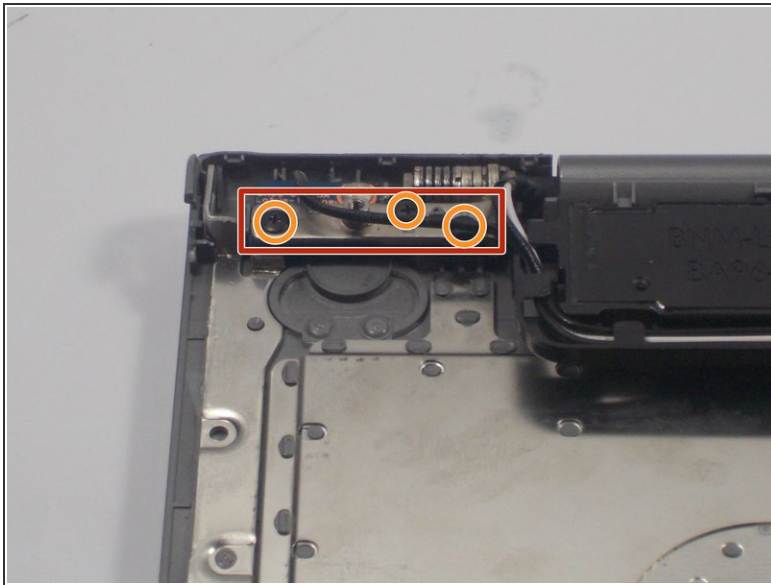
Step 7 — CD Drive



- Press down on the drive with your left thumb and slowly slide it out of place. The drive should slide all the way out of the machine until it is detached.

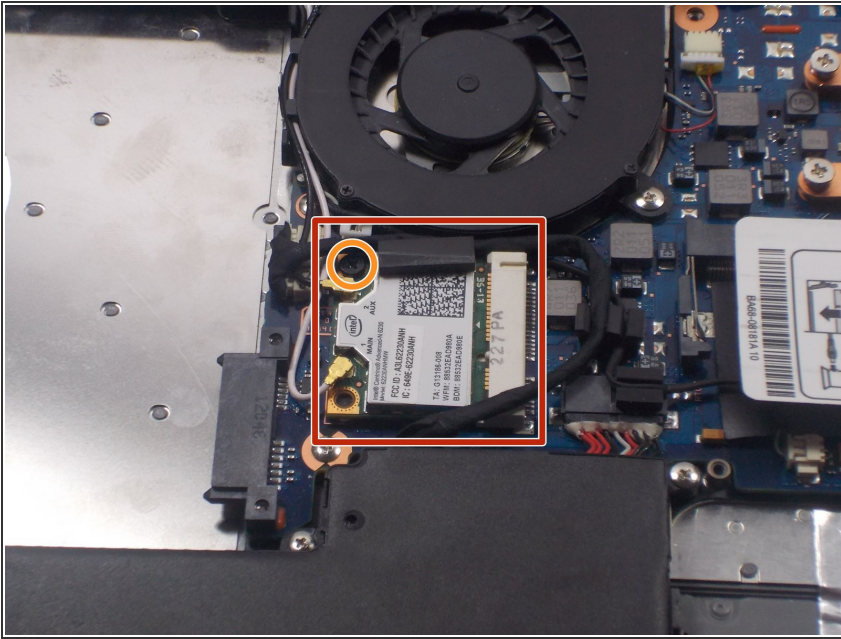
⚠ Be sure to slide the CD Drive, do not lift it. Lifting the CD drive could damage small pins and other sensitive parts near the CD drive.

Step 8 — Screen



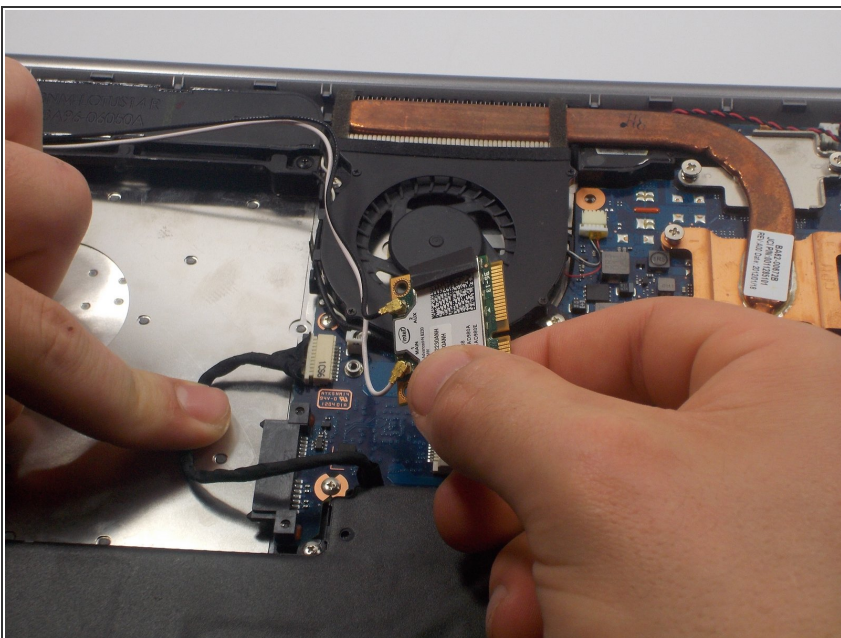
- On the upper edge of the computer is a spine connecting the base to the screen. The screen is connected to the base by two rectangular, silver hinges located at the right and left edge of the spine.
- On each hinge are three, black 1.5 mm screws. Using the Phillips #00 screwdriver, remove these six screws.

Step 9



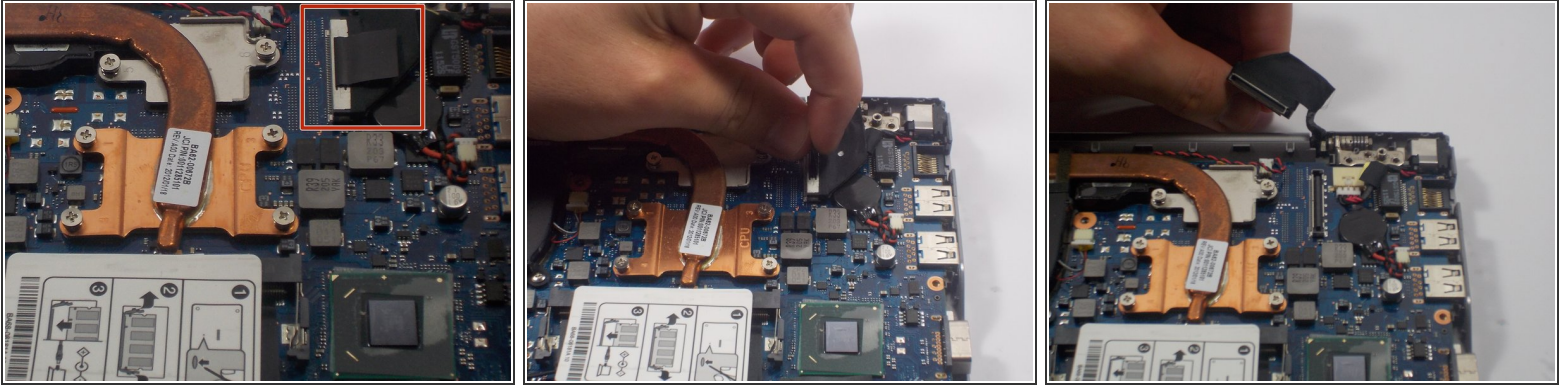
- Directly to the right of the CD Drive and below the fan there is a circuit board that has an Intel label on it.
- On this circuit board is a single, black 1.5 mm screw. Using the Phillips #00 screwdriver, remove the screw.

Step 10



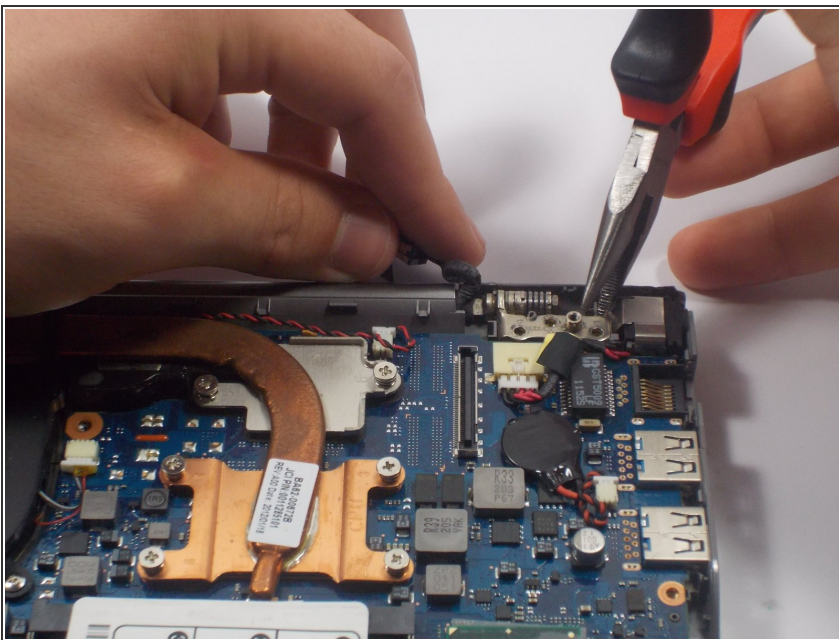
- Using your dominant hand, carefully lift the circuit board vertically out of the base.
- ⚠ The circuit board is covered by a thick black wire. Be sure to move this wire out of the way before lifting the circuit board.
- ⚠ The circuit board is attached to the screen by two thin wires, one white and one black. These should stay attached to the circuit board at all times. Do not try to remove these wires from the circuit board or the screen.

Step 11



- Using the black tab on top of the IDE plug, carefully lift the plug vertically upward until it is disengaged from the socket. This piece is attached to the base by a black wire, and can be left here for the duration of the replacement.

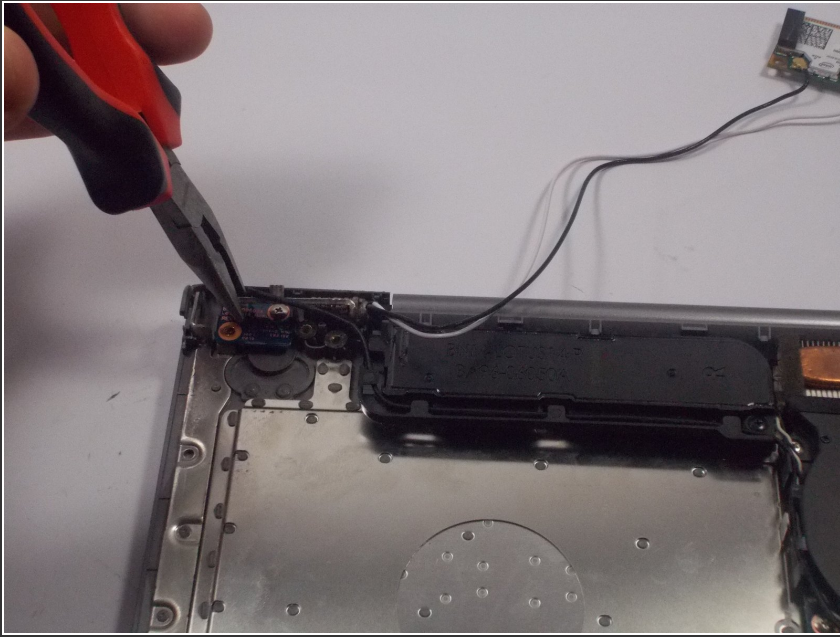
Step 12



- Using a pair of long-nose pliers, and starting in the upper right-hand corner of the screen, grab onto the hinge and lift it upward, similarly to how you lift to open a laptop.

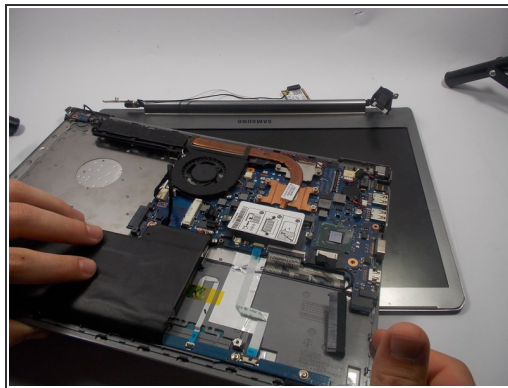
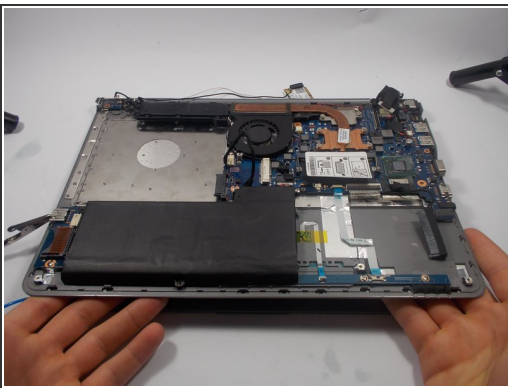
⚠ It will require a little bit of torque in order to lift the hinge, do not be afraid to apply the correct amount of pressure.

Step 13



- Using a pair of long-nose pliers, grab onto the hinge in the upper left-hand corner of the screen and pull it upward, similarly to how you open a laptop.

Step 14



- i** Once the hinges are lifted, there are no longer any parts attaching the base to the screen.
- Slide both hands between the base and the screen.
 - Carefully, lift the whole base until it is at an angle of about 60 degrees.
 - To remove the base from the screen, slide the base back towards yourself.
- !** On the left side of the computer is a wire that goes around the hinge. Be careful to slide the screen out in a way that will avoid the hinge being caught on this wire.

To reassemble your device, follow these instructions in reverse order.