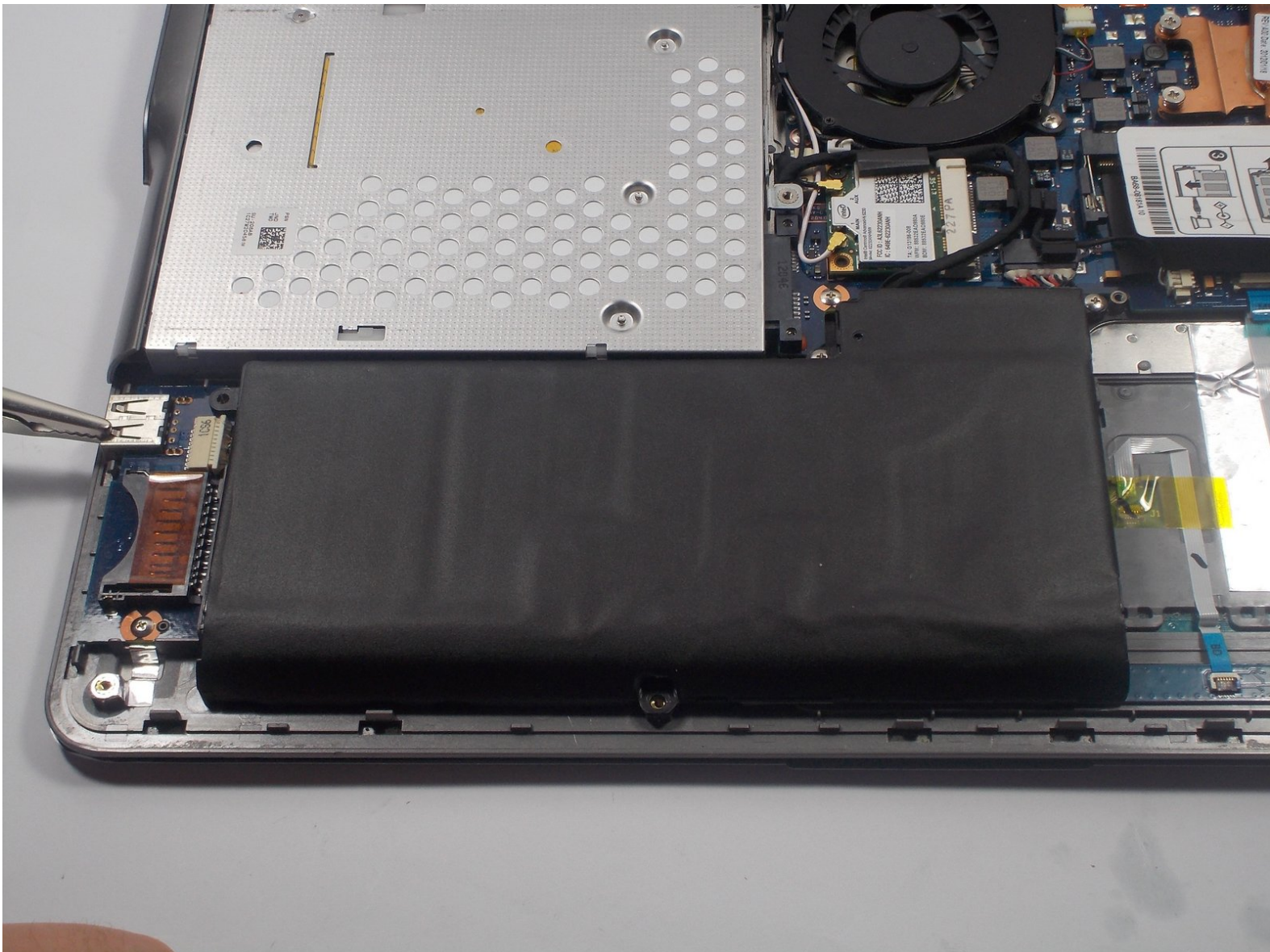




# Samsung NP530U4BL Battery Replacement

This guide teaches you how to safely remove and replace your battery to improve battery life.

Written By: Kayla Loycano



---

## INTRODUCTION

In this guide you will be learning how to remove the battery from your Samsung NP5230U4BL laptop. This will enable you to replace a damaged damaged or outdated battery to potentially improve battery life. Before attempting to remove the battery, be sure to ground yourself with an anti-static wrist strap and have a Phillips #00 Screwdriver, as well as a Nylon pry tool on standby. Also carefully follow the given instructions including the cautionary warnings.



### TOOLS:

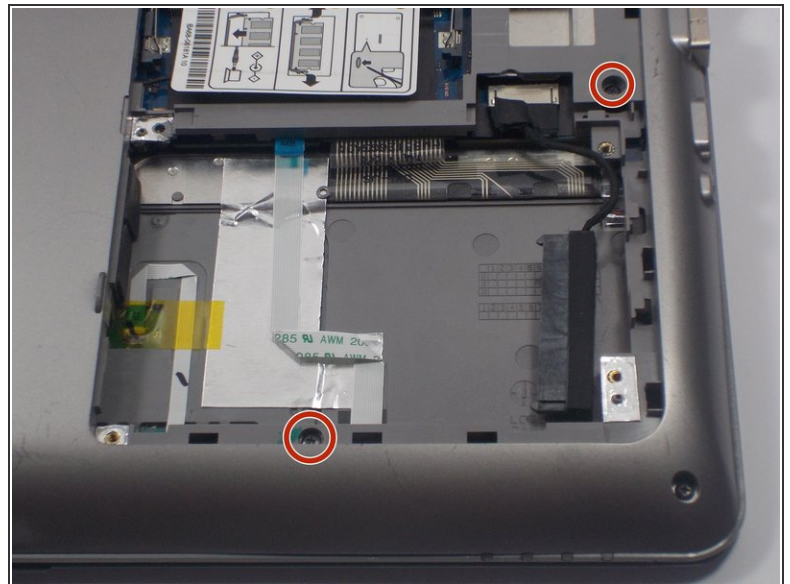
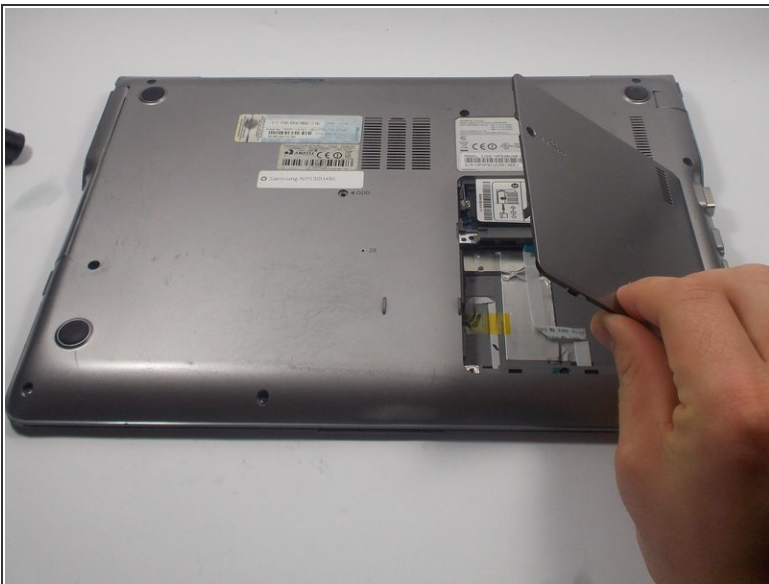
- [Anti-Static Wrist Strap](#) (1)
  - [Phillips #00 Screwdriver](#) (1)
  - [iFixit Opening Tools](#) (1)
-

## Step 1 — Removing Back Cover



- ⚠ Before disassembling your computer, make sure it is powered off.
- Using the Phillips #00 screwdriver, remove all ten 1.5 mm screws from the back cover of the laptop.
- ⓘ Removing these screws allows you to take off the panel on the right side of the laptop.

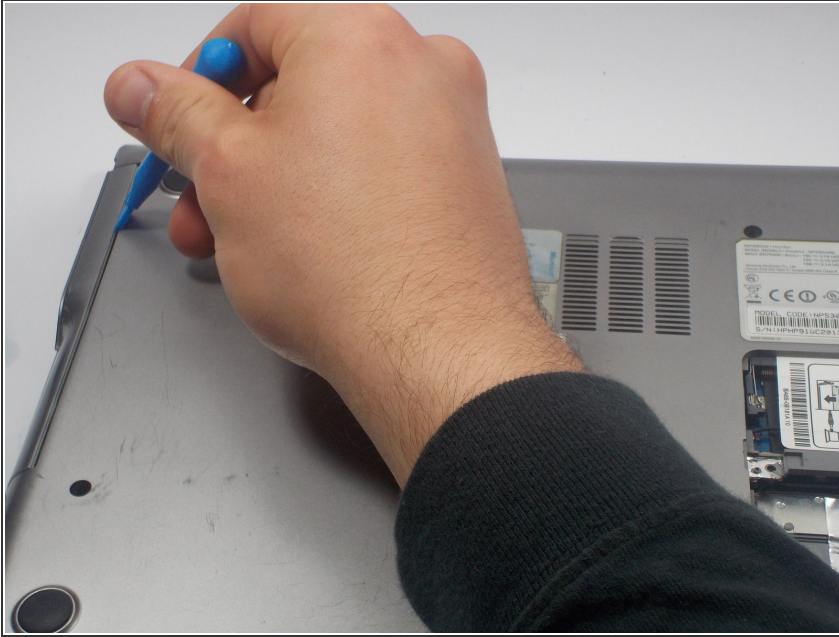
## Step 2



- Using your dominant hand, pinch the tab on the back panel to the right and remove it.
- Using the Phillips #00 screwdriver, remove the two 1.5 mm screws that are under the panel.
- ⓘ You are now able to detach the entire back cover of the laptop. You can store these screws in the same area as the others because they are all 1.5 mm, identical parts.



### Step 3



- i Be sure that you are looking at the laptop so that the spine connecting the base to the screen is at the top.
- ! When using the plastic opening tool, be careful not to rip or pull too hard to disengage the prongs connecting the back cover to the base. Moving slowly will make this task easier and less likely to cause damage to your machine.
- Using the plastic opening tool, start in the upper-left hand corner of the laptop and pry horizontally to the upper right-hand corner.

### Step 4



- Again starting in the upper left-hand corner, pry down vertically towards the bottom left-hand corner of the laptop.
- i You have now disengaged two of the four sides holding the back cover onto the base.

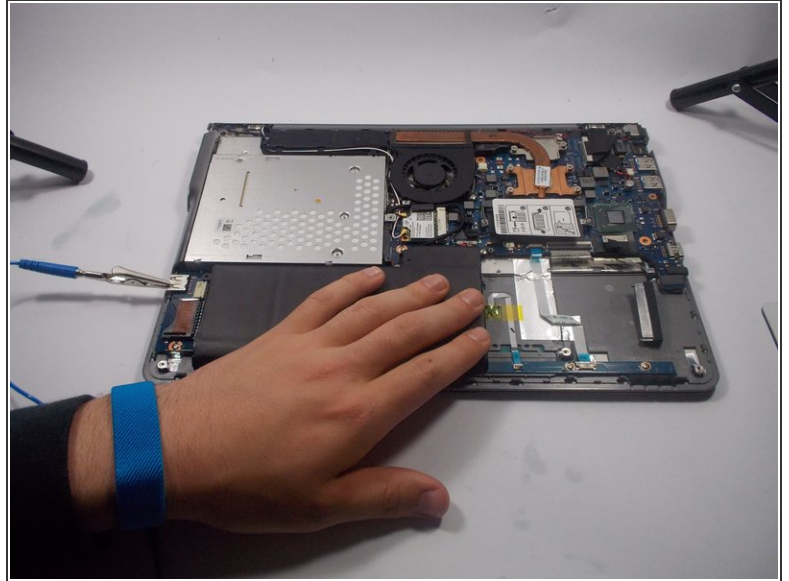
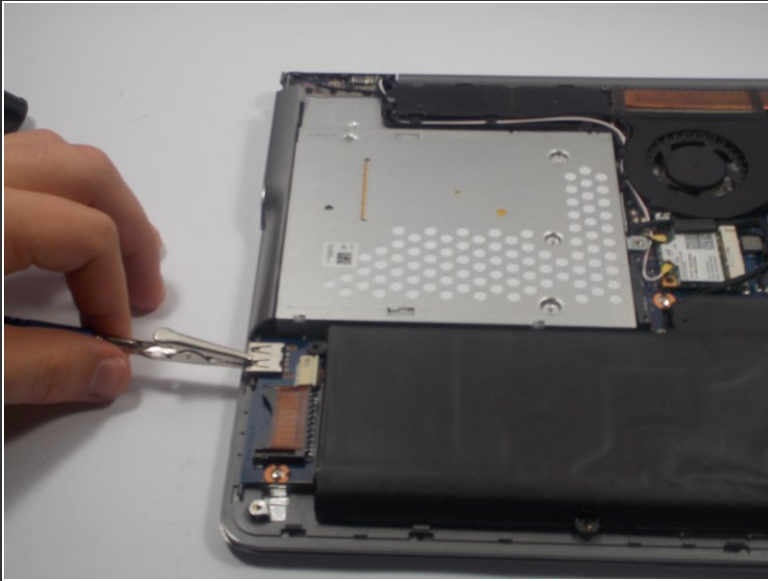
## Step 5




- Using your dominant hand, grasp the left side of the back cover and gently pull it up. This should disengage the prongs on the bottom and right edge of the base.
- ⚠ The right side of the cover has openings that go around the USB ports, the HDMI port, the Ethernet port, the VGA port, and the headphone jack. Use caution when disengaging the prongs around these parts.
- ℹ After completing this step the entire back cover should be separated from the base, and the inside of the laptop should be revealed.

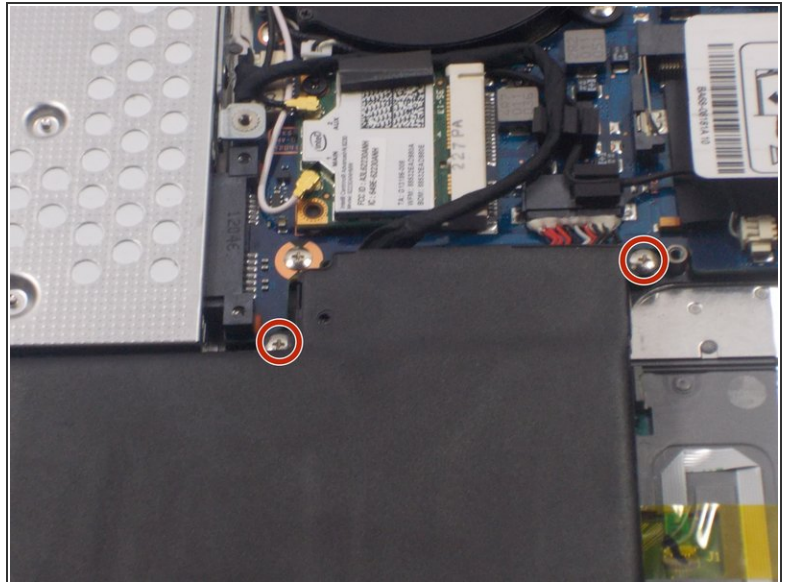


## Step 6



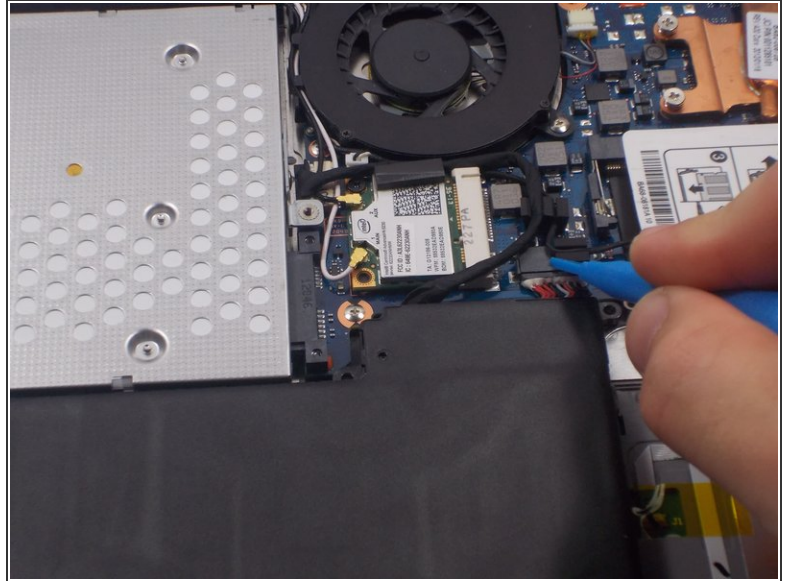
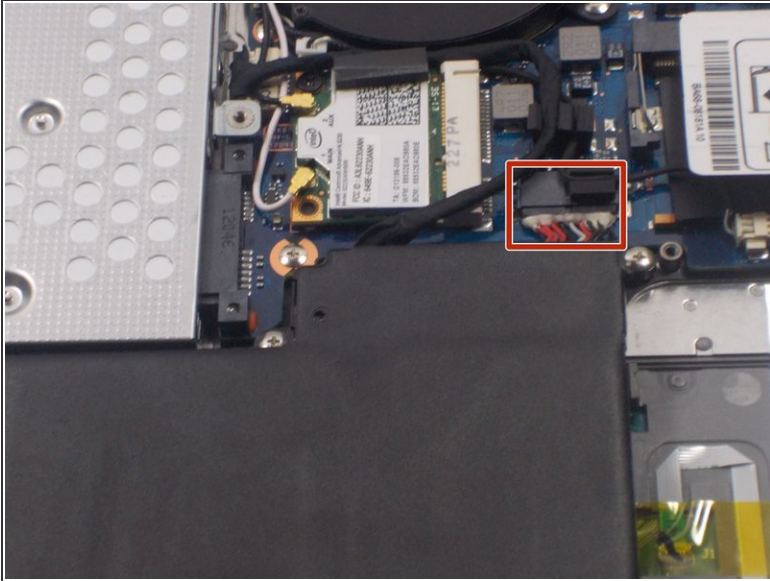
 All steps following the removal of the back cover should be completed while wearing an Anti static bracelet. This prevents ESD (electrostatic discharge). ESD can damage nearly every part on the inside of your computer.

## Step 7 — Battery



- On each side of the portion that is jutting out, there is one, silver 1.5 mm screw. Using the Phillips #00 screwdriver, remove these two screws.

## Step 8



- Using the plastic opening tool, carefully separate the battery from the plug that connects the battery to the circuit board.
- ⚠ Use caution when removing the battery from the plug. Damaging any of the wires attached to the plug could affect the battery's functionality.

## Step 9



- Using your dominant hand, carefully lift the battery vertically out of place, making sure to handle with care and to not bump any other parts of the computer.

To reassemble your device, follow these instructions in reverse order.