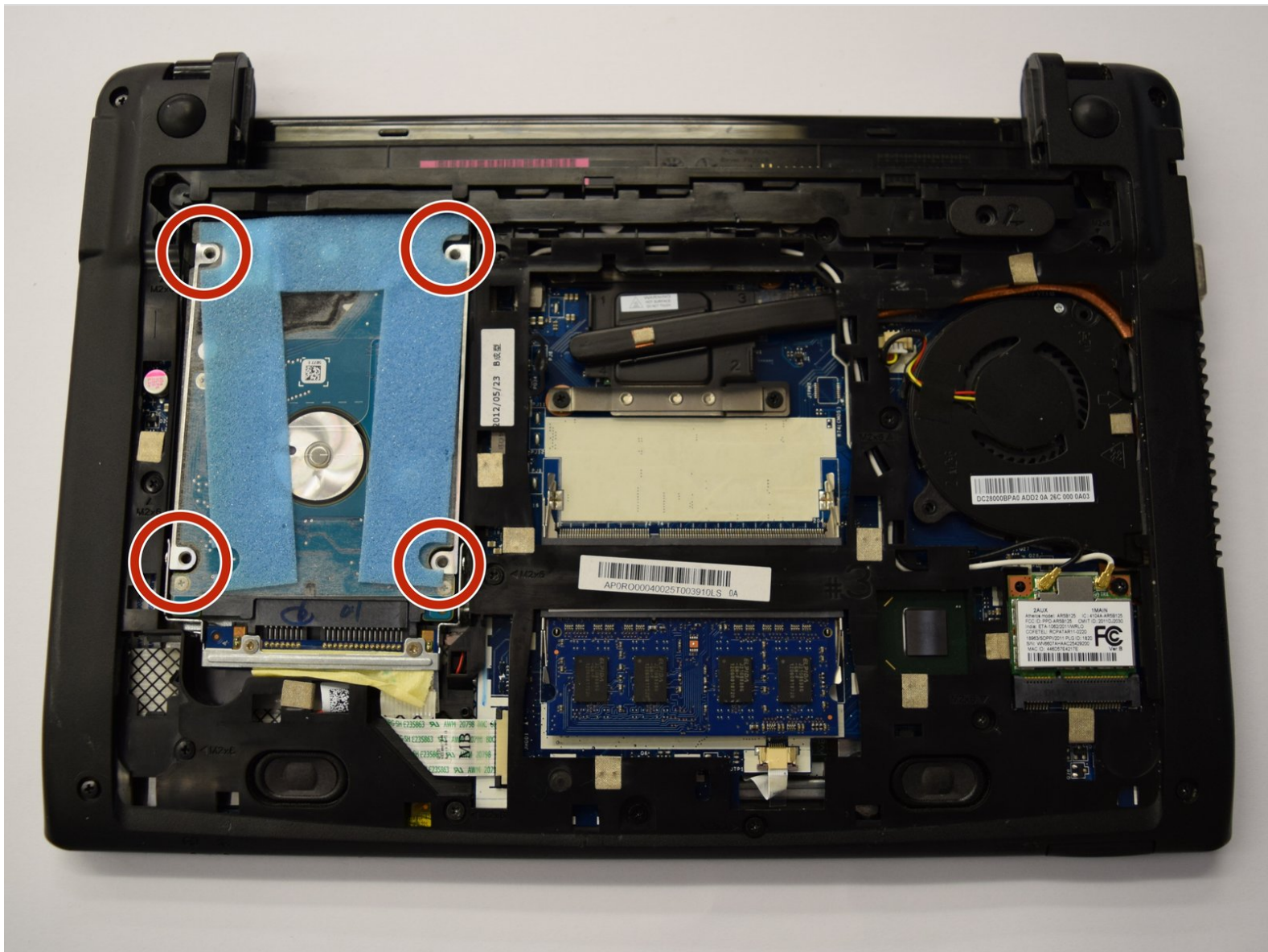




# Acer Aspire One AO756-2623 Hard Drive Replacement

The Acer Aspire One's hard drive is a large component in the bottom of the laptop connected by one flat wire. It contains the laptop's memory and can be prone to failure, so replacement and upgrading are frequently necessary

Written By: Colin Rodwell



---

## INTRODUCTION

A dysfunctional hard drive can completely ruin the life of an otherwise functional computer; therefore, if any problems arise regarding the hard drive, it should be fixed or replaced. Removing the hard drive requires the battery and back cover to be removed and then only a few screws need to be removed to completely take out the hard drive.



### TOOLS:

- [Phillips #0 Screwdriver](#) (1)
  - [Flathead 3/32" or 2.5 mm Screwdriver](#) (1)
-

## Step 1 — Battery



- Orient the ACER Aspire One to where the bottom of the laptop is facing upward as shown in the picture.

## Step 2




- Locate the circular slot positioned at the bottom right of the battery.



### Step 3



- Insert a spudger and slide the tab to the right.

 When working with electronics, it's important to choose a tool that's ESD-safe to avoid accidental damage to the device. The regular black nylon spudger or a plastic opening tool should be used whenever possible.

- Hold the tab in the right-hand position and firmly push or pull the battery upward to remove it from the laptop.

### Step 4 — Back Cover



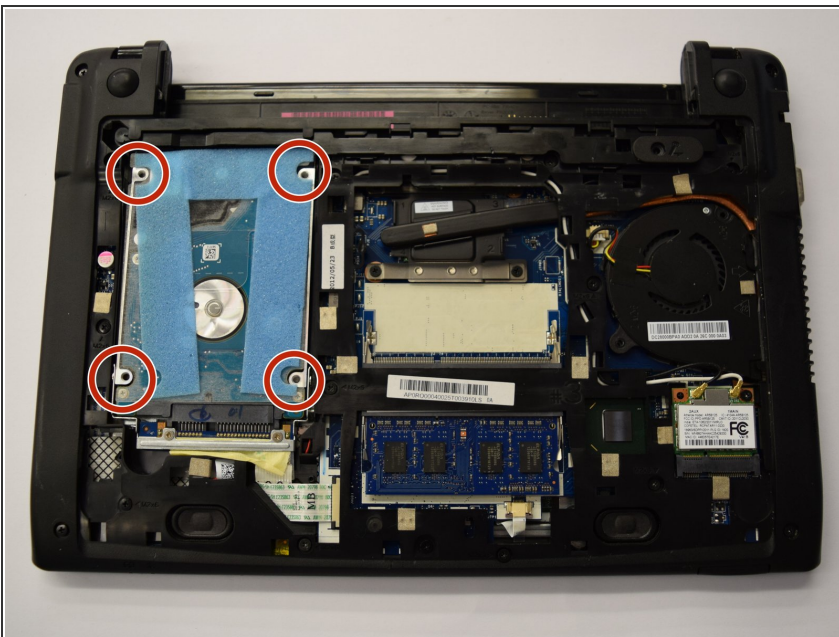
- Locate the single 6 mm Phillips screw in the lower middle of the back plate.
- Remove the screw using a Phillips #0 Screwdriver.

## Step 5



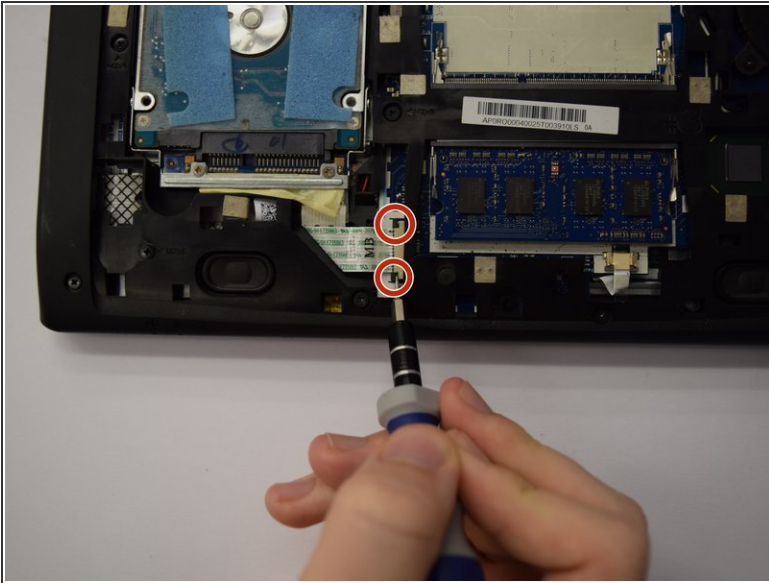
- Slide the back plate downward to remove it from the laptop.

## Step 6 — Hard Drive



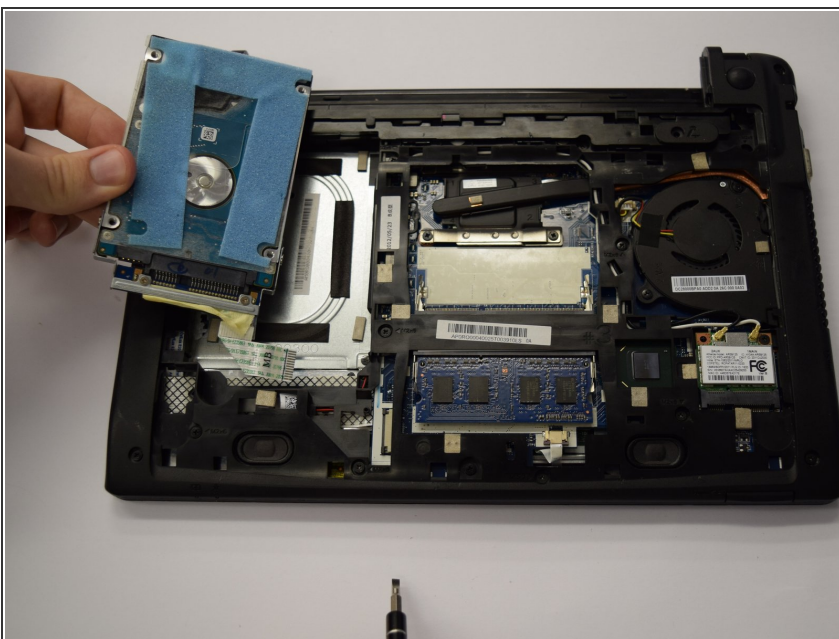
- Locate the four 6 mm Phillips screws pictured necessary to remove the hard drive.
- Remove all four of the screws using a Phillips #0 Screwdriver.

## Step 7



- Locate the two tabs that keep the hard drive ribbon cable connected to the laptop.
- Using a spudger, gently push in the indicated tabs.
- While holding down the tabs, slide the ribbon cable to the left to remove it from the laptop.

## Step 8



- Remove the hard drive by pulling it straight out.



To reassemble your device, follow these instructions in reverse order.