



# Grace Digital Mondo Main Speaker Replacement

Disassemble, replace, and rewire a new main speaker.

Written By: Freddy Yaniz



---

## INTRODUCTION

The replacement for your device's main speaker requires a little extra effort than the other components in the device, but is still easily manageable with a soldering kit. With the little amount of desoldering required for this project, a YouTube video undergoing basic safety precautions and soldering kit use is recommended.

---

### TOOLS:

- [Phillips #1 Screwdriver](#) (1)
  - [Metal Spudger](#) (1)
  - [Soldering Iron](#) (1)
  - [Spudger](#) (1)
-

## Step 1 — Front Panel



- Remove (2) screws (14 mm) with a PH1 screwdriver on the device.
- There is one screw on the back left, and another just below it on the bottom of the device.

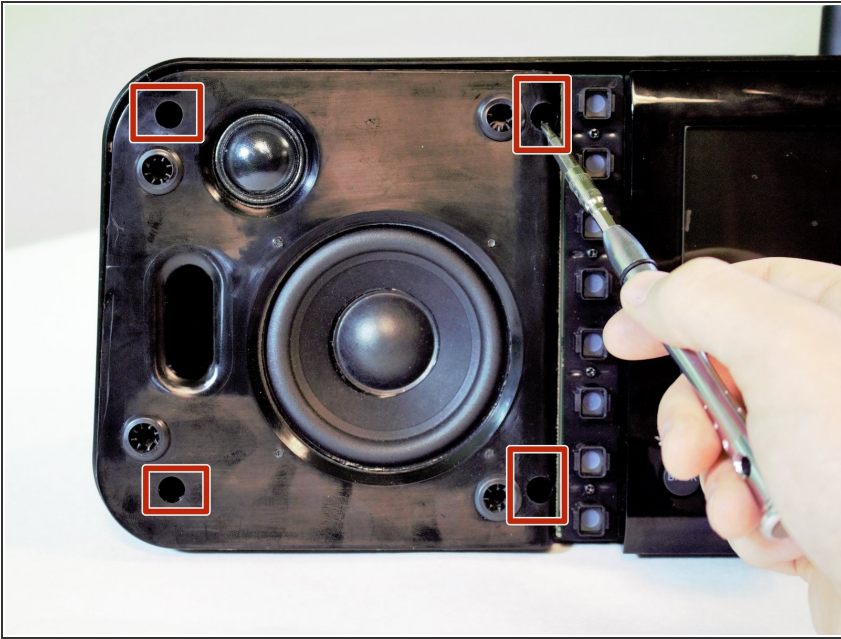
## Step 2



- Use a plastic spudger to remove the front preset selection buttons.
  - ❗ We recommend you remove all of them for easier access.
- Gently reach underneath and pull off the mesh speaker cover. It only clips in so don't worry about breaking anything.



### Step 3



- Remove (4) screws (14 mm) with a PH1 screwdriver on the front panel by the speaker.

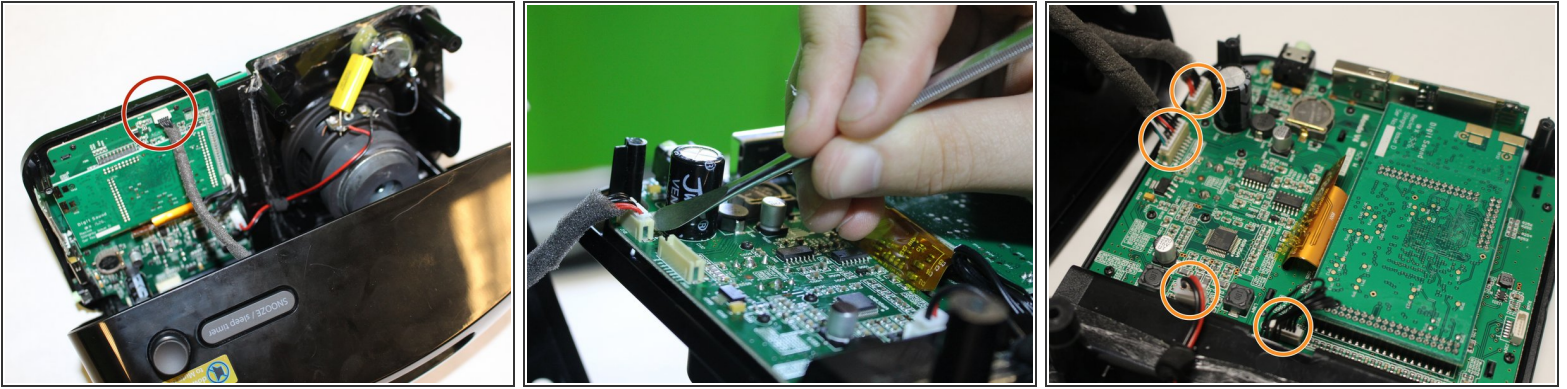
⚠ Be careful with these screws, as they can be stripped easily.

### Step 4



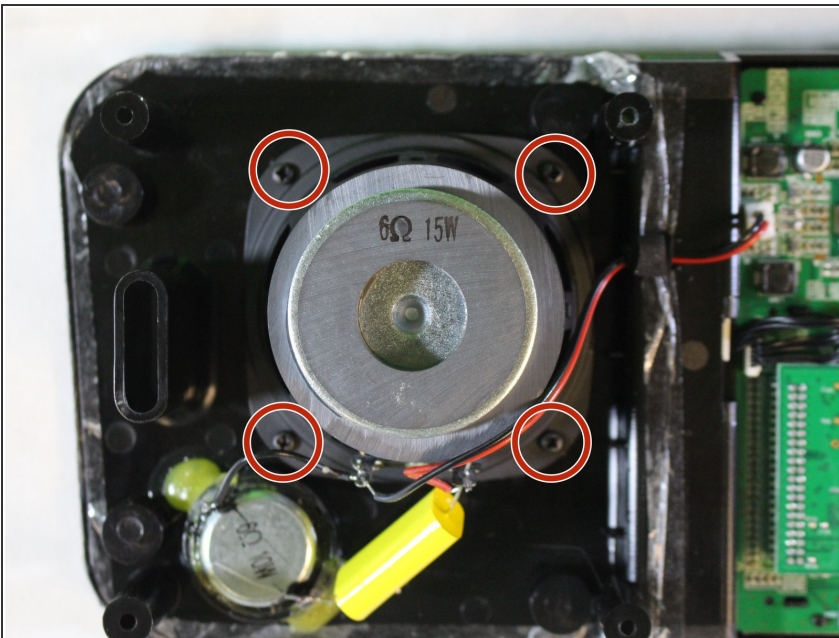
- Move the metal spudger around the front panel to remove any adhesive attaching the front panel to the device.
- Pull apart the front panel from the device with help from the metal spudger.

## Step 5



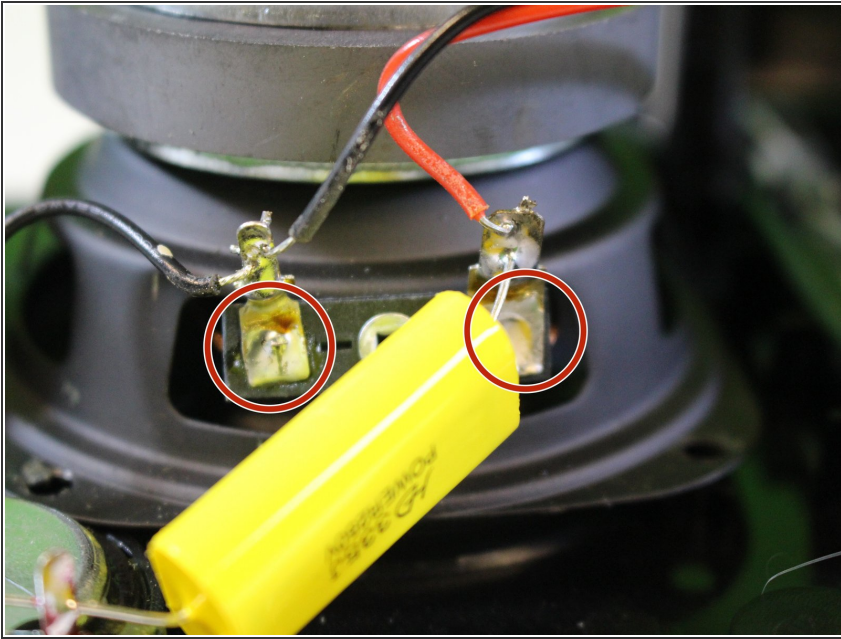
- Detach a pin connector at the top of the device using a metal spudger to open up the inner components.
- Detach (4) pin connectors inside using a metal spudger to separate the front panel from the rest of the device.

## Step 6 — Main Speaker



- Remove (4) screws (14 mm) with a PH1 screwdriver around the speaker.

## Step 7



- Desolder the wires from the speaker.
- Separate the speaker from the front panel.

To reassemble your device, follow these instructions in reverse order.