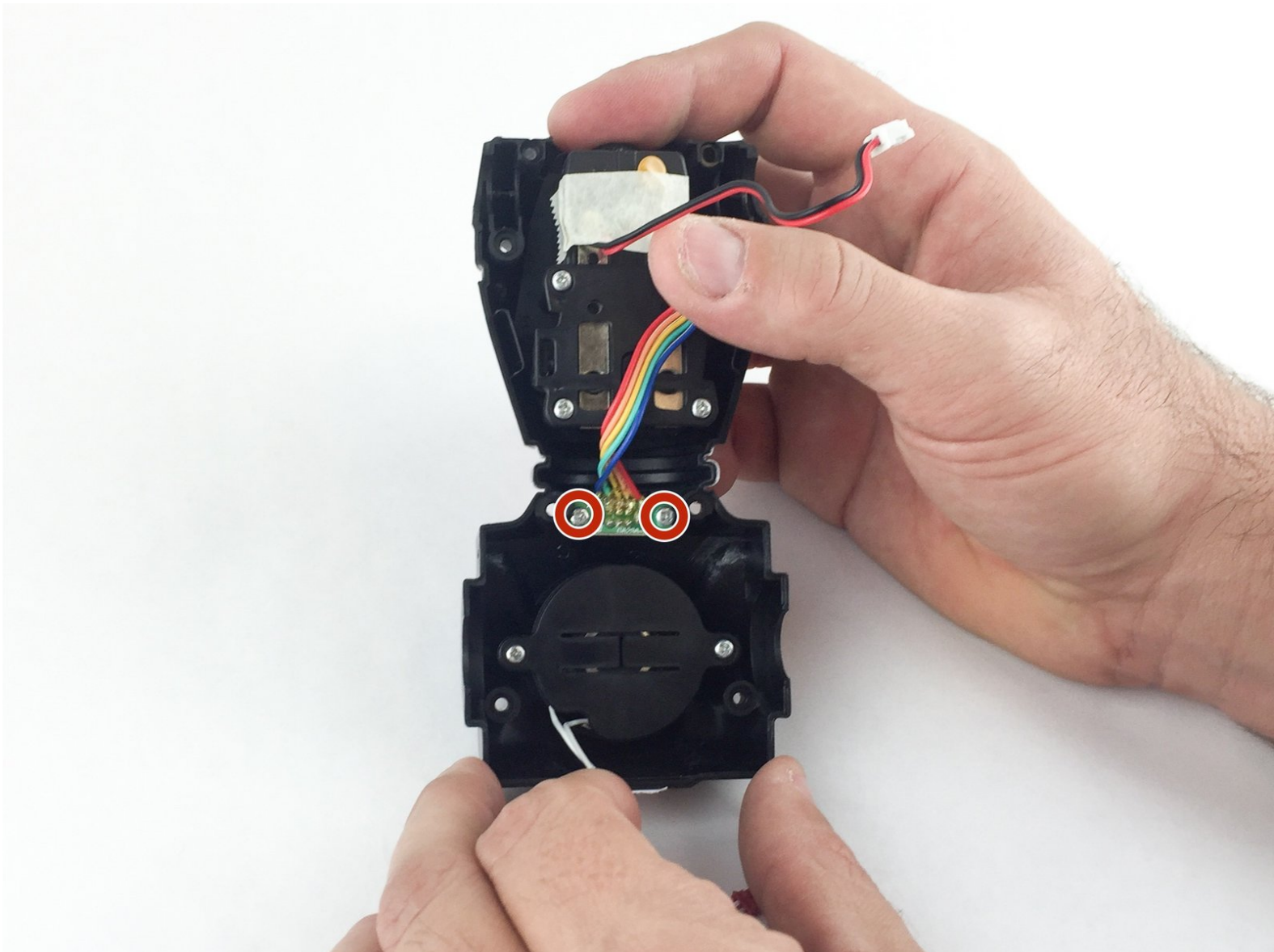




WowWee MiP Robot Power Switch Replacement

The power switch turns the MiP on or off. If...

Written By: Daniel Burkholder



INTRODUCTION

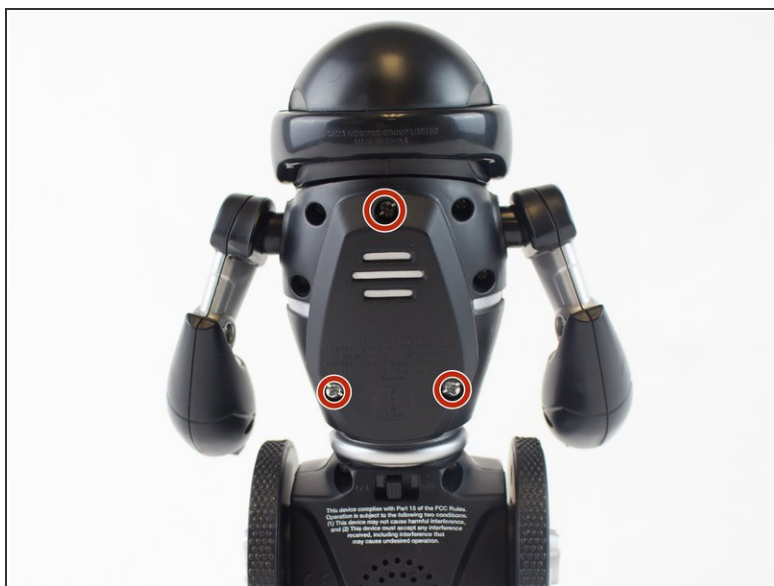
The power switch turns the MiP on or off. If it's malfunctioning the robot will not work.



TOOLS:

- [Phillips #1 Screwdriver](#) (1)
 - [Tweezers](#) (1)
 - [Phillips #2 Screwdriver](#) (1)
 - [Metal Spudger](#) (1)
-

Step 1 — Battery



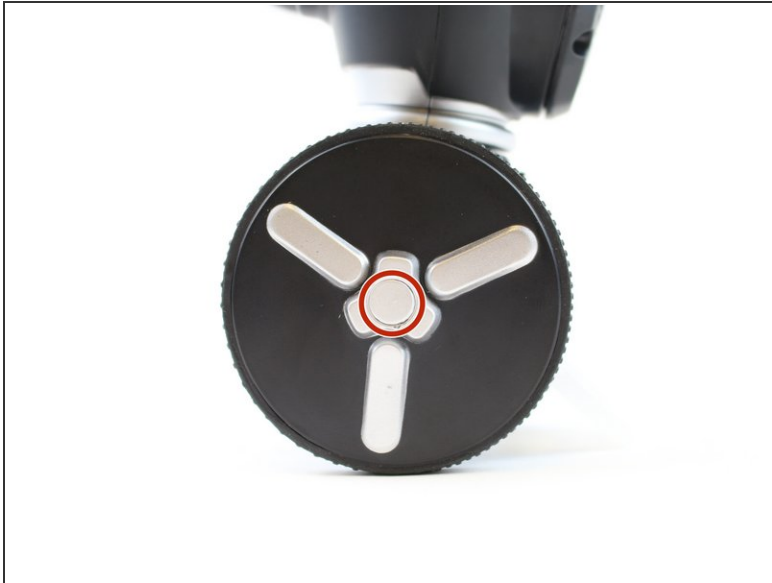
- Remove the three 12.0 mm Phillips # 2 screws from the battery cover.

Step 2



- Carefully pull the battery pack from the robot.
- Remove the batteries from the battery pack.

Step 3 — Wheel



- Use a metal spudger to carefully pry off the hubcap without marring the plastic wheel or hubcap.
- ⓘ This plastic material is not replaceable. Any damage will be noticeable.

Step 4



- Remove the 12.0 mm Phillips #2 screw.
- ⓘ Hold the wheel in place, or it will rotate as you attempt to remove the screw.

Step 5



- Pull the wheel off of the square axle.

⚠ Do not use excessive force while removing the wheel. Pulling too hard on the wheel can damage the axle.

Step 6 — WowWee MiP Robot Body Disassembly



- Remove the eight 9.3 mm Phillips #1 screws from the back of the robot.

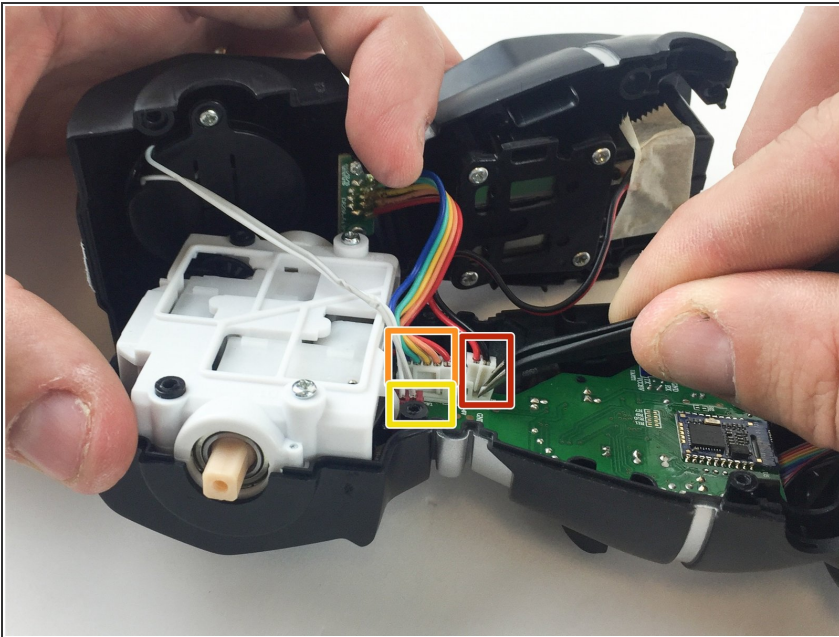
Step 7



- Remove the arms from the body.
- Carefully open the body compartment.

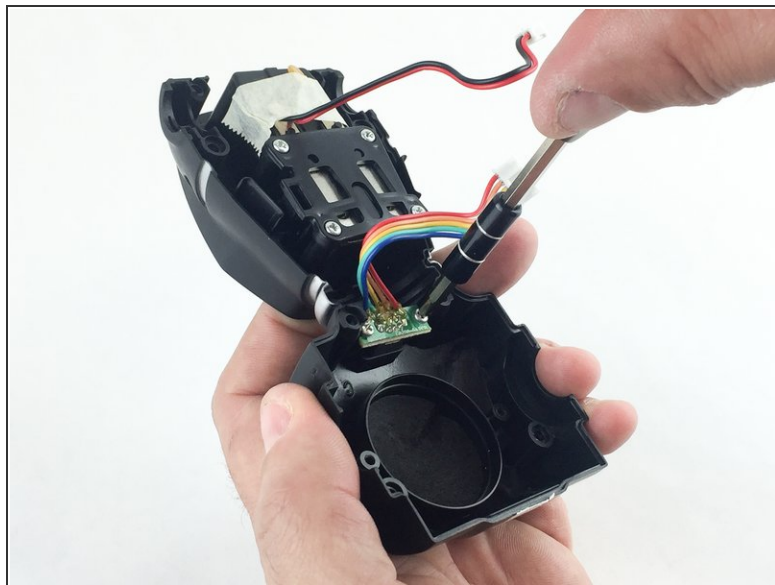
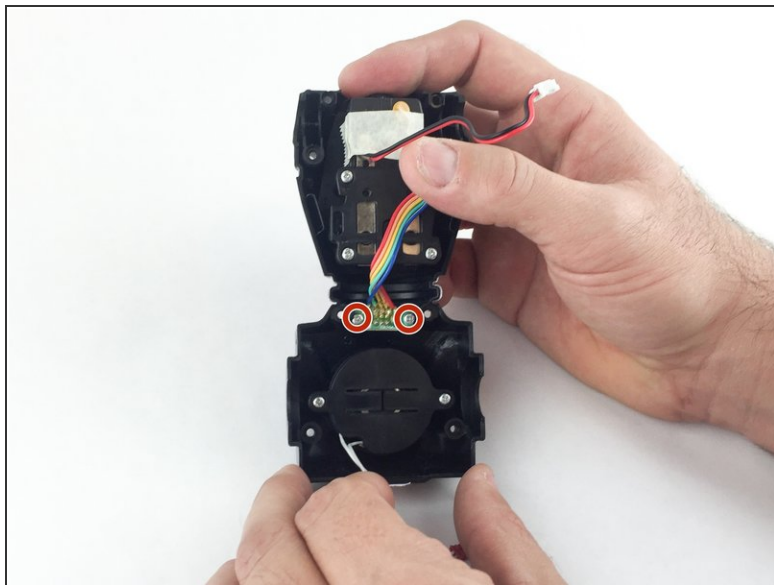
⚠ Open the compartment slowly. There are wires connecting the two body pieces together. If pulled too hard, the wires and/or the motherboard could be damaged.

Step 8



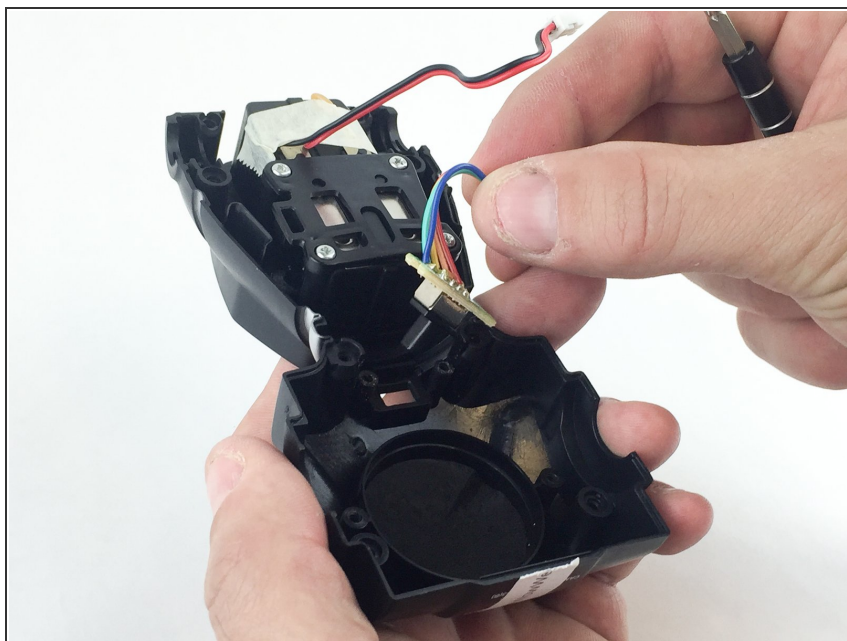
- Using precision tweezers, disconnect the following three bundles of wires:
- Connecting the battery pack to the motherboard.
- Connecting the power switch to the motherboard.
- Connecting the speaker to the motherboard.

Step 9 — Power Switch



- Remove the two 9.3mm Phillips #1 screws.

Step 10



- Remove the power switch assembly from the body by gently pulling straight out on the wires.

To reassemble your device, follow these instructions in reverse order.