



KitchenAid KHM512ER Power Cord Replacement

Replacing the power cord on a KitchenAid KHM512ER

Written By: Brad Daniels



INTRODUCTION

Is your power cord frayed or damaged? Follow this guide to replace it.



TOOLS:

- [Slip Joint Pliers](#) (1)
 - [iFixit Opening Tools](#) (1)
 - [Phillips #2 Screwdriver](#) (1)
-

Step 1 — Power Cord



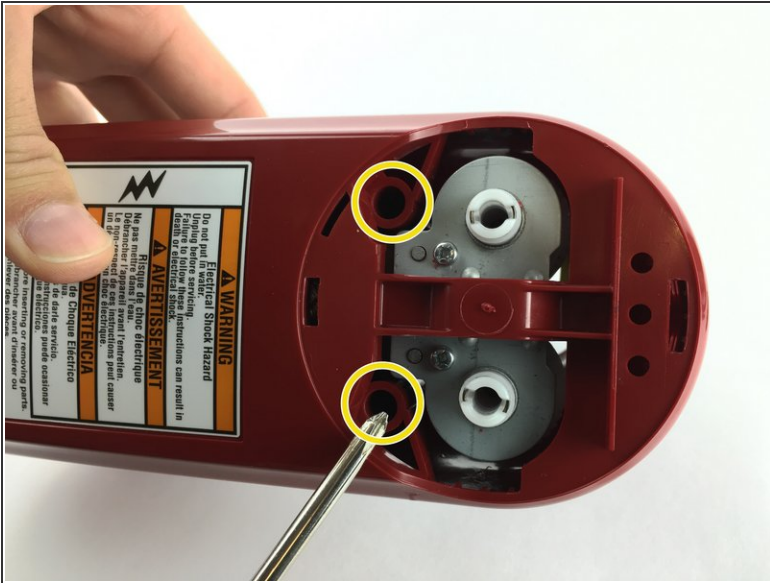
- Insert the back of a plastic opening tool into one of the beater holes
- Apply force to pull the circular plastic part off.
- If necessary, use the other side of the plastic opening tool to pry the circular plastic part off.

Step 2



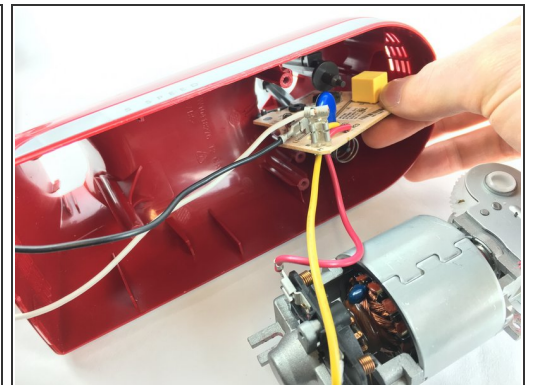
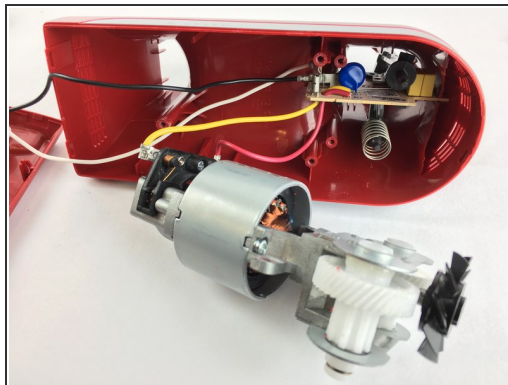
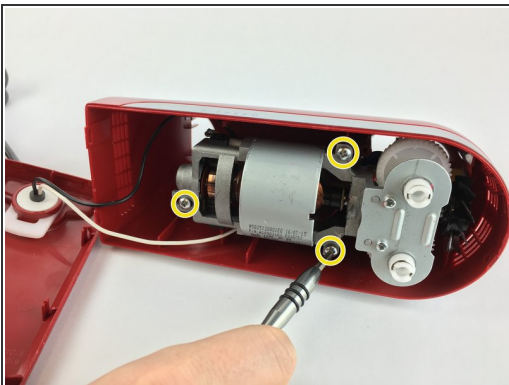
- Use a plastic opening tool to remove the speed knob.
- Pop up the panel with a plastic opening tool.
- Use a plastic opening tool to pry the white plastic switch assembly out.

Step 3



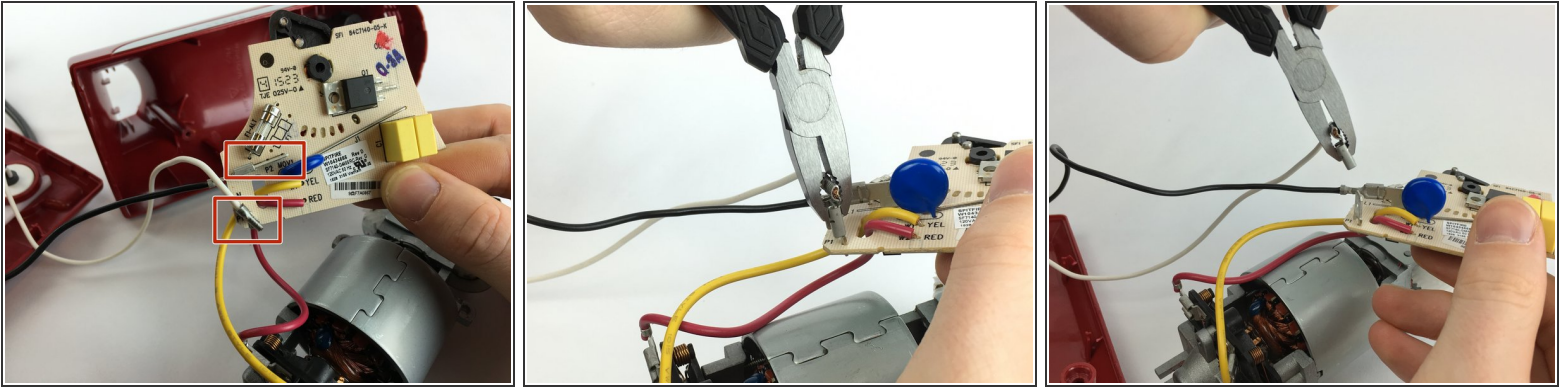
- Use a Phillips 2 screwdriver to remove the two 20.0mm screws that hold the bottom plastic piece.
- ⓘ Your screwdriver may not be long or narrow enough to reach the screws in these holes. If that's the case, use another screwdriver.
- Remove the bottom plastic piece using a plastic opening tool.

Step 4



- Using a Phillips 2 screwdriver, remove the three 20.0mm screws holding the motor assembly in place.
- Use your hands to remove the motor assembly and circuit board.

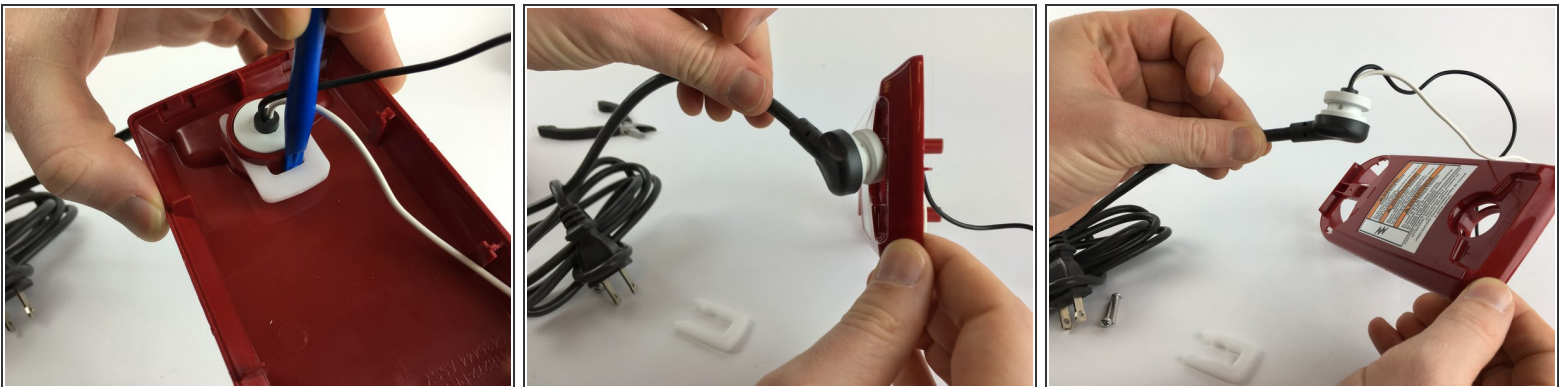
Step 5



- Firmly grip the circuit board, and using pliers, remove the black and white power cord connectors from the circuit board.

⚠ Some force may be required. Be careful not to cut yourself on any electrical components.

Step 6



- Using a plastic opening tool, remove the white plastic clip on the inside of the bottom plastic piece.
- Once it's loose, remove it with your fingers.
- Pull the power cord through the hole.

To reassemble your device, follow these instructions in reverse order.