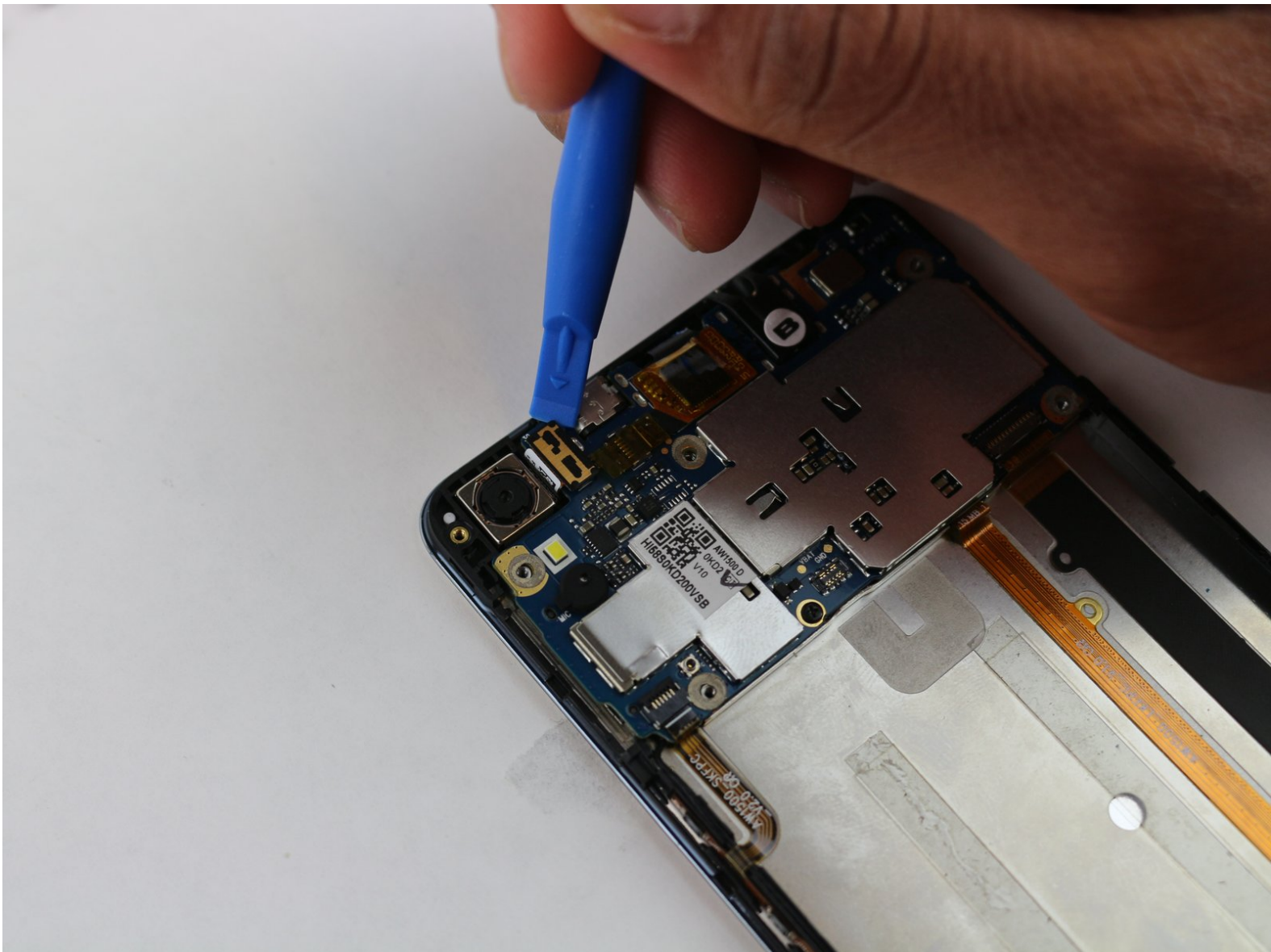




BLU Energy X Plus Camera Replacement

This guide will explain how to disassemble the BLU Energy X Plus to replace the camera.

Written By: woodjake94



INTRODUCTION

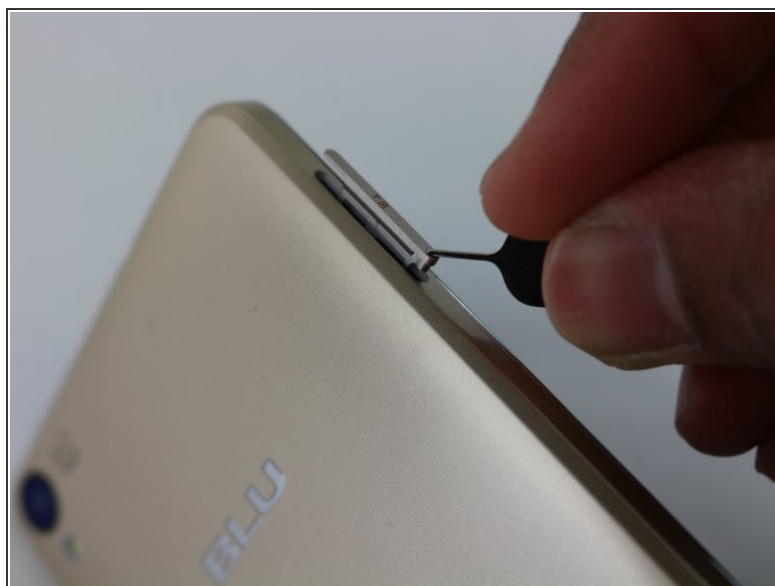
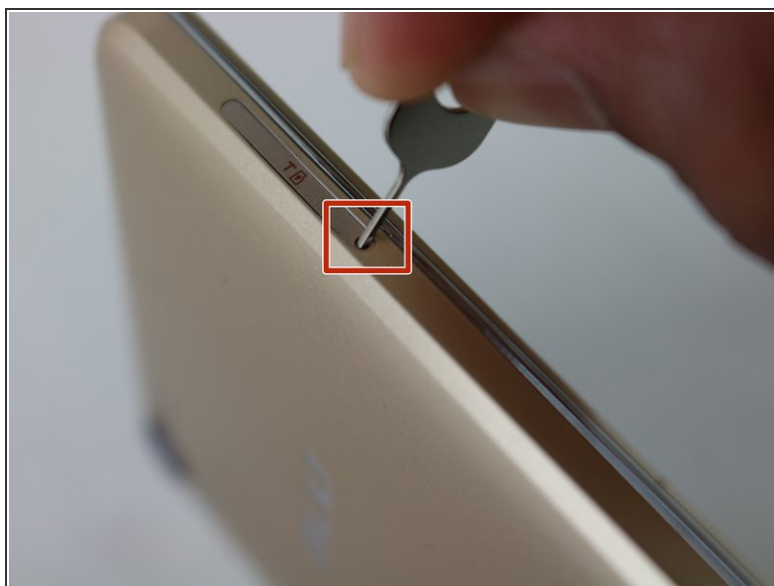
You may need to replace the Camera on your BLU Energy X Plus due to various reasons. This guide will teach you how to replace the BLU Energy X Plus camera with all the necessary instructions and pictures to help you throughout the replacement process. This is a three step process that comes after the Battery Replacement guide. If done correctly, you will have replaced the camera on the device.




TOOLS:

- [iFixit Opening Tools](#) (1)
 - [Phillips #000 Screwdriver](#) (1)
 - [SIM Card Eject Tool](#) (1)
 - [64 Bit Driver Kit](#) (1)
-

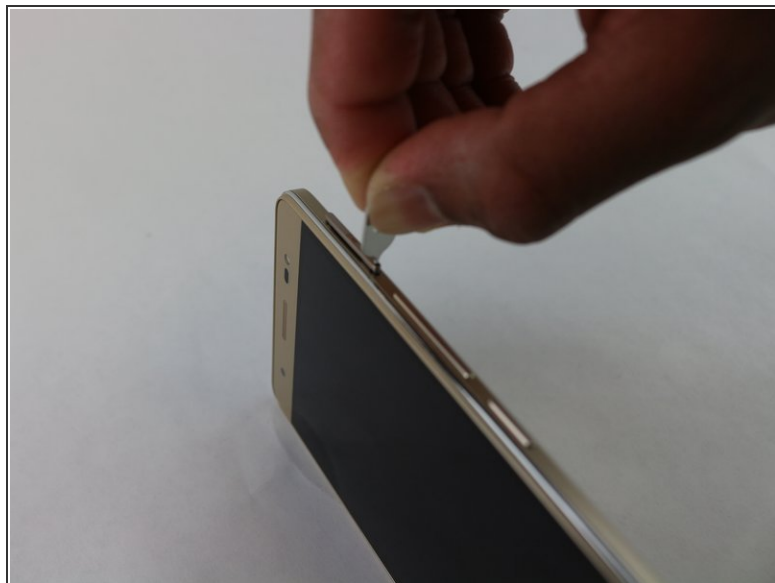
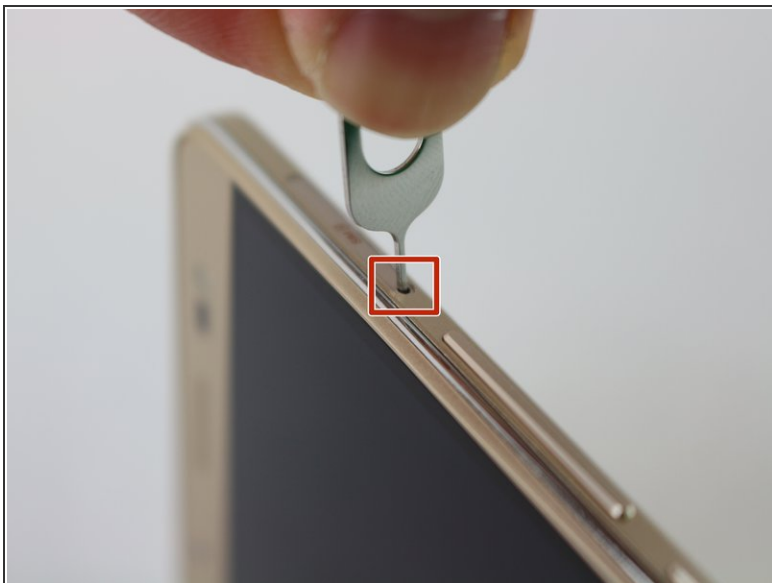
Step 1 — Battery



 Before disassembling your BLU Energy X Plus, make sure it is powered off.

- Flip your device to the left side facing up and take out the SD card tray using the SIM card eject tool. You will insert the tool in at an angle and lift the tray up.

Step 2



- Flip your device to the right side facing up and use the SIM card eject tool to remove the SIM card by pushing the tool in the hole. You will feel a button click and the tray should slide out 2mm. You will then use your fingers to pull the tray out.

Step 3



- Flip your device over so your back cover is facing up.

Step 4



- Take the blue plastic opening tool and insert it in-between the back of the phone and the chrome trim. Go all the way around the device slowly to take the back cover off.

Step 5



- Remove the six silver screws from the cover plate, and one black screw from the top.
- Use the screwdriver head J000 to remove all the screws.
- Six silver screws, all 1.5mm in length.
- One black screw, 1mm in length.

Step 6



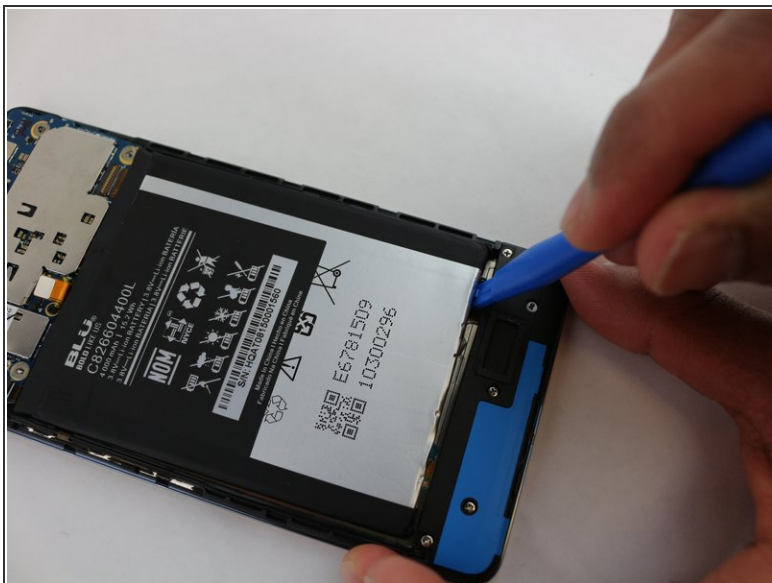
- After all the screws are out, lift the protective metal cover off of the phone. Lift from the bottom of the cover.

Step 7



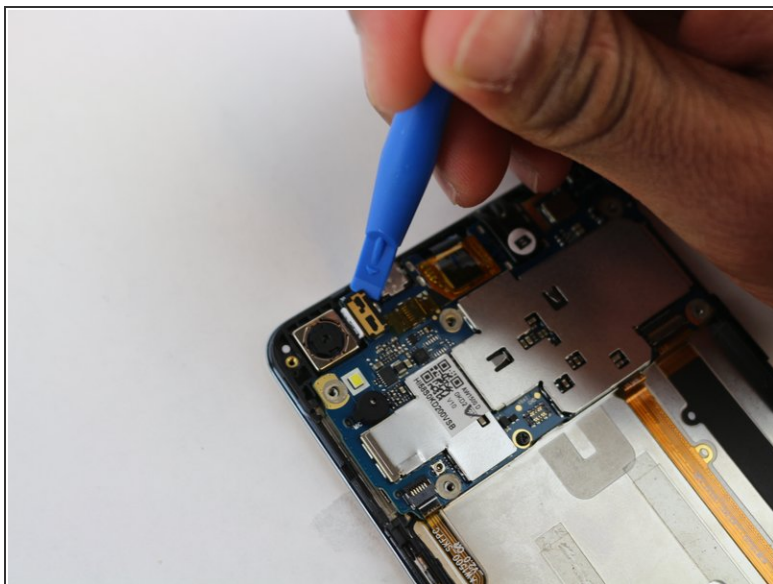
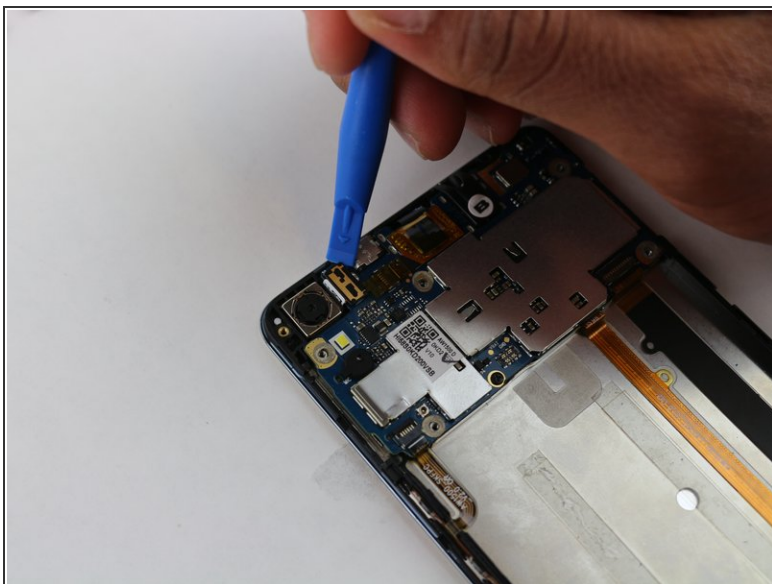
- Use the small blue plastic opening tool to lift the contact attached to the battery from the motherboard of the phone.

Step 8



- Use the small blue plastic opening tool to lift the battery from the bottom with little force because the battery will be glued in.
- Then, use your hand to remove the battery completely.

Step 9 — Camera



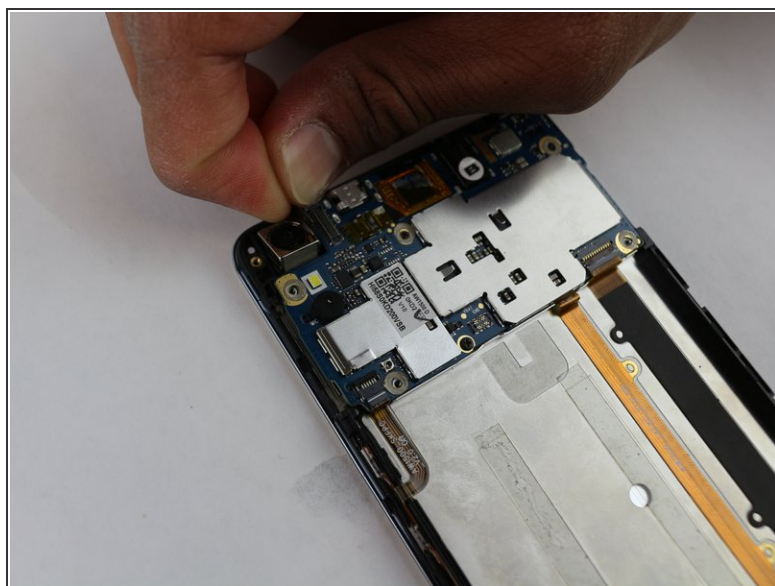
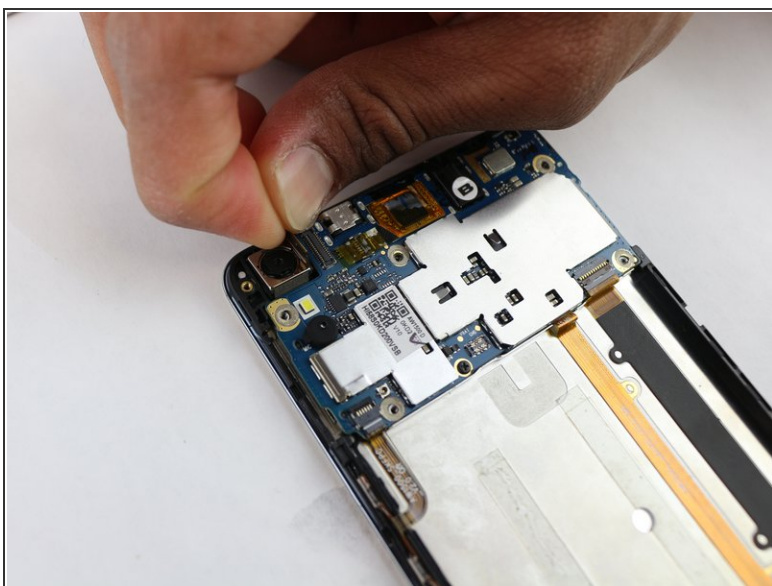
- Disconnect the contact patch using the small blue plastic opening tool.

Step 10



- Loosen the camera from the glue using the small blue plastic opening tool.

Step 11



- After loosening the glue from the bottom of the camera, lift the camera out of the phone.

To reassemble your device, follow these instructions in reverse order.