



# iMac Intel 21.5" EMC 2428 Optical Drive Replacement

Prereq only.

Written By: Walter Galan



---

# INTRODUCTION

Prereq only.

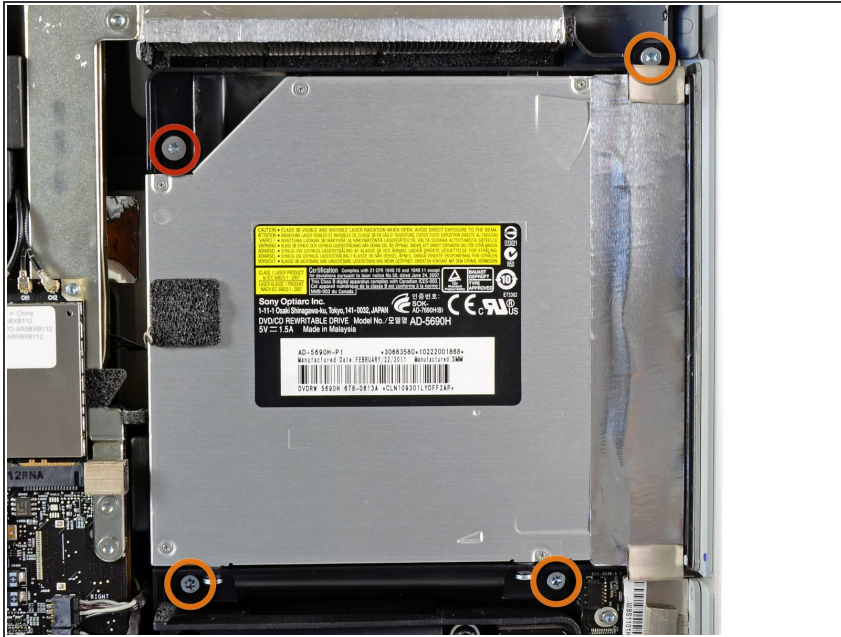


## TOOLS:

- [T10 Torx Screwdriver](#) (1)
-



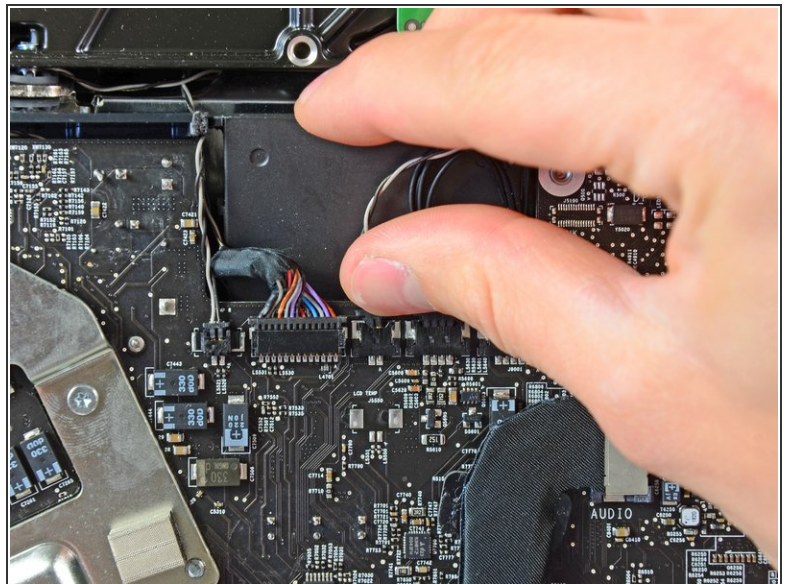
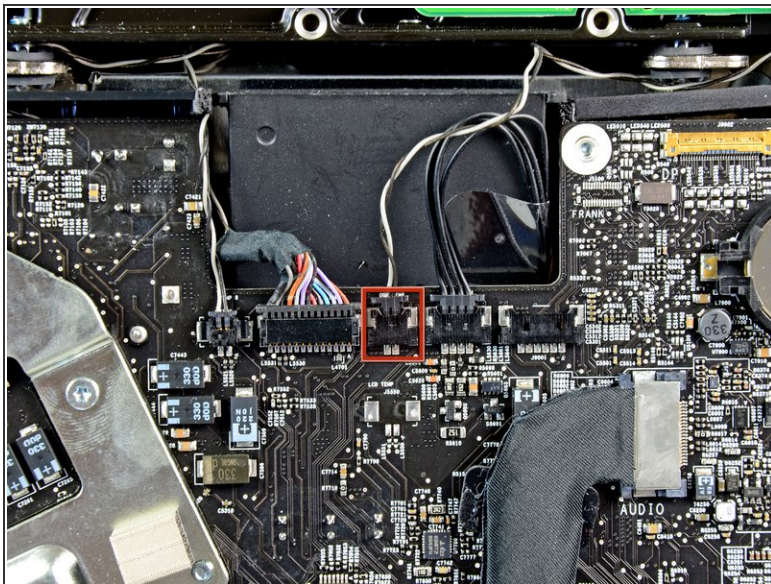
## Step 1 — Optical Drive



❗ From here, the repair will be easier if you flip the computer around so the base is facing you.

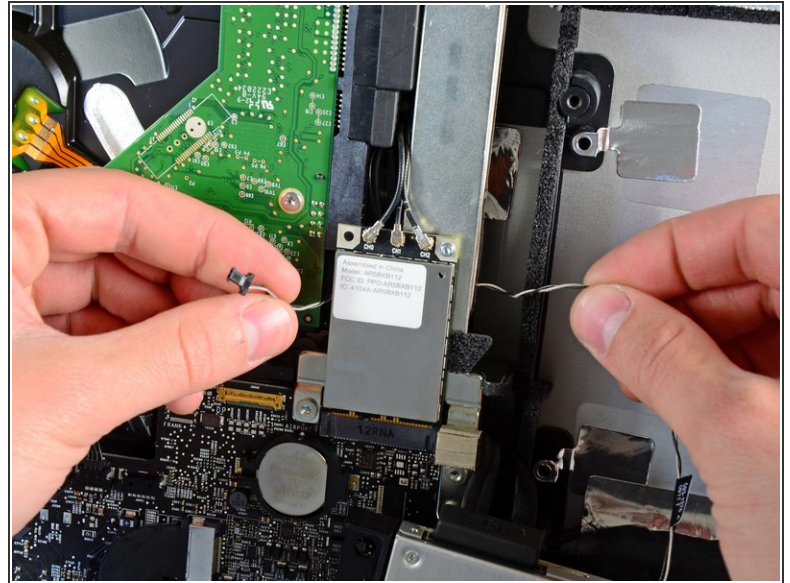
- Remove the following four screws:
  - One 9.3 mm T10 Torx screw with a large head
  - Three 9.3 mm T10 Torx screws with a normal sized head

## Step 2



- Pull the optical drive thermal sensor connector straight up from its socket on the logic board. Pull parallel to the board.

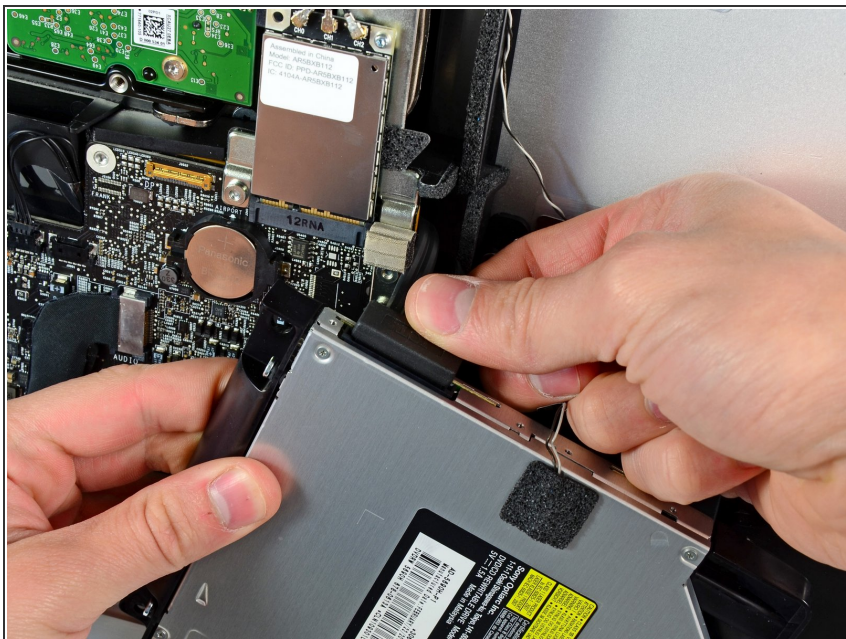
## Step 3



- Lift the inner edge of the optical drive and maneuver its connector past the GPU frame attached to the logic board.
- Carefully pull the optical drive off its mounting pins on the right side of the outer case to gain clearance for disconnecting the optical drive cable.
- Allow the optical drive to hang down as you de-route the optical drive thermal sensor connector from behind the GPU heat sink.



## Step 4



- Disconnect the optical drive cable by pulling its connector away from the optical drive.
- Remove the optical drive from the iMac.

To reassemble your device, follow these instructions in reverse order.