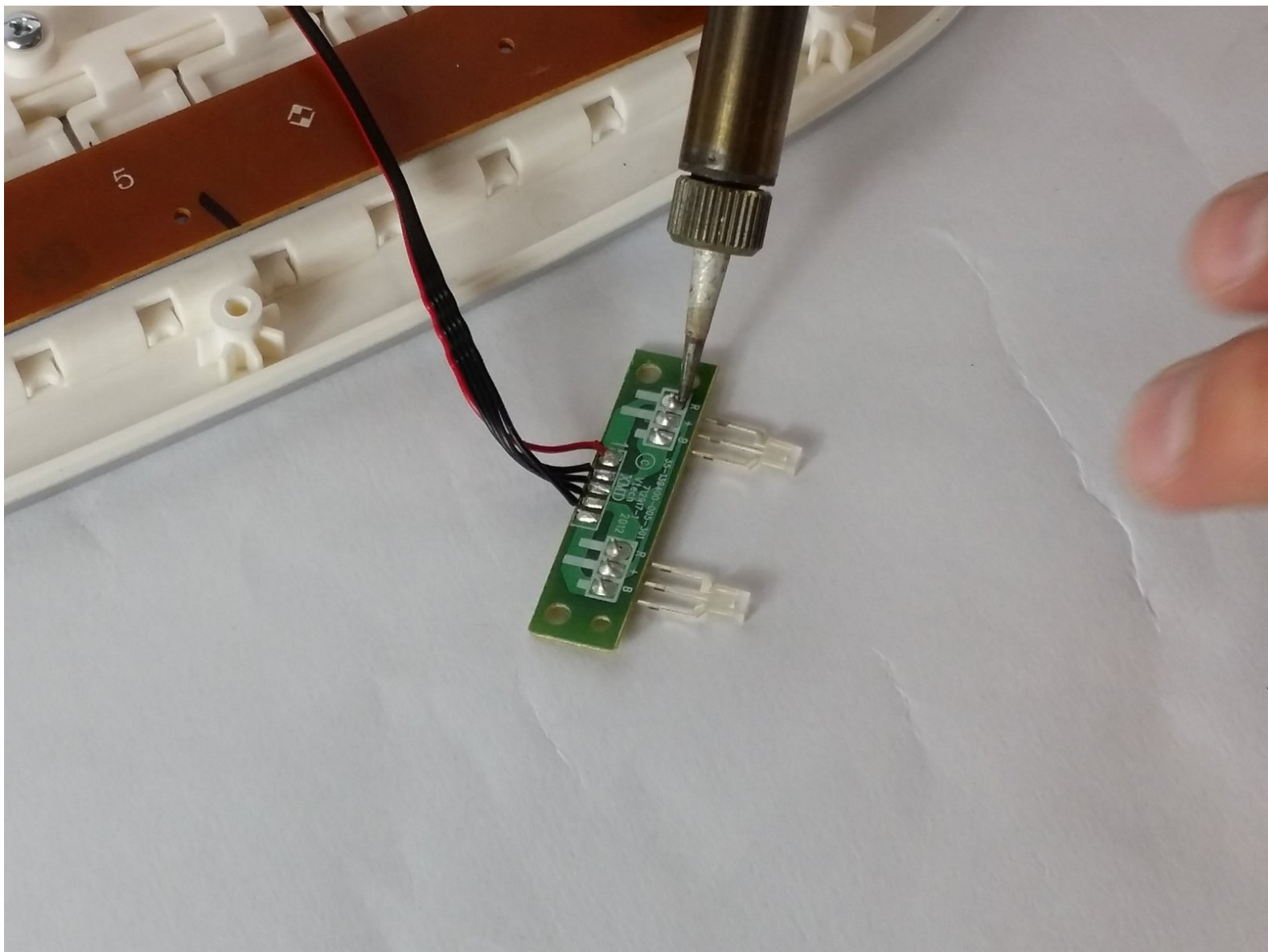




VTech Little Apps Tablet LED Replacement

This guide will assist you in removal and replacement of the light emitting diodes (LEDs) that illuminate the screen of the Vtech Little Apps Tablet. (Requires soldering)

Written By: Dakota Wiersma



INTRODUCTION

The device LEDs help light the screen. This guide will assist you in removing them and replacing them.

TOOLS:

- [Phillips #1 Screwdriver](#) (1)
 - [iFixit Opening Tools](#) (1)
 - [Phillips #0 Screwdriver](#) (1)
 - [Soldering Iron](#) (1)
 - [Solder](#) (1)
-

Step 1 — Battery



- Remove the 9.9 mm screw covering the batteries with a PH1 driver head.

Step 2



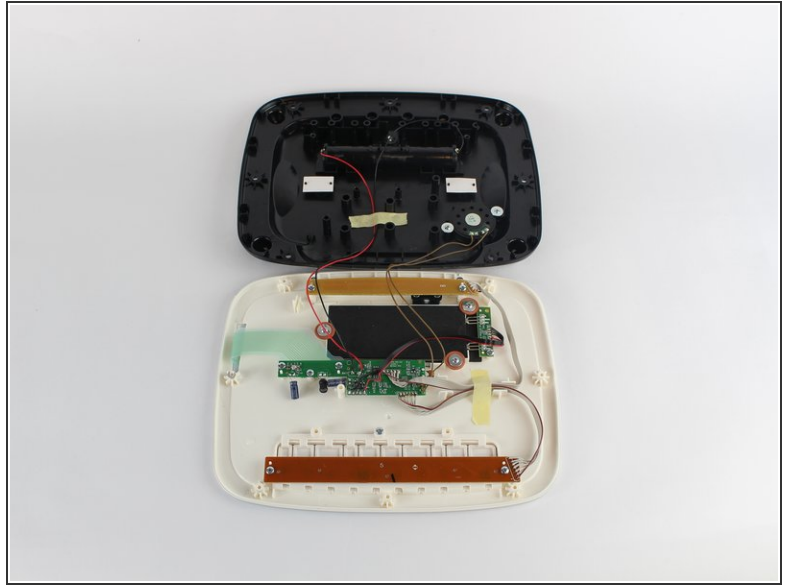
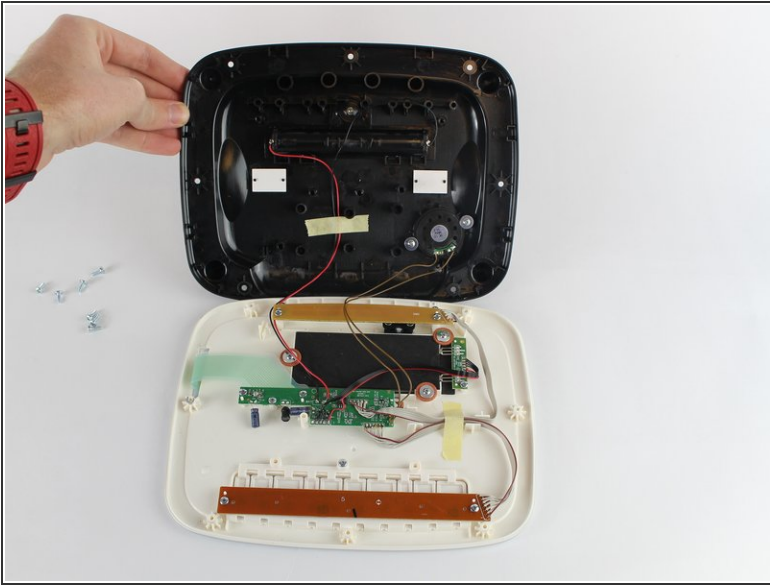
- Use a plastic opening tool to pry the batteries out of their holding.
- ★ If replacing your batteries with new ones, be careful to insert them as indicated on the device.

Step 3 — Back Cover



- Position the VTech Little Apps Tablet face-down on a flat surface so that you can clearly see the back of the device.
- Remove all seven 9.6 mm screws located around the perimeter of the back cover with a PH1 driver head.

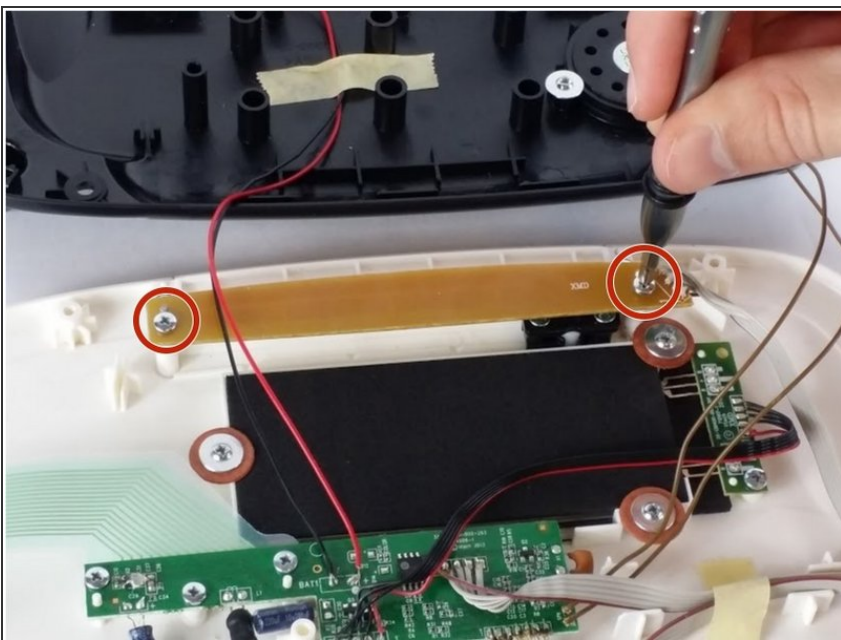
Step 4



- Gently remove the back cover then flip it 180 degrees so that the back cover of the device is now face-down.

⚠ Proceed with caution as there are wires attaching the back cover to the front cover of the device that could be easily detached.

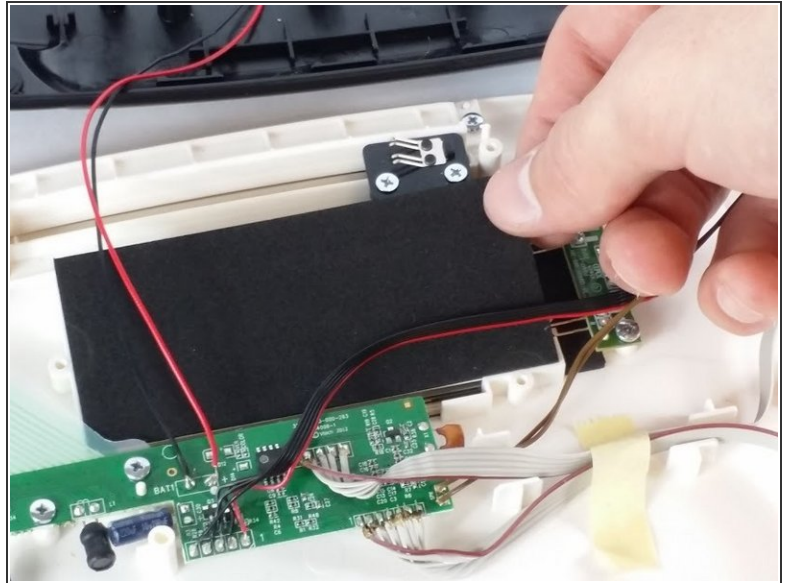
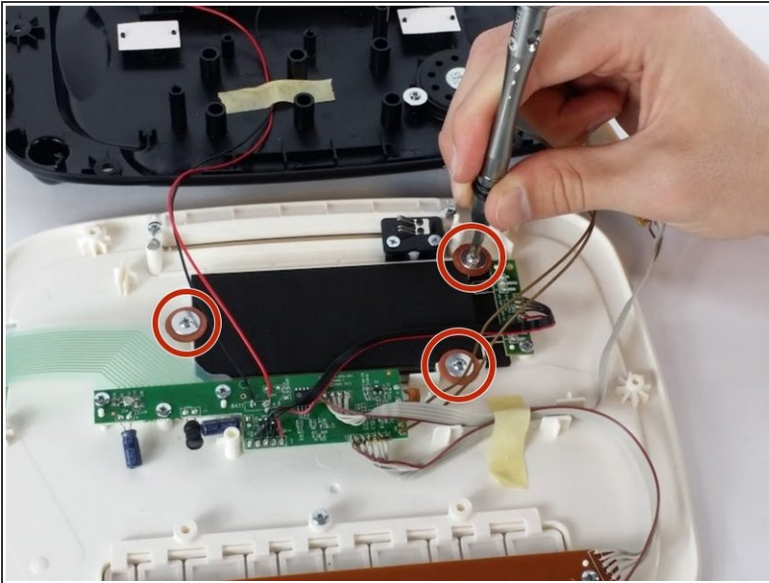
Step 5 — LED



- Unscrew the two 7.3 mm screws using a PH0 driver head.
- Gently lift the beige circuit board and set aside.

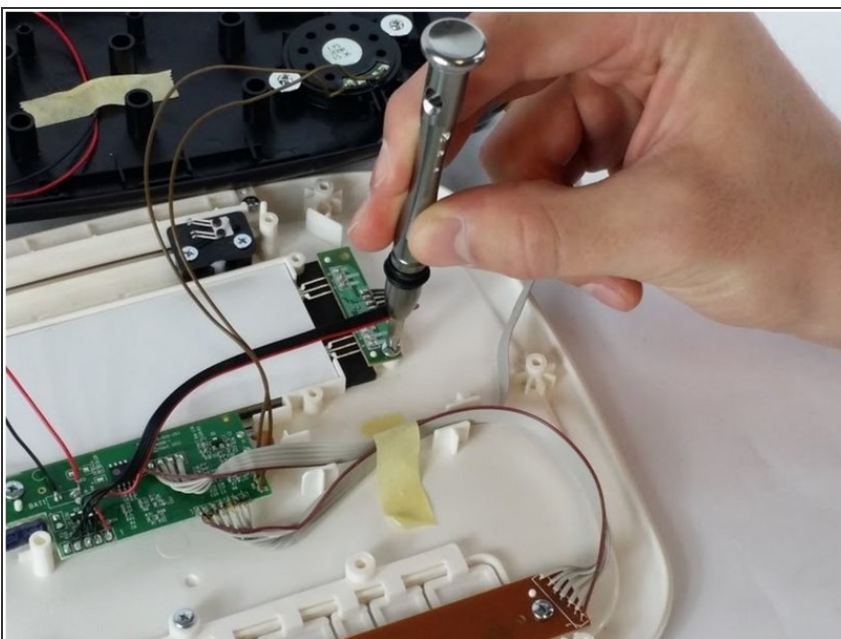
⚠ Be sure to not damage the wires connecting the circuit board to the motherboard, you are only creating space to work in.

Step 6



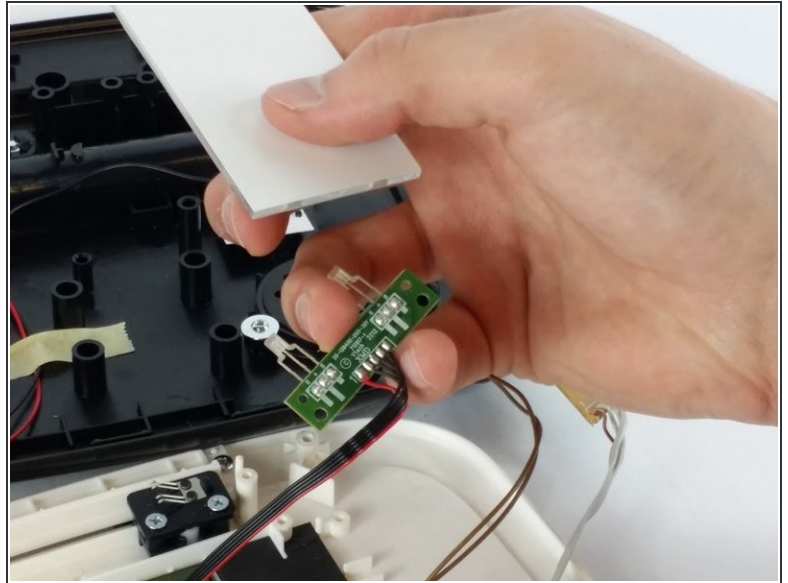
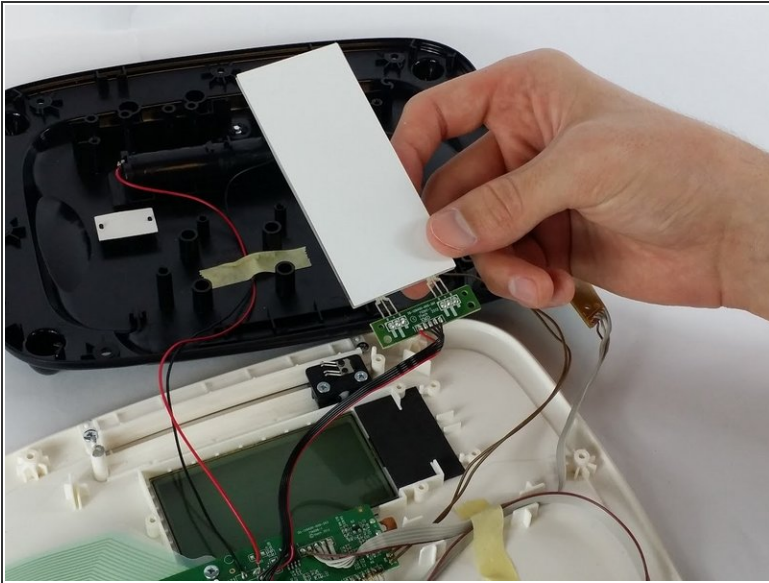
- Unscrew three 7.3 mm panhead screws with the PH0 driver.
- Remove the red-brown washer after removing the screws.
- Remove the black foam insert and set aside.

Step 7



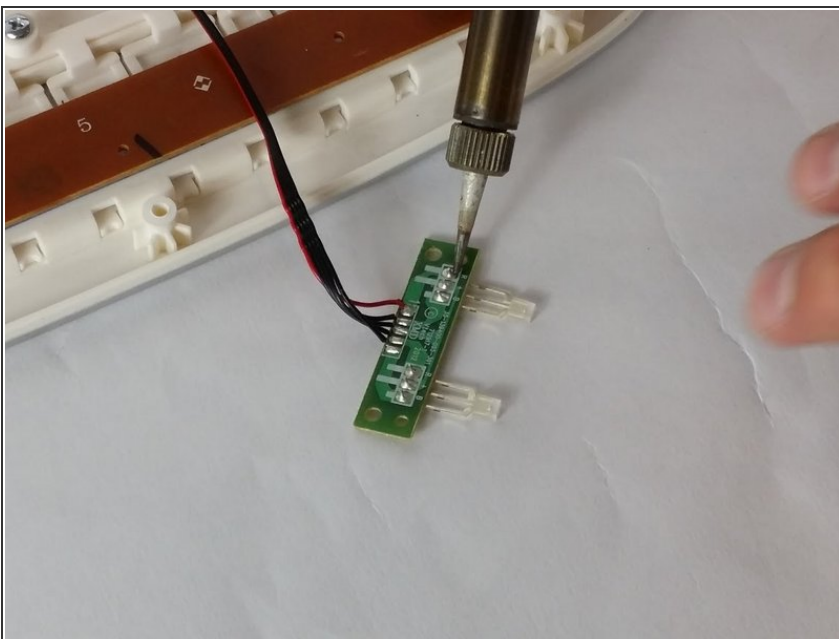
- Unscrew the 7.3 mm screw fastening the LED circuit board to the device shell with a PH0 driver head.
- ⚠ Be careful when rescrewing circuit boards. Too much pressure or too tight of screws could damage them.

Step 8



- Gently lift both LED circuit board and the white glass light refractor panel away from the device.
 - Separate the LED circuit board and light refractor panel by gently pulling apart. Place the light panel to the side.
- i** Skip the next step if you are proceeding with this guide as a part of the Screen Replacement.

Step 9



- Carefully desolder the LED leads (labeled "R", "+" and "B" on the circuit board) to disconnect the LED from the circuit board.
 - Replace the LED and solder the new connection to the LED circuit board.
- i** Refer to the [iFixit Soldering Guide](#) for assistance.

To reassemble your device, follow these instructions in reverse order.