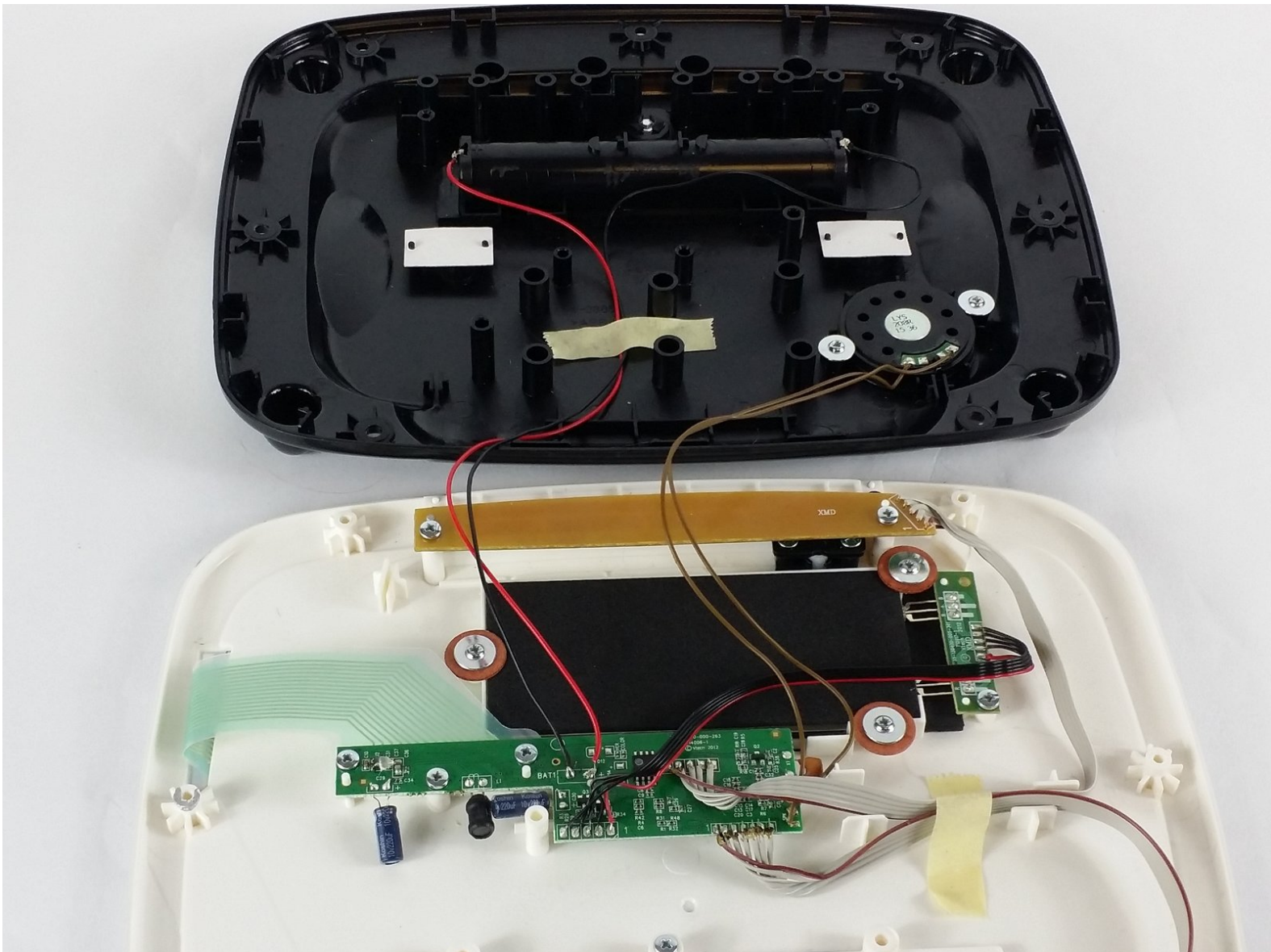




# VTech Little Apps Tablet Battery Internal Wiring Replacement

Learn to replace the red and black internal wires that connect the batteries to the motherboard and power the device! (Requires soldering)

Written By: Johnnie Cairns



This document was generated on 2020-11-28 04:58:37 AM (MST).

# INTRODUCTION

If your device is not turning on, it is possible that the wiring that connects the batteries to the motherboard is ruptured. This guide will give directions on replacing these wires.

---

## TOOLS:

- [Phillips #1 Screwdriver](#) (1)
  - [iFixit Opening Tools](#) (1)
  - [Soldering Iron](#) (1)
  - [Solder](#) (1)
-

## Step 1 — Battery



- Remove the 9.9 mm screw covering the batteries with a PH1 driver head.

## Step 2



- Use a plastic opening tool to pry the batteries out of their holding.
- ★ If replacing your batteries with new ones, be careful to insert them as indicated on the device.

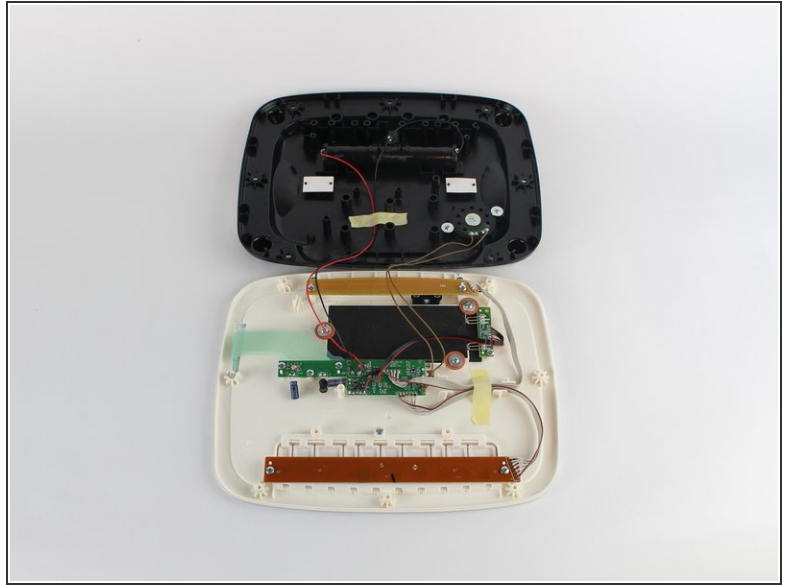
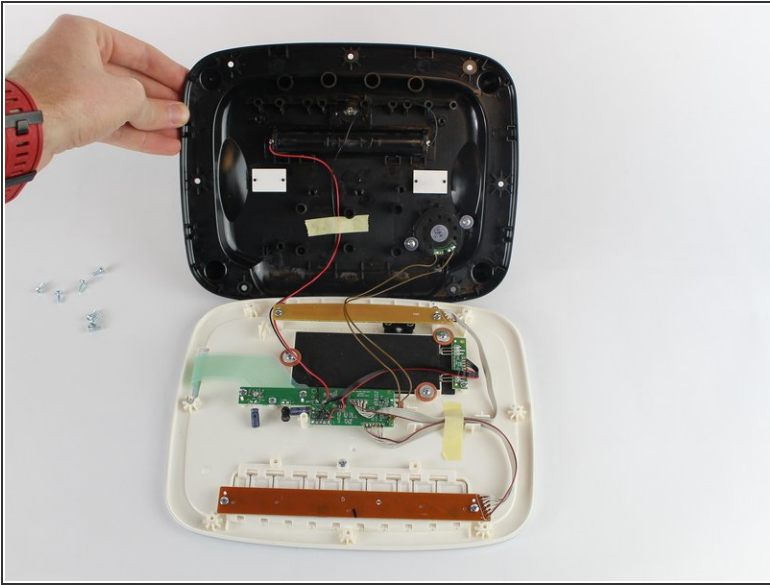
### Step 3 — Back Cover



- Position the VTech Little Apps Tablet face-down on a flat surface so that you can clearly see the back of the device.
- Remove all seven 9.6 mm screws located around the perimeter of the back cover with a PH1 driver head.



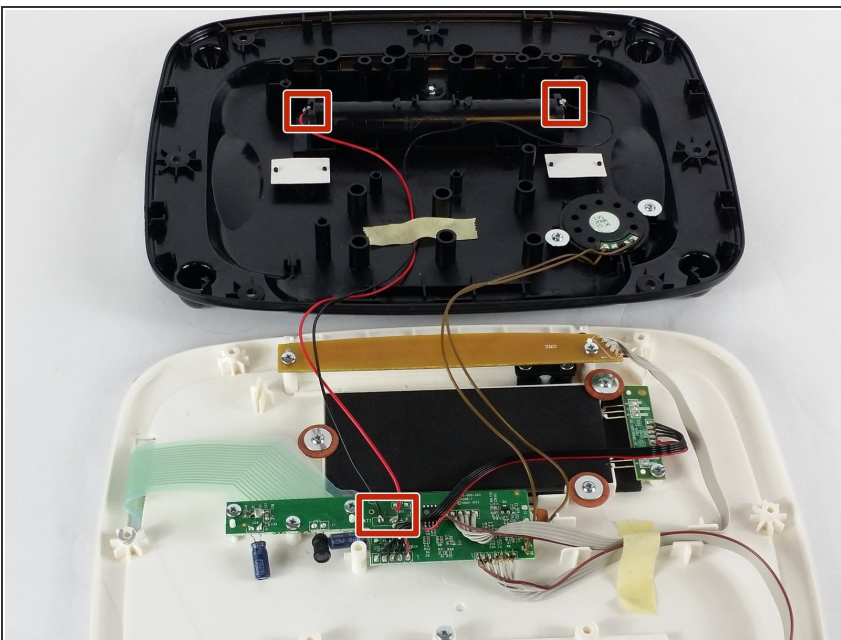
## Step 4



- Gently remove the back cover then flip it 180 degrees so that the back cover of the device is now face-down.

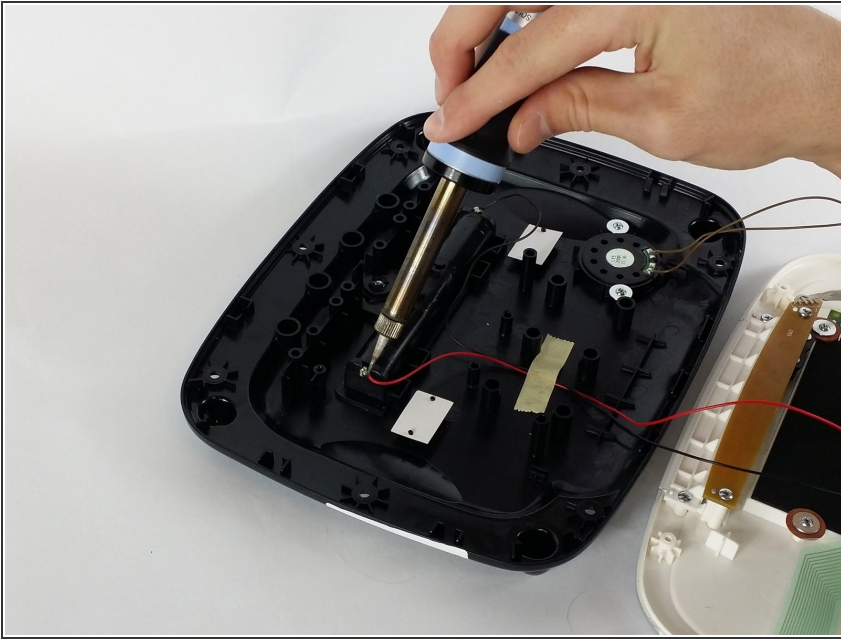
⚠ Proceed with caution as there are wires attaching the back cover to the front cover of the device that could be easily detached.

## Step 5 — Battery Internal Wiring



- Visually inspect the wires connecting the motherboard to the batteries, looking for damage.
- ⓘ Possible damage includes: lead disconnections, wire fraying, and complete wire disconnections.

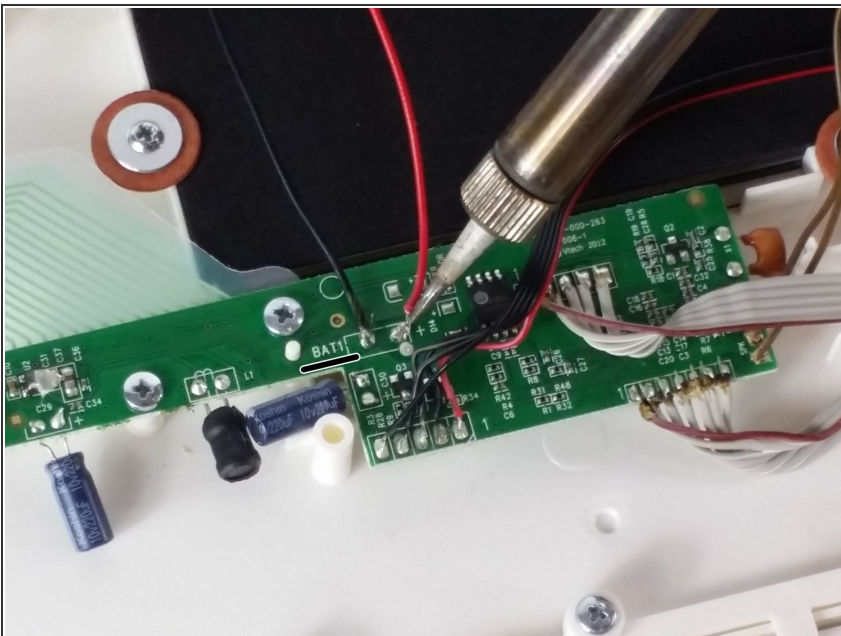
## Step 6



- Desolder the internal wire leads connected to the batteries, making sure to remove the positive (red) wire first, and the negative (black) wire second.

❗ For assistance with soldering, see this [Guide](#).

## Step 7



- Next desolder the same black and red internal wire leads connected to the motherboard.

❗ The order does not matter for this step.

To reassemble your device, follow these instructions in reverse order.