



Samsung Impression Circuit Board Replacement

Has your Samsung Impression smartphone stopped...

Written By: Ross McKelvie



INTRODUCTION

Has your Samsung Impression smartphone stopped working after countless fixes? Is the battery still functional, but the phone cannot boot up?

You may have a shorted circuit board. The circuit board of the Samsung Impression contains all systems necessary to make the cell phone function: memory, CPU, radio antennas, and oscillators.

Well don't retire your cellphone just yet! A circuit board replacement can help you save money and keep your phone. This step-by-step guide will help you easily remove and replace your phone's circuit board within 15 minutes.

Prior to reading these instructions, purchase a circuit board from the official Samsung parts website at <https://www.samsungparts.com/Default.asp...> Once you've received the new circuit board, power off the Samsung Impression and carefully follow these step-by-step instructions for replacing the circuit board with the necessary tools listed below.



TOOLS:

- [Phillips #0 Screwdriver](#) (1)
 - [Spudger](#) (1)
-

Step 1 — Battery



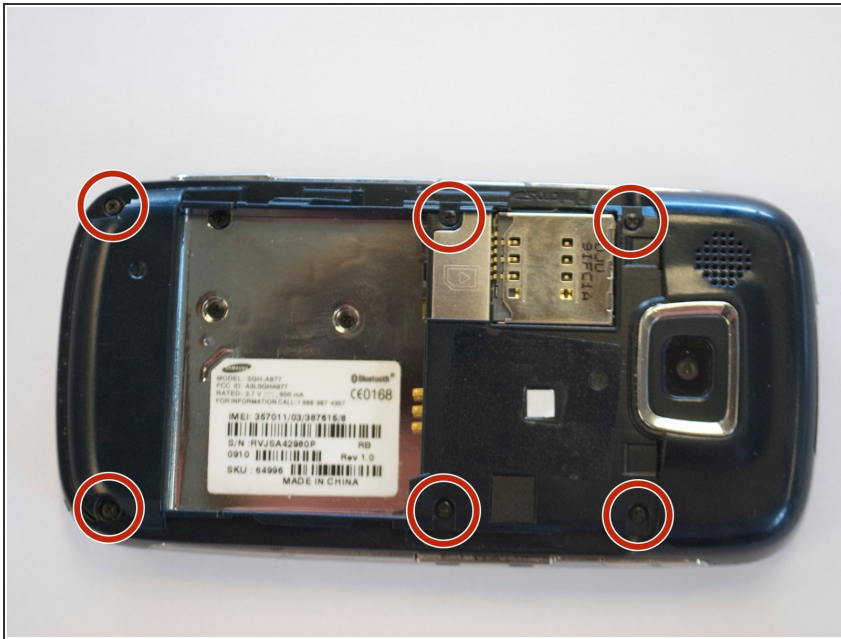
- Orient the phone with the screen facing down.
- Using your thumb, slide the back panel away from the camera to expose the battery.

Step 2



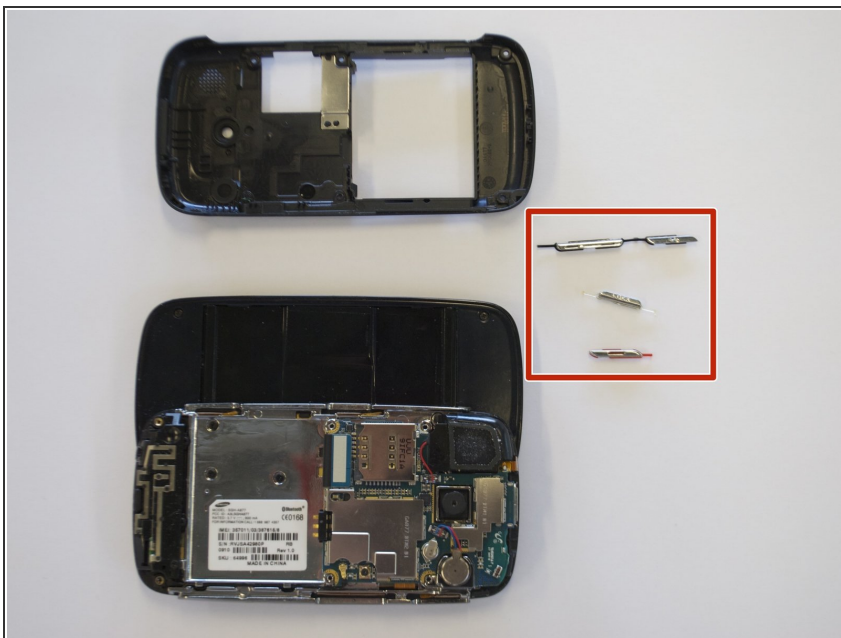
- Insert the tip of the spudger on the left side of the battery, opposite the direction of the white arrow.
- Pry the battery free. It will pivot in the direction of the white arrow.

Step 3 — Back Cover



- Remove the six 3.5 mm screws using a Phillips #000 screwdriver. Make sure to unscrew in a counterclockwise direction.

Step 4



- Remove the back cover by gently prying around the top and bottom edges with the spudger.
- ⓘ It may help to slide the touchscreen upwards when removing the back panel.
- The side buttons will become loose and will fall out, so put these in a safe place.

Step 5 — Back Speaker



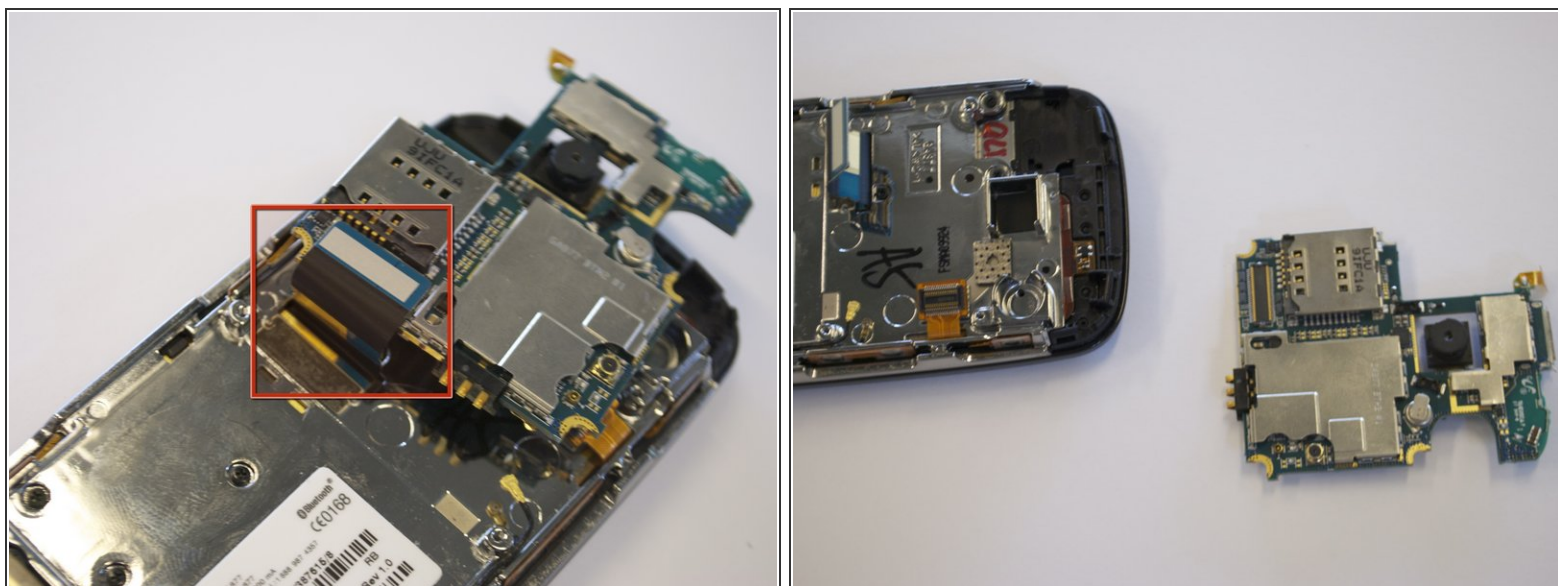
- Remove the back speaker by carefully prying it upwards with the spudger.
- The speaker will still be attached to the circuit board by a wire and a small piece of clear plastic.
- Disconnect the speaker by lifting the clear plastic piece at the end of the wire.

Step 6 — Circuit Board



- To free the circuit board, remove the black wire that is holding it down.
- ① You can remove the wire by gently prying up the gold terminator that is attached to the green circuit board. A gentle tug is all it should take.

Step 7



- The circuit board will still be held on by a blue and black ribbon. Remove the entire circuit board by gently tugging the ribbon upwards.

To reassemble the device, carefully follow these instructions in reverse order. With a new circuit board installed, your phone should be functional again! For more guides on Samsung Impression maintenance, visit www.ifixit.com.