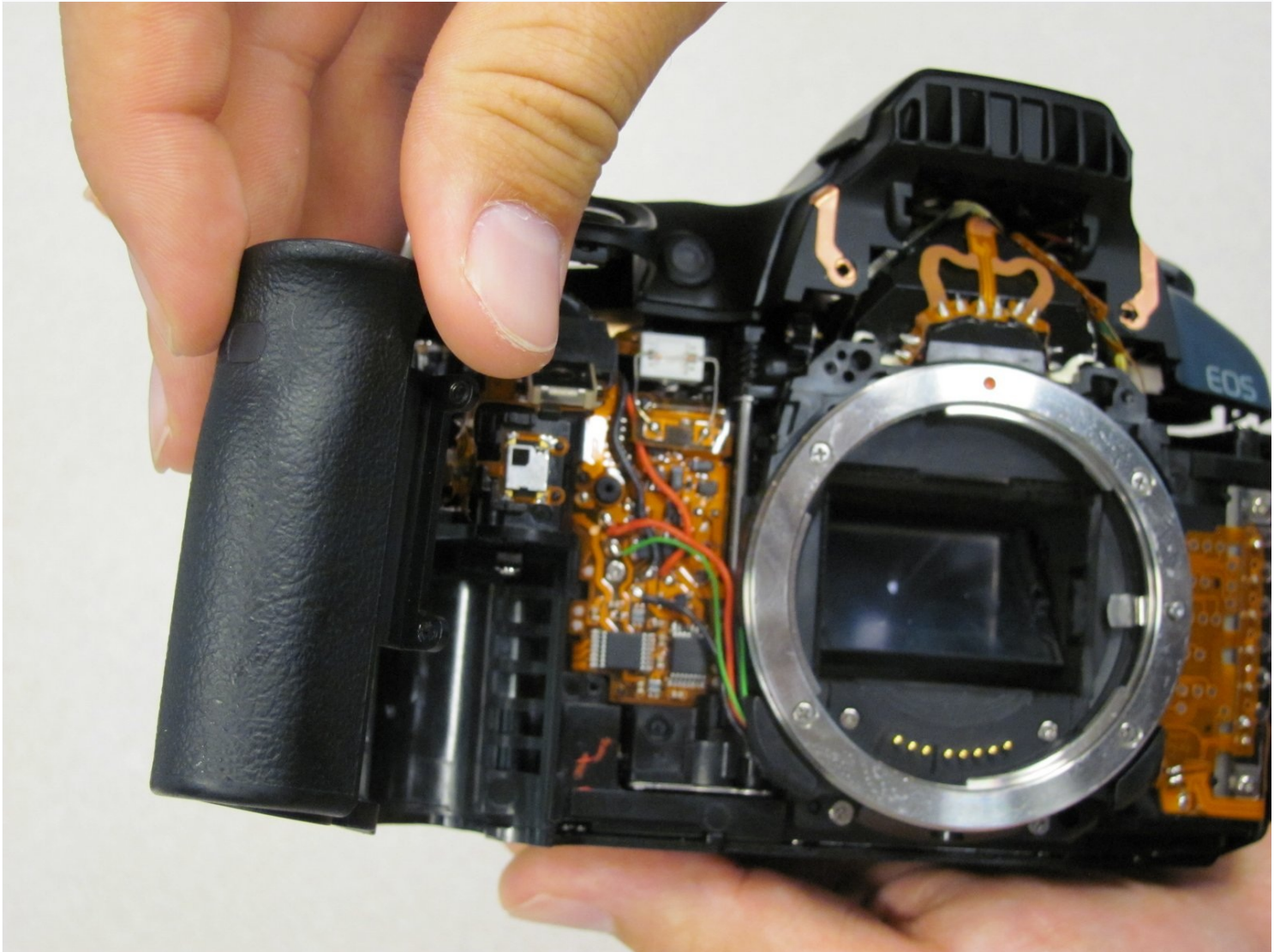




# Canon EOS 30 Grip Replacement

Removing the grip is necessary to reach the...

Written By: Jackie



# INTRODUCTION

Removing the grip is necessary to reach the battery door. This process is safe and easy.

---

## TOOLS:

[Phillips #00 Screwdriver](#) (1)

---

### Step 1 — Front Panel



- Remove the two 4.8 mm black screws above the lens on the front of the camera.

## Step 2



- Remove the 4.3 mm black screw under the lens ring, and the 4.8 mm black screw under the camera.

## Step 3



- Remove the 4.8 mm black screw on the left side of the camera.

## Step 4



- Remove the front panel by lifting it away from the camera's body.

## Step 5 — Top Panel



- Slide the outer eyepiece upward to remove it.

## Step 6



- Remove the two 4.75 mm black screws located on the top of the camera.

## Step 7



- Remove the four 4.3 mm black screws near the bottom corners of the eyepiece at the back of the camera.

## Step 8



- Slowly separate the top panel from the camera by pushing it upward.

⚠ Separating the top panel too far or quickly can damage the ribbon cable and connecting wires that are still attached to the top panel of the camera.

## Step 9 — Side Panel With Remote Control Socket



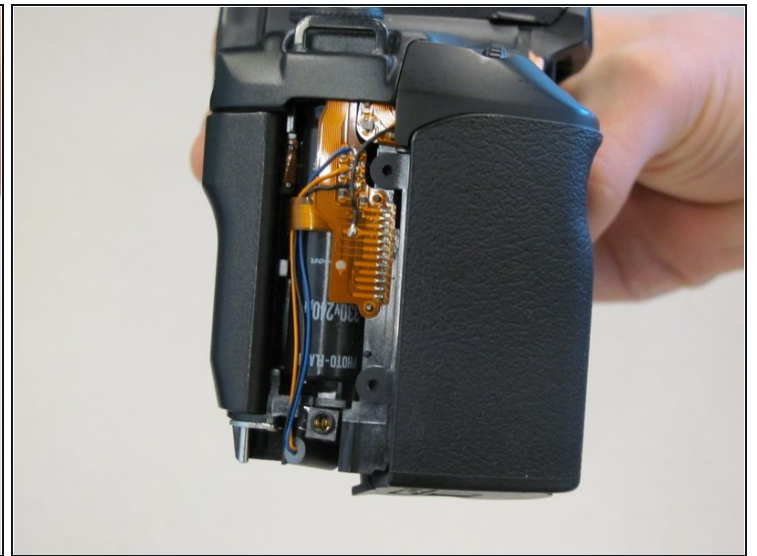
- Remove two 6.5 mm black screws from the panel.

## Step 10



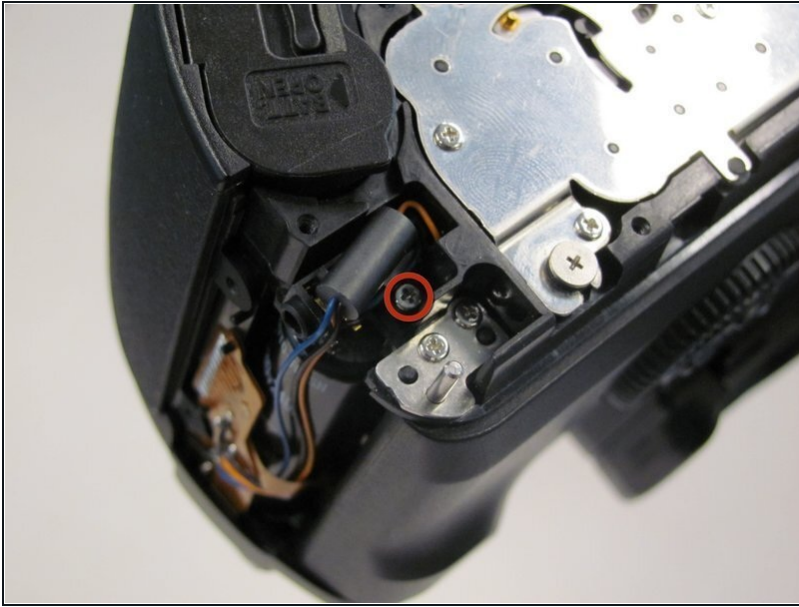
- Remove the plastic remote control socket cap by pulling it straight out.

## Step 11



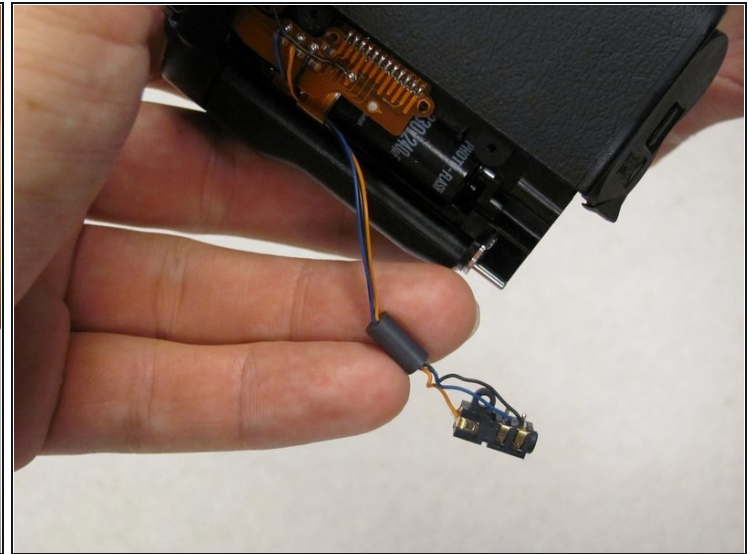
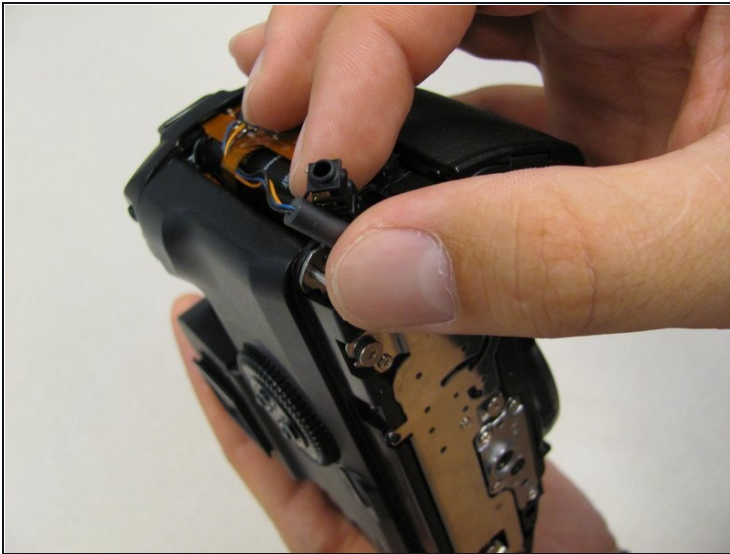
- Slide the panel toward the bottom of the camera to remove.

## Step 12



- Remove the single 4.8 silver screw from the control socket.

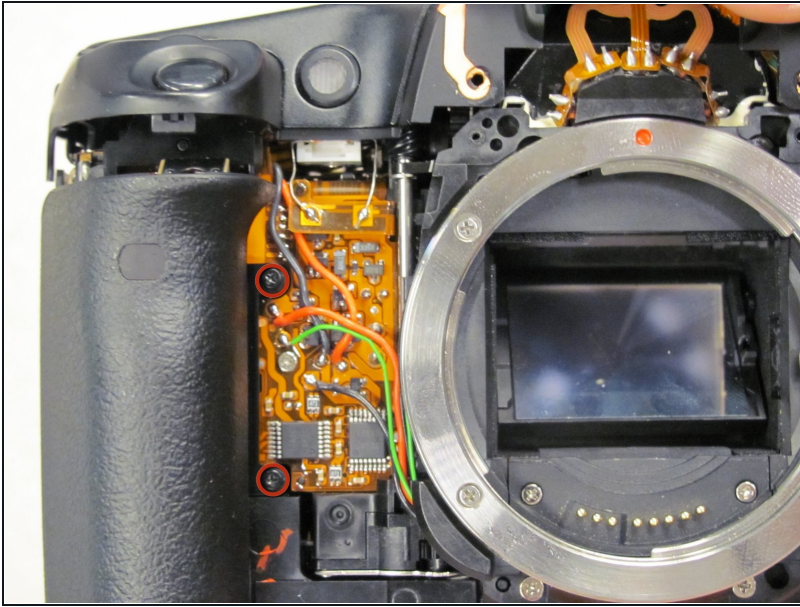
## Step 13



① The control socket is now secure by three wires.

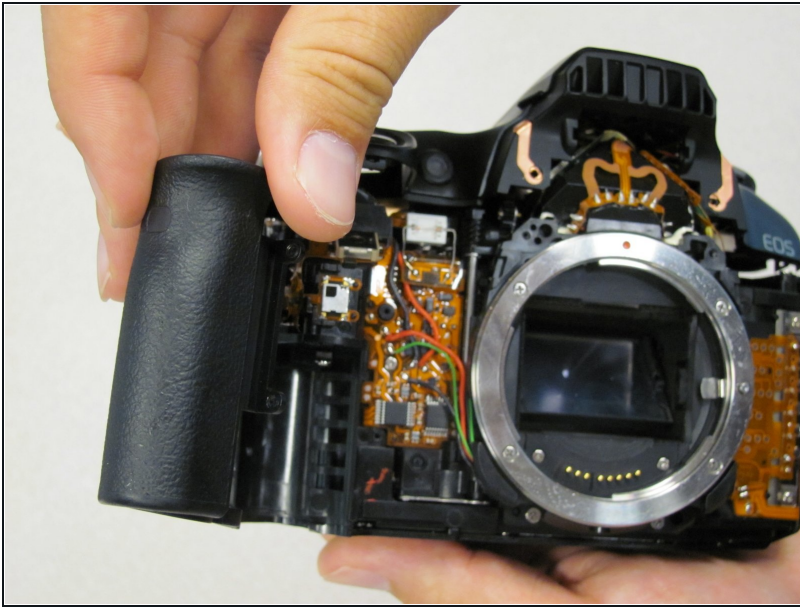
- [Desolder](#) connections to replace the remote control socket.

## Step 14 — Grip



- Remove the two 5.5 mm screws from front of camera.

## Step 15



- Remove grip panel.

---

To reassemble your device, follow these instructions in reverse order.