



Sony Handycam DCR-SR68 HDD Replacement

Written By: Greg Thorburn



TOOLS:

JIS Driver Set (1)

Anti-Static Wrist Strap (1)

Step 1 — HDD

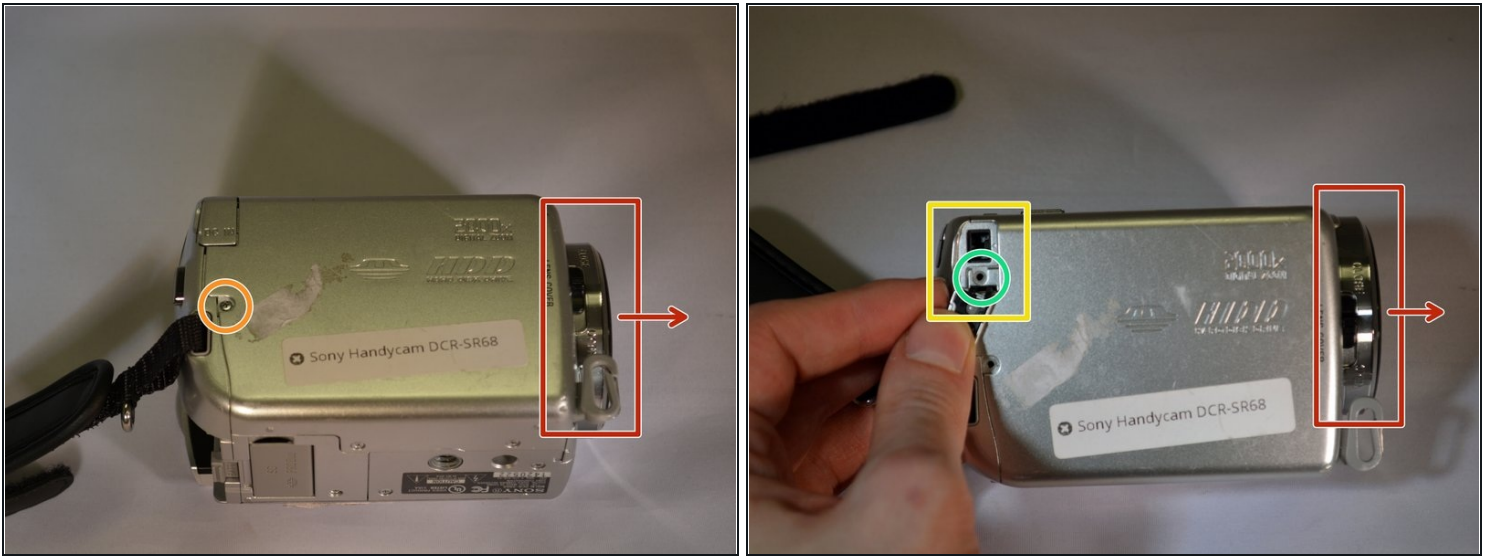


✦ Wash and dry your hands, then put on a properly grounded [anti-static wrist strap](#), before handling internal electronic components. To ground the wrist strap, attach it to the metal chassis of a plugged-in three prong power supply, of a computer for example.

- Unfasten the hand strap.

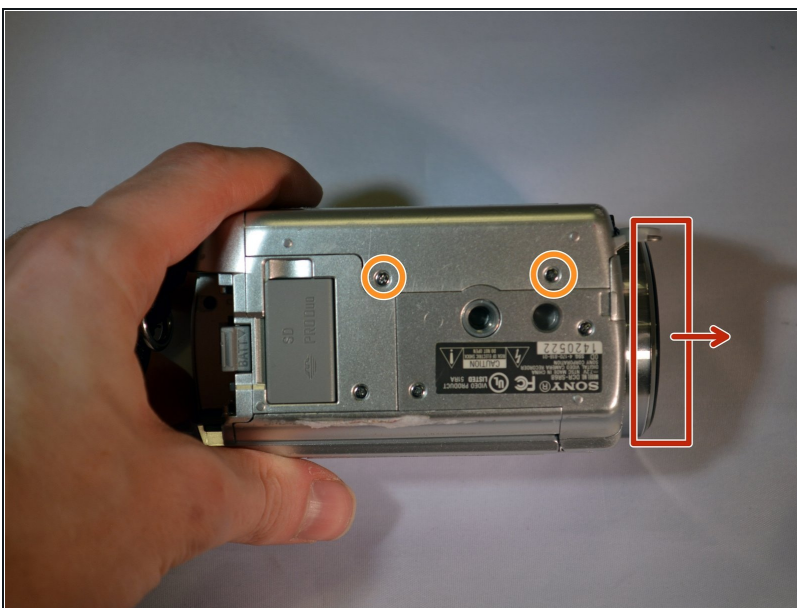
⚠ Remove the battery.

Step 2



- Place device on left side with front lens facing right.
- Using a JIS size #00 precision Phillips screwdriver, unscrew the left middle 3mm Phillips screw.
- Open the "DC IN" plastic tab (Second 3mm Phillips screw is revealed).
- Unscrew the second 3mm Phillips screw.

Step 3



- Turn device over onto its top with the front lens facing right.
- Unscrew the top left and top right 3mm Philips screws.
- ① The right side case panel is now unfastened (the case panel facing up in the photo).

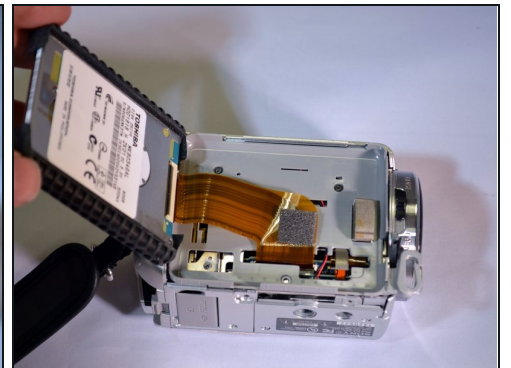
Step 4



- Remove the right side case panel by pulling up.

① The Hard Drive (HDD) is now revealed.

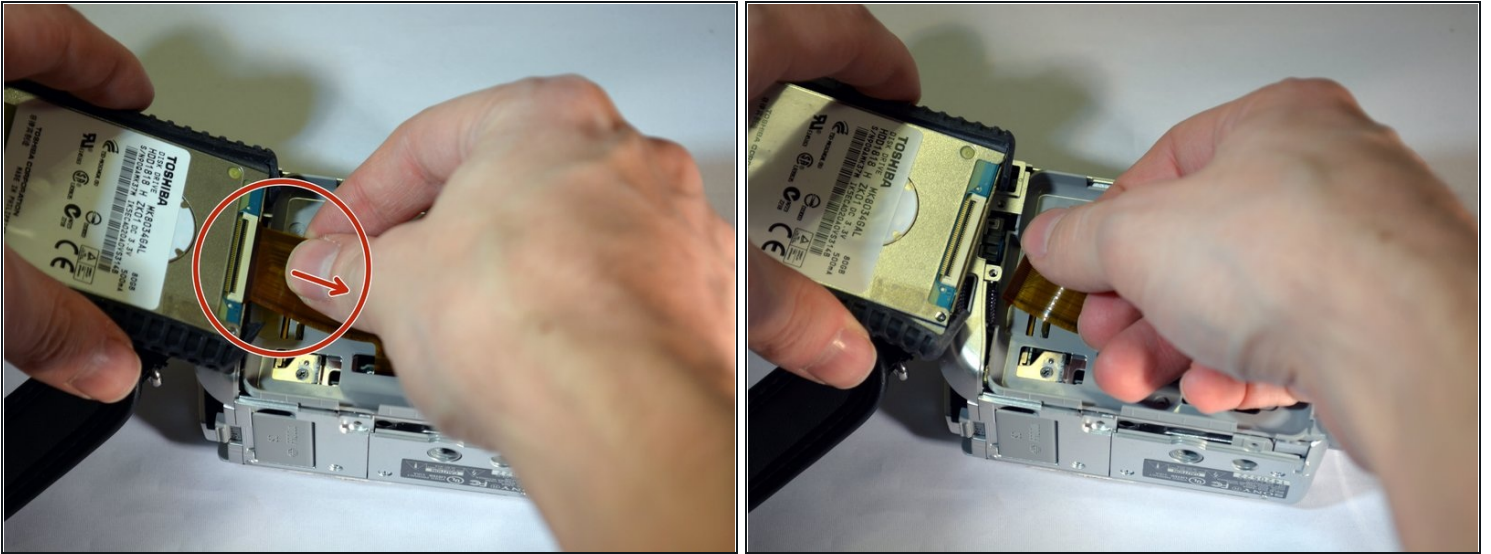
Step 5



- Using your fingers, lift the HDD from its right end, pivoting on its left end.

① The HDD ribbon wire is now exposed.

Step 6



- While securely holding the HDD in your left hand, use the soft pad of your right hand fingers to gently pull the ribbon wire out of its socket, toward your right.
- ① The HDD is now free from the device.
- Replace HDD.

To reassemble your device, follow these instructions in reverse order.