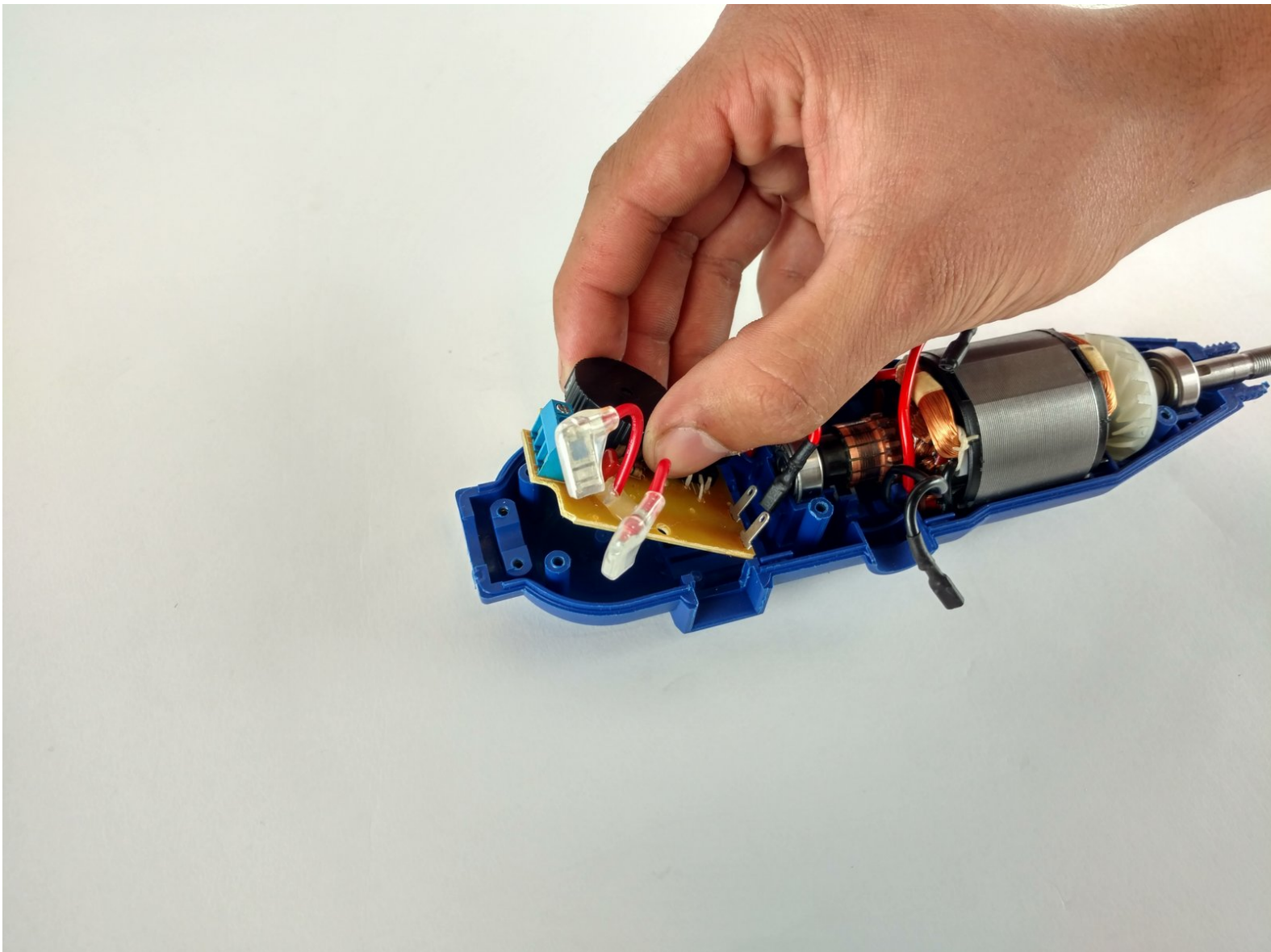




Wen 2307 Speed Adjustment Assembly Replacement

This guide will demonstrate how to replace the speed adjustment circuit board on the Wen 2307 Rotary Tool.

Written By: Dominick Chavez



INTRODUCTION

If the device is not changing speed it may be because of a broken speed adjuster.



TOOLS:

- [Flathead 3/32" or 2.5 mm Screwdriver](#) (1)
 - [Phillips #2 Screwdriver](#) (1)
-

Step 1 — Front Panel



- Unscrew the locking sleeve.

Step 2



- Remove the hanging clip.

Step 3



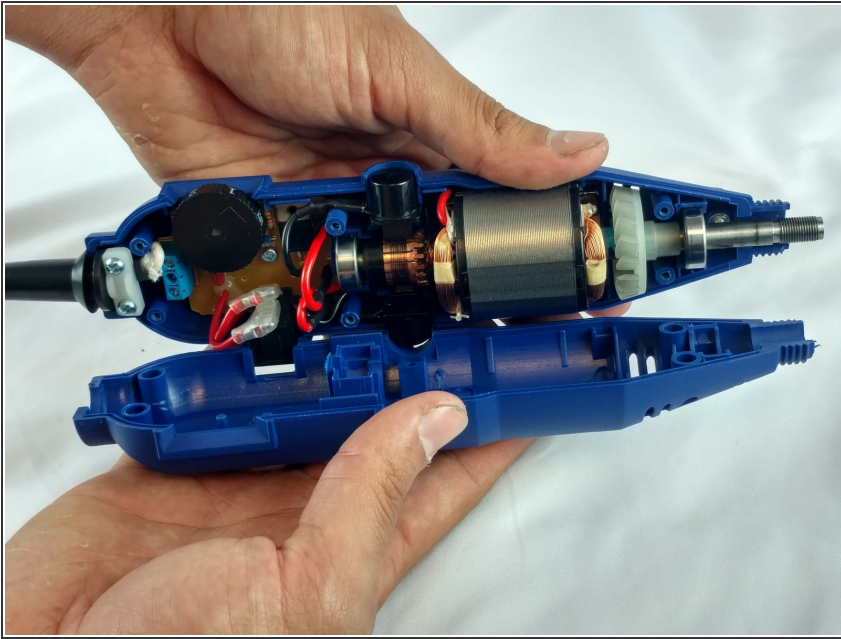
- Unscrew the six 8mm PH2 screws.

Step 4



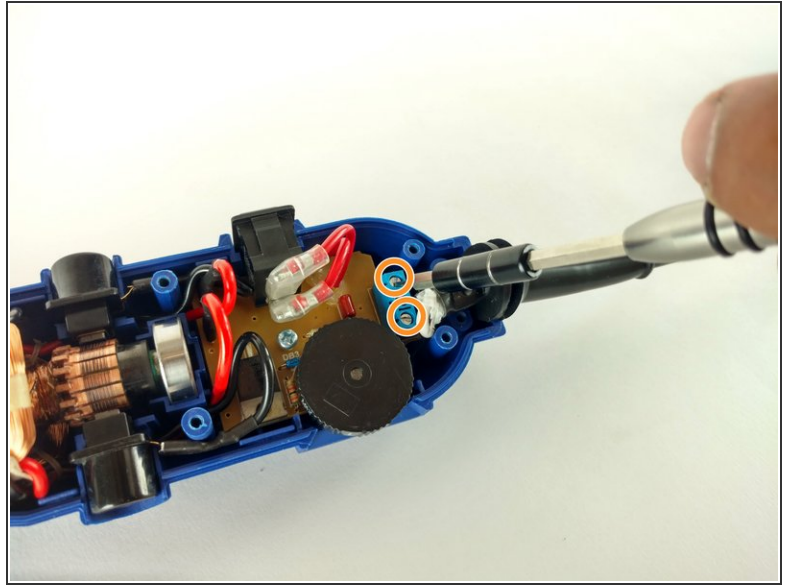
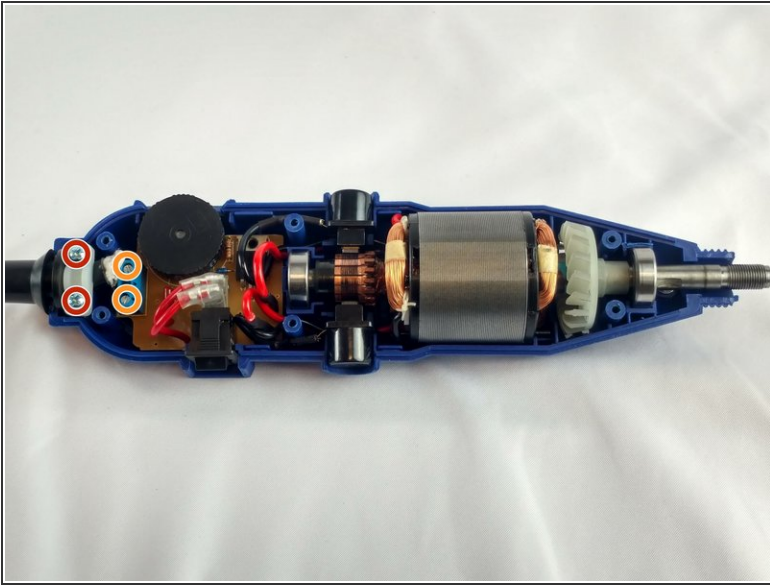
- While pressing the spindle lock button, unscrew the collet nut and remove it along with the brass collet.

Step 5



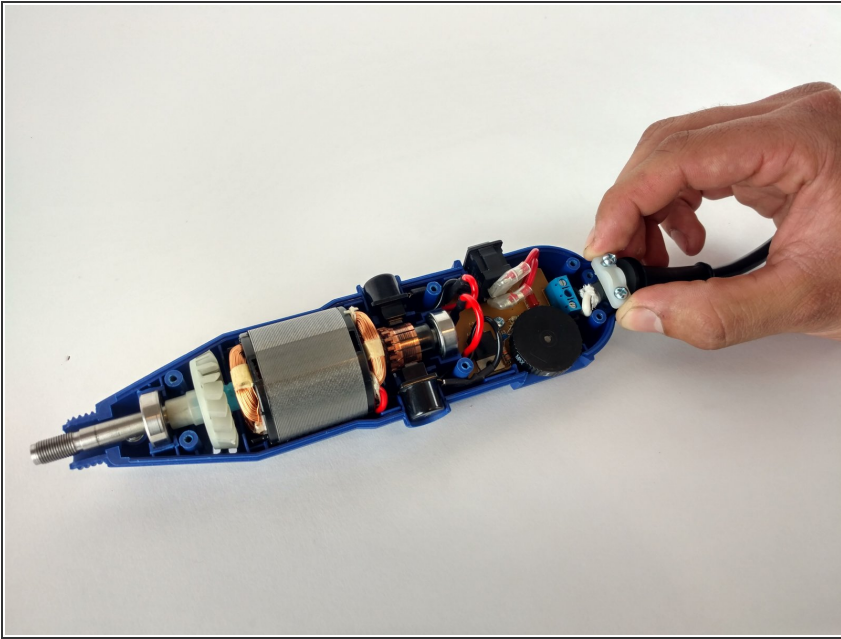
- To remove the front panel, pry the device apart while holding the device with the other hand.
- ⓘ The front panel should come out easily.

Step 6 — Power Cable



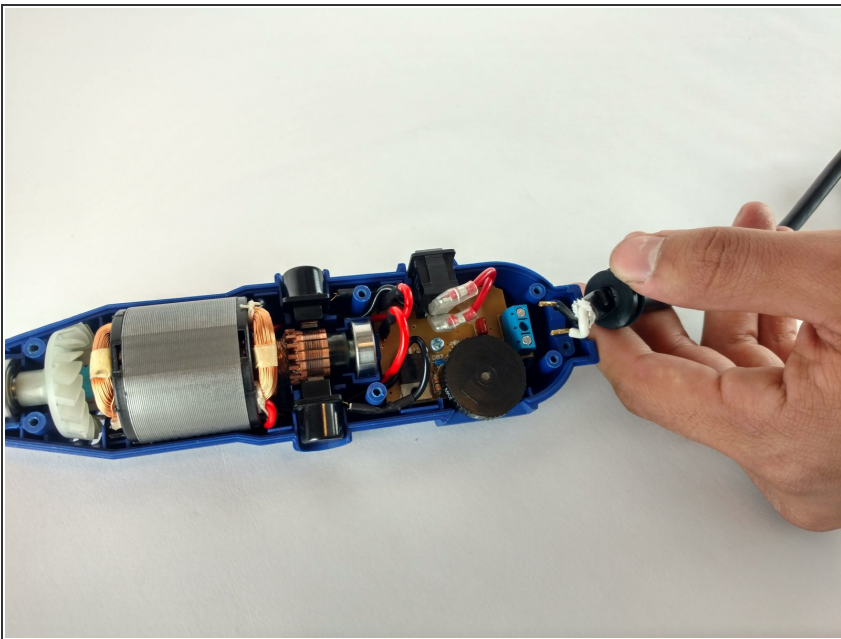
- Identify the screws.
 - Unscrew the two 3mm phillips PH2.
 - ⓘ Don't forget to put them appart from the ones unscrewed before.
 - ⓘ Don't forget to put them appart from the ones unscrewed before.
 - Phillips PH2
 - Flathead 2.5mm

Step 7



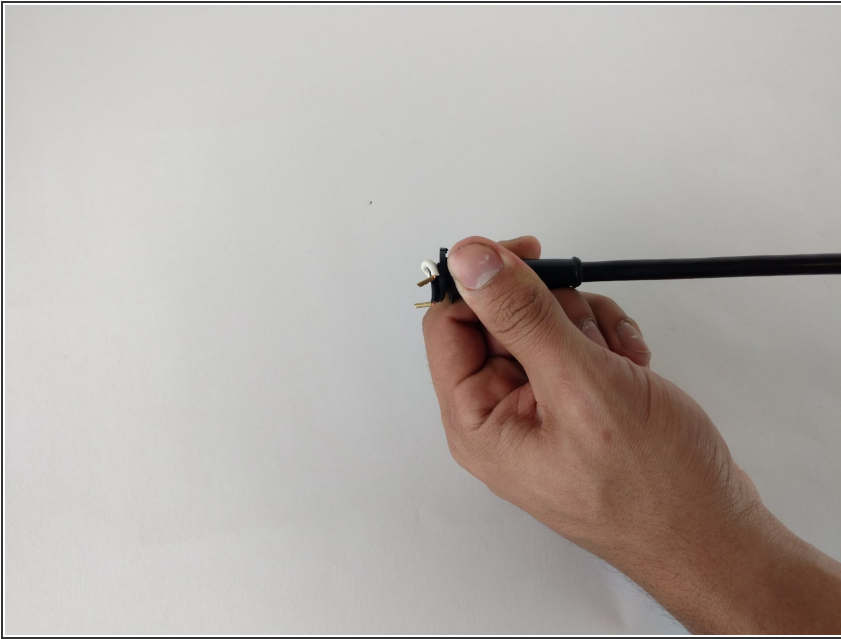
- Remove the place boar carefully.

Step 8



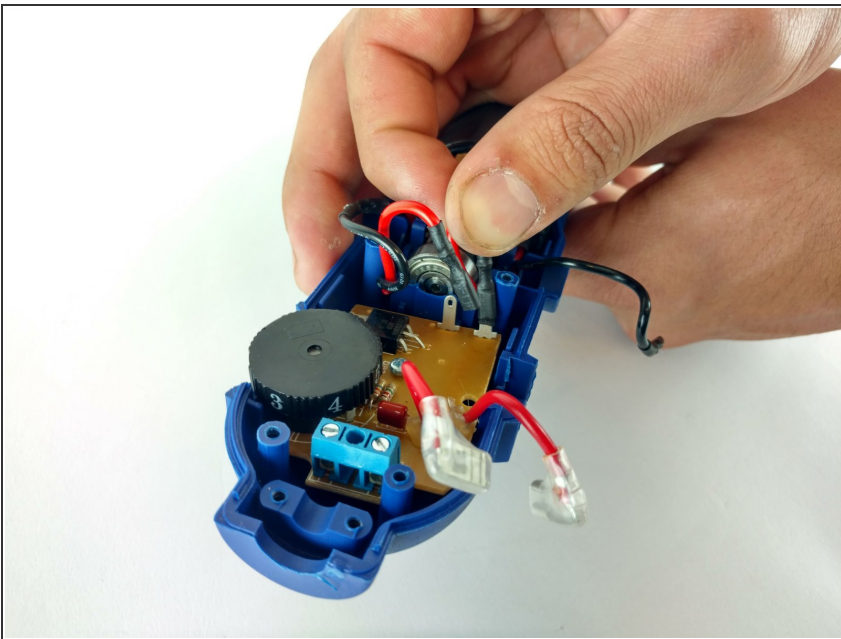
- Pull out the power cable connectors.

Step 9



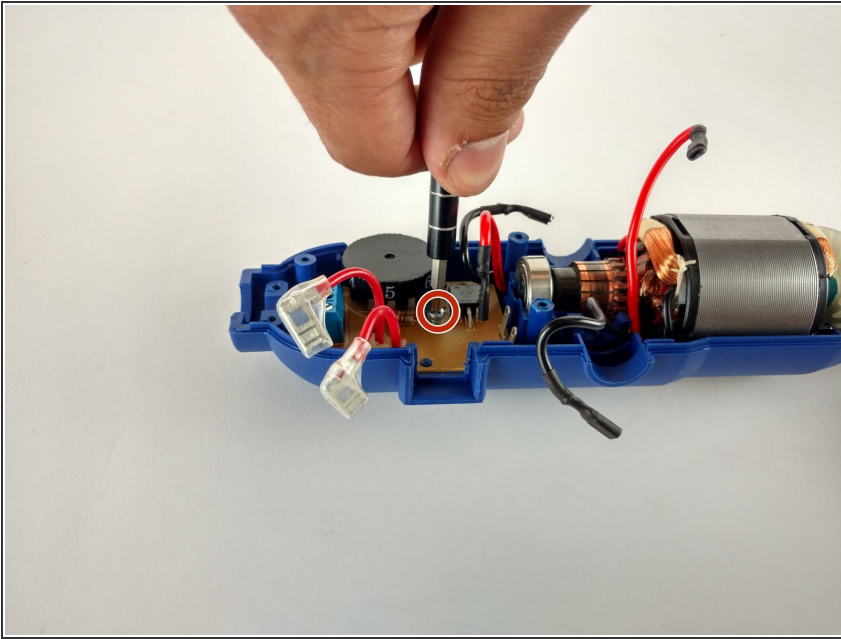
- Pull out the cord sleeve for the new cable replacement.

Step 10 — Speed Adjustment Assembly



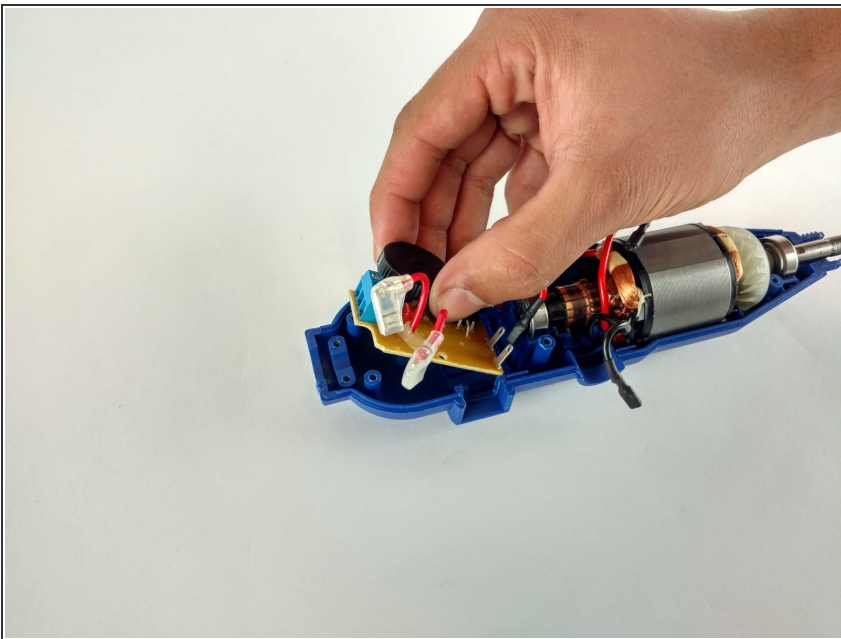
- Remove the connected wiring from the circuit board.

Step 11



- Remove the single 4mm screw retaining the circuit board.

Step 12



- Gently pry the circuit board from the back piece.

To reassemble your device, follow these instructions in reverse order.