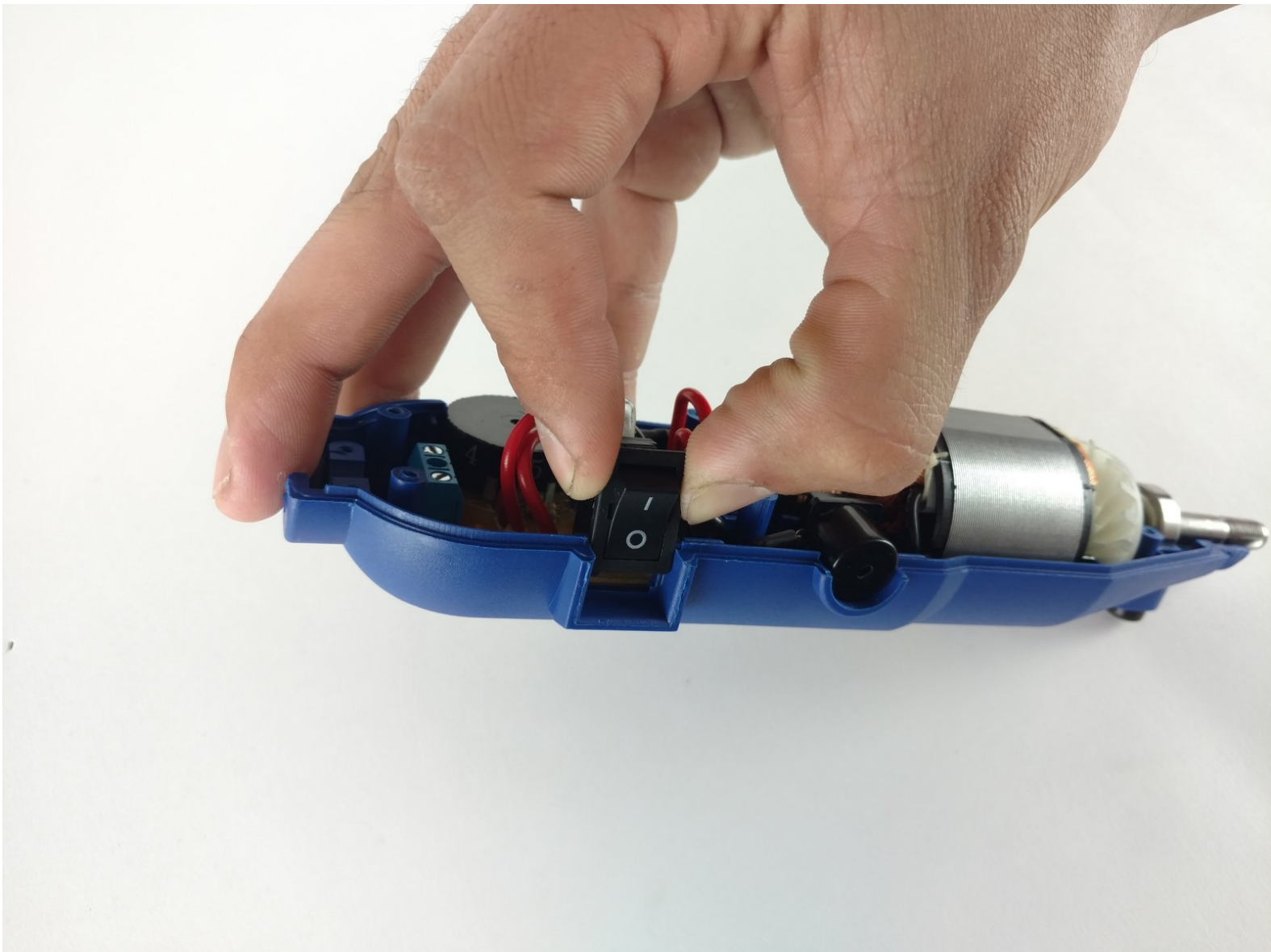




# Wen 2307 Power Switch Replacement

This guide is here to help the user replace the power switch on their Wen 2307 rotary tool.

Written By: Joshua Bowery



---

## INTRODUCTION

One possible reason for your device not powering on is a damaged power switch. Use this guide to replace it.



### TOOLS:

- [Phillips #2 Screwdriver](#) (1)
-

## Step 1 — Front Panel



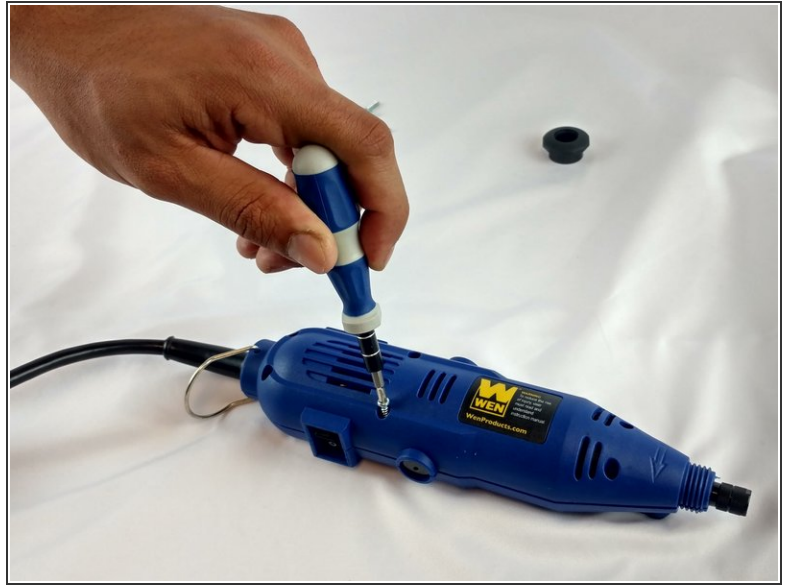
- Unscrew the locking sleeve.

## Step 2



- Remove the hanging clip.

### Step 3



- Unscrew the six 8mm PH2 screws.

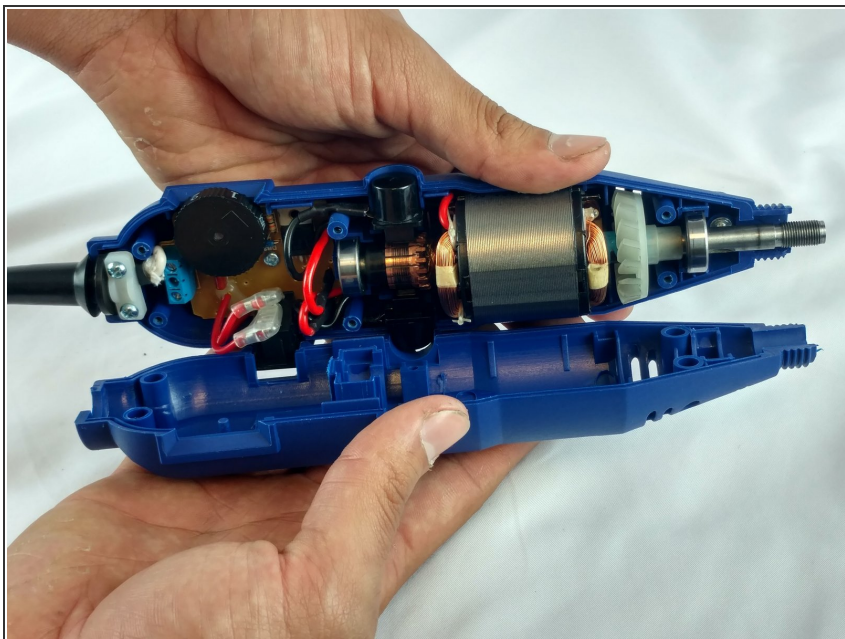
### Step 4



- While pressing the spindle lock button, unscrew the collet nut and remove it along with the brass collet.

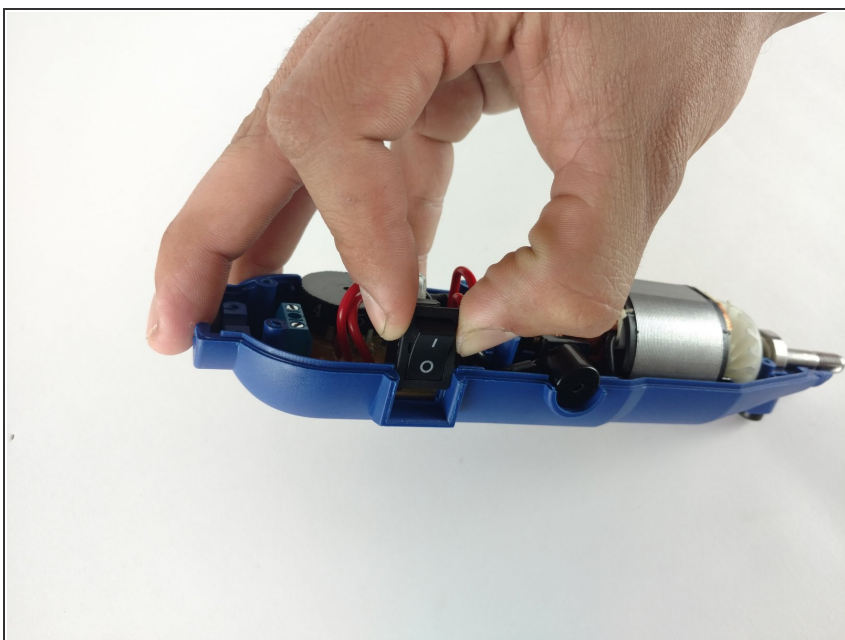


## Step 5



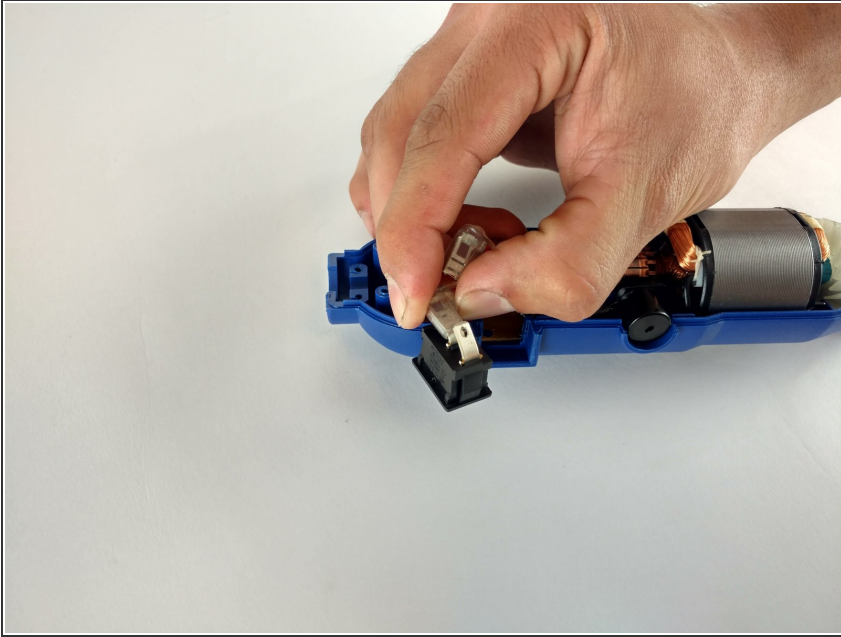
- To remove the front panel, pry the device apart while holding the device with the other hand.
- ⓘ The front panel should come out easily.

## Step 6 — Power Switch



- Firmly grasp and lift out power switch.

## Step 7



- Firmly grasp and disconnect cables.
- ⓘ Make sure to mark your cable positions so you do not reverse them when putting back together.

To reassemble your device, follow these instructions in reverse order.