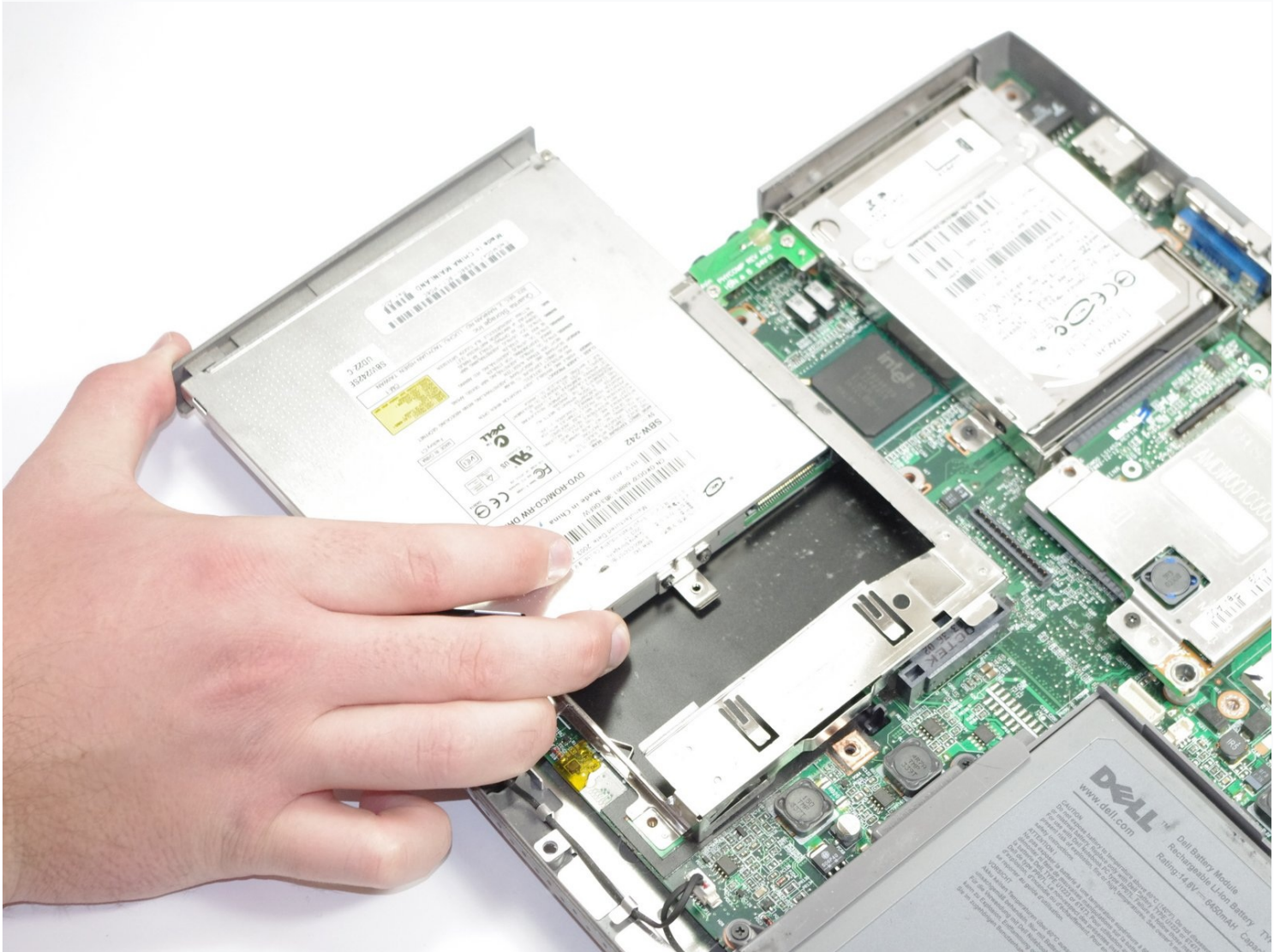




Dell Inspiron 5100 PP07L CD Drive Replacement

You would learn how to remove the CD Drive

Written By: May Chauvin



INTRODUCTION

You would learn how to remove the CD Drive

TOOLS:

Phillips #1 Screwdriver (1)

Spudger (1)

Step 1 — Keyboard



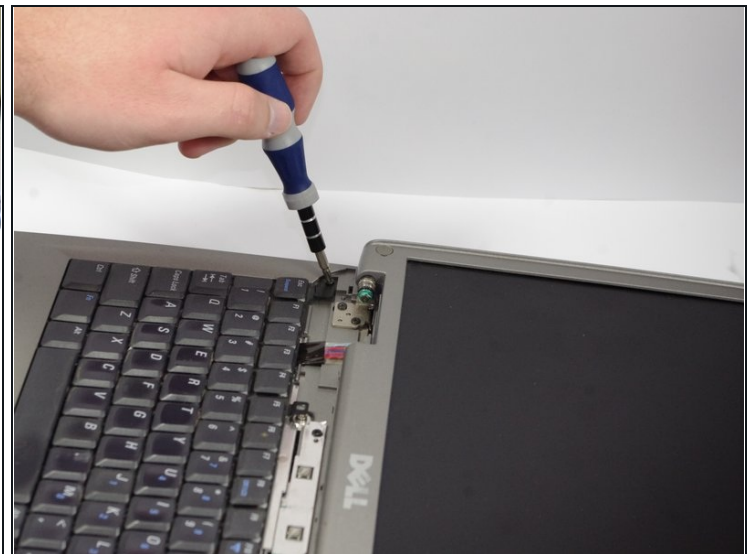
- Remove battery
- Open screen so that it lies flat.

Step 2



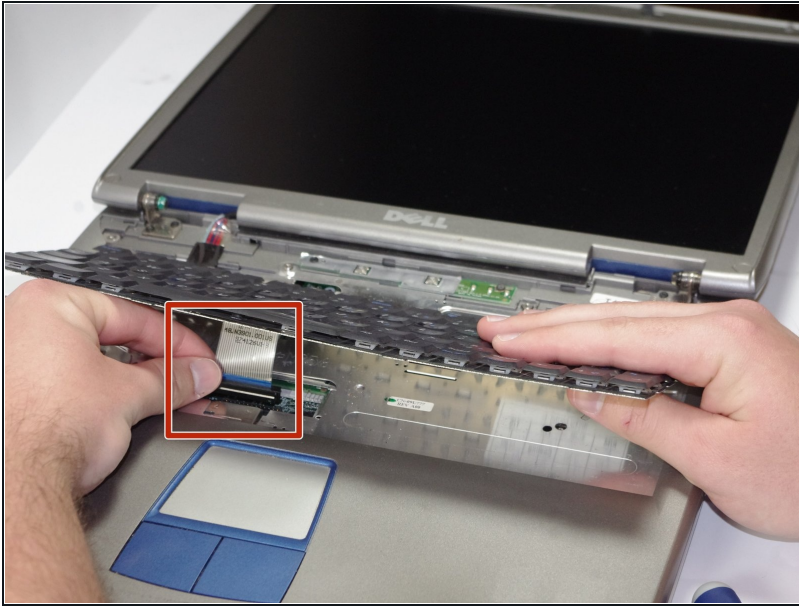
- Starting from the right side of the hinge cover, use the flat end of the spudger to pry up the hinge cover and gently remove it.

Step 3



- Using a Phillips screwdriver remove the four M2 x 3-mm screws holding in the keyboard.

Step 4



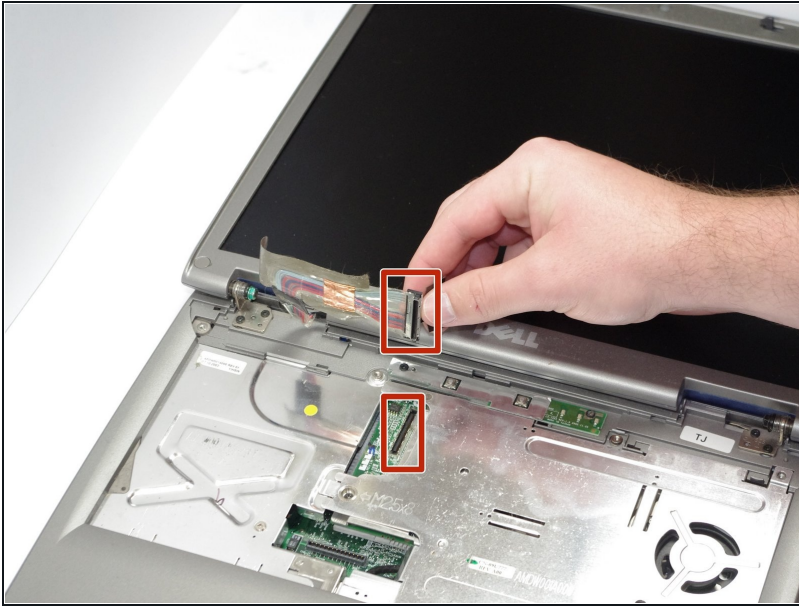
- Lift keyboard and detach the interface connector.
- ⓘ Take extra care when removing and handling the keyboard. The key caps on the keyboard are fragile and easily come off.

Step 5 — Screen



- Using a Phillips screwdriver remove the two screws (5.8mm) located at the rear of the laptop.

Step 6



- Detach the screen connector.

Step 7



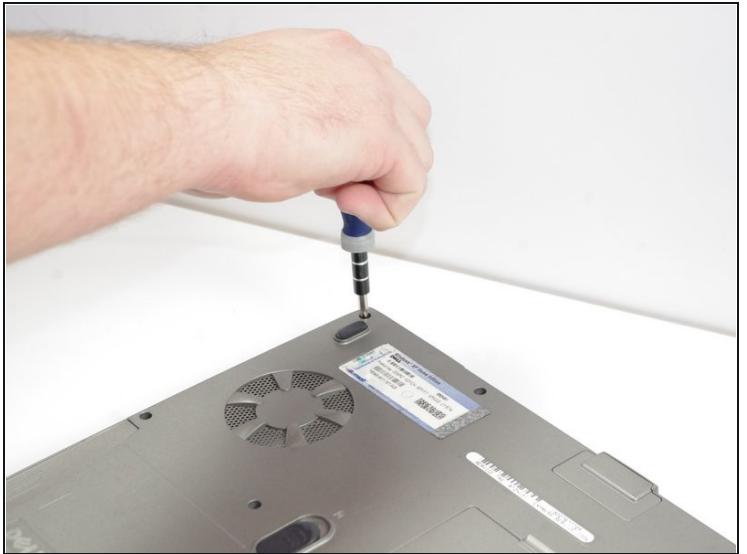
- Using a Phillips screwdriver remove the four screws (5.8 mm) located at hinges of the screen.

Step 8



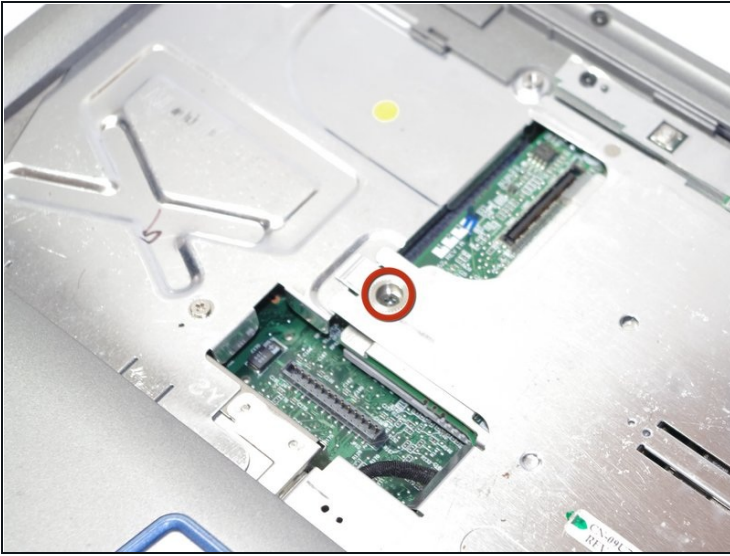
- Lift and remove display screen.

Step 9 — CD Drive



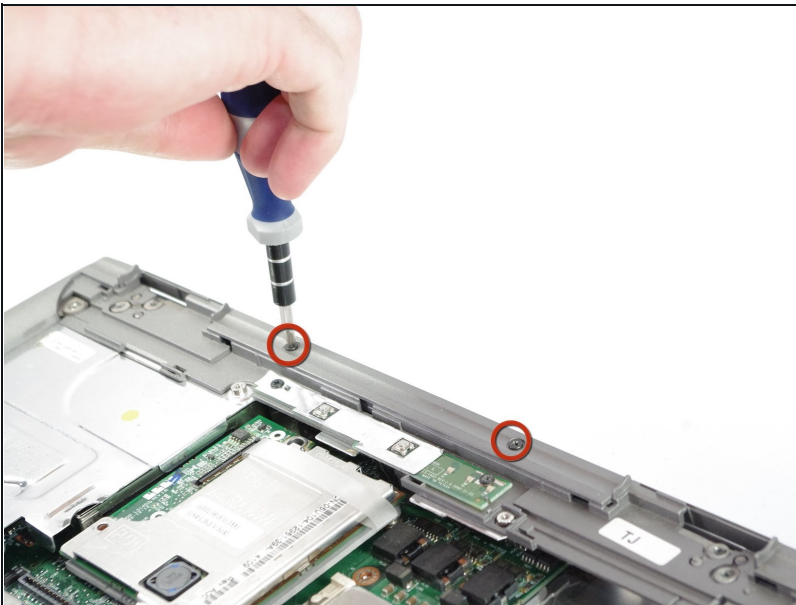
- Flip to the back side of the laptop.
- Remove thirteen screws (8.6mm).
- If battery has not yet been removed, remove it now and remove single silver-colored screw at top of empty battery bay.

Step 10



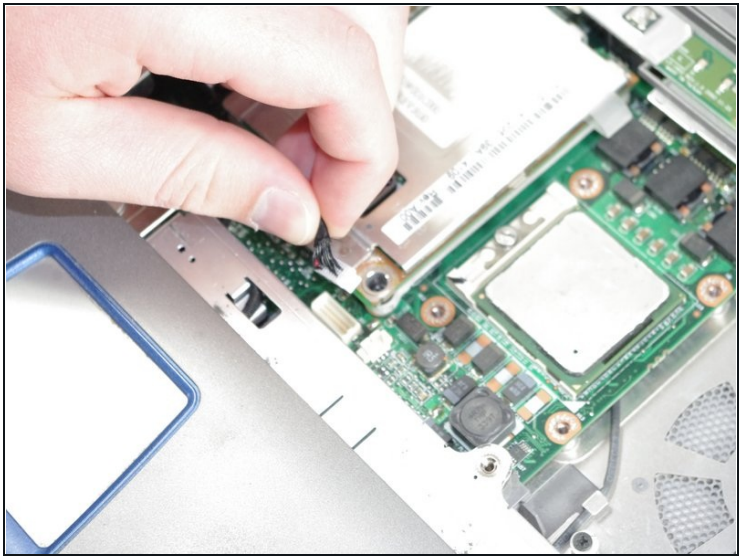
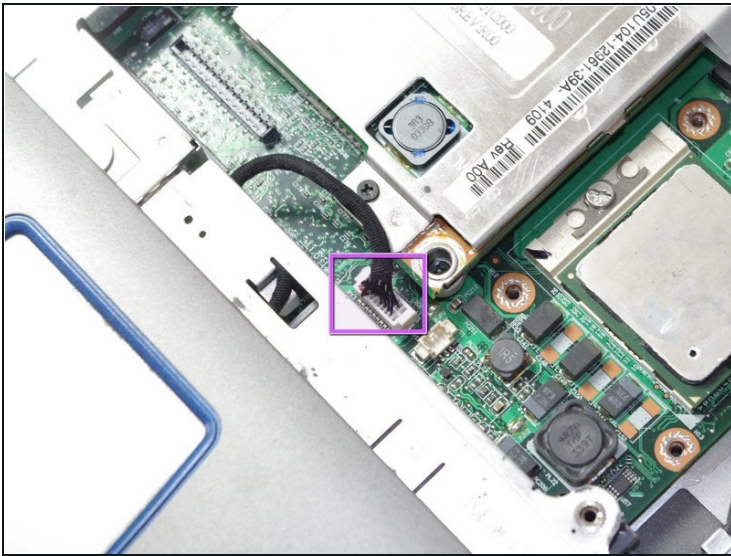
- Remove one screw (8.6 mm) on metal plating.
- Remove the metal plating.

Step 11



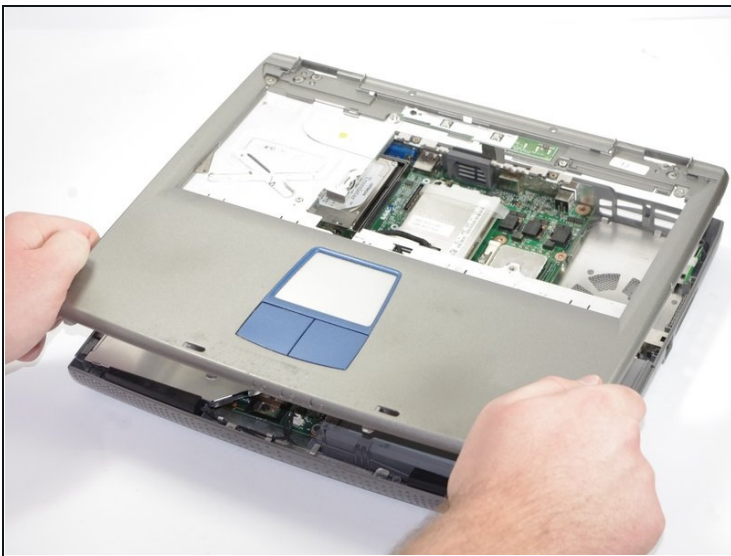
- Remove two screws (5.8mm)

Step 12



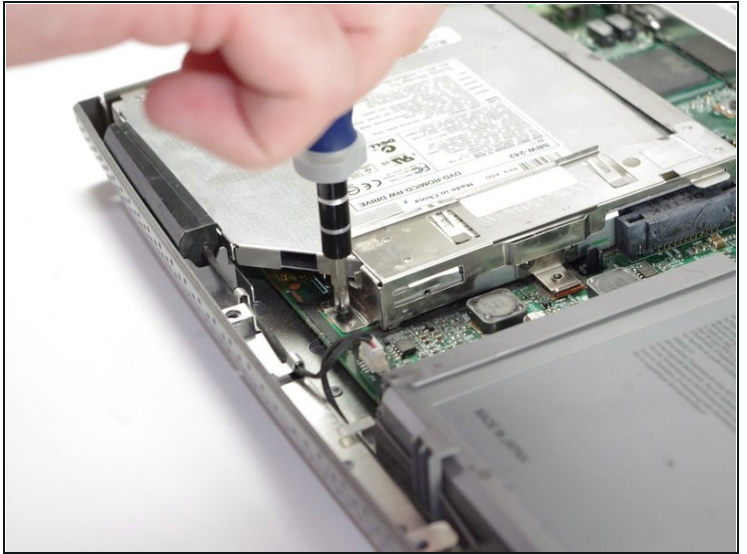
- Disconnect cable.

Step 13



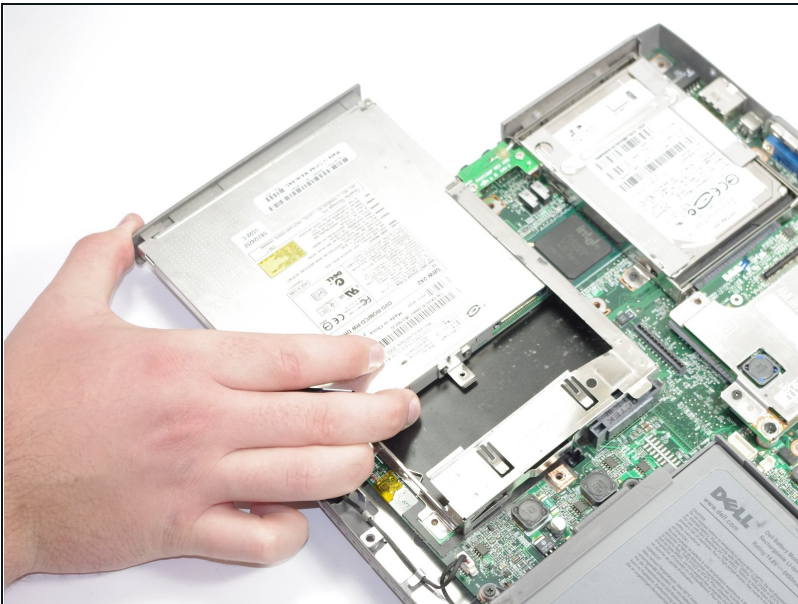
- Make sure that single silver-colored screw has been removed from empty battery bay
- Remove top cover by lifting the edges upward.

Step 14



- Remove CD drive plating screw (5.8mm)

Step 15



- Slide outwards to remove

To reassemble your device, follow these instructions in reverse order.