



iPhone 5s Dock Teardown

This teardown is designed to have a peek into...

Written By: ma4ax



INTRODUCTION

This teardown is designed to have a peek into the device.



TOOLS:

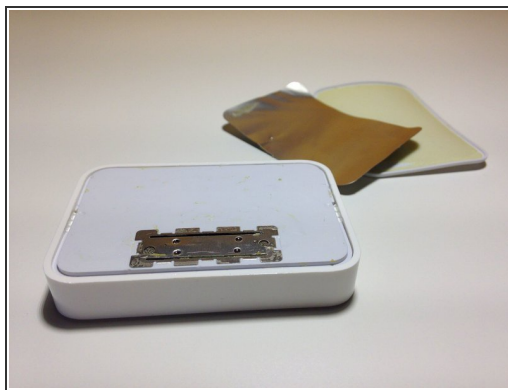
- [Essential Electronics Toolkit](#) (1)
-

Step 1 — iPhone 5s Dock Teardown



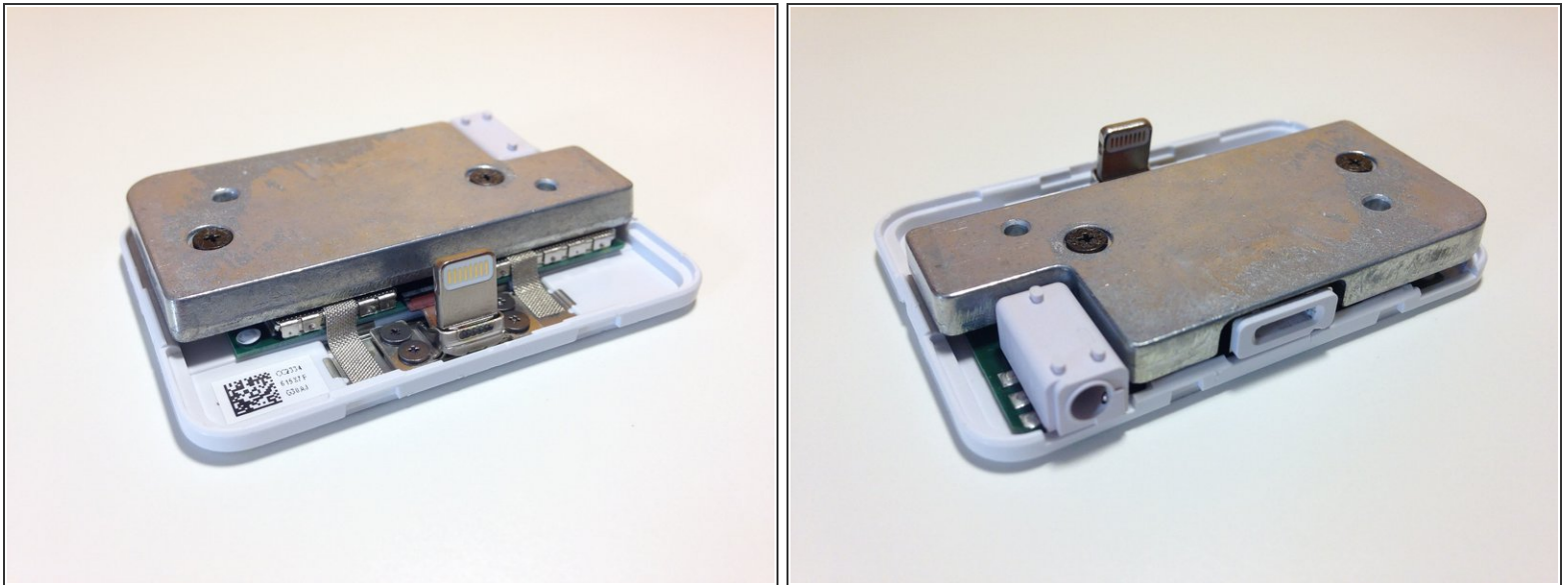
- Today's teardown subject will be this iPhone 5s dock - it's visually similar to the other docks from the past, but with a Lightning connector instead.
- ⓘ This teardown was edited in 2016 (that means lots of 2016 references.)
 - This looks like an indented iPhone 6 dock.

Step 2



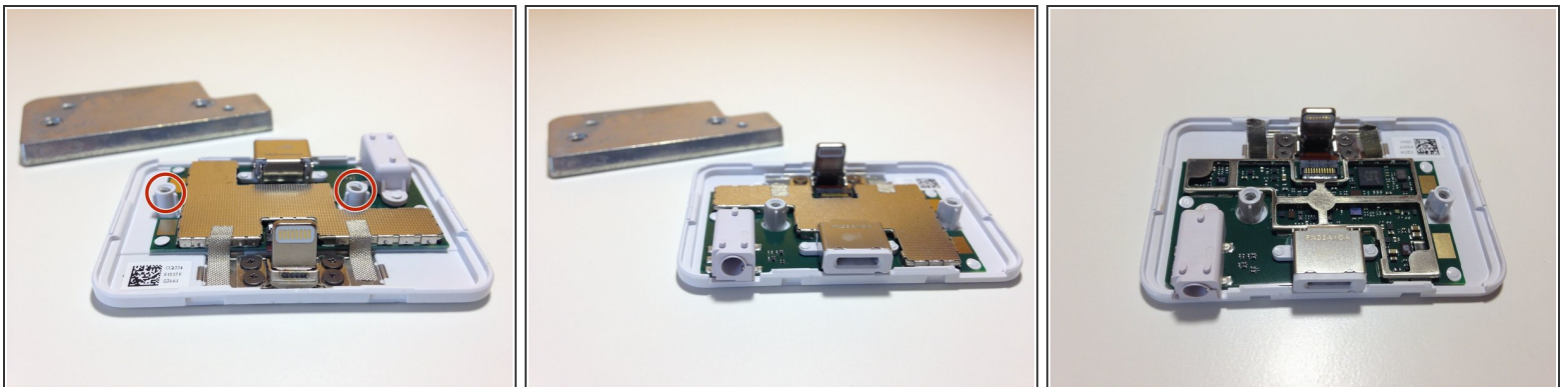
- This iPhone dock is perfectly indented to fit an iPhone 5s.
- Some (weaker) adhesive covers the bottom and it's a simple task to take it off using a spudger, or another flat, flexible tool.

Step 3



- Use a spudger to carefully detach the cover from the base.

Step 4



- You can now remove the two screws that secure the weight to the plastic housing.