



Olympus C-765 Status LED Replacement

The LED indicates the status of the camera and...

Written By: Mason Morgan



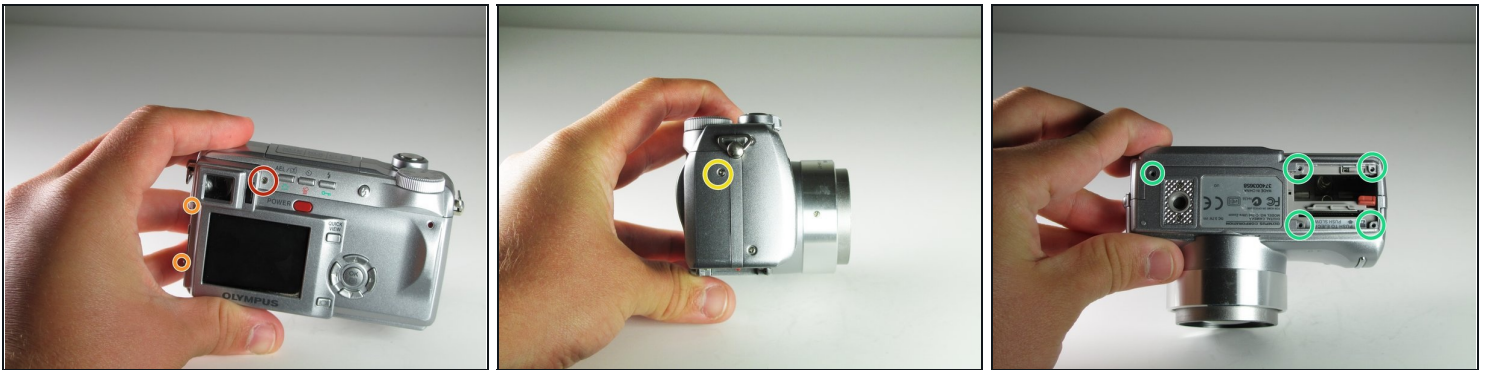
INTRODUCTION

The LED indicates the status of the camera and blinks to show activity. Despite the part's simple nature, the repair process is quite difficult. Replacement requires soldering and diving deep into the inner workings of the camera.

TOOLS:

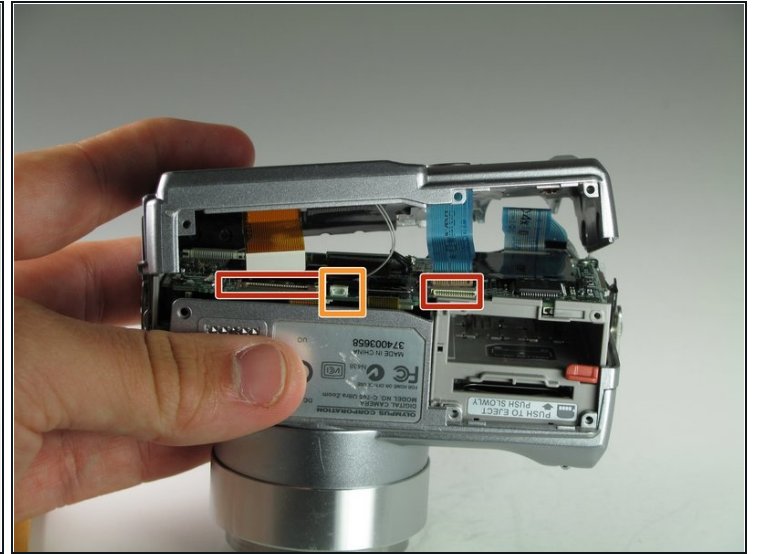
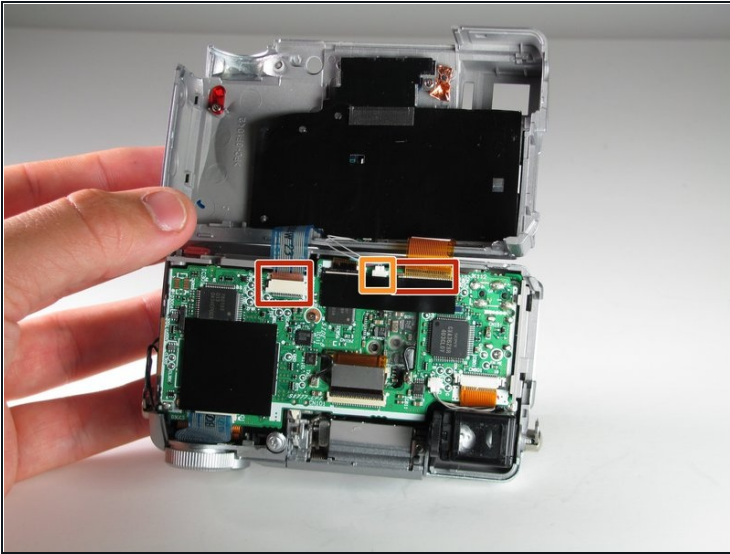
Phillips #00 Screwdriver (1)

Step 1 — Motherboard



- Use a Phillips #00 screwdriver to remove the single 4mm screw located directly to the right of the viewfinder on the back of the camera.
- Remove the two 2mm screws from the left side panel.
- Remove the single 3mm screw from the right side panel.
- Remove the five 3mm screws from the bottom of the camera.

Step 2



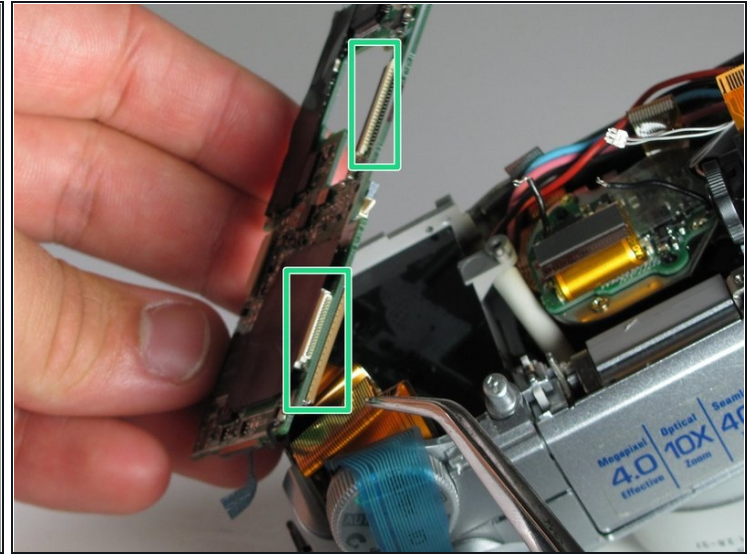
- Rock the two ribbon cables gently out of their sockets.
- ① For more on disconnecting ribbon cables, look [here](#).
- Grasp and pull the white cable out of its clip with metal [tweezers](#).
- Remove the back panel completely.

Step 3



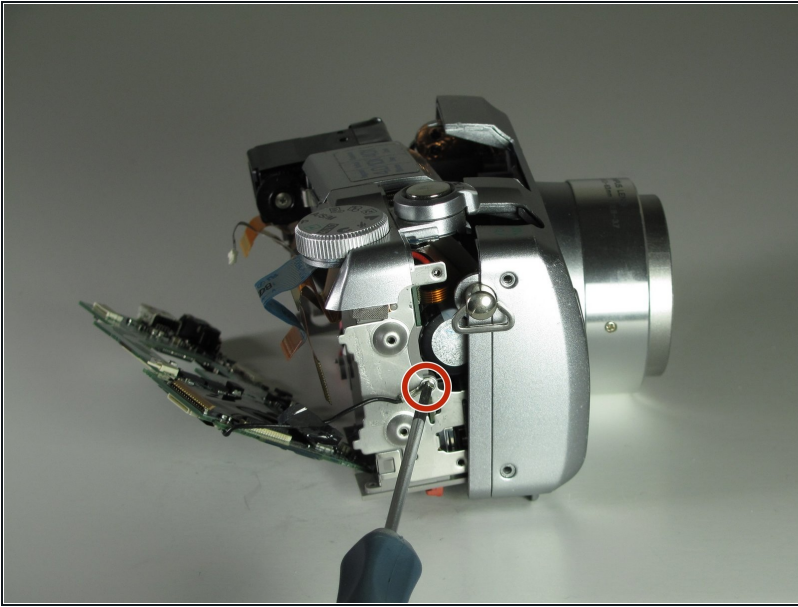
- Peel off the black plastic sheets.
- Use the Phillips #00 screwdriver to remove the two 3mm screws holding the motherboard in place.

Step 4



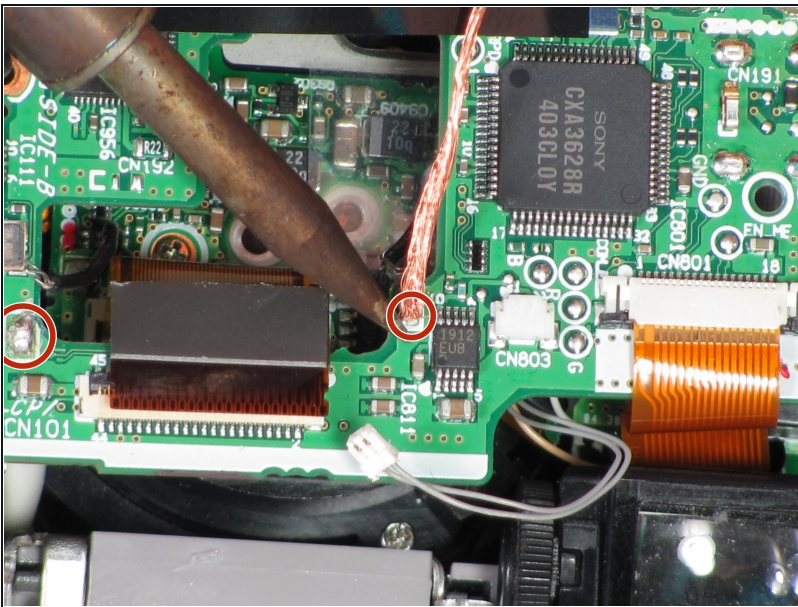
- Remove the ribbon cable directly below the viewfinder.
 - Detach the white plastic clip from its socket with a pair of tweezers.
 - Disconnect the ribbon cable from the center of the board, near the central hole.
 - Disconnect the three ribbon cables from the top right of the motherboard, near the selector wheel. One is on the top of the board, and the other two are on the underside.
- ① For more information on disconnecting ribbon cables, look [here](#).

Step 5



- Remove the single 3mm ground screw attached to the right side of the camera body using the Phillips #00 screwdriver.

Step 6

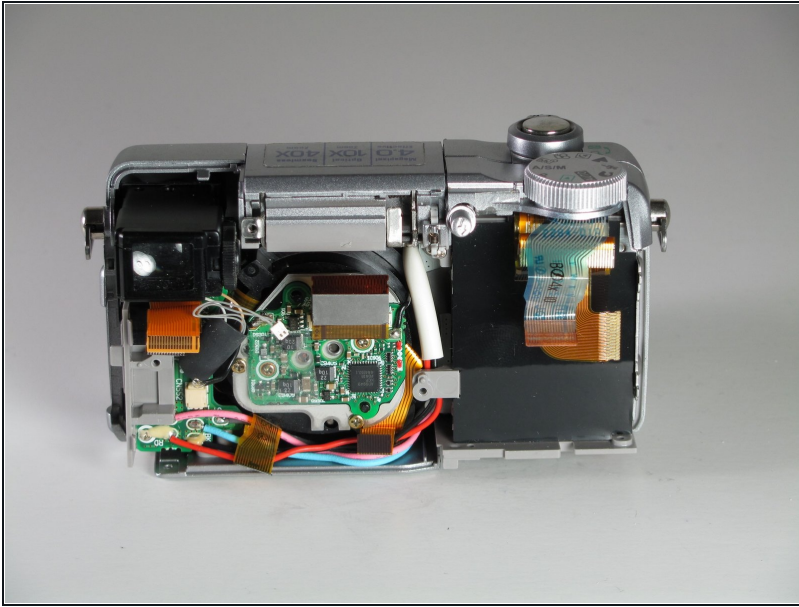


- Use the soldering iron to desolder the connections from the motherboard.

① For more information on desoldering, look [here](#).

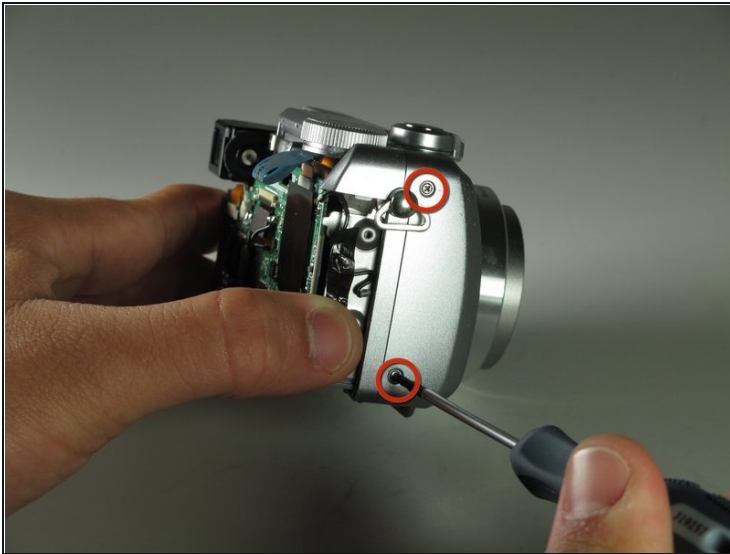
⚠ When soldering, avoid touching any of the other components with the soldering iron to prevent damage to the motherboard.

Step 7



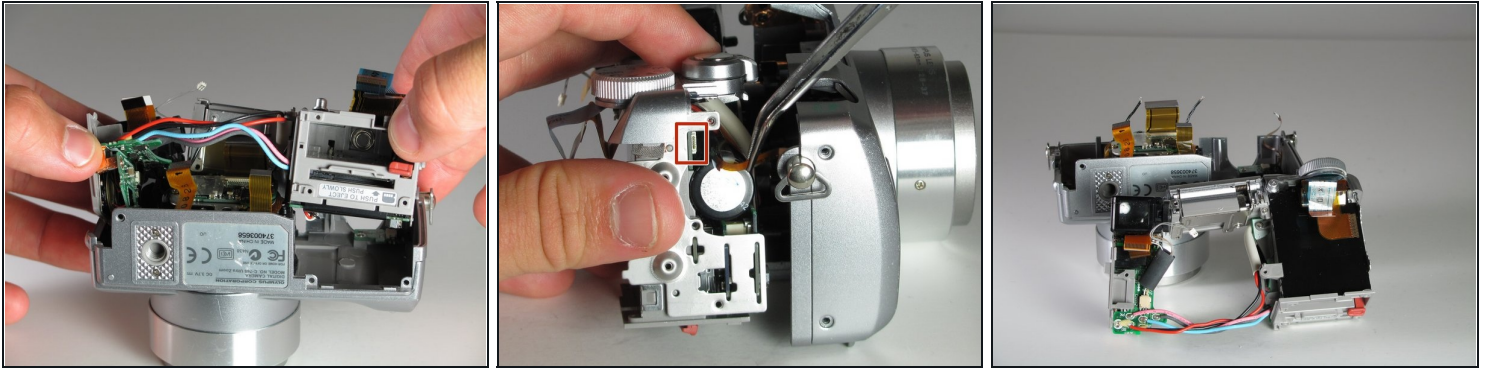
- Remove the motherboard from the camera.

Step 8 — Status LED



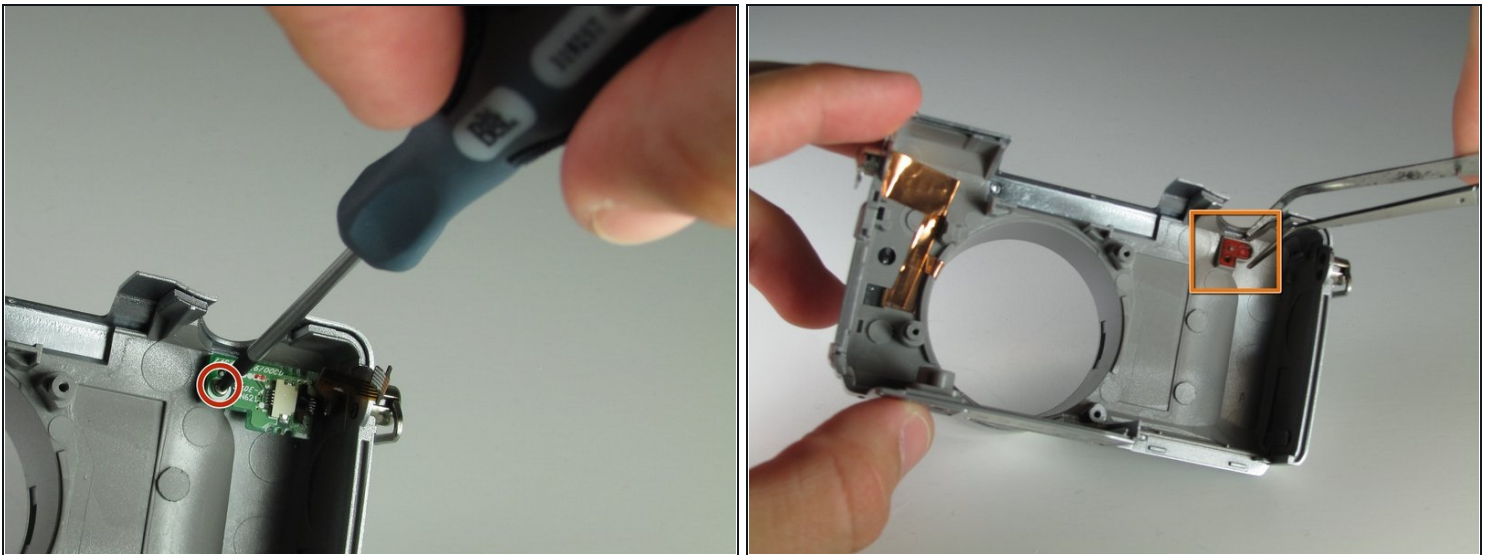
- Remove most of the camera components from the front of the case.
- Remove the two 3 mm screws from the right side of the casing using a Phillips #00 screwdriver.
- Pop the flash up to get access to the two body screws underneath.
- Remove the two 3mm screws from under the flash using a Phillips #00 screwdriver.

Step 9



- Gently pull on the battery casing and the A/V ports to remove the connected components.
- Remove the small ribbon cable, from the right side of the casing.

Step 10



- Remove the LED circuit board.
- Remove the single 3mm screw using a Phillips #00 screwdriver.
- Use a pair of [tweezers](#) to remove the status LED board.

To reassemble your device, follow these instructions in reverse order.