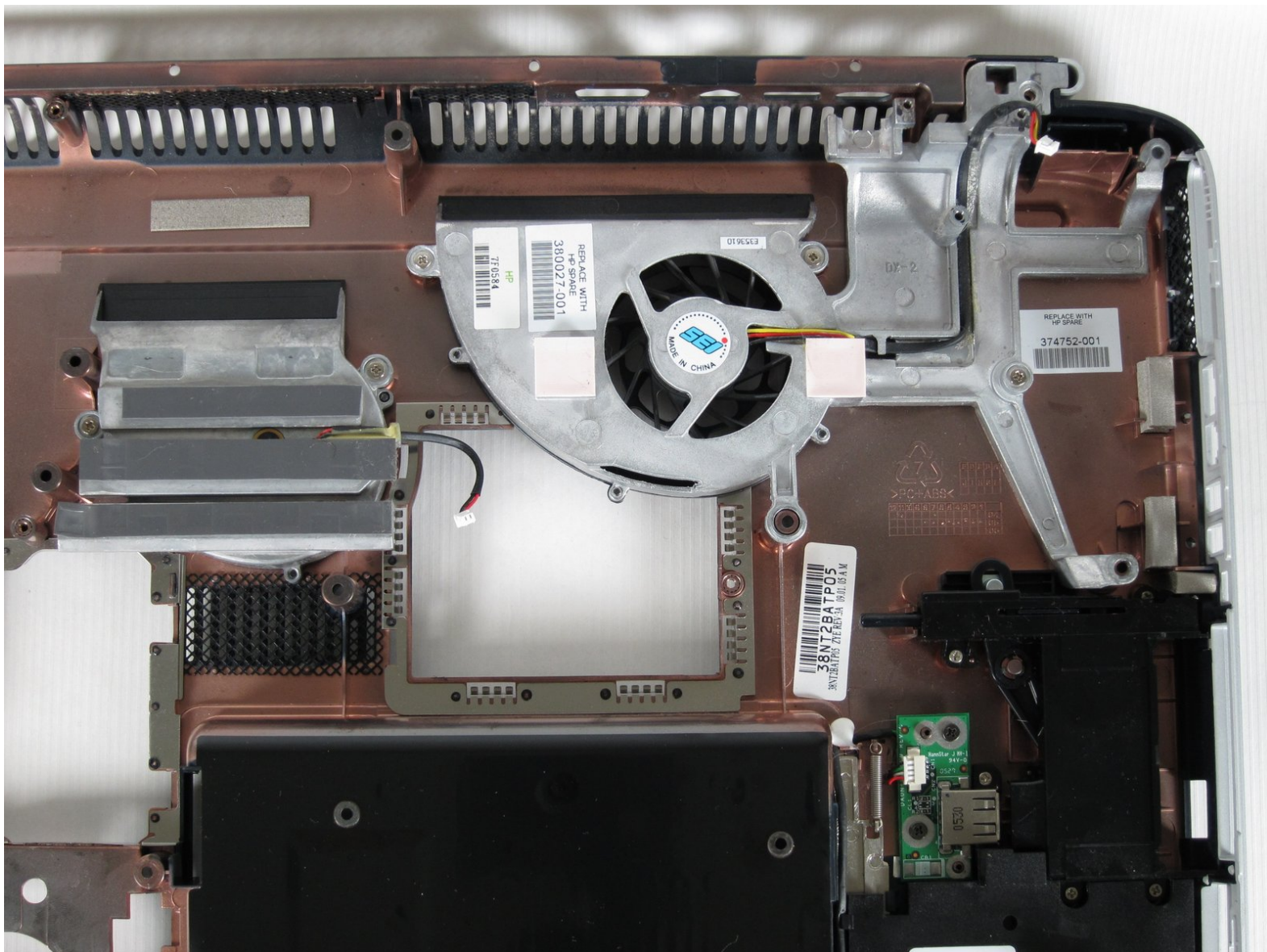




HP Pavilion zd8000 Base Fans Replacement

Written By: Allie Menard





TOOLS:

- [Paper Clip](#) (1)
- [Phillips #00 Screwdriver](#) (1)
- [Phillips #1 Screwdriver](#) (1)
- [Large Needle Nose Pliers](#) (1)
- [Spudger](#) (1)
- [Tweezers](#) (1)

Step 1 — Battery



- Slide the battery release latch towards you.

Step 2



- Pull up on the battery to remove it.

Step 3 — RAM



- Loosen the Phillips screw labeled 'ram' and lift the cover.

Step 4



- Locate the green RAM card and find the metal tabs securing the card.
- Push outwards on the two tabs to release the card.

Step 5



- Carefully slide the card out at an upward angle away from the slot.

Step 6 — WiFi Card Cables



- Unscrew the four 8mm Philips screws marked with an icon resembling a stacks of discs.
- Lift the cover from the right to remove it.

Step 7



- Use tweezers to detach the grey and black cables connected to the green WiFi card.

Step 8 — CD/Optical Drive



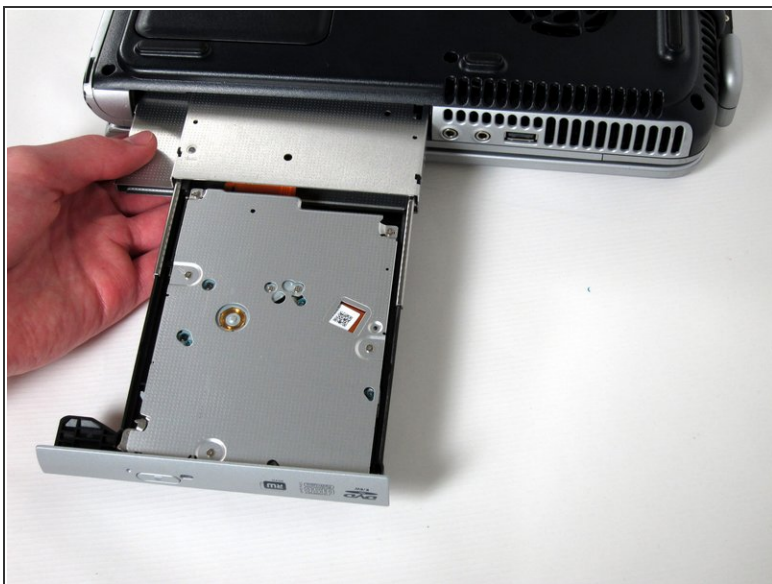
- Remove the 8mm Philips screw located between the hard drive and the WiFi card.

Step 9



- Turn the laptop 90 degrees clockwise so you are facing the CD drive.
- Unbend a paperclip and insert the end into the small hole by the eject button to cause the tray to pop out towards you.

Step 10



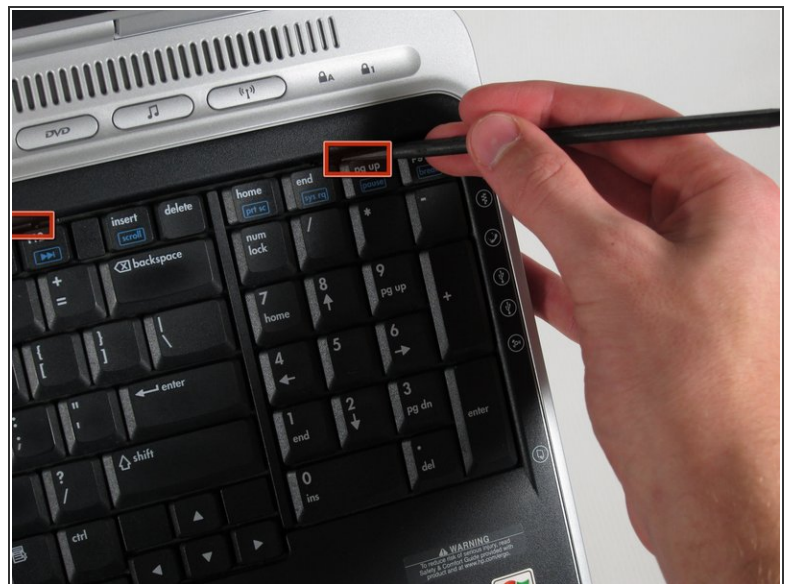
- Gently pull the tray away from the laptop and the rest of the optical drive will follow.

Step 11 — Keyboard



- Remove the two 8mm Philips screws marked “K” on the bottom of the laptop.

Step 12



- Flip the laptop over and open the screen.
- Push up on the four latches located at the top of the keyboard with the spudger to release them.

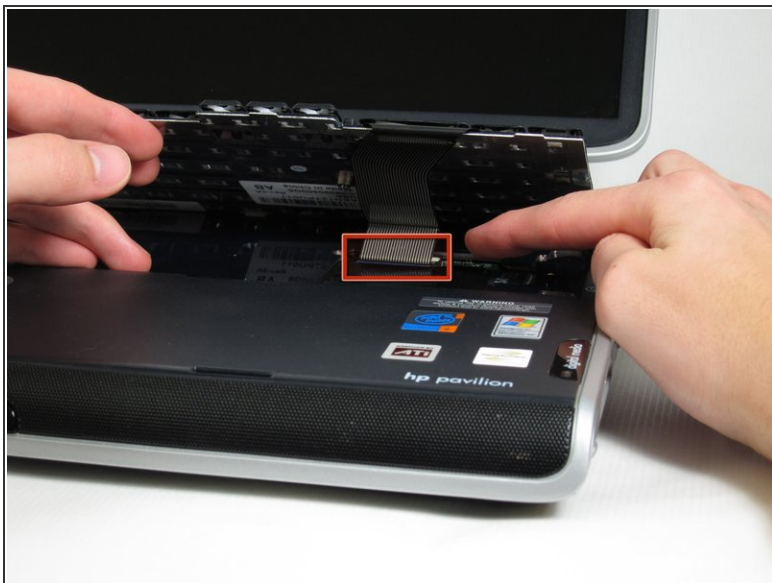
Step 13



 Lift the keyboard carefully because it is attached to the motherboard by a ribbon cable.

- Lift the top of the keyboard towards you. Then, while keeping the keyboard at an angle, lift it towards the display.

Step 14



- Rotate the keyboard so that the bottom is visible.
- With the keyboard lifted, locate the blue-striped tab on the underside of the black ribbon cable.
- Pull the tab towards you to release the keyboard from the laptop.

Step 15 — Switch Cover



- Place the laptop face-down and rotate it 180 degrees so the vents are facing you.
- Remove the five 8mm Philips screws. Three are on the black base and two are near the hinges.

Step 16




- Flip the laptop over.
- Fully open the laptop.

Step 17

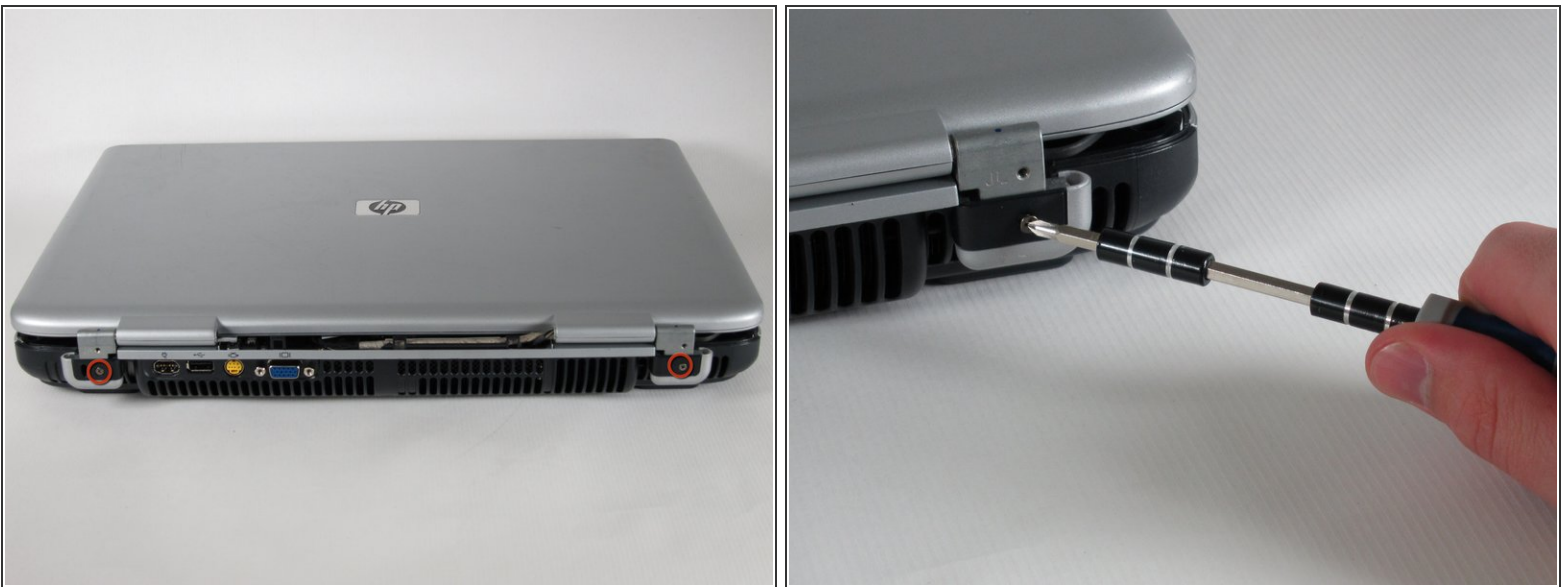


- Rotate it so the display is on your right and the keyboard is on your left.

 Lift the switch cover firmly but slowly so you do not snap it.

- Lift the switch cover carefully from one end while sliding the spudger between the switch cover and the laptop to separate them.
- The switch cover should easily separate from the laptop as you run the spudger through.

Step 18 — Screen



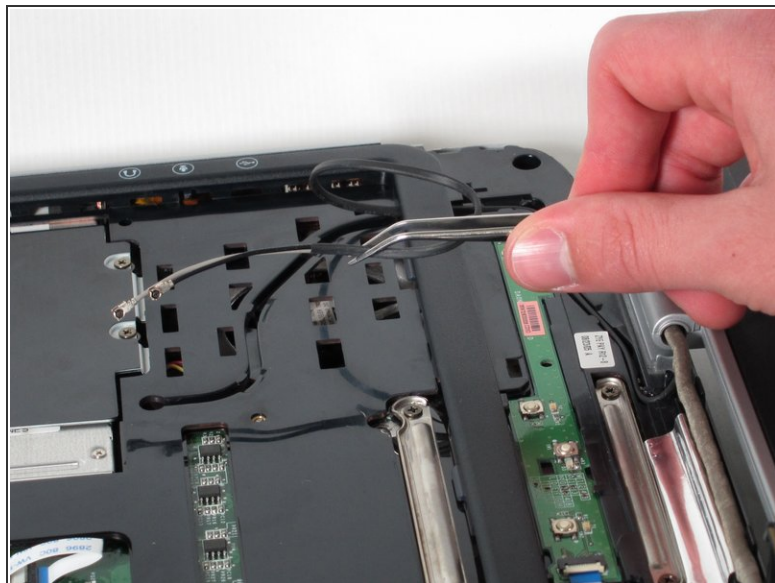
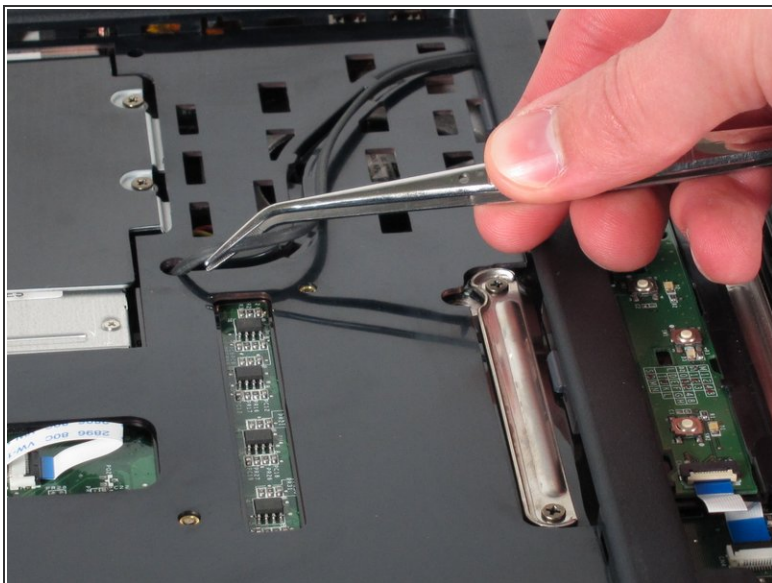
- Close the lid and rotate the laptop so that the vents are facing you.
- Unscrew the two 8mm Philips screws below the hinges.

Step 19



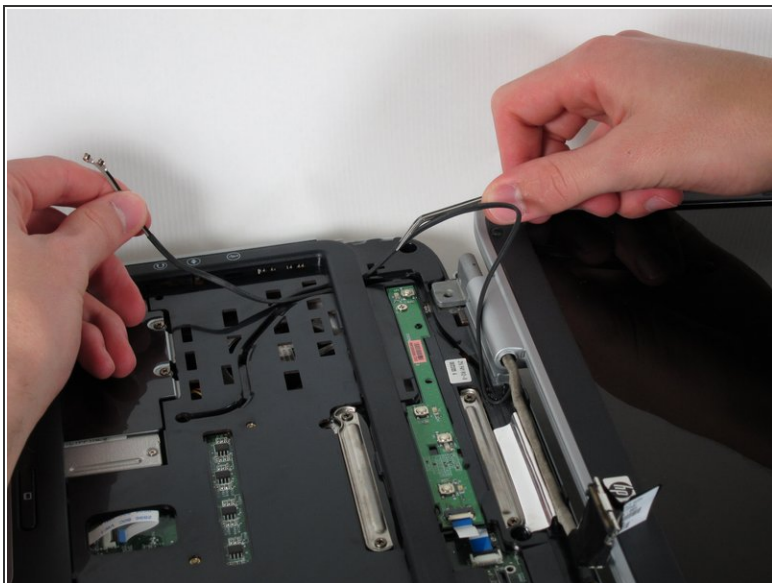
- Carefully rotate the laptop 90 degrees counter-clockwise and open the screen.
- Pull on the black tab with the HP service sticker to unplug the display from the motherboard.

Step 20



- Using tweezers, remove the black cable from the hole leading to the WiFi enclosure.
 - Pull gently to remove the black and grey cables from the case.
- i** Check the surface beneath the laptop to ensure the cables do not catch on anything when you flip the laptop over.

Step 21



- Using tweezers, pull the black cable towards the display and through the hole in the casing.

Step 22



- Unscrew the two 8mm Philips screws that attach the hinge to the laptop's display.
- Lift the screen upwards to detach it from the laptop.

Step 23 — Top Cover



- With the laptop face-down, remove the eleven 8mm Philips screws.

Step 24



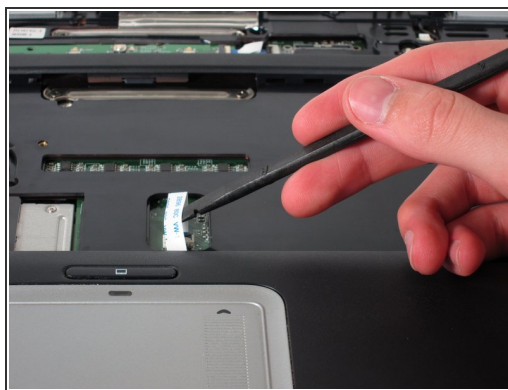
- Rotate the laptop 180 degrees so the vents are facing you.
- Unscrew the four 3mm Philips screws below the vents.

Step 25



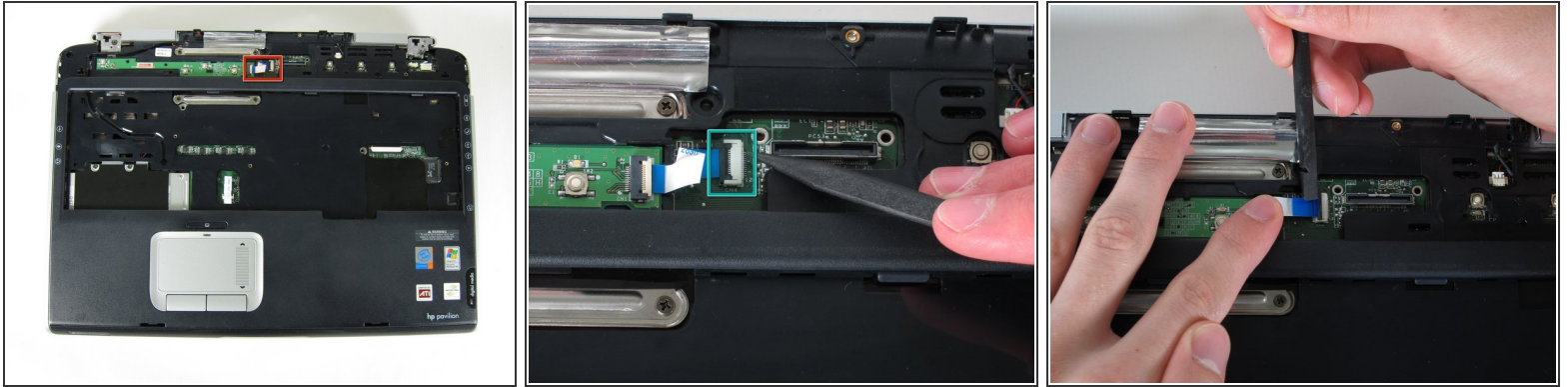
- Rotate the laptop 90 degrees counter-clockwise.
- Unscrew the two 3mm Philips screws from the optical drive bay.

Step 26



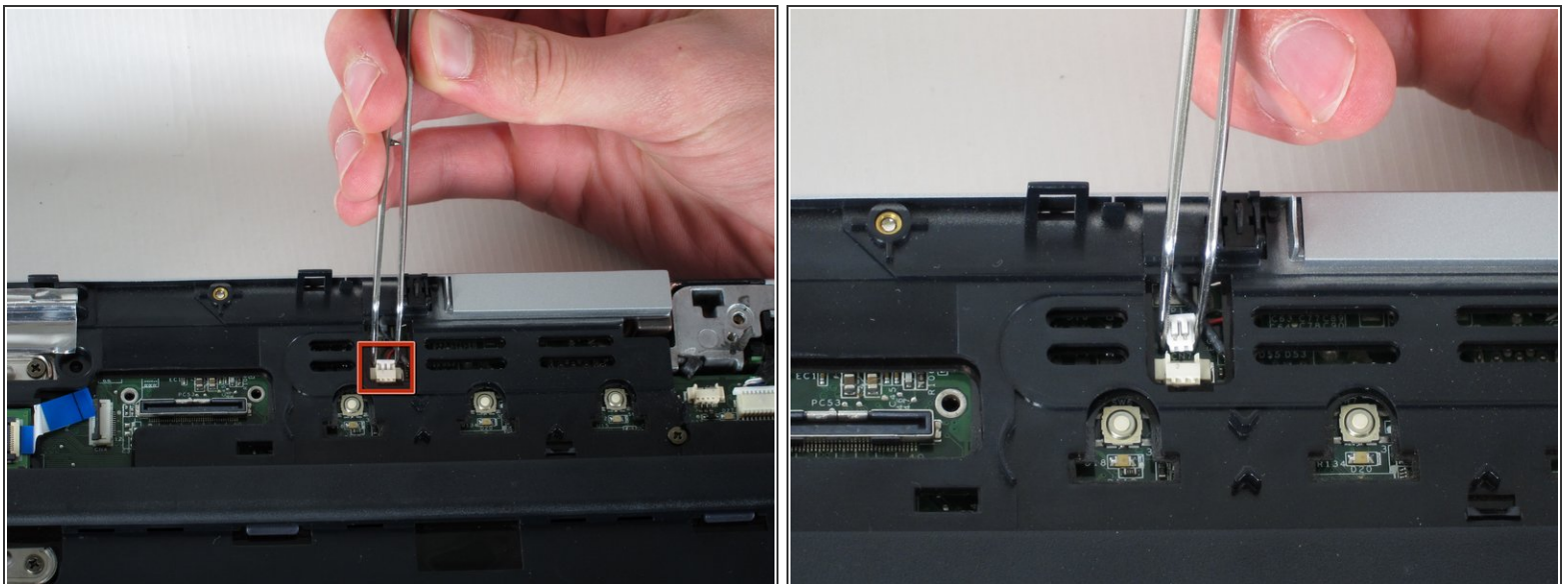
- Flip the laptop over so it is face-up with the trackpad closest to you.
- Locate the ribbon cable directly above the track pad.
- Find the black latch at the end of the ribbon cable and unlatch it with a spudger to release it.

Step 27



- Find the ribbon cable on the LED board located at the top of the laptop.
- You will notice that the ribbon cable is connected to two levels - you will be dealing with the one on the lower level.
- Find the black latch at the end of the ribbon cable and unlatch it with a spudger to release it.

Step 28



- Locate the white connector attached to a red and black cable to the right of the LED board.
- Using tweezers, pull the white connector away from you.

Step 29



- Unscrew the four 8mm Philips screws from the top cover.

Step 30



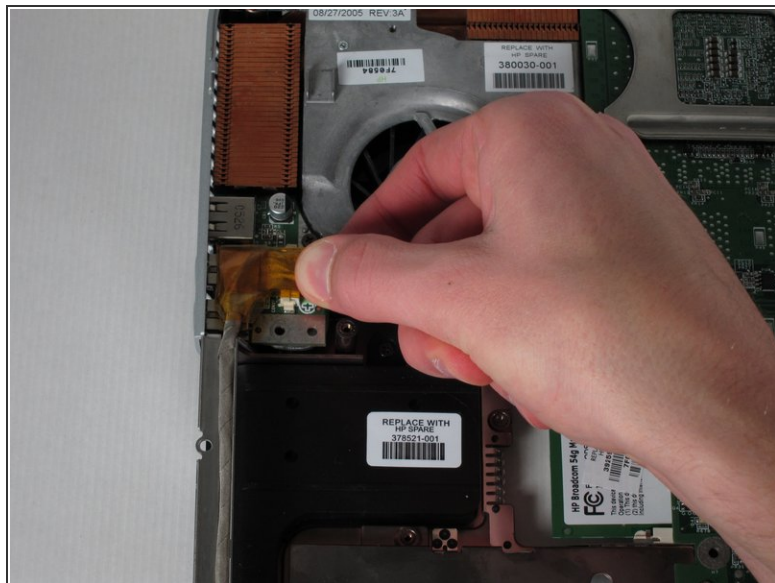
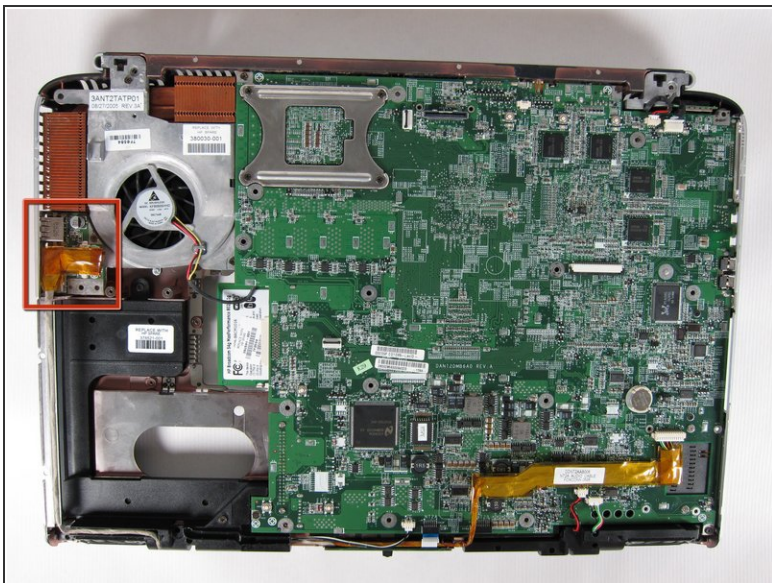
- Rotate the computer 90 degrees clockwise and insert the spudger at the seam above the card reader.
- While lifting the front end of the top cover, slide the spudger across the seam.
- When you have reached the firewire port, it should click open.

Step 31



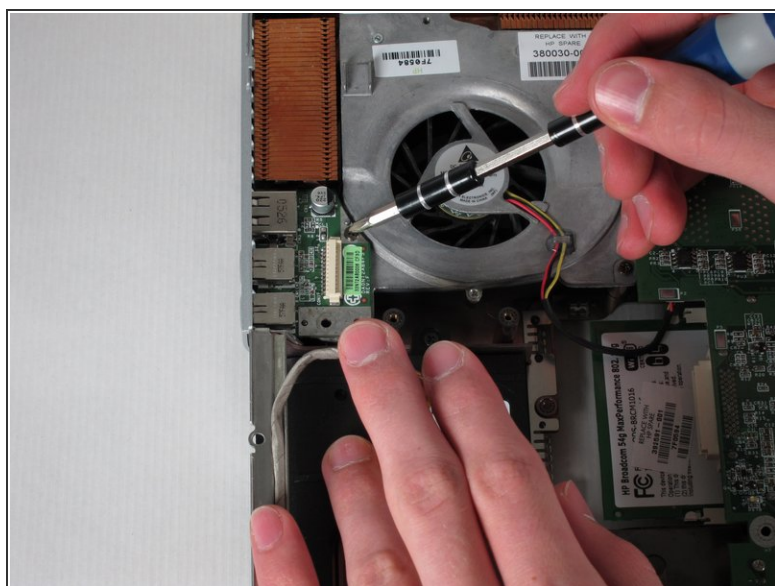
- Lift the top cover from the left side to remove it completely.

Step 32 — USB Module



- Rotate the laptop 90 degrees counter-clockwise
- Locate the USB Module
- Grip the yellow cable cover and pull it to the right to release it.

Step 33



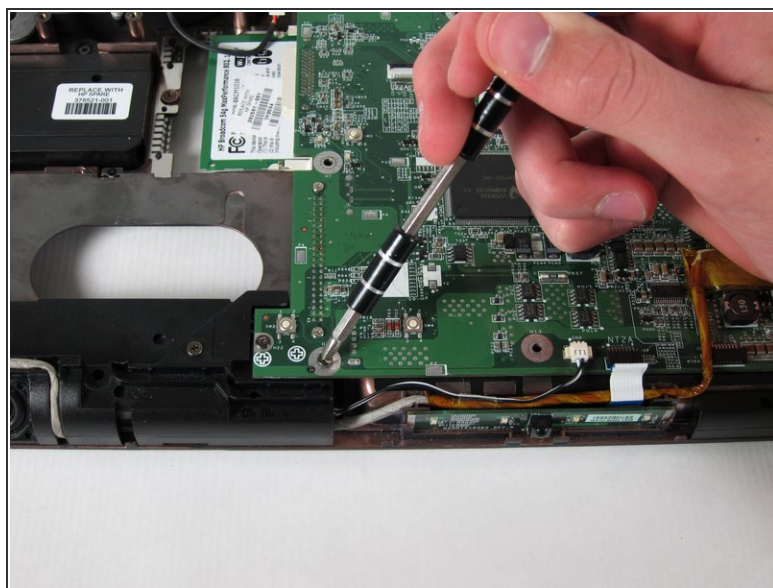
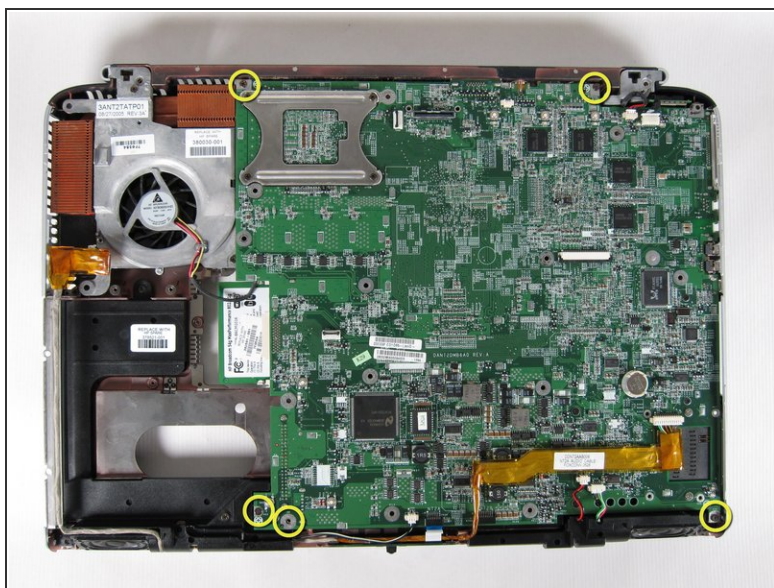
- Unscrew the 6mm Philips screw connecting the USB module to the fan.

Step 34



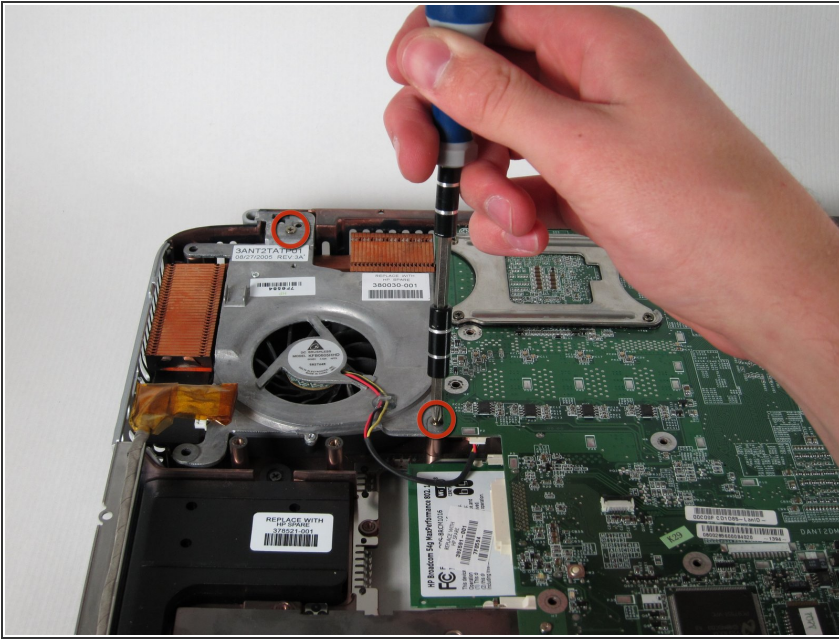
- Pull the module to the right and lift it out to release it.

Step 35 — Motherboard



- Unscrew and remove the five 4mm Philips screws marked with the white Phillips screw icon.

Step 36



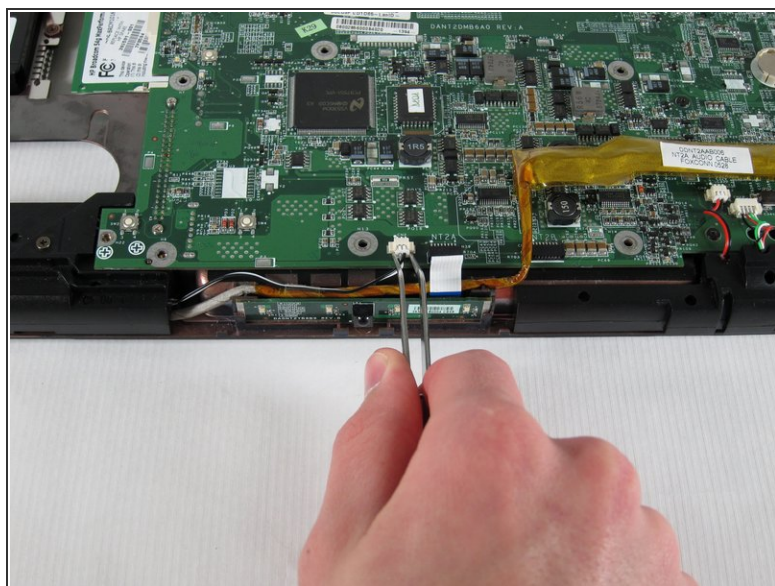
- Unscrew and remove the two 8mm Philips screws from the heat sink fan.

Step 37



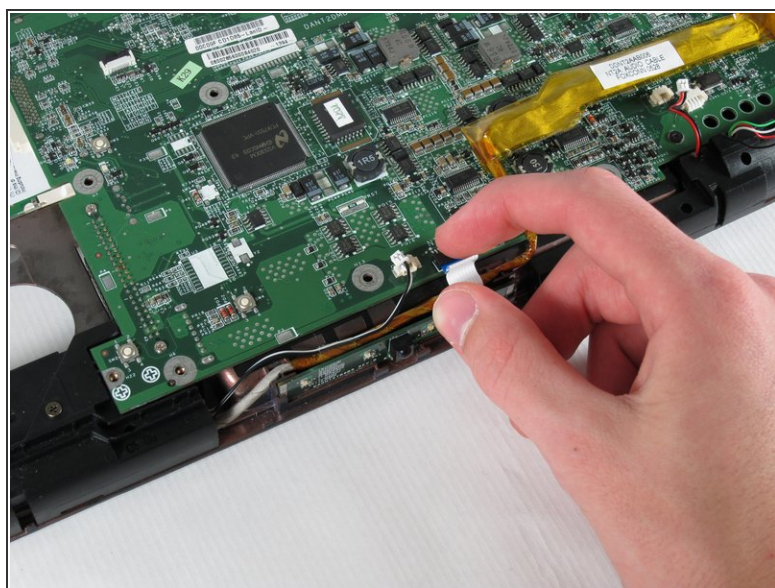
- Using tweezers, remove the digital drive board cable - the cable set on the right with black, red, green, and white wires.
- Using tweezers, remove the the righth speaker cable - the cable set on the left with red and black wires - by pulling the white connector towards you.

Step 38



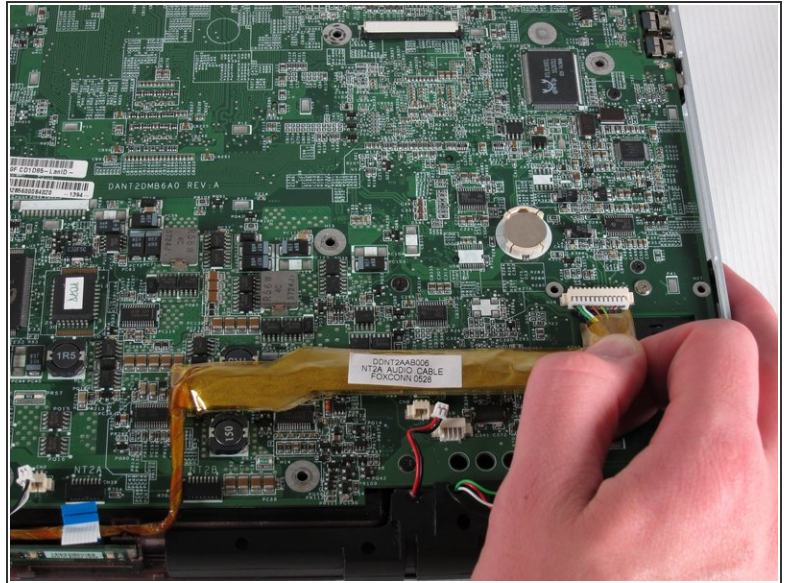
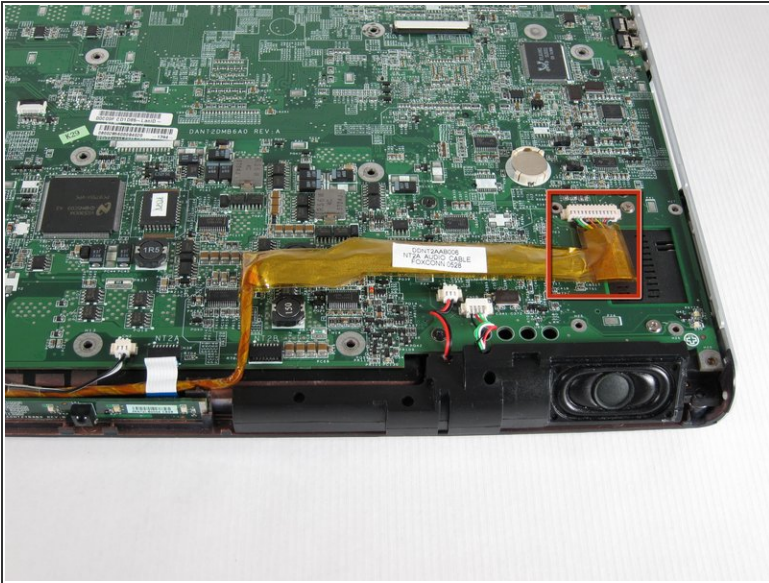
- Using tweezers, remove the left speaker cable by pulling the white connector towards you.

Step 39



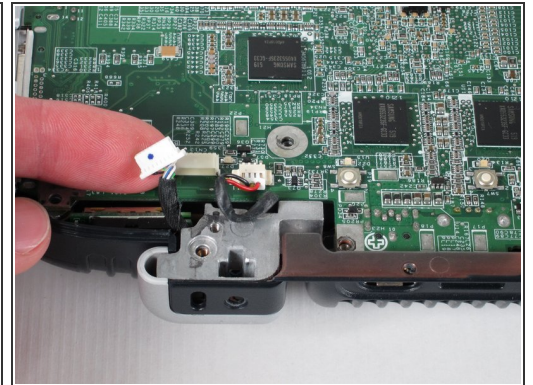
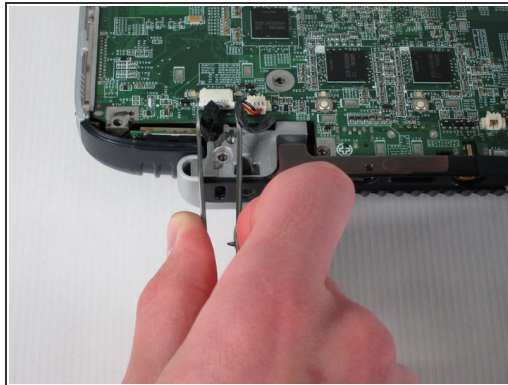
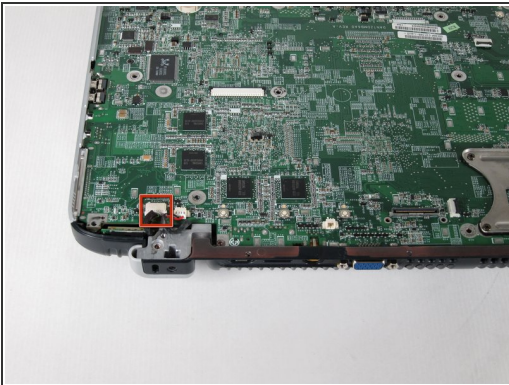
- Remove the LED board cable by pulling the white tab towards you.

Step 40



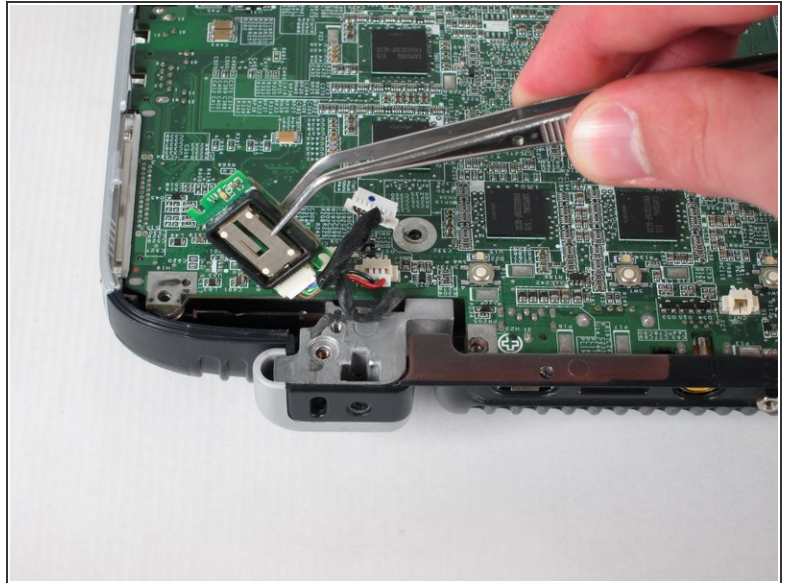
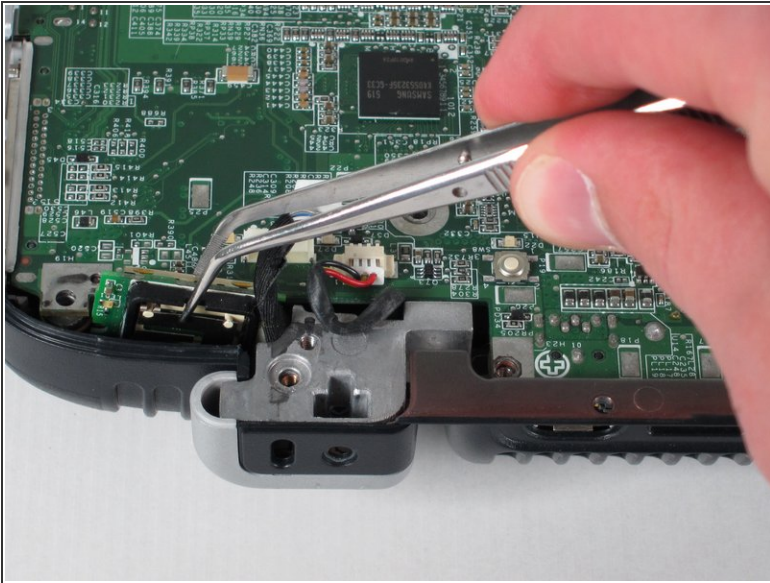
- Remove the audio cable - the one with the yellow covering located at the bottom-right corner of the motherboard - by pulling the yellow covering towards you.

Step 41



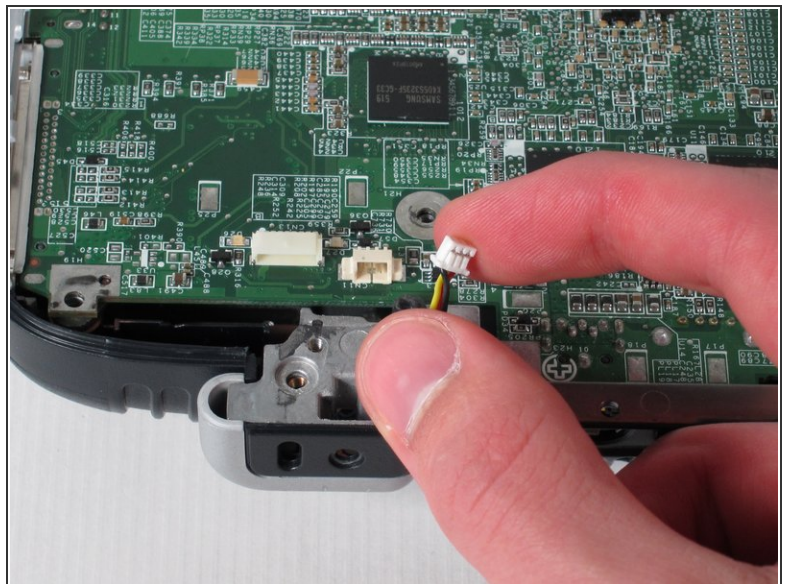
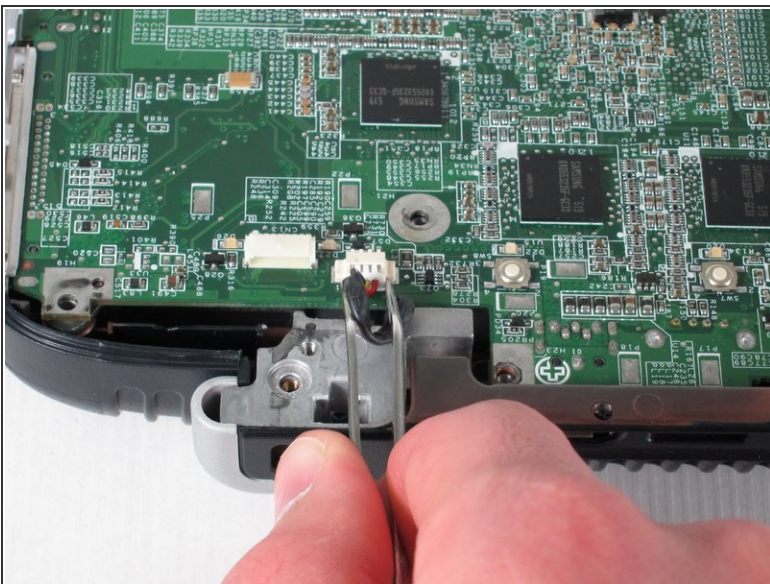
- Rotate the laptop 180 degrees and locate the Bluetooth module at the bottom-left corner of the motherboard.
- Using tweezers, remove the Bluetooth module's white connector by pulling it away from you.

Step 42



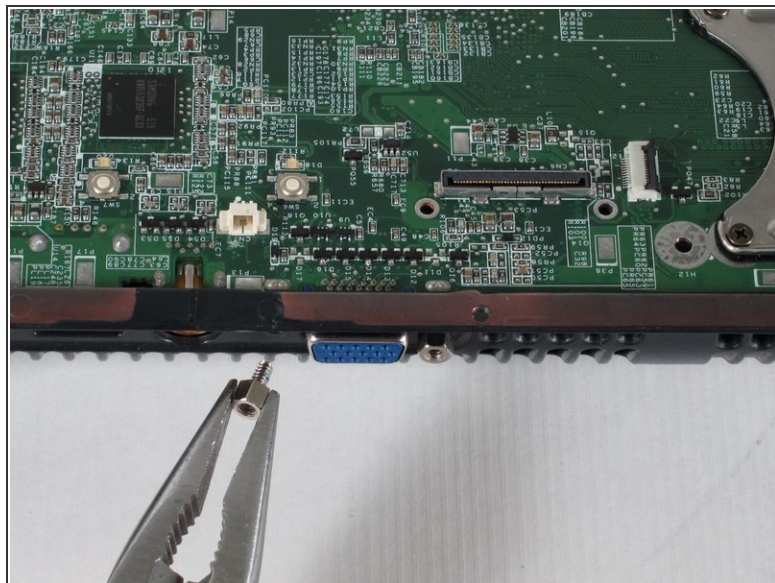
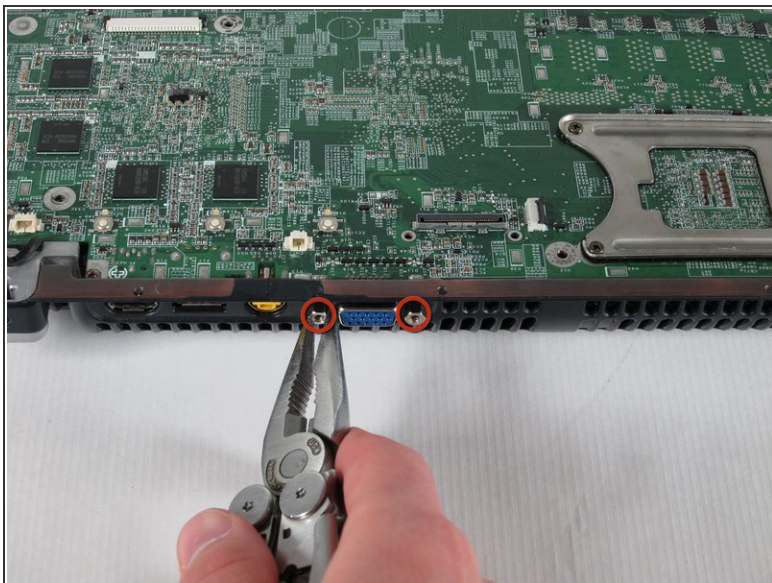
- Using tweezers, pull up on the Bluetooth module to remove it.

Step 43



- Remove the fan cable by pulling the white connector away from you.

Step 44



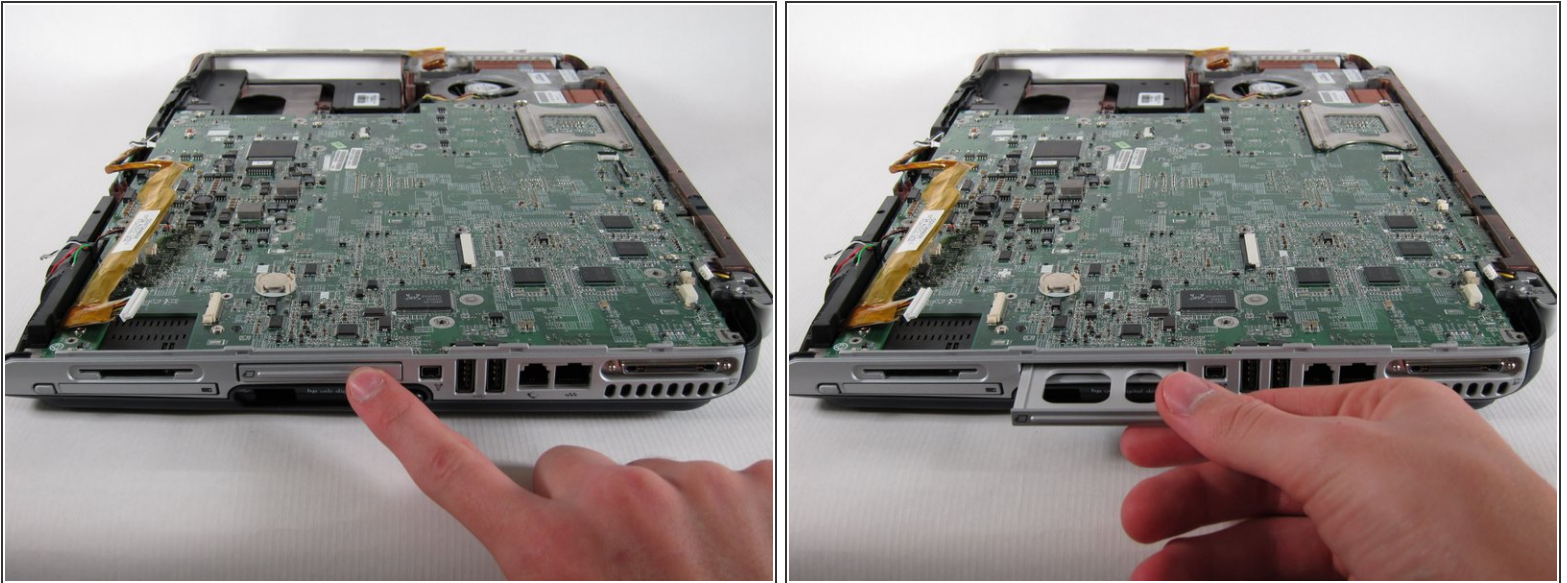
- Using pliers, unscrew and remove the two bolts from both sides of the blue VGA connector.

Step 45



- Carefully flip the laptop face-down with the battery compartment facing you.
- Using tweezers, remove the black and red cable from the RAM compartment by pulling on the white connector.

Step 46



- Flip the laptop face-up and turn it so that the drive labelled "hp usb digital drive" faces you.
- Press the ridged space saver card above the "hp usb digital drive" label to eject and remove it.

Step 47



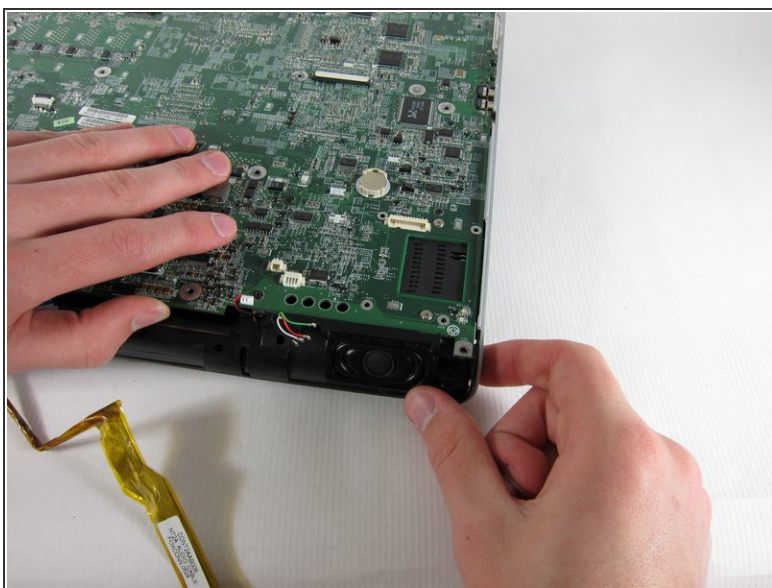
- Locate the PC card below the SD card reader.
- Push the button to its left once to eject the button itself, then press it once again to remove the PC card.

Step 48



- Once the PC card pops out, pull it out.

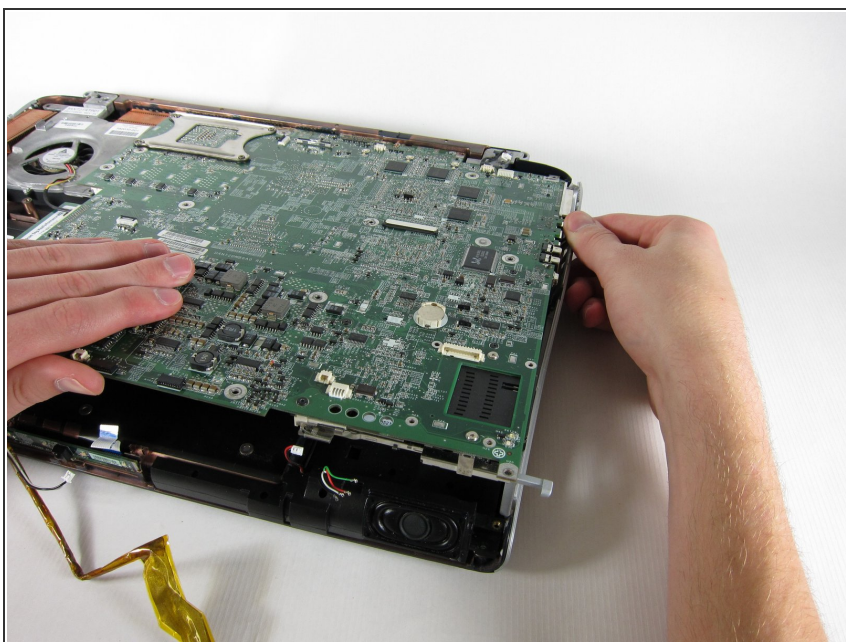
Step 49



- Turn the computer 90 degrees counter-clockwise and clear all cables off of the motherboard.
- ⓘ Push in the grey button to the left of the PC card as far as possible.
- Keeping the button pressed down, lift the motherboard up until the button pops out the top of the case.

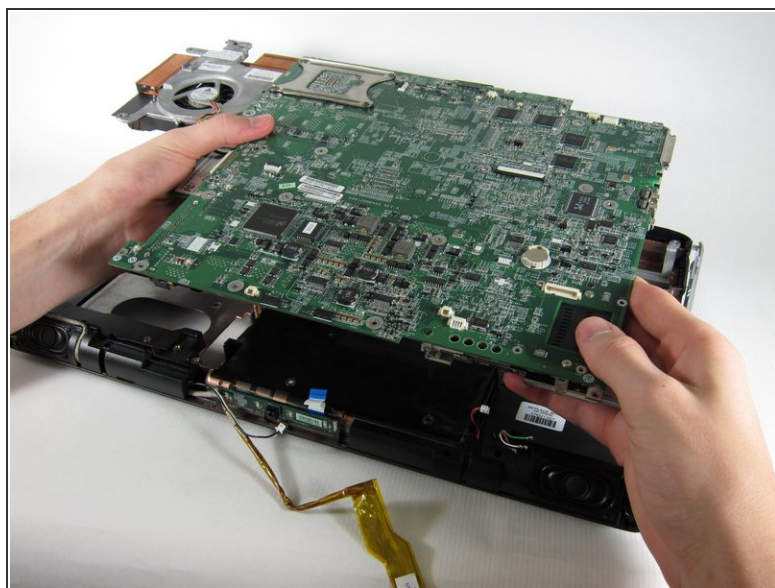
This document was generated on 2020-11-28 02:12:56 AM (MST).

Step 50



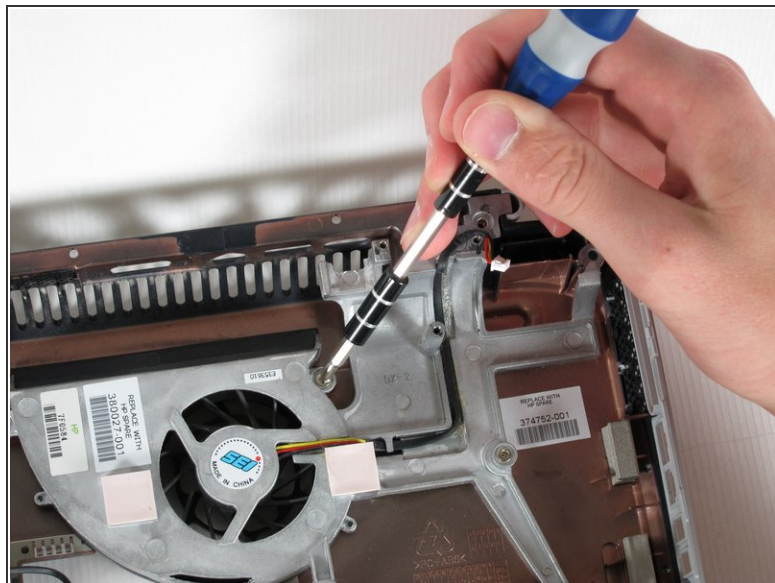
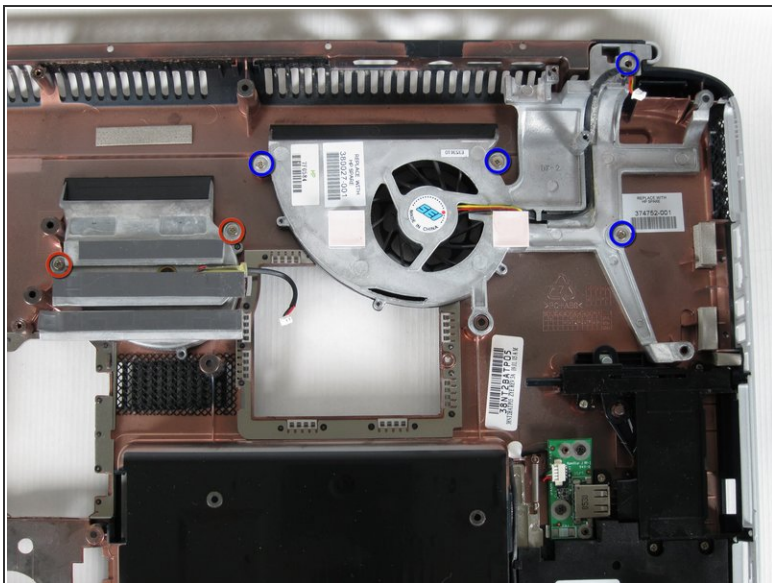
- Pull the right casing to the side to release the ports on the motherboard from it.

Step 51



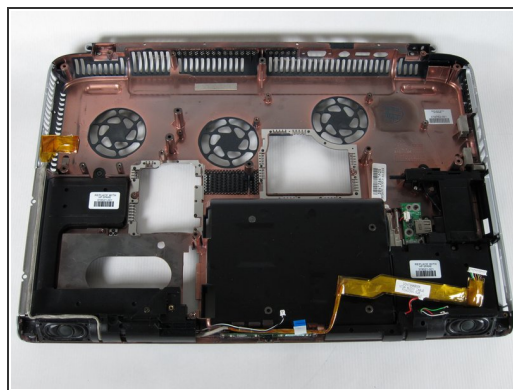
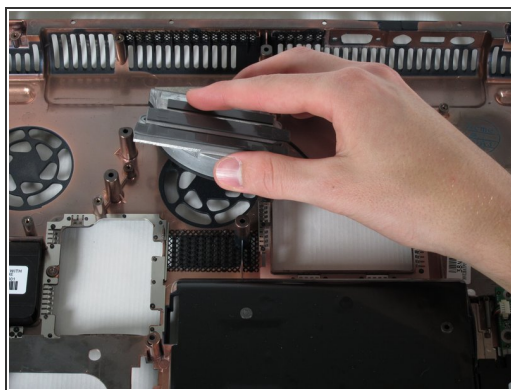
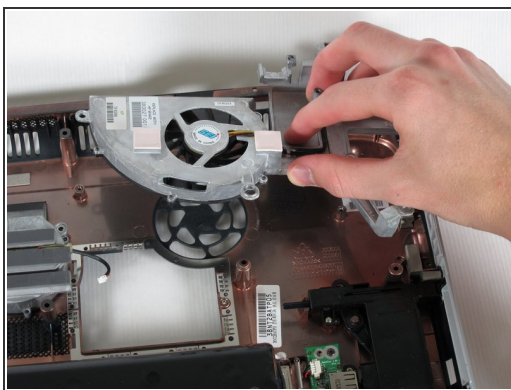
- Lift the motherboard up until it releases from the bottom casing and remove it from the laptop.

Step 52 — Base Fans



- Unscrew the two 8mm Philips screws on both sides of the middle fan and remove them.
- Unscrew the four 8mm Phillips screws from the right fan and remove them.

Step 53



- Lift both fans up and remove them from the laptop casing.

To reassemble your device, follow these instructions in reverse order.